

OFFICE FOR LEASE

ESSEX STREET MEDICAL OFFICE | 1,338 SF

211 Essex St, Hackensack, NJ 07601



PROPERTY DESCRIPTION

Discover a prime opportunity for your medical practice with this 1,338 SF medical space for lease. This modern and adaptable commercial space is thoughtfully designed to meet the needs of healthcare professionals, offering a blend of functionality and convenience. Located within a desirable property that boasts a prime location, convenient amenities, and flexible leasing options, this space provides the ideal environment to establish or expand your medical practice. Embrace the potential of this space to elevate your healthcare services and meet the needs of your patients in a modern and accommodating setting.

PROPERTY HIGHLIGHTS

- Prime location in the heart of Hackensack
- Modern and customizable office spaces
- Highly visible and easily accessible
- State-of-the-art technological infrastructure
- On-site parking for tenants and visitors

OFFERING SUMMARY

Lease Rate:	\$26.45 SF/yr + \$4 SF/yr CAM
Number of Units:	1
Available SF:	1,338 SF

DEMOGRAPHICS	0.25 MILES	0.5 MILES	1 MILE
Total Households	1,082	4,360	13,864
Total Population	2,399	9,888	32,007
Average HH Income	\$77,181	\$88,522	\$102,390

We obtained the information above from sources we believe to be reliable. However, we have not verified its accuracy and make no guarantee, warranty or representation about it. It is submitted subject to the possibility of errors, omissions, change of price, rental or other conditions, prior sale, lease or financing, or withdrawal without notice. We include projections, opinions, assumptions or estimates for example only, and they may not represent current or future performance of the property. You and your tax and legal advisors should conduct your own investigation of the property and transaction.

BRUCE ELIA JR.
Managing Director | Fort Lee
O: 201.917.5884 X701
C: 201.315.1223
operations@ergteam.com
NJ #0893523

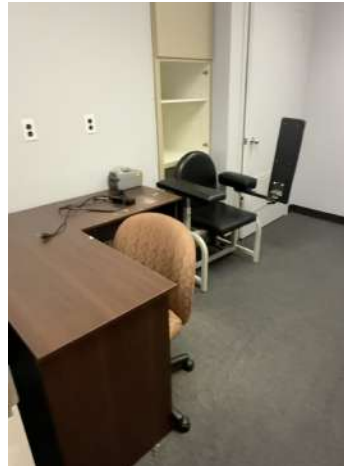
KW COMMERCIAL
2200 Fletcher Ave Suite 500
Fort Lee, NJ 07024

Each Office Independently Owned and Operated ERGTeam.kw.com

OFFICE FOR LEASE

ESSEX STREET MEDICAL OFFICE | 1,338 SF

211 Essex St, Hackensack, NJ 07601



We obtained the information above from sources we believe to be reliable. However, we have not verified its accuracy and make no guarantee, warranty or representation about it. It is submitted subject to the possibility of errors, omissions, change of price, rental or other conditions, prior sale, lease or financing, or withdrawal without notice. We include projections, opinions, assumptions or estimates for example only, and they may not represent current or future performance of the property. You and your tax and legal advisors should conduct your own investigation of the property and transaction.

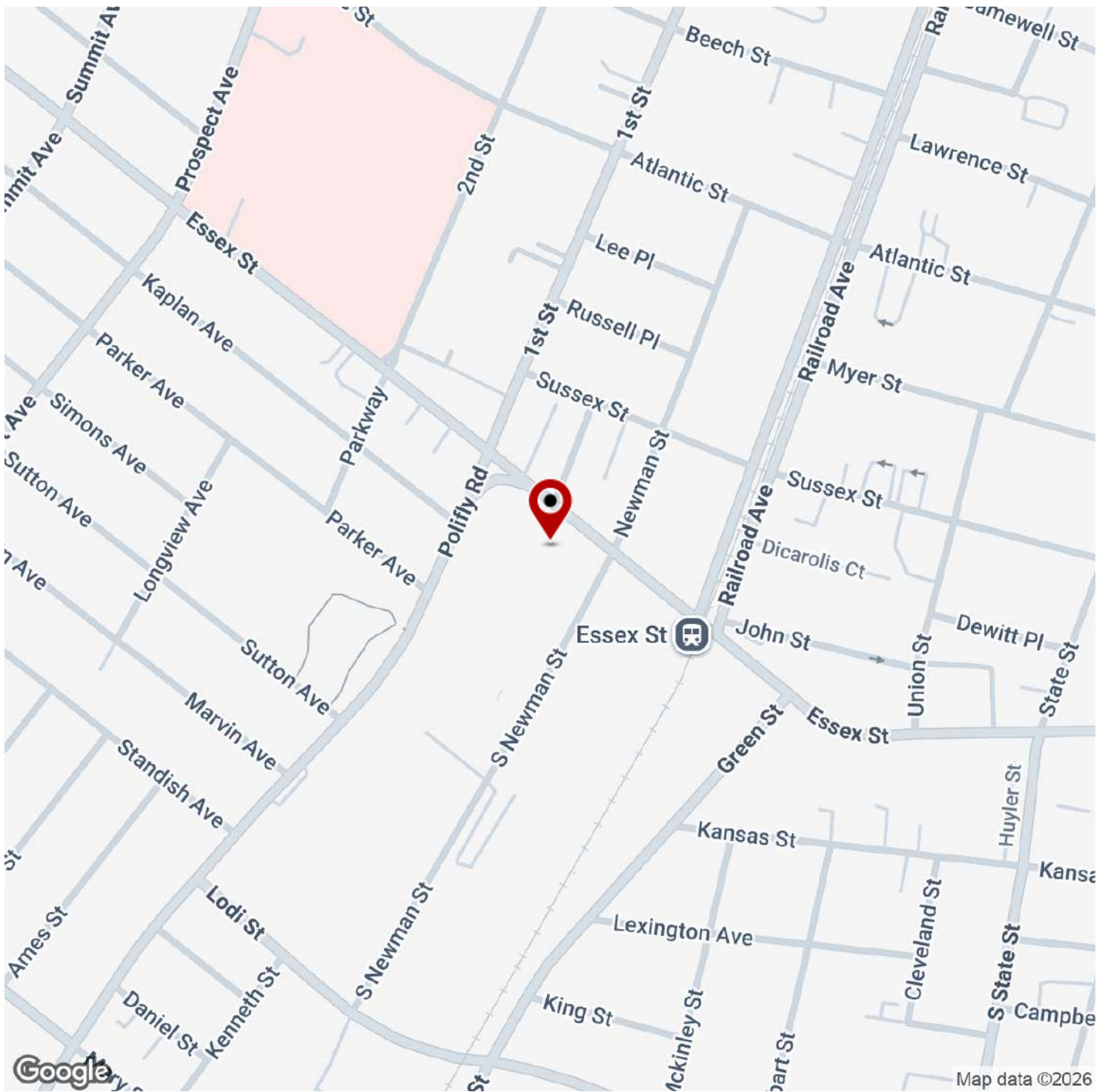
BRUCE ELIA JR.
Managing Director | Fort Lee
O: 201.917.5884 X701
C: 201.315.1223
operations@ergteam.com
NJ #0893523

KW COMMERCIAL
2200 Fletcher Ave Suite 500
Fort Lee, NJ 07024

Each Office Independently Owned and Operated ERGTeam.kw.com

ESSEX STREET MEDICAL OFFICE | 1,338 SF

211 Essex St, Hackensack, NJ 07601



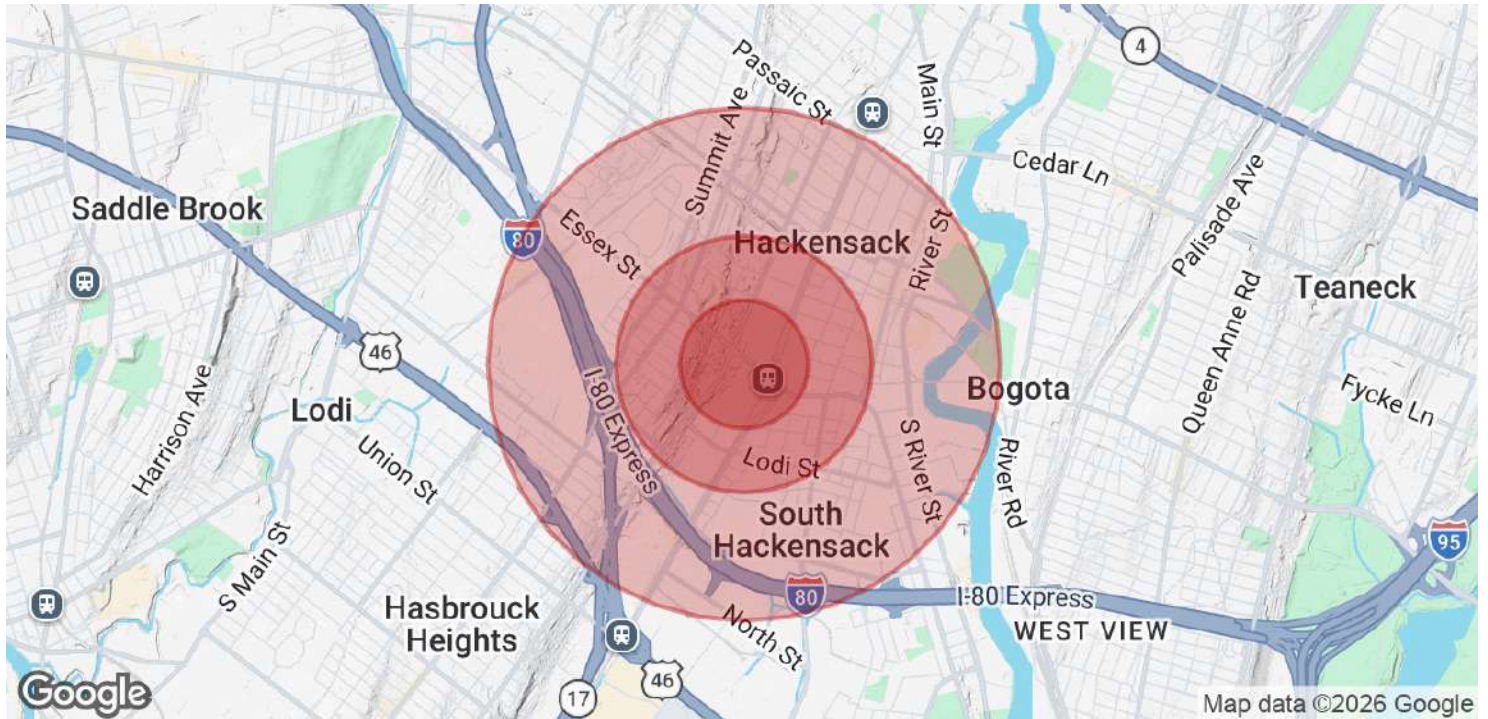
We obtained the information above from sources we believe to be reliable. However, we have not verified its accuracy and make no guarantee, warranty or representation about it. It is submitted subject to the possibility of errors, omissions, change of price, rental or other conditions, prior sale, lease or financing, or withdrawal without notice. We include projections, opinions, assumptions or estimates for example only, and they may not represent current or future performance of the property. You and your tax and legal advisors should conduct your own investigation of the property and transaction.

BRUCE ELIA JR.
Managing Director | Fort Lee
O: 201.917.5884 X701
C: 201.315.1223
operations@ergteam.com
NJ #0893523

KW COMMERCIAL
2200 Fletcher Ave Suite 500
Fort Lee, NJ 07024

ESSEX STREET MEDICAL OFFICE | 1,338 SF

211 Essex St, Hackensack, NJ 07601



POPULATION	0.25 MILES	0.5 MILES	1 MILE
Total Population	2,399	9,888	32,007
Average Age	41.3	41.2	42.3
Average Age (Male)	42.8	41.7	42.3
Average Age (Female)	38.7	39.3	41.5

HOUSEHOLDS & INCOME	0.25 MILES	0.5 MILES	1 MILE
Total Households	1,082	4,360	13,864
# of Persons per HH	2.2	2.3	2.3
Average HH Income	\$77,181	\$88,522	\$102,390
Average House Value	\$414,437	\$389,209	\$361,355

2023 American Community Survey (ACS)

We obtained the information above from sources we believe to be reliable. However, we have not verified its accuracy and make no guarantee, warranty or representation about it. It is submitted subject to the possibility of errors, omissions, change of price, rental or other conditions, prior sale, lease or financing, or withdrawal without notice. We include projections, opinions, assumptions or estimates for example only, and they may not represent current or future performance of the property. You and your tax and legal advisors should conduct your own investigation of the property and transaction.

BRUCE ELIA JR.
 Managing Director | Fort Lee
 O: 201.917.5884 X701
 C: 201.315.1223
 operations@ergteam.com
 NJ #0893523

KW COMMERCIAL
 2200 Fletcher Ave Suite 500
 Fort Lee, NJ 07024

OFFICE FOR LEASE

ESSEX STREET MEDICAL OFFICE | 1,338 SF

211 Essex St, Hackensack, NJ 07601



BRUCE ELIA JR.

Managing Director | Fort Lee

operations@ergteam.com

Direct: **201.917.5884 x701** | Cell: **201.315.1223**

NJ #0893523

PROFESSIONAL BACKGROUND

Bruce Elia, Jr. has been a full-time Commercial & Residential RE Broker for the past 14 years, after having vary varied earlier careers. Bruce was hired on Wall Street after college, earning his Series 7, Series 63 and worked for PHD Capital, whose founders and operating principles were Nelson Braff and Jodi Eisenberg. After a little over a year there, Bruce chose not to continue with the Series 24 licensing for stock broker trading. Bruce decided to get his real estate license and started full-time as a wholesale investor and Realtor® in 2009 and is now a founding partner, with Al Donohue of Keller Williams City Views in Fort Lee. His advanced real estate training, designations, and track record of success is proven in the commercial real estate world. His contact database of principals and of colleagues is what a seller or buyer needs representing them in today's New Jersey Real Estate Market. Bruce takes great pride in the relationships he builds and works relentlessly on the client's behalf to accomplish their real estate goals. Bruce and his team of over 355+ real estate experts (broker & agent-associates) selling over \$500,000,000 annually in sales, representing the best and brightest in the industry, and always striving to lead the field in research, innovation, and consumer education through technologically advanced business models and CRM systems.

EDUCATION

Sales-Associate License - April 2008'

Bachelor Degree - University of New Hampshire - June 2008'

Broker-Associate License - May 2011'

Certified Negotiation Expert (C.N.E.)

Financial Analysis for Commercial Real Estate (C.C.I.M)

Feasibility Analysis for Commercial Real Estate (C.C.I.M)

Financial Modeling for Real Estate Development (C.C.I.M)

RE Development: Acquisitions (C.C.I.M)

Industrial Designation - Financial Analysis (C.C.I.M)

Multi-family Feasibility and Analysis (C.C.I.M)

MEMBERSHIPS

KW Commercial | Bruce Elia Jr. | Fort Lee

2200 Fletcher Ave Suite 500

Fort Lee, NJ 07024

We obtained the information above from sources we believe to be reliable. However, we have not verified its accuracy and make no guarantee, warranty or representation about it. It is submitted subject to the possibility of errors, omissions, change of price, rental or other conditions, prior sale, lease or financing, or withdrawal without notice. We include projections, opinions, assumptions or estimates for example only, and they may not represent current or future performance of the property. You and your tax and legal advisors should conduct your own investigation of the property and transaction.

BRUCE ELIA JR.

Managing Director | Fort Lee

O: 201.917.5884 X701

C: 201.315.1223

operations@ergteam.com

NJ #0893523

KW COMMERCIAL
2200 Fletcher Ave Suite 500
Fort Lee, NJ 07024

Each Office Independently Owned and Operated **ERGTeam.kw.com**