

# 60 CUTTERMILL RD



## CONTEMPORARY OFFICE SPACE AVAILABLE FOR SUBLEASE

Nestled in a prime location, presents an exemplary embodiment of sophisticated office environments. This distinguished, recently built office edifice, renowned for its architectural elegance, offers unparalleled amenities and strategic advantages for discerning professionals. The Tenant currently occupying Suite 600 (±9,120 SF) is open to subdividing the space to accommodate qualified tenants.

**Elegant Modernity:** Discover the unparalleled offerings of our recently renovated building, boasting a modern lobby illuminated with LED lighting and state-of-the-art bathrooms. Embrace the outdoors with our newest addition—an inviting outdoor lounge, ideal for meetings or relaxation breaks.

**Convenient Accessibility:** Situated in close proximity to the Long Island Rail Road (LIRR) station, just a quick 20-minute commute to Manhattan, our location offers unmatched accessibility. Surrounded by numerous dining options, cafes, banks, and accessible public transportation, commuting is convenient. Ample parking, available on both ground and subterranean levels within our parking garage, further streamlines the experience for tenants and visitors alike.



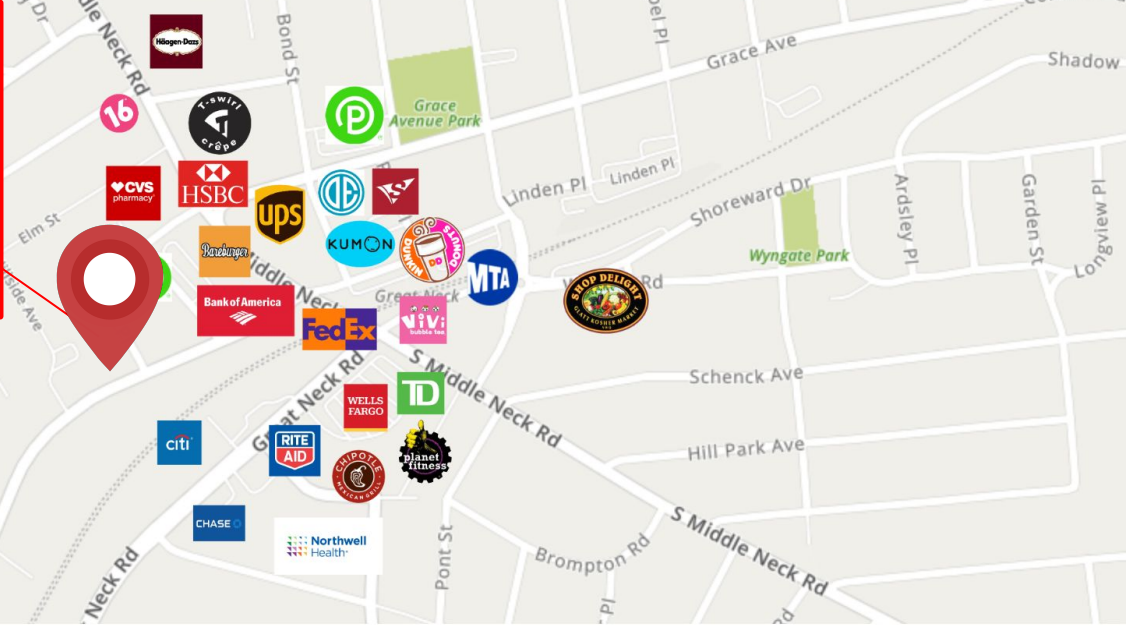
**ROZITA SOOMEKH**

Licensed Real Estate Broker

[Rozita.Soomekh@elliman.com](mailto:Rozita.Soomekh@elliman.com)

**516.205.2279**





OTHER NOTABLE BUSINESSES IN THE AREA



# AVAILABLE UNITS

Suite #600

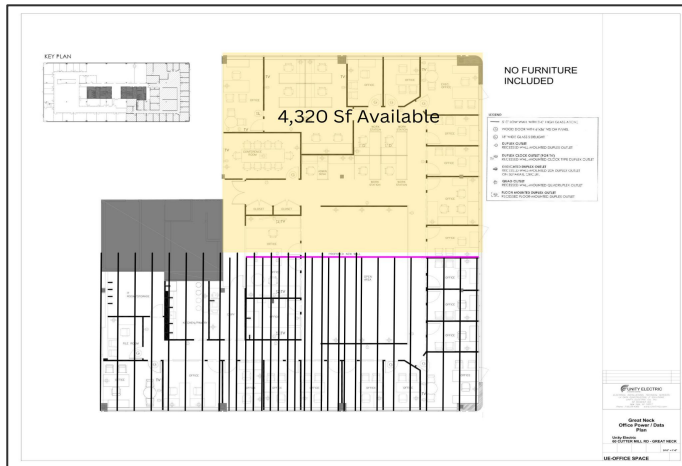
APPROX. 4,320 SF

**\$14,040/M**

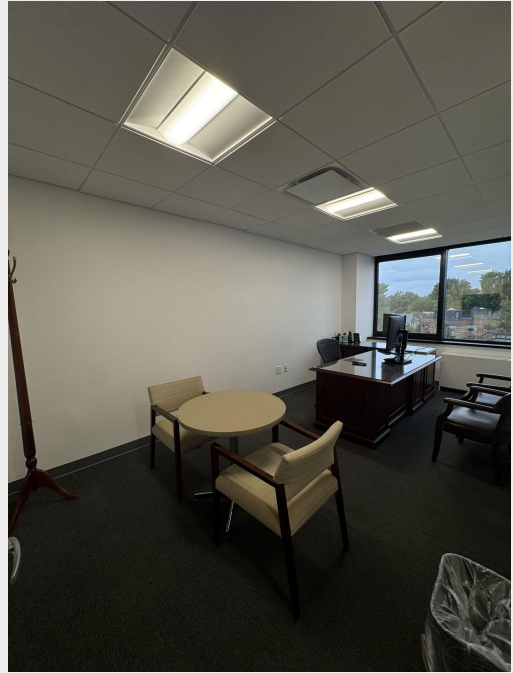
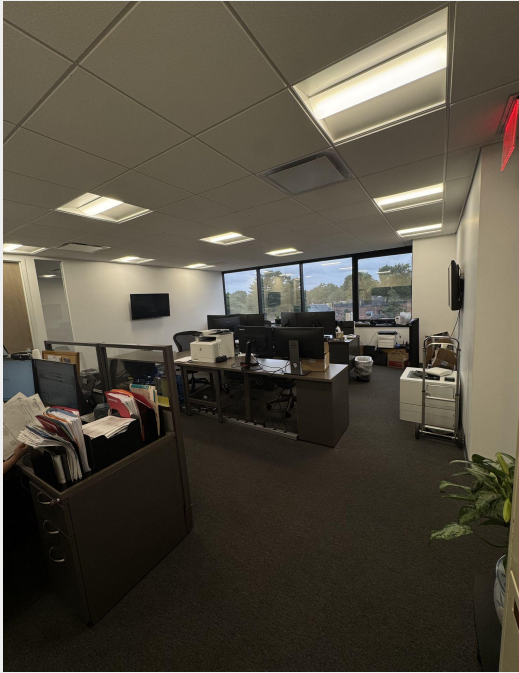
Utilities not included

**Reception Area**

Conference room, waiting room area, Multiple offices, Open area (12-14 cubicles), Storage space

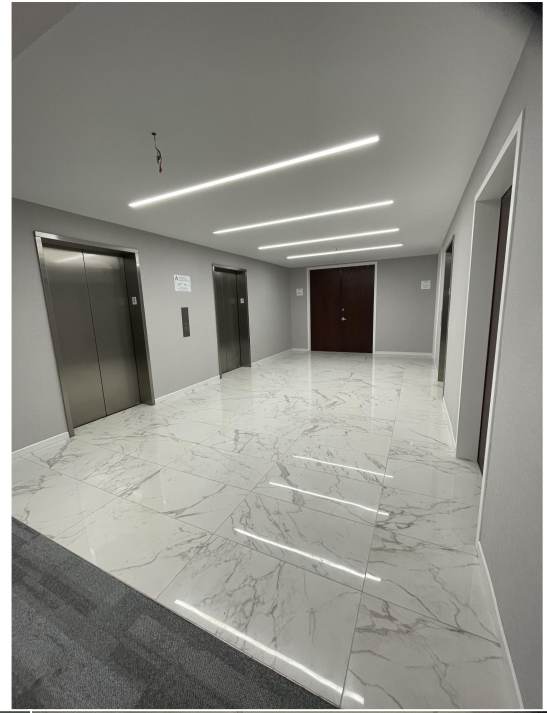
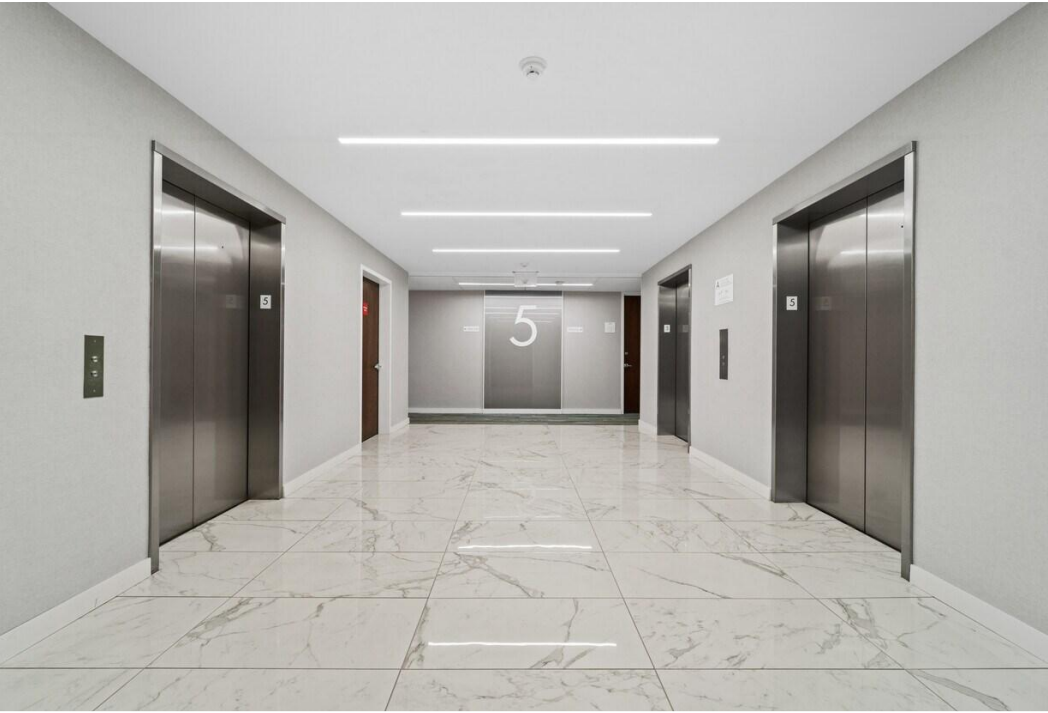








# RECENTLY RENOVATED COMMON CORRIDORS AND LAVATORIES



 Douglas Elliman

  
THE ROZITA SOOMEKH TEAM  
at Douglas Elliman Real Estate

**ROZITA SOOMEKH**

Licensed Real Estate Broker

[Rozita.Soomekh@elliman.com](mailto:Rozita.Soomekh@elliman.com)

**516.205.2279**





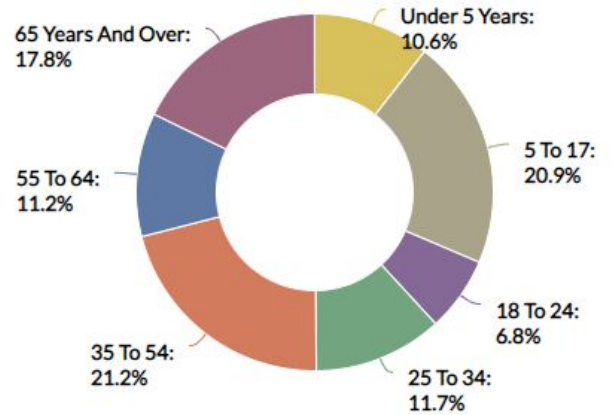
# GREAT NECK

NEW YORK



Great Neck is a region on Long Island, New York, that covers a peninsula on the North Shore and includes 9 villages, such as the villages of Great Neck, Great Neck Estates, Great Neck Plaza, Kings Point, and Russell Gardens, and a number of unincorporated areas, as well as an area south of the peninsula near Lake Success and the border territory of Queens.

## Age Demographic



TOTAL POPULATION

±11,000

## MEDIAN HOUSEHOLD INCOME



SCAN TO VIEW  
ALL OUR LISTINGS

