

# 925 & 975

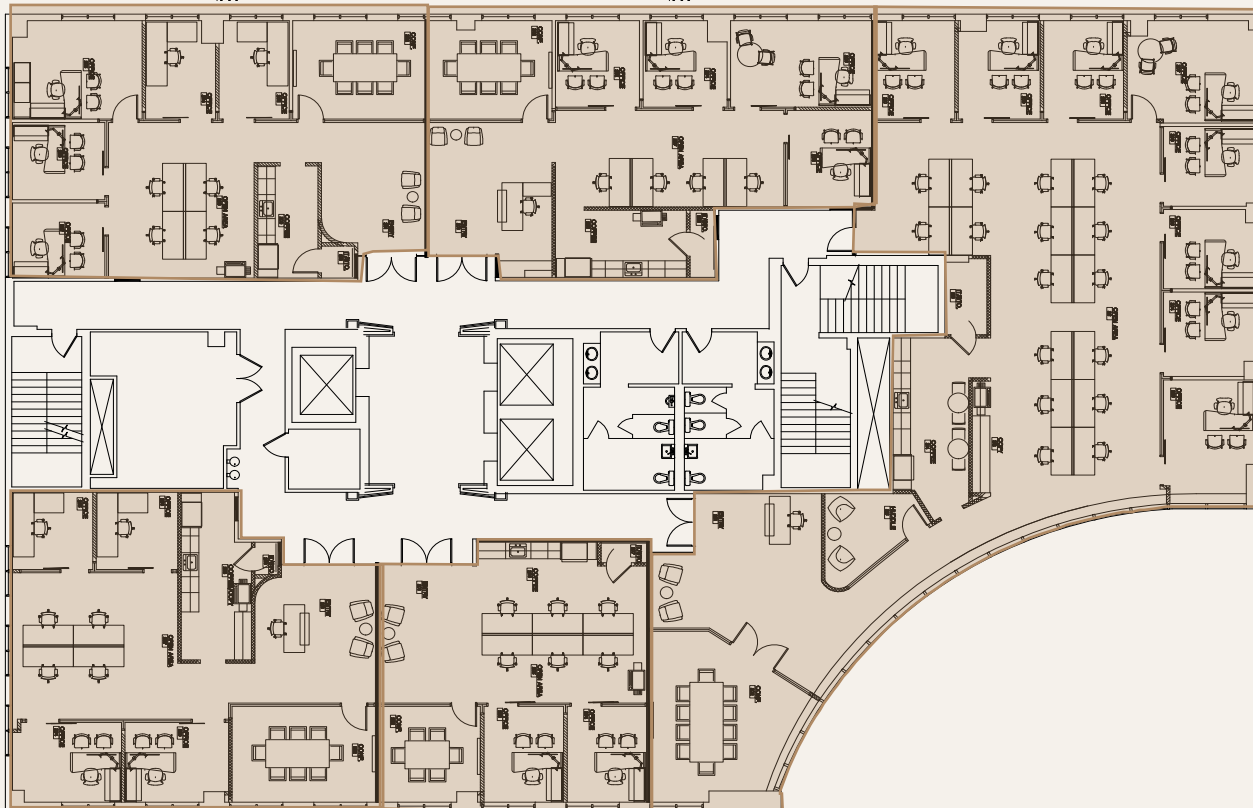
SOUTH FEDERAL HWY  
BOCA RATON, FL

## 2nd FLOOR - SPEC SUITES

SUITE 240: 2,031 SF

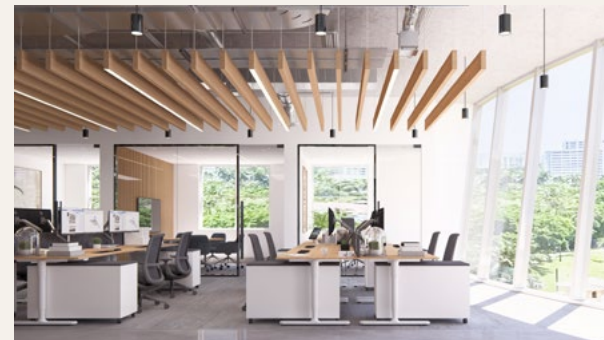
SUITE 230: 1,970 SF

SUITE 220: 4,790SF



SUITE 200: 2,017 SF

SUITE 210: 1,337 SF



For more information contact:

**John Criddle**  
Executive Vice President  
+1 561 283 5176  
john.criddle@cbre.com

**Joe Freitas**  
Senior Vice President  
+1 561 512 8844  
joe.freitas@cbre.com

**Maxwell Pawk**  
First Vice President  
+1 561 393 1670  
max.pawk@cbre.com

**Nicholas Mulligan**  
Associate  
+1 561 393 1680  
nicholas.mulligan@cbre.com

 TRIANGLE CAPITAL GROUP

**IPCapital**  
PARTNERS, LLC

**CBRE**