



CONCOURSE

T Y S O N S

1593 | 1595 SPRING HILL ROAD, TYSONS VA



WELCOME TO CONCOURSE TYSONS



Natural and man-made beauty provides the backdrop for Concourse, an iconic office project comprised of two 7-story buildings nestled amongst the quiet trees of Raglan Road Park in Tysons, Virginia and Only steps to the Spring Hill Metro. Acres of adjacent county parkland, preserved in perpetuity, provide miles of wooded trails and gardens enhanced by the campus' outdoor patios and easy walkable access to the bustling amenities of Tysons West. The tree-lined ceremonial driveway provides a dramatic introduction to the iconic buildings' light filled, three-story glass atrium which joins the twin towers, together totaling 347,684 square feet. With strong ownership support of Atlantic Realty Company and Angelo Gordon, Concourse has recently undergone a comprehensive renovation that has transformed and modernized the project facade, lobby atrium, common areas, restrooms, backyard and auditorium. Further enhancements include a fitness center expansion, a new and tasty on-site café, and a cozy tenant lounge.



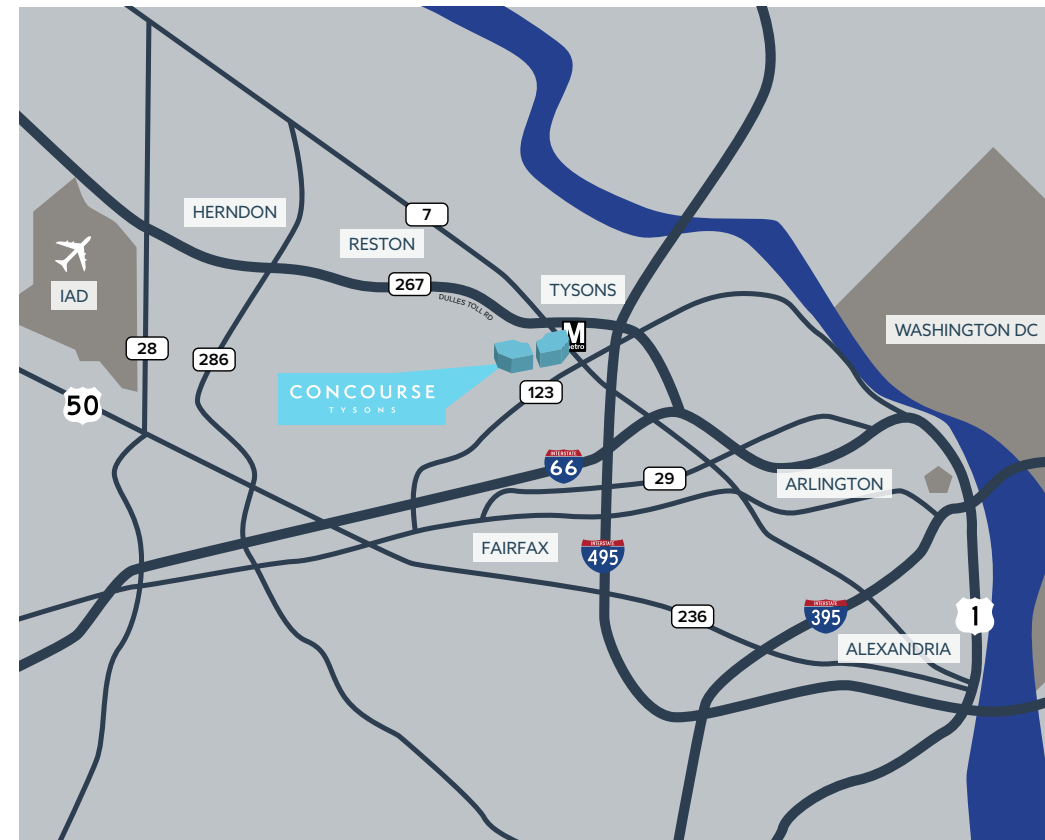
LOCATION & ACCESS



**4-MINUTE WALK TO
SPRING HILL
METRO STATION**

TIME TO

- ▶ **IAD:** 17 minutes
- ▶ **Arlington:** 15 minutes
- ▶ **Washington DC:** 25 minutes
- ▶ **DCA:** 25 minutes
- ▶ **National Landing:** 25 minutes



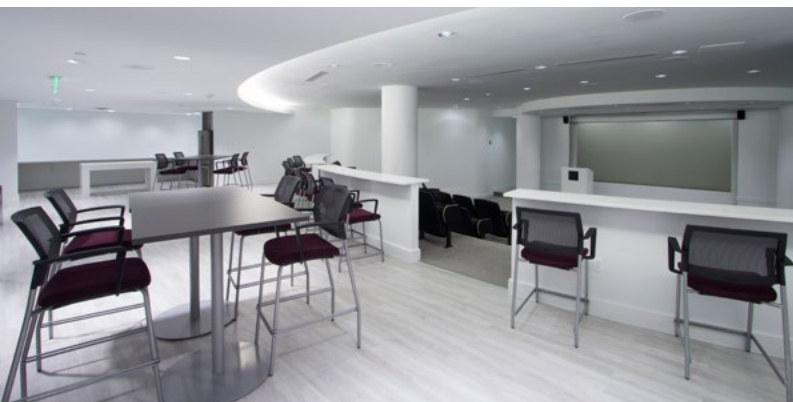


131-SEAT, THEATRE-STYLE AUDITORIUM



 VIRTUAL TOUR

CAFÉ WITH OUTDOOR PATIO



FULLY EQUIPPED FITNESS CENTER



 VIRTUAL TOUR

OUTDOOR SPACE



PREMIUM ON-SITE AMENITIES

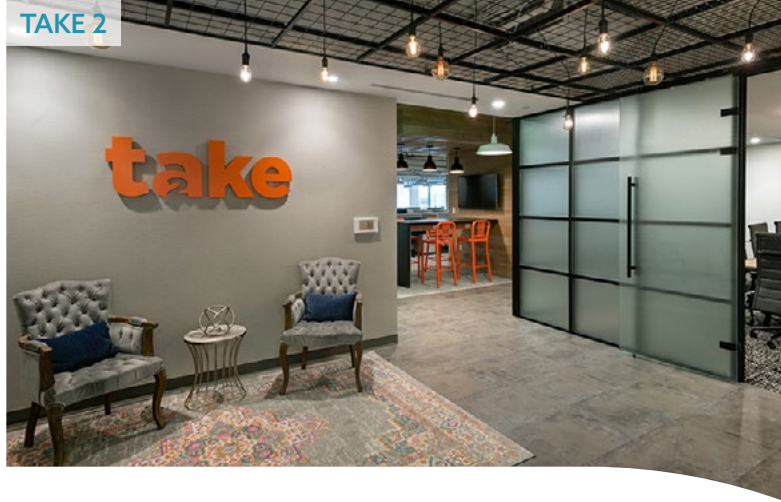
The property features a host of on-site amenities exclusive for tenants. Amenities include:

- ▶ State of the art 131-seat, theatre-style auditorium
- ▶ Café with outdoor patio shaded by a large tree grove
- ▶ Full-size outdoor basketball and pickleball courts
- ▶ Outdoor lawn with bocce ball court and observation bar
- ▶ Fitness center equipped with showers and locker rooms
- ▶ Tenant lounge with comfortable seating

TENANT LOUNGE



TAKE 2



BE INSPIRED BY OUR TENANTS

Explore what your office space can be at Concourse Tysons with a special look at Take 2 and CapTech's space

RENOVATED COMMON AREAS



CAPTech



EXPLORE YOUR NEIGHBORHOOD



The transformation of Tysons into a live-work-play community has been accelerated by significant investments from major valuable retailers. Most notable is the newly delivered Walmart Super Center and 24 Hour Fitness Club at Tysons West – a half mile from Concourse’s door. Additional restaurant amenities at Tysons West include: District Taco, Moby Dick, Perfect Pita, and Bombay Tandoor. Future development within Tysons West will add 700 multifamily units and 100,000 square feet of additional fast-casual retailers, providing a direct infusion to the growing live-work-play environment surrounding the property.



SURROUNDING AMENITIES

Concourse Tysons is a short drive away from destination shopping centers and restaurants. Less than a mile away, discover the new Boro District with the largest Whole Foods Market on the east coast and with premier restaurants like North Italia, Open Road, Fish Taco & Santouka Ramen.



TIME TO

- ▶ **Boro District:** 4 minutes
- ▶ **Tysons Galleria:** 6 minutes
- ▶ **Tysons Corner Center:** 8 minutes

MULTIPLE SIGNAGE
OPTIONS AVAILABLE



AVAILABLE SPACE

CONCOURSE TYSONS

1593 SPRING HILL RD

1595 SPRING HILL RD

100,512 SF CONTIGUOUS	7	[Dark Blue Bar]				SUITE 700 FULL FLOOR - 25,780 SF			
	6	SUITE 600 FULL FLOOR - 26,184 SF				[Dark Blue Bar]			
	5	SUITE 500 11,986 SF	SUITE 510 2,011 SF	SUITE 520 2,590 SF	SUITE 530 8,959 SF	SUITE 500 11,263 SF		[Dark Blue Bar]	
	4	SUITE 450 22,698 SF				[Dark Blue Bar]			
	3	SUITE 300 FULL FLOOR - 26,084 SF				SPEC SUITE SUITE 310 1,565 SF	SUITE 300 10,462 SF		[Dark Blue Bar]
	2	SUITE 220 10,017 SF		[Dark Blue Bar]		SUITE 200 FULL FLOOR - 26,084 SF			
	1	SUITE 100 3,224 SF	SUITE 125 2,101 SF	FITNESS CENTER	CAFE	CONFERENCE CENTER	SUITE 100 4,230 SF	SUITE 104 1,247 SF	SUITE 110 8,664 SF

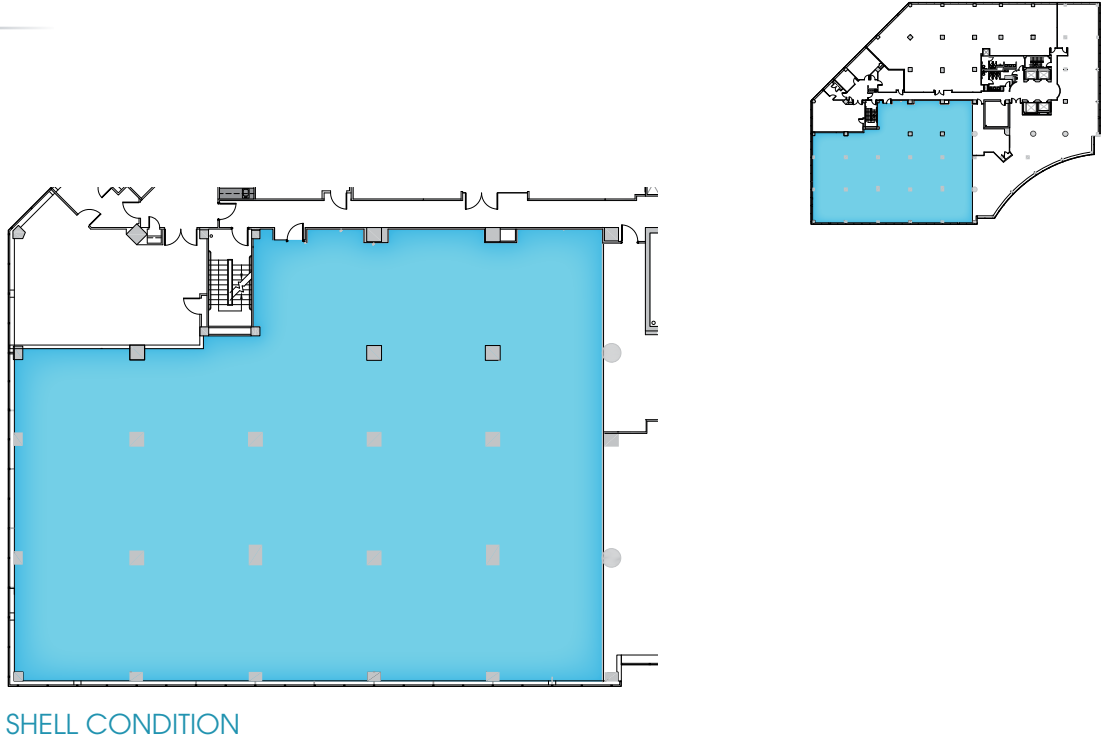
1593 SPRING HILL RD

1ST FLOOR



1593 SPRING HILL RD

SUITE 220 10,017 SF



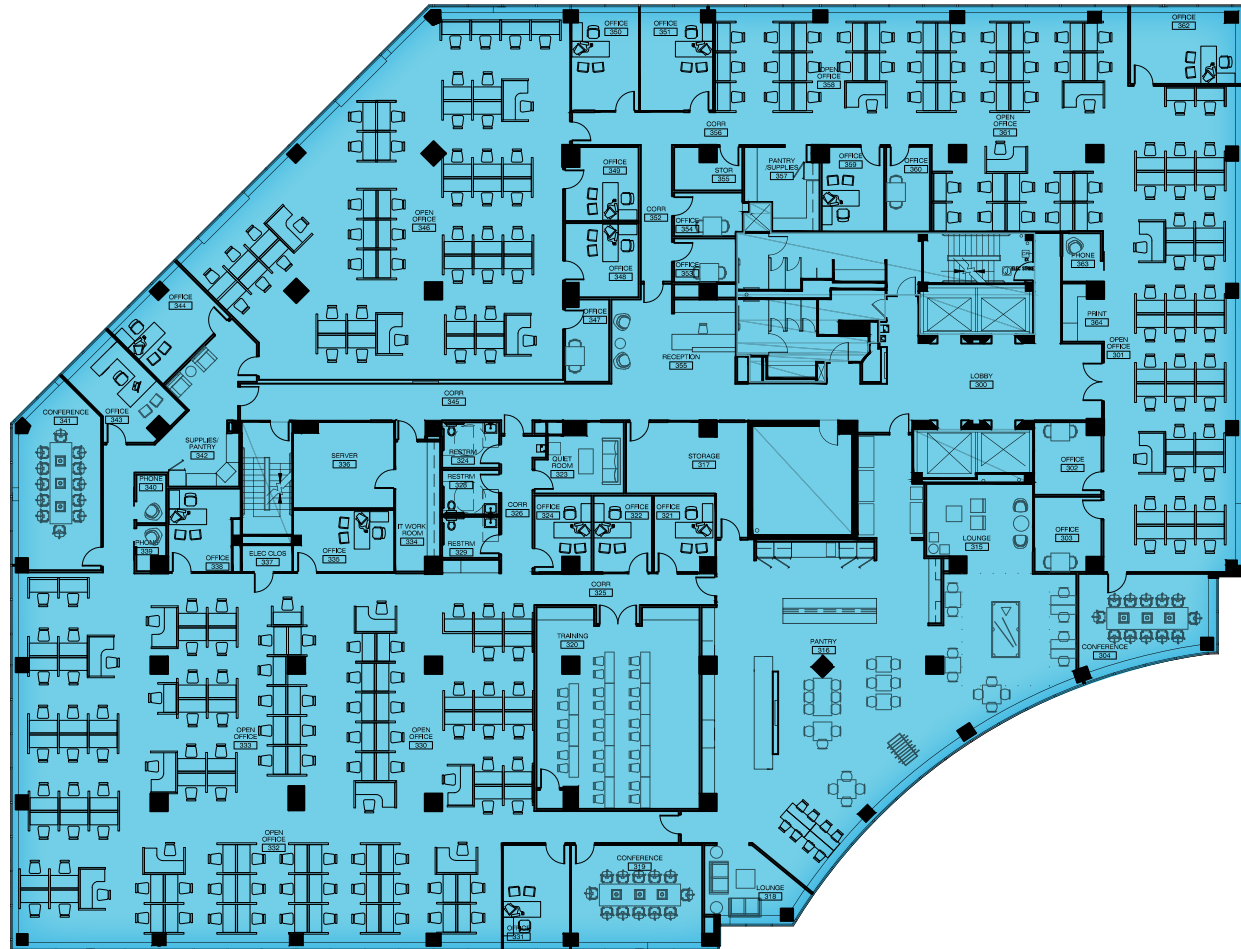
1593 SPRING HILL RD

SUITE 300

26,184 SF

MAX. CONTIG.: 100,512 SF

AVAILABLE 1/1/24

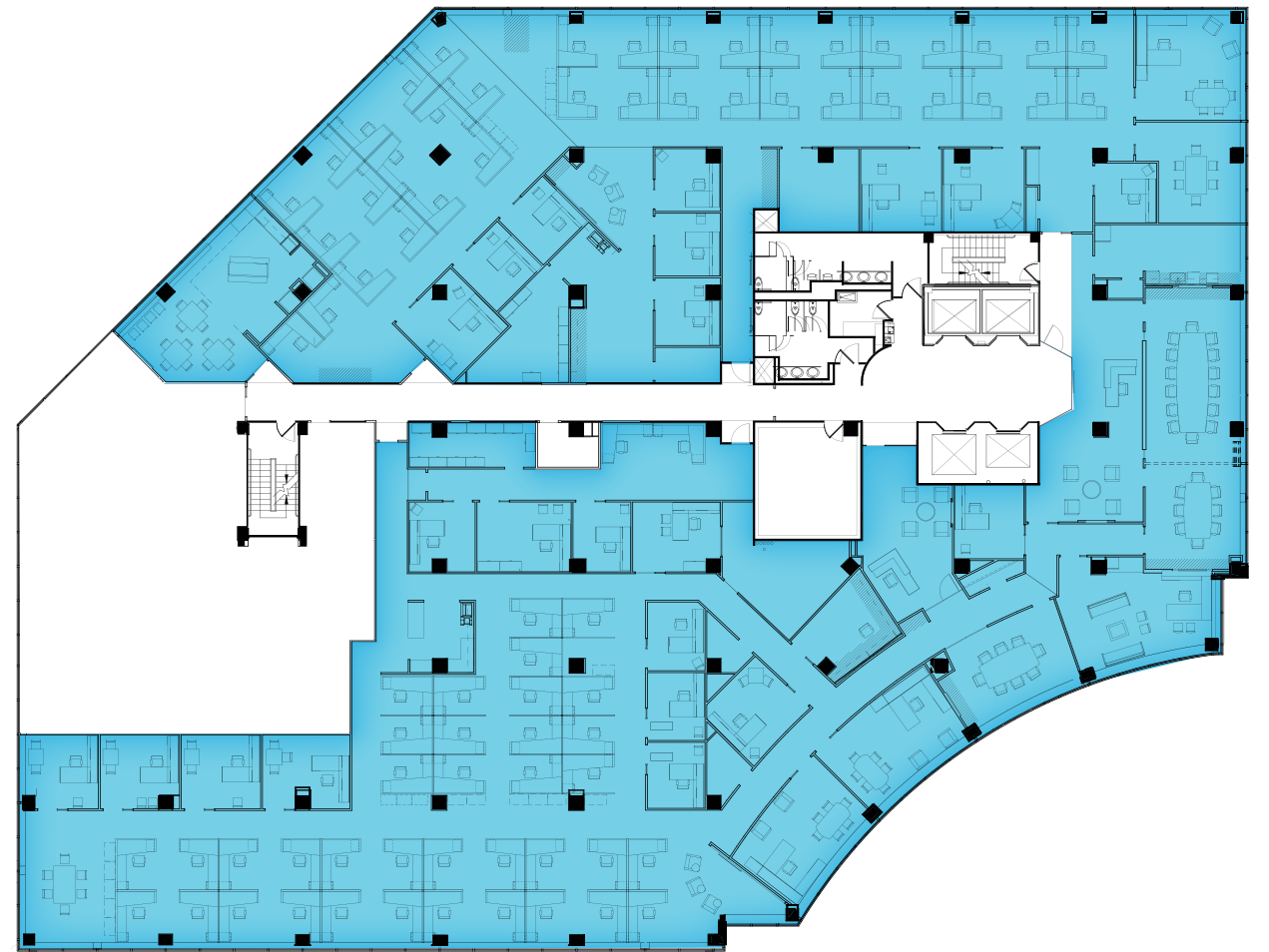


1593 SPRING HILL RD

SUITE 450

22,698 SF

MAX. CONTIG.: 100,512 SF



CONCOURSE
TYSONS

AG ANGELO
GORDON

Atlantic
REALTY COMPANIES

CBRE

1593 SPRING HILL RD

5TH FLOOR

FULL FLOOR: 25,546 SF

MAX. CONTIG.: 100,512 SF

1593 SPRING HILL RD

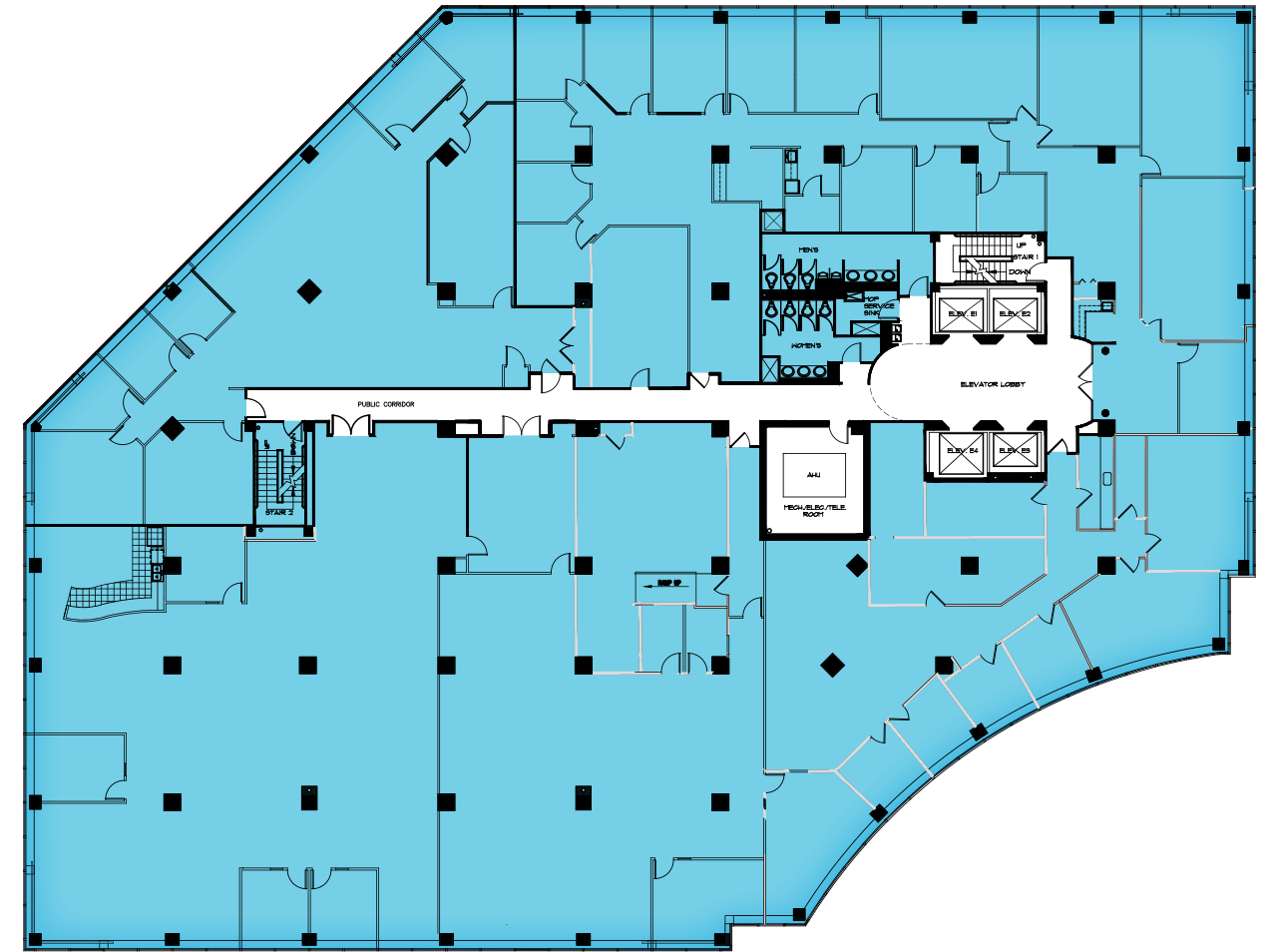
SUITE 600

26,184 SF

MAX. CONTIG.: 100,512 SF

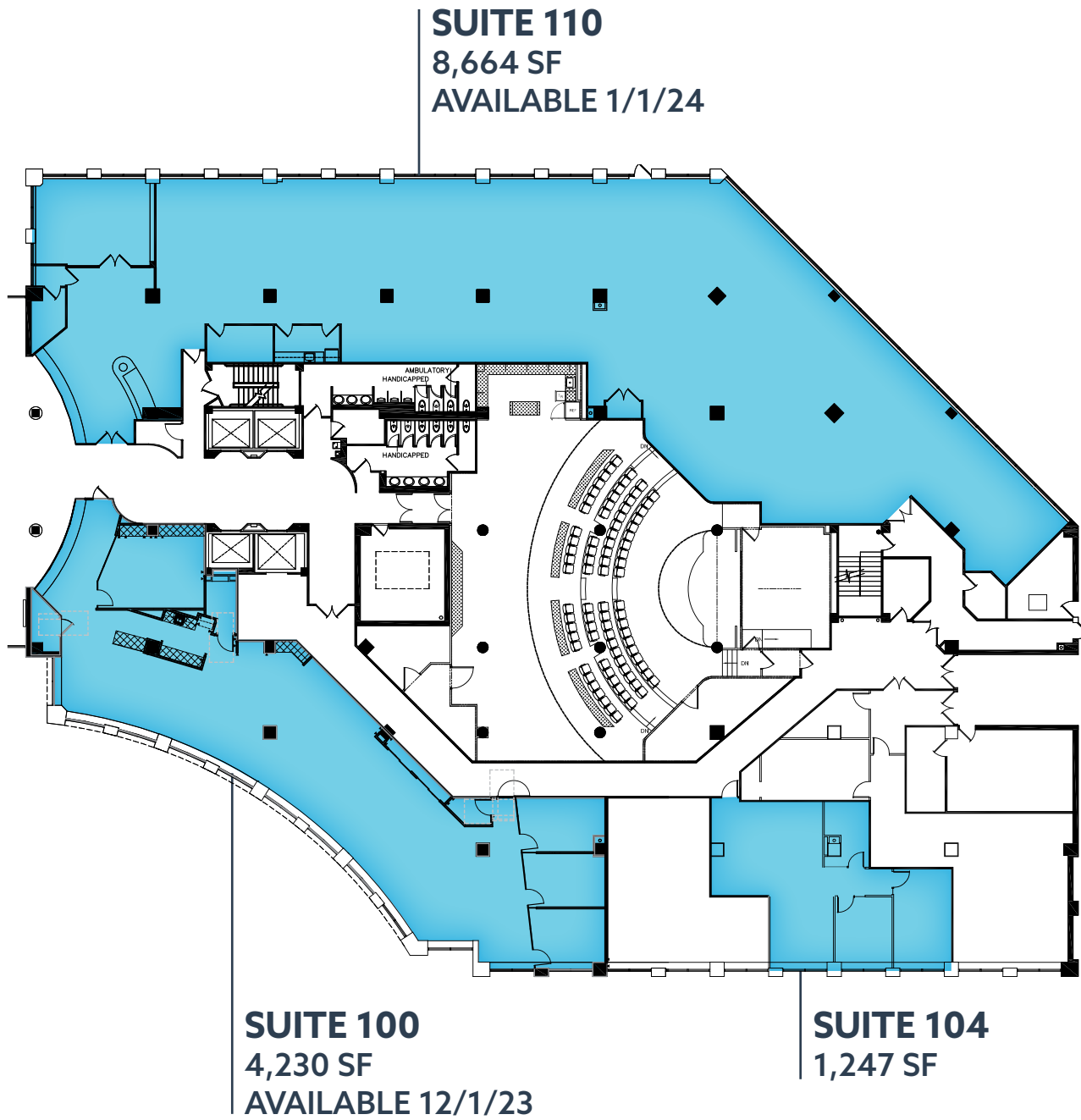


[VIRTUAL TOUR](#)



1595 SPRING HILL RD

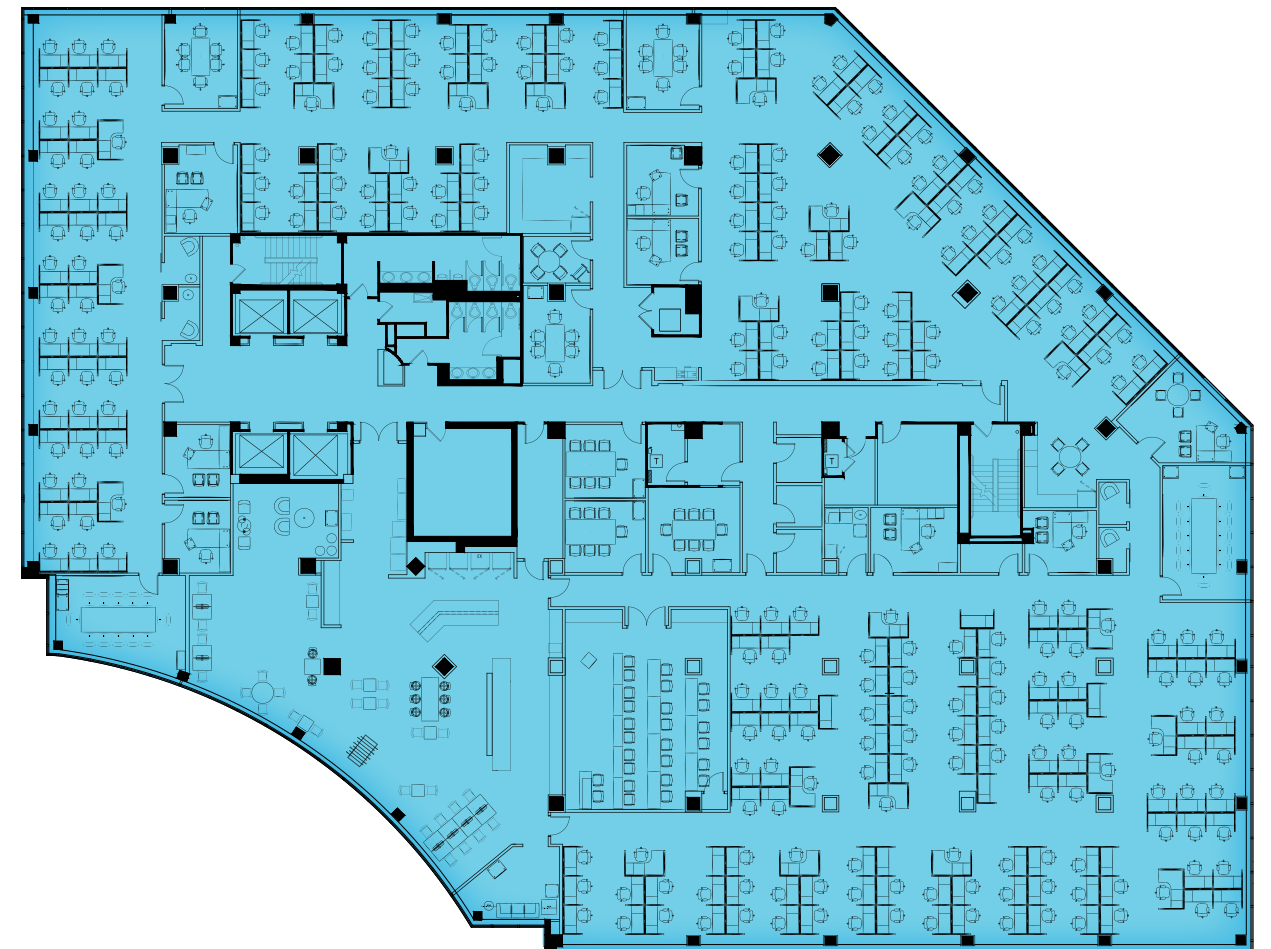
1ST FLOOR



1595 SPRING HILL RD

SUITE 200

26,084 SF

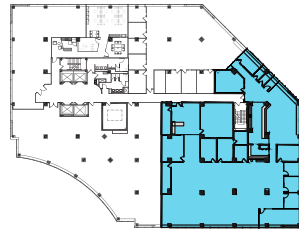
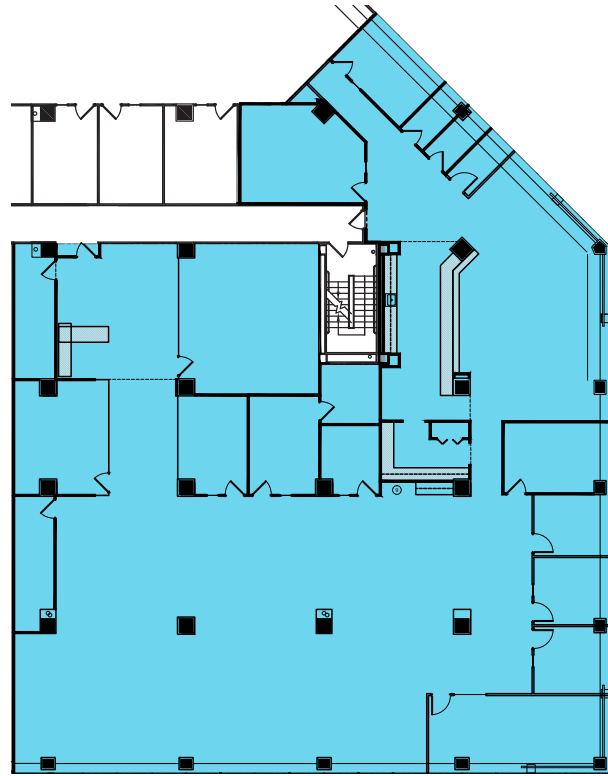


1595 SPRING HILL RD

SUITE 300

10,462 SF

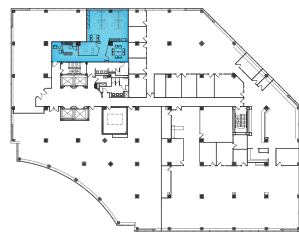
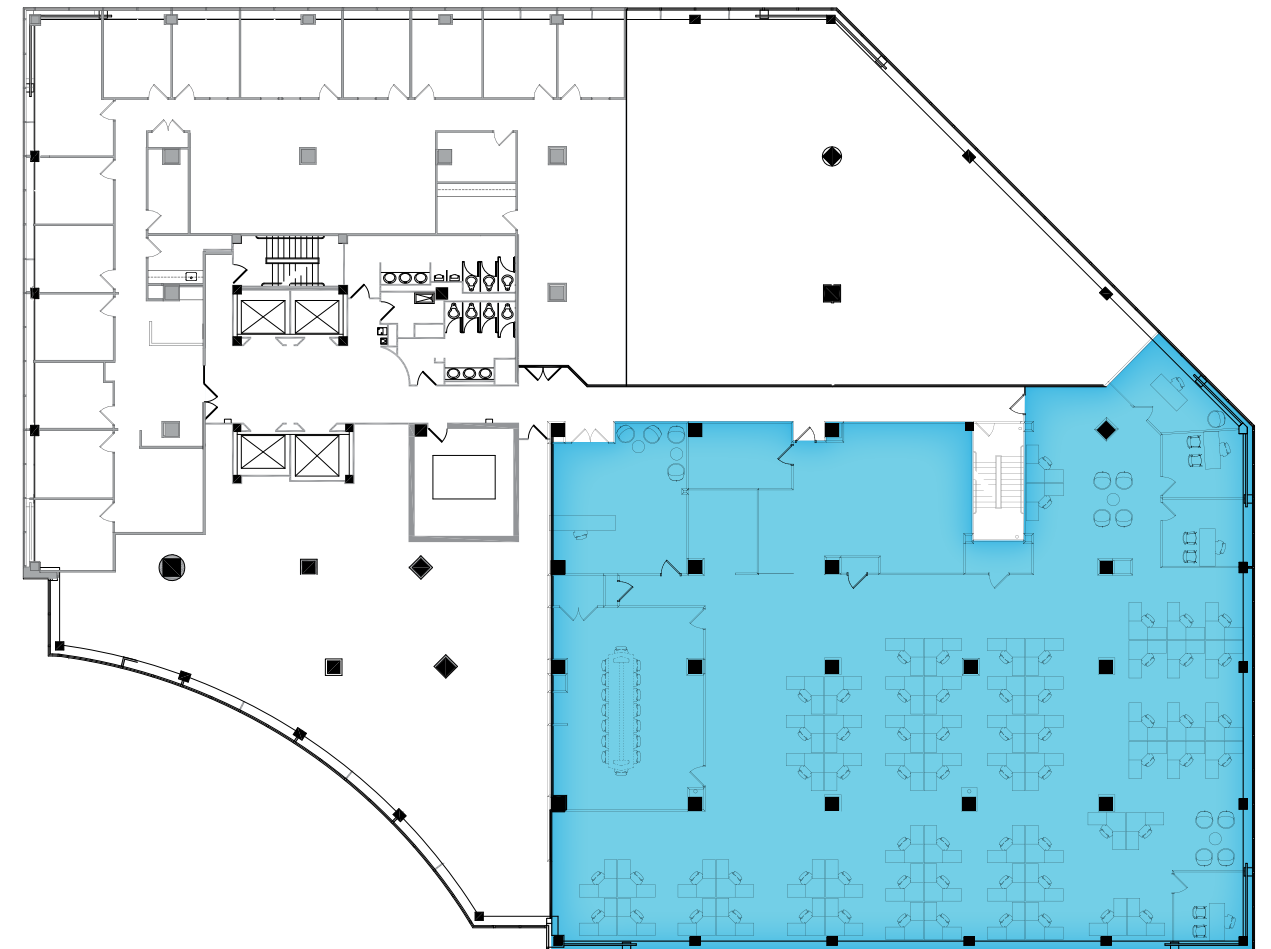
AVAILABLE 11/1/23



1595 SPRING HILL RD

SUITE 500

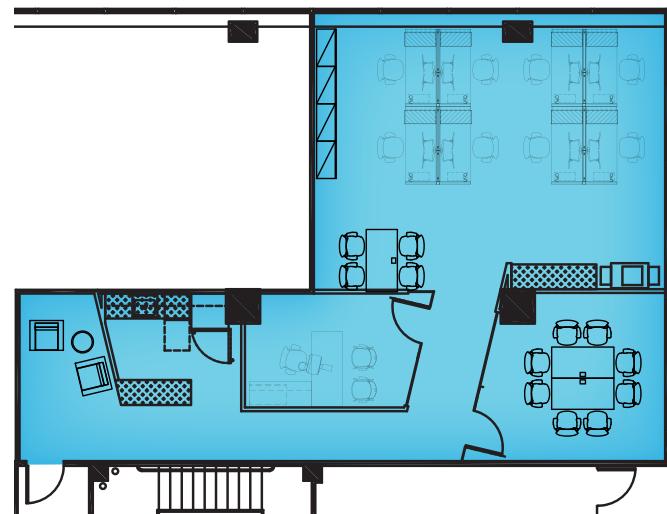
11,263 SF



1595 SPRING HILL RD

SPEC SUITE 310

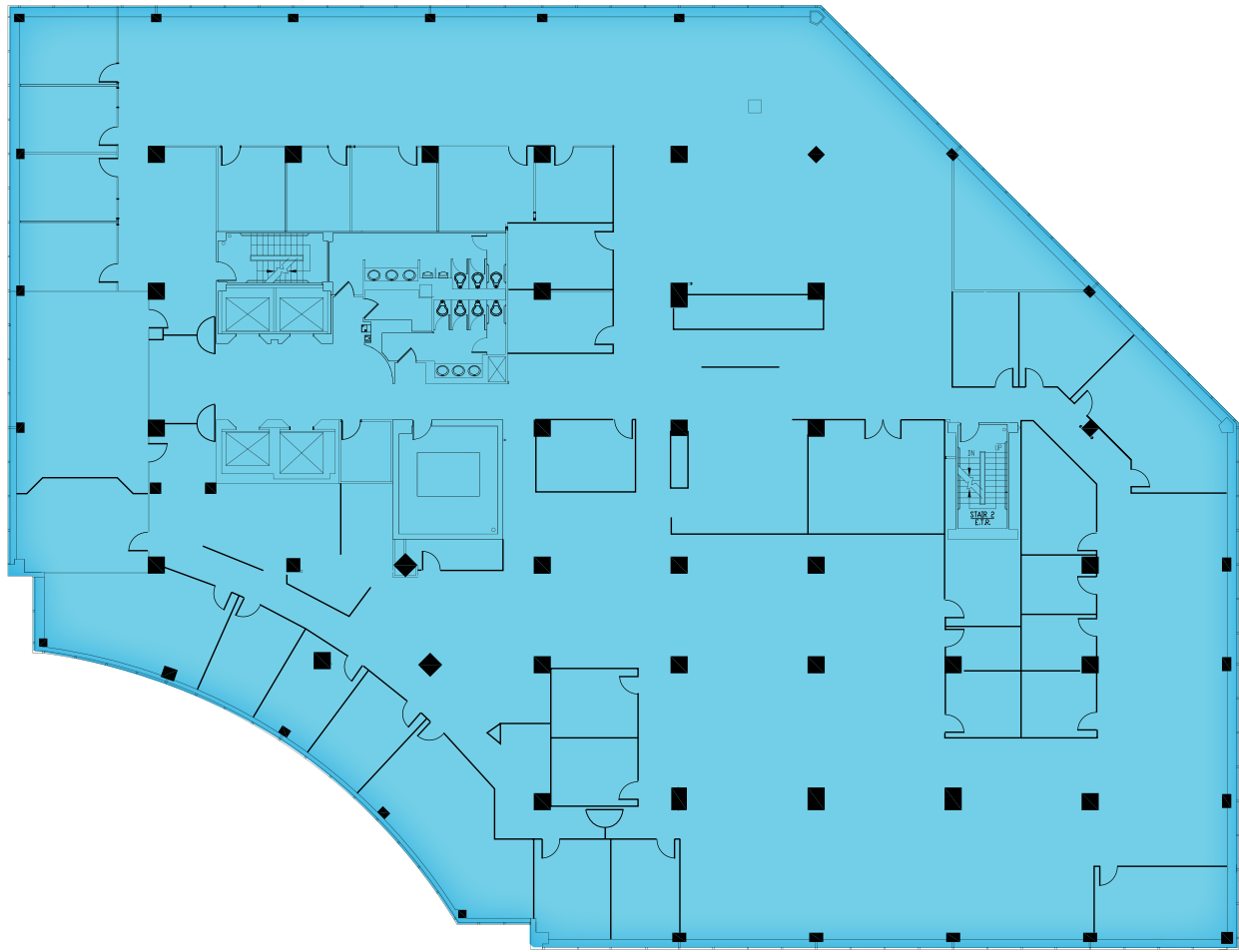
1,565 SF



1595 SPRING HILL RD

SUITE 700

25,780 SF



CONCOURSE

TYSONS

CONCOURSE
TYSONS

AG ANGELO
GORDON

Atlantic
REALTY COMPANIES

CBRE

CONCOURSE

TYSONS

LEASING INFORMATION

Brett Schweitzer
+1 703 905 0253
brett.schweitzer@cbre.com

Quinn Reiley
+1 703 905 0211
quinn.reiley@cbre.com

Terry Reiley
+1 703 905 0236
terry.reiley@cbre.com

John DiCamillo
+1 703 734 4723
john.dicamillo@cbre.com



© 2023 CBRE, Inc. This information has been obtained from sources believed reliable. We have not verified it and make no guarantee, warranty or representation about it. Any projections, opinions, assumptions or estimates used are for example only and do not represent the current or future performance of the property. You and your advisors should conduct a careful, independent investigation of the property to determine to your satisfaction the suitability of the property for your needs. CBRE and the CBRE logo are service marks of CBRE, Inc. and/or its affiliated or related companies in the United States and other countries. All other marks displayed on this document are the property of their respective owners.