

±378 SF - ±1,696 SF OFFICE SPACE
AVAILABLE FOR LEASE
4849 RONSON COURT, SAN DIEGO, CA 92111



JOSH WEST, SIOR
Senior Vice President/Partner | Lic. #01923375
858.458.3358 | jwest@voitco.com

BRIAN MULVANEY, SIOR, CCIM
Senior Vice President/Partner | Lic. #00938944
858.458.3372 | bmulvaney@voitco.com

Voit
REAL ESTATE SERVICES



BUILDING FEATURES

SUITE SIZE AVAILABILITY

105 ±1,696 SF NOW

111A ±378 SF NOW

±30,000 SF
BUILDING SIZE

YES
ELEVATOR SERVED

TWO (2)
STORIES

MULTI
TENANCY

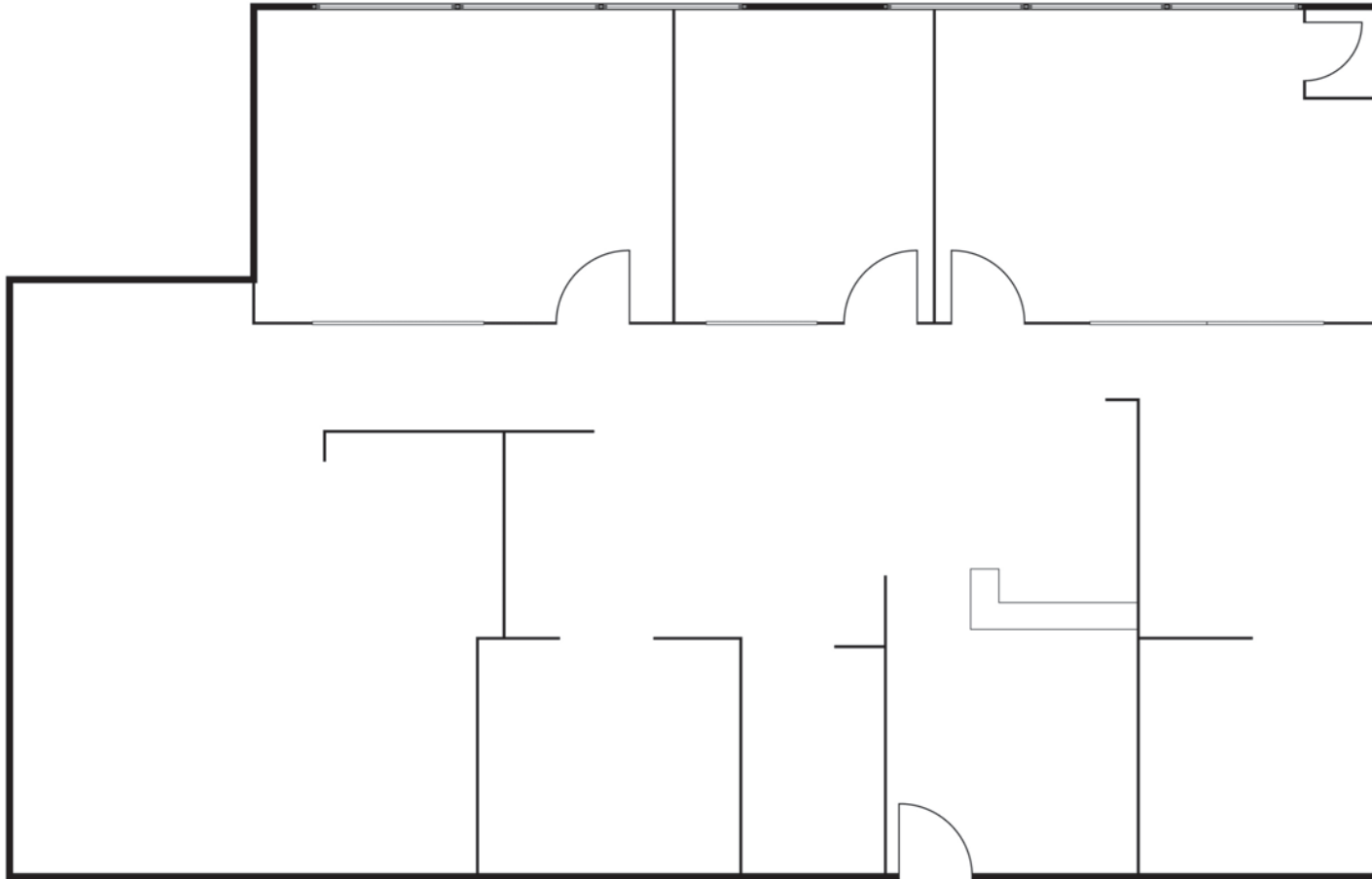
1978/2009
YEAR BUILT/RENOVATED

±4.00/1,000 SF
PARKING RATIO

IS-2-1
ZONING

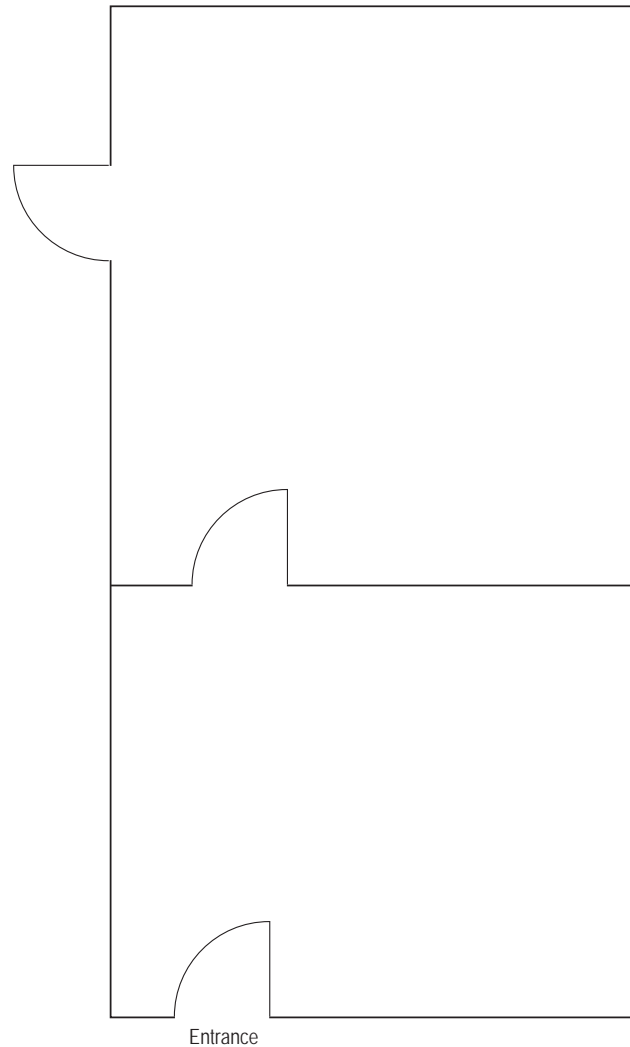
KEARNY MESA
SUBMARKET

FLOOR PLAN

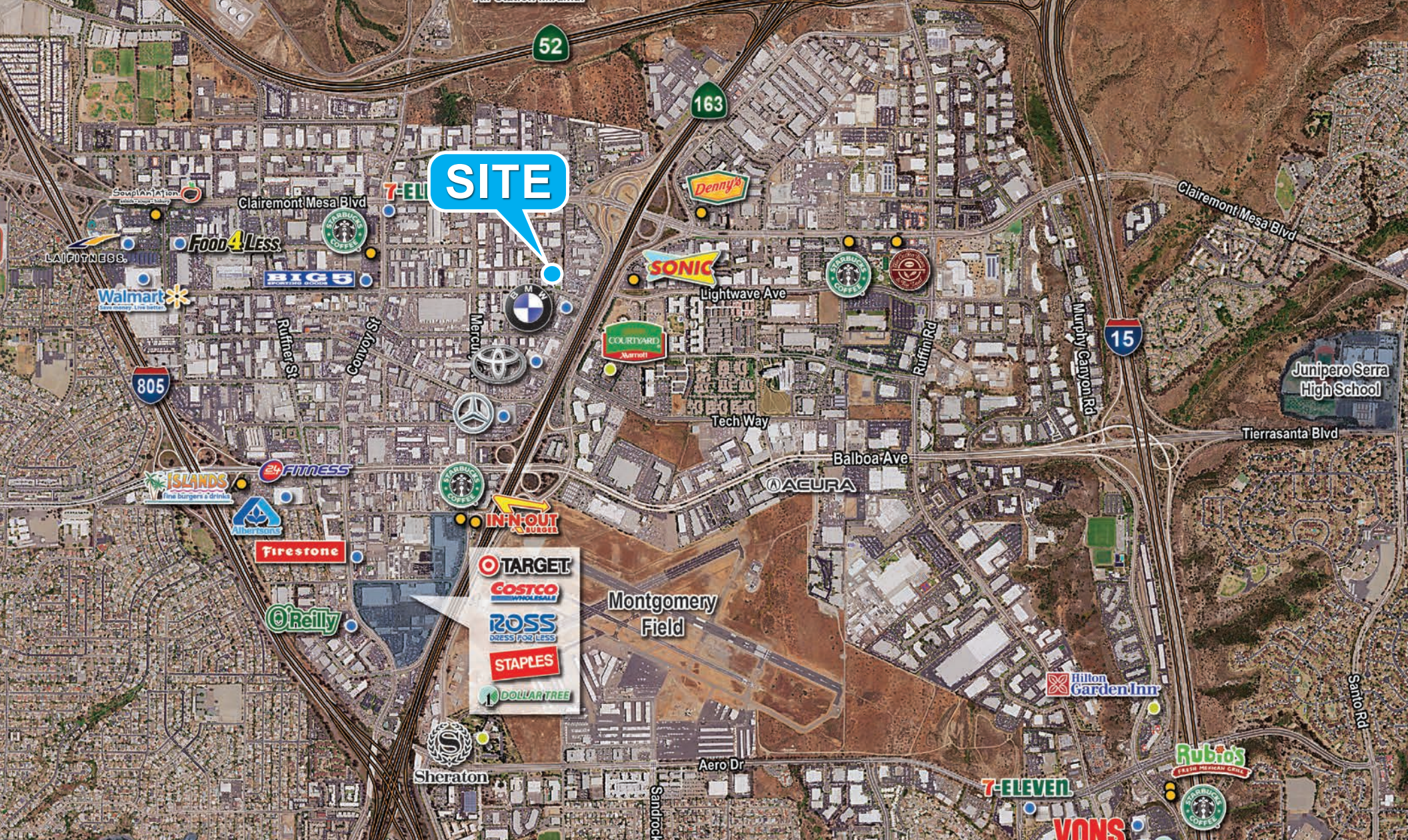


SUITE: 105 | **SIZE:** ±1,696 SF | **AVAILABILITY:** NOW
RATE: \$1.75 /SF/MO. + ELECTRICITY (\$0.30 PSF/MO.)

FLOOR PLAN



SUITE: 111A | **SIZE:** ±378 SF | **AVAILABILITY:** NOW
RATE: \$1.75 /SF/MO. + ELECTRICITY (\$0.30 PSF/MO.)



JOSH WEST, SIOR
 Senior Vice President, Partner | Lic. #01923375
 858.458.3358 | jwest@voitco.com

BRIAN MULVANEY, SIOR, CCIM
 Senior Vice President, Partner | Lic. #00938944
 858.458.3372 | bmulvaney@voitco.com

Voit
 REAL ESTATE SERVICES

4180 La Jolla Village Drive, Suite 100, La Jolla, CA 92037 • 858.453.0505 • 858.408.3976 Fax • Lic #01991785 • www.voitco.com

Licensed as a Real Estate Salespersons by the DRE. The information contained herein has been obtained from sources we deem reliable. While we have no reason to doubt its accuracy, we do not guarantee it. ©2026 Voit Real Estate Services, Inc. All Rights Reserved.