



DTSJ | ±535 - ±6,127 SF Office Spaces For Lease

**387 S FIRST STREET
SAN JOSE, CA**

Available Spaces

Suite 220/230: ±3,164 SF

- Divisible to Suite 220 (1,734 RSF) and Suite 230 (1,430 RSF)
- Plug N Play Opportunity
- 3 Private Offices
- Open Floor Plan with Desk Seating for 20 people
- 8 Person Conference Area
- Kitchenette

Suite 240: ±535 RSF

- One (1) Large Open Area

Suite 300: ±6,127 RSF

- Receptionist/Lobby
- Conference room
- 6 Semi-Private Offices
- Work Room
- Kitchenette
- Large Open Area

Property Highlights

- Cool, Chic Urban Building
- LEED Platinum Certified
- Beautiful Exposed Concrete Walls and Ceilings
- Modern Finishes with Tasteful Blend of Metal, Wood and Glass Materials
- Spacious, Modern Look and Feel
- Large Skylights and Large Windows Offering Lots of Natural Light
- Restrooms with Shower Stalls Also Available
- Elevator Served

For information, please contact:

Geri Wong

Senior Managing Director

t 408-987-4134

geri.wong@nmrk.com

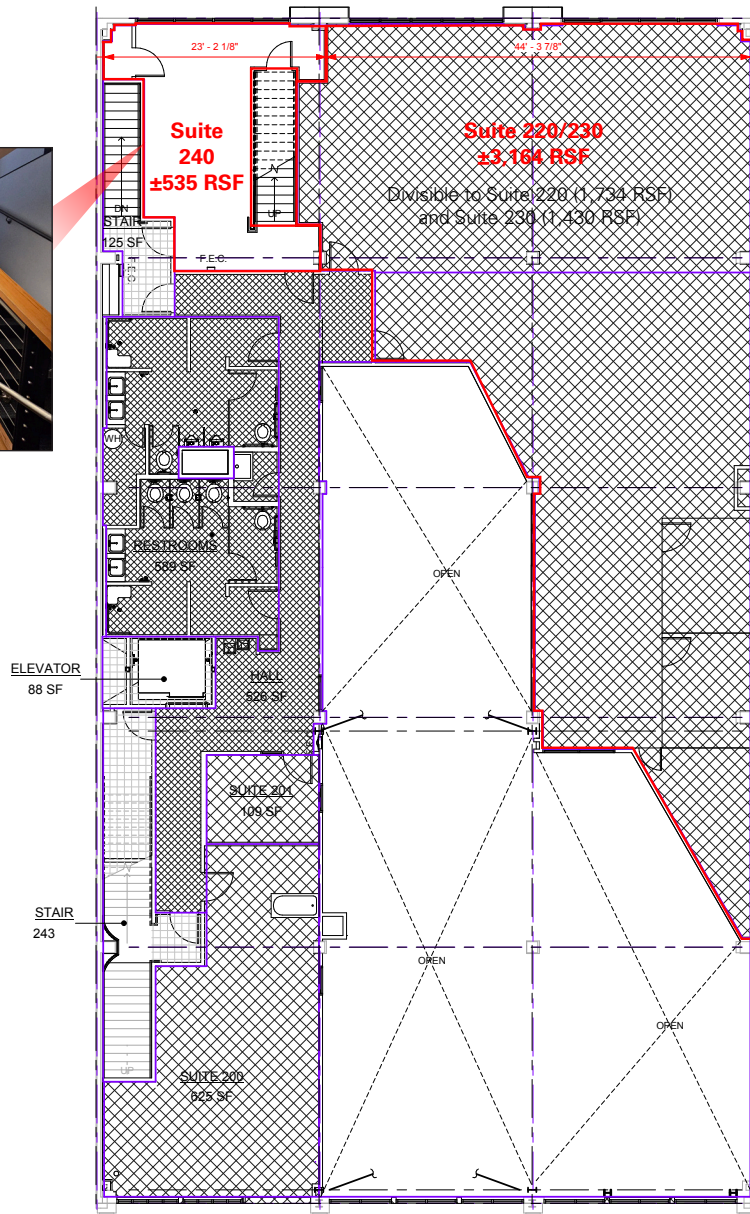
CA RE License #01142432

nmrk.com

NEWMARK

The distributor of this communication is performing acts for which a real estate license is required. The information contained herein has been obtained from sources deemed reliable but has not been verified and no guarantee, warranty or representation, either express or implied, is made with respect to such information. Terms of sale or lease and availability are subject to change or withdrawal without notice. 8294685 • 01/25

Floor Plan



*This floor plan is not drawn to scale.

For information, please contact:

Ger Wong

Senior Managing Director

t 408-987-4134

geri.wong@nmrk.com

CA RE License #01142432

nmrk.com

NEWMARK

The distributor of this communication is performing acts for which a real estate license is required. The information contained herein has been obtained from sources deemed reliable but has not been verified and no guarantee, warranty or representation, either express or implied, is made with respect to such information. Terms of sale or lease and availability are subject to change or withdrawal without notice. 8294685 • 01/25

Gallery - Suite 220/230



For information, please contact:

Ger Wong

Senior Managing Director

t 408-987-4134

geri.wong@nmrk.com

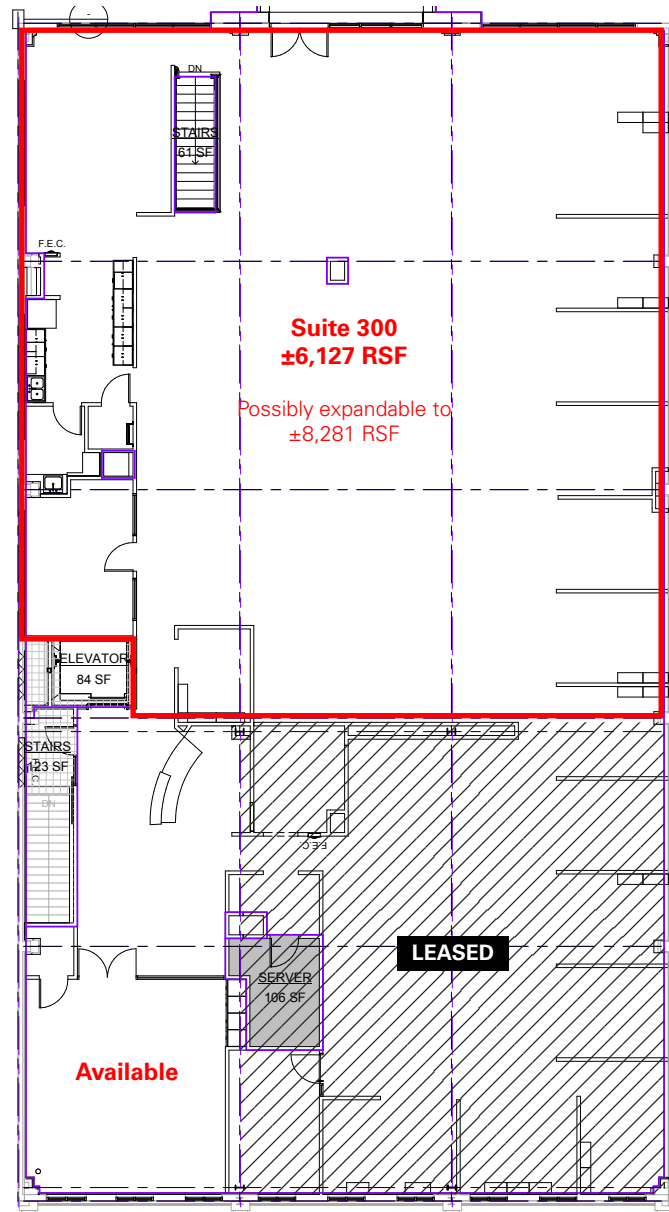
CA RE License #01142432

nmrk.com

NEWMARK

The distributor of this communication is performing acts for which a real estate license is required. The information contained herein has been obtained from sources deemed reliable but has not been verified and no guarantee, warranty or representation, either express or implied, is made with respect to such information. Terms of sale or lease and availability are subject to change or withdrawal without notice. 8294685 • 01/25

Floor Plan



*This floor plan is not drawn to scale.

For information, please contact:

Geri Wong

Senior Managing Director

t 408-987-4134

geri.wong@nmrk.com

CA RE License #01142432

nmrk.com

NEWMARK

The distributor of this communication is performing acts for which a real estate license is required. The information contained herein has been obtained from sources deemed reliable but has not been verified and no guarantee, warranty or representation, either express or implied, is made with respect to such information. Terms of sale or lease and availability are subject to change or withdrawal without notice. 8294685 • 01/25

Gallery - Suite 300



For information, please contact:

Geri Wong

Senior Managing Director

t 408-987-4134

geri.wong@nmrk.com

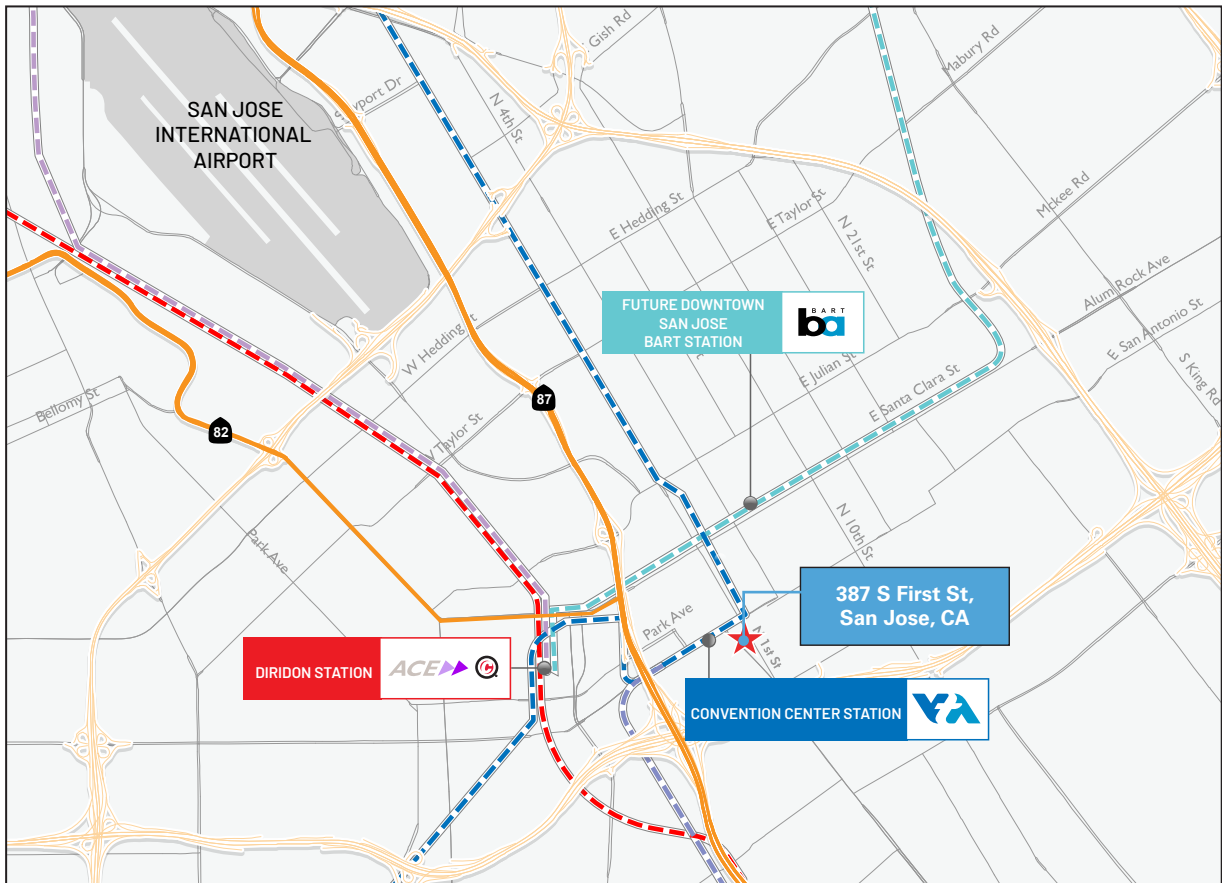
CA RE License #01142432

nmrk.com

NEWMARK

The distributor of this communication is performing acts for which a real estate license is required. The information contained herein has been obtained from sources deemed reliable but has not been verified and no guarantee, warranty or representation, either express or implied, is made with respect to such information. Terms of sale or lease and availability are subject to change or withdrawal without notice. 8294685 • 01/25

Amenities Map



For information, please contact:

Ger Wong

Senior Managing Director

t 408-987-4134

geri.wong@nmrk.com

CA RE License #01142432

nmrk.com

NEWMARK

The distributor of this communication is performing acts for which a real estate license is required. The information contained herein has been obtained from sources deemed reliable but has not been verified and no guarantee, warranty or representation, either express or implied, is made with respect to such information. Terms of sale or lease and availability are subject to change or withdrawal without notice. 8294685 • 01/25