



## JLL METRO DC INDUSTRIAL TEAM

John Dettleff  
703.485.8831  
john.dettleff@jll.com

Dan Coats  
703.891.8410  
dan.coats@jll.com

Abbot Wallenborn  
703.891.8437  
abbot.wallenborn@jll.com



93,000 SF AND  
21,000 SF  
FULL BUILDINGS  
AVAILABLE



IMMEDIATE  
ACCESS TO  
I-495, I-95, RT 200



LIGHT  
INDUSTRIAL  
SPACE



INSTITUTIONALLY  
OWNED AND  
MANAGED

**DC LIGHT**  
Indian Creek Tech Park

**12001 Indian Creek Court**

**12051 Indian Creek Court**  
93,000 SF  
FULL BUILDING AVAILABLE

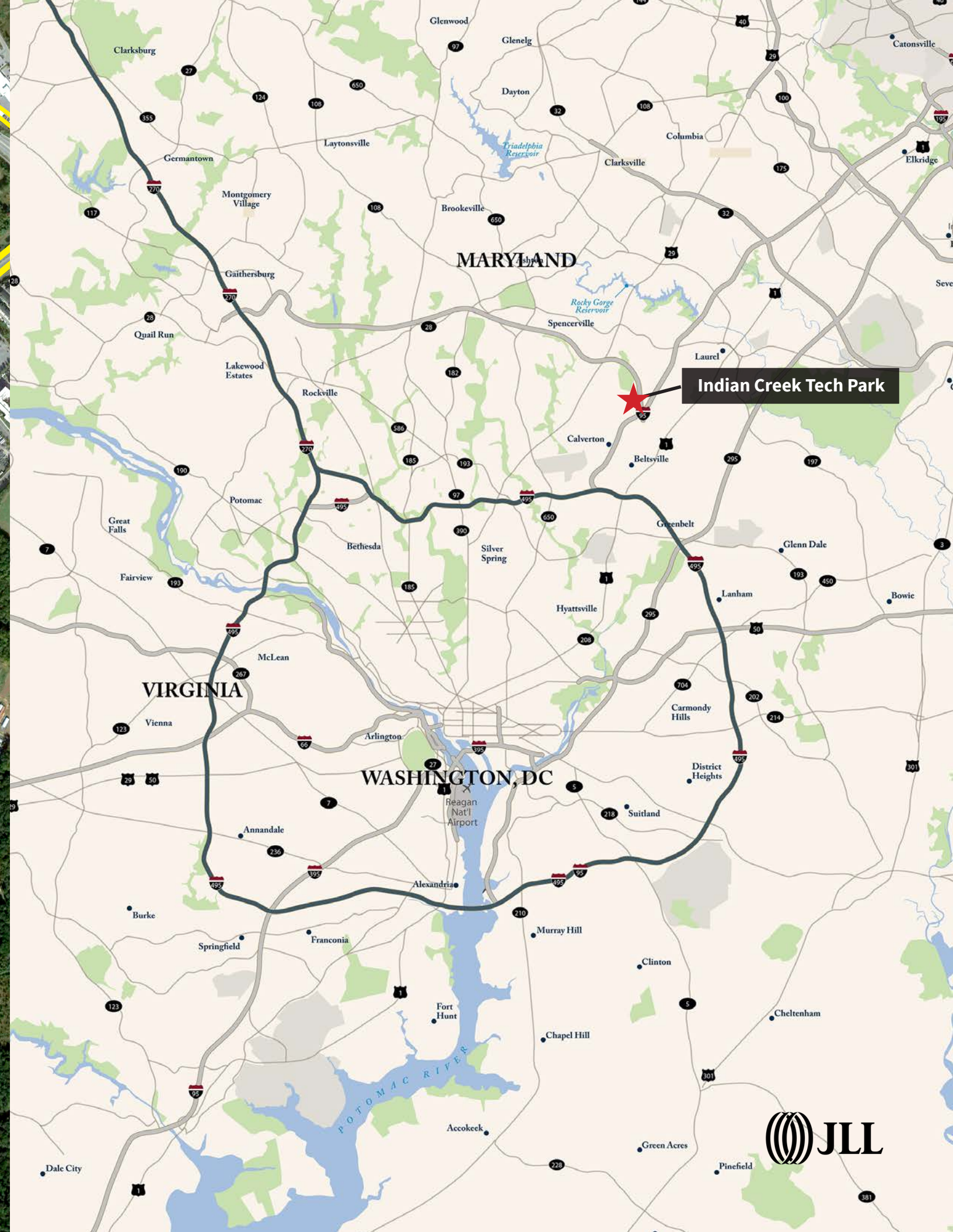
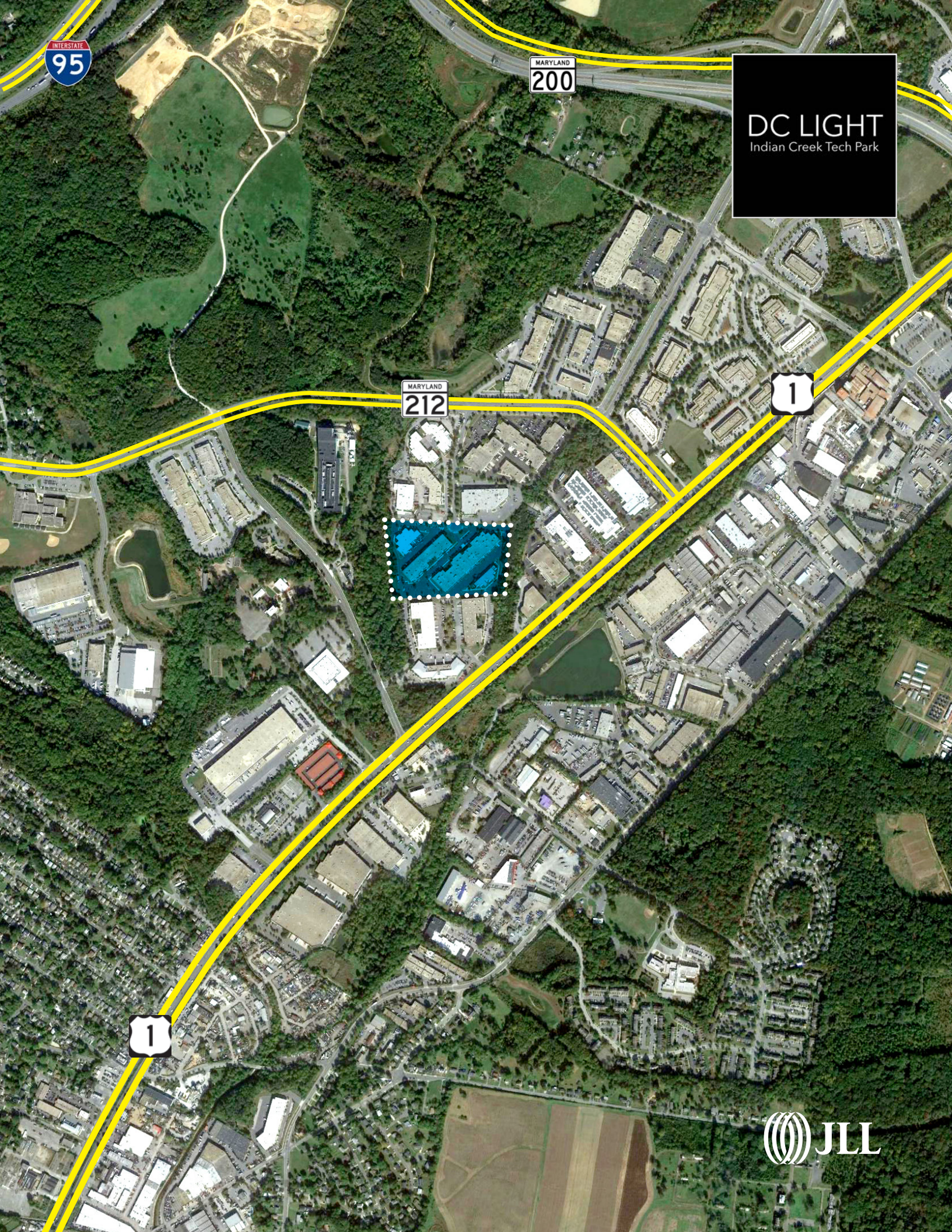
**12000 Indian Creek Court**

**12040 Indian Creek Court**









**DC LIGHT**  
Indian Creek Tech Park

**FOR MORE INFORMATION,  
PLEASE CONTACT:**



**John Dettleff**  
703.485.8831  
[john.dettleff@jll.com](mailto:john.dettleff@jll.com)

**Dan Coats**  
703.891.8410  
[dan.coats@jll.com](mailto:dan.coats@jll.com)

**Abbot Wallenborn**  
703.891.8437  
[abbot.wallenborn@jll.com](mailto:abbot.wallenborn@jll.com)

Although information has been obtained from sources deemed reliable, neither Owner nor JLL makes any guarantees, warranties or representations, express or implied, as to the completeness or accuracy as to the information contained herein. Any projections, opinions, assumptions or estimates used are for example only. There may be differences between projected and actual results, and those differences may be material. The Property may be withdrawn without notice. Neither Owner nor JLL accepts any liability for any loss or damage suffered by any party resulting from reliance on this information. If the recipient of this information has signed a confidentiality agreement regarding this matter, this information is subject to the terms of that agreement. ©2022. Jones Lang LaSalle IP, Inc. All rights reserved.