



10801

NATIONAL

10801 National Boulevard, Los Angeles, CA 90064



2025



OVERVIEW

Located in the heart of West Los Angeles, 10801 National Blvd is a distinguished six-story commercial property offering approximately 64,000 square feet of flexible office and retail space. Designed by renowned architect Edward Durell Stone, the building features a refined blend of gardenia white concrete and bronze-tinted glass that embodies timeless architectural style. The entry lobby welcomes visitors with a soaring two-story ceiling and a central water lagoon with mosaic-lit fountains, creating a professional and inviting atmosphere. Tenants benefit from convenient access to both the 10 and 405 Freeways, as well as close proximity to local shops, restaurants, and public transit along National and Westwood Boulevards. The property includes on-site and subterranean parking, high ceilings, floor-to-ceiling windows with abundant natural light, and flexible floor plans suited for a variety of commercial uses, including office, medical, or financial services.



6 floors



Next to the 10 & 405 Freeways



24/7 CCTV Security



\$100/Month Reserved Parking



Controlled Access



On-Site Property Manager



Walkable Metro Distance



200 - 13,400 SF Units



Sasha David Rahban
310.963.9680
sasha@saravitaproperties.com



Property Information

Location:

10801 National Boulevard, Los Angeles, CA 90064

Rental Rate:

Available Upon Request / Negotiable

Occupancy:

Immediate

Features:

- High Ceilings
- Floor to Ceiling Windows
- Flexible Layout
- Great Location for Exposure
- Subterranean Parking

Lease Type:

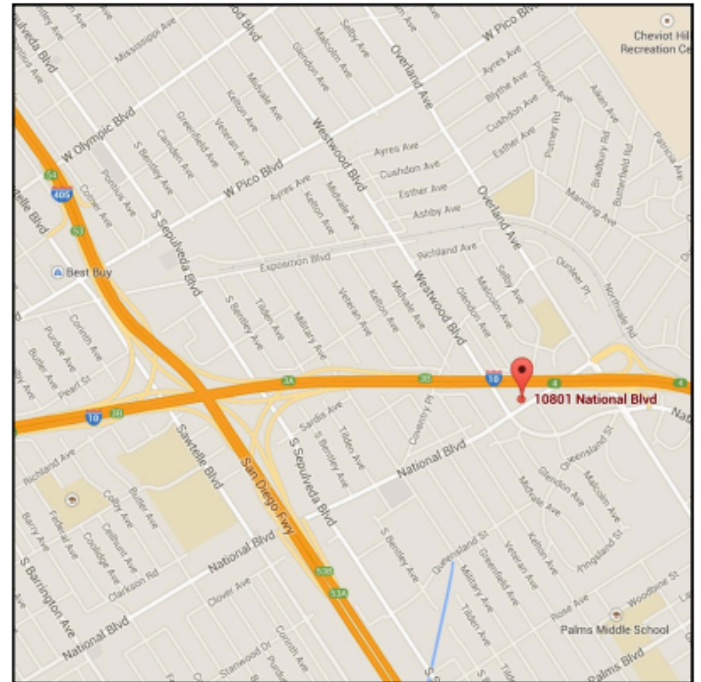
Full Service Rental

Tenant Improvements:

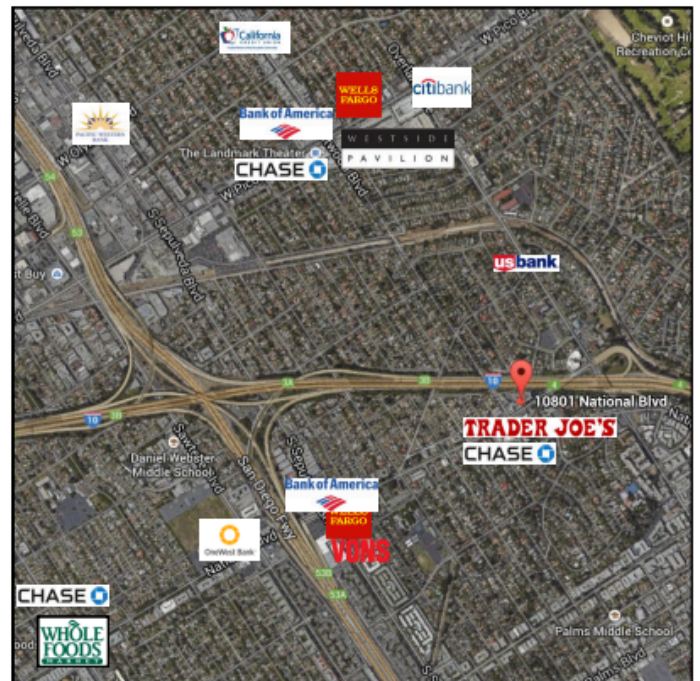
Negotiable



MAP VIEW



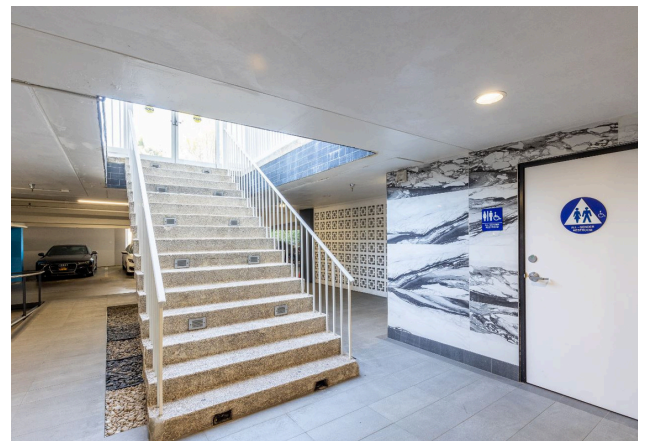
ARIEL VIEW



Sasha David Rahban
310.963.9680
sasha@saravitaproperties.com



Photos



Sasha David Rahban
310.963.9680
sasha@saravitaproperties.com



10801
NATIONAL

Contact Us

Sasha David Rahban
310.963.9680
sasha@saravitaproperties.com

10801 National Blvd STE 601, Los Angeles, CA 90064

