

1 2 3 4 5 6 7 8 9 10 11 12 13 14 15

A B C D E F G H I J K L

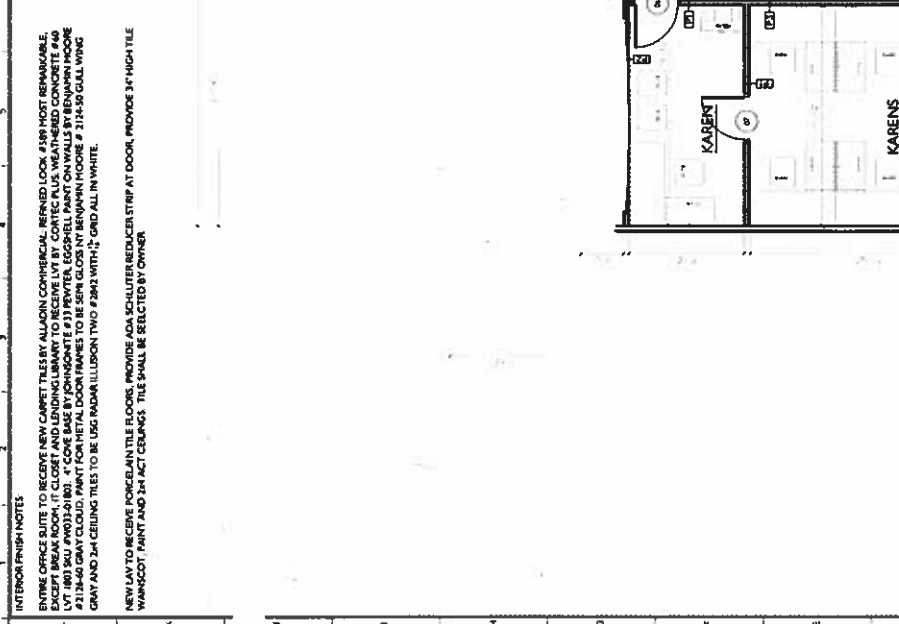
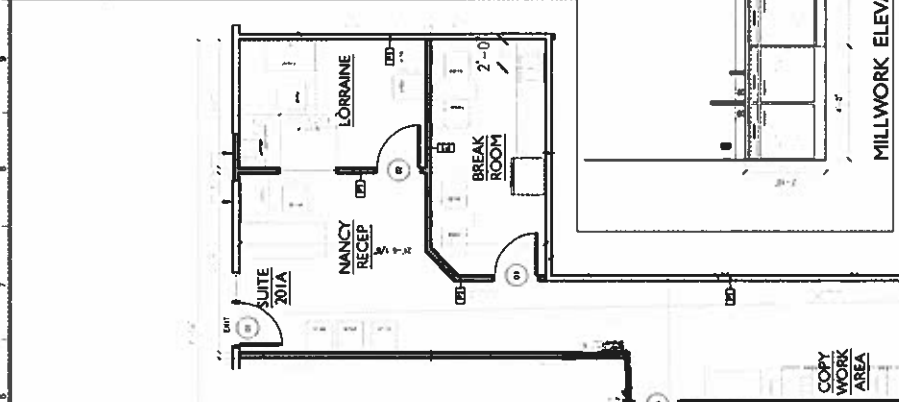
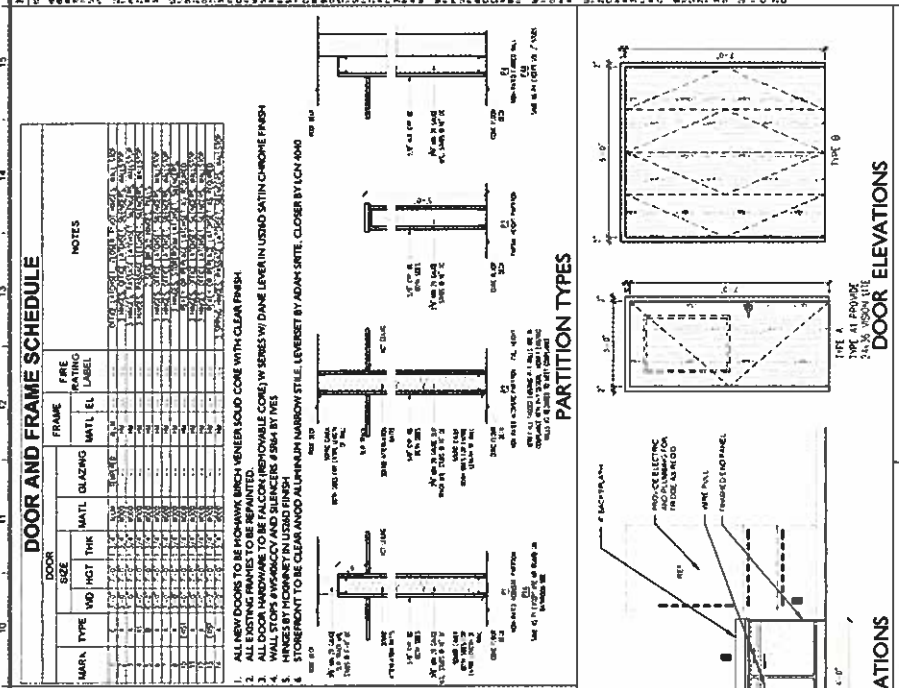
INTERIOR FINISH NOTES
 ENTIRE OFFICE SUITE TO RECEIVE NEW CARPET TILES BY ALUMINUM COMMERCIAL SPINLED LOCK #189 MOST REMARKABLE EXCEPT BREAK ROOM, IT CLOSET AND LENDING LIBRARY TO RECEIVE LVT BY CORTEC PLUS WEATHERED CONCRETE #40 LVT #803 SUI #9032-0180, 4" CORE BASE BY JOHNSONITE #33 PAVIER, EGGSHELL PAINT ON WALLS BY BENVANNI MOORE #218-040 GRAY CLOUD PAINT FOR METAL DOOR FINISHES TO BE SPRAY GLOSS BY BENVANNI MOORE # 214-59 GULL WING GRAY AND 24" CEILING TILES TO BE USE MODA (LUDON TWO #289) WHITE, GRID ALL IN WHITE.
 NEW LAY TO RECEIVE PORCELAN TILE FLOOR, PROVIDE ADA SLOTTED REDUCER STRIP AT DOOR, PROVIDE 3/4" HIGH TILE WANGOOD TANK AND 24" ACT COUINGS. TILE SHALL BE SELECTED BY OWNER.

DOOR AND FRAME SCHEDULE

DOOR	TYPE	NO	HT	THK	MATL	GLAZING	FRAME	FINISH	EL	NOTE
1	SW	1	80"	1 3/4"	ALUMINUM	GLASS	ALUMINUM	BRUSHED	1	SEE NOTE 1
2	SW	2	80"	1 3/4"	ALUMINUM	GLASS	ALUMINUM	BRUSHED	1	SEE NOTE 1
3	SW	3	80"	1 3/4"	ALUMINUM	GLASS	ALUMINUM	BRUSHED	1	SEE NOTE 1
4	SW	4	80"	1 3/4"	ALUMINUM	GLASS	ALUMINUM	BRUSHED	1	SEE NOTE 1
5	SW	5	80"	1 3/4"	ALUMINUM	GLASS	ALUMINUM	BRUSHED	1	SEE NOTE 1
6	SW	6	80"	1 3/4"	ALUMINUM	GLASS	ALUMINUM	BRUSHED	1	SEE NOTE 1
7	SW	7	80"	1 3/4"	ALUMINUM	GLASS	ALUMINUM	BRUSHED	1	SEE NOTE 1
8	SW	8	80"	1 3/4"	ALUMINUM	GLASS	ALUMINUM	BRUSHED	1	SEE NOTE 1
9	SW	9	80"	1 3/4"	ALUMINUM	GLASS	ALUMINUM	BRUSHED	1	SEE NOTE 1
10	SW	10	80"	1 3/4"	ALUMINUM	GLASS	ALUMINUM	BRUSHED	1	SEE NOTE 1
11	SW	11	80"	1 3/4"	ALUMINUM	GLASS	ALUMINUM	BRUSHED	1	SEE NOTE 1
12	SW	12	80"	1 3/4"	ALUMINUM	GLASS	ALUMINUM	BRUSHED	1	SEE NOTE 1
13	SW	13	80"	1 3/4"	ALUMINUM	GLASS	ALUMINUM	BRUSHED	1	SEE NOTE 1
14	SW	14	80"	1 3/4"	ALUMINUM	GLASS	ALUMINUM	BRUSHED	1	SEE NOTE 1
15	SW	15	80"	1 3/4"	ALUMINUM	GLASS	ALUMINUM	BRUSHED	1	SEE NOTE 1

NOTES

1. ALL NEW DOORS TO BE HONOLULU BIRCH VENEER SOLID CORE WITH CLEAR FINISH.
 2. ALL EXISTING FRAMES TO BE REPAINTED.
 3. ALL DOOR HARDWARE TO BE FALCON (REMOVABLE CORE) W/ SERIES W/ DANE LEVER IN US30 SATIN CHROME FINISH.
 4. WALL STOPS AWAYGOOY AND SILENCER #394 BY VES.
 5. STOREROOM TO BE CLEAR ANOD ALUMINUM HARBOR STEEL LEVERSET BY ADAM-SKATE, CLOSER BY ICH 400.
 6. ALL NEW DOORS TO BE HONOLULU BIRCH VENEER SOLID CORE WITH CLEAR FINISH.
 7. ALL EXISTING FRAMES TO BE REPAINTED.
 8. ALL DOOR HARDWARE TO BE FALCON (REMOVABLE CORE) W/ SERIES W/ DANE LEVER IN US30 SATIN CHROME FINISH.
 9. WALL STOPS AWAYGOOY AND SILENCER #394 BY VES.
 10. STOREROOM TO BE CLEAR ANOD ALUMINUM HARBOR STEEL LEVERSET BY ADAM-SKATE, CLOSER BY ICH 400.
 11. ALL NEW DOORS TO BE HONOLULU BIRCH VENEER SOLID CORE WITH CLEAR FINISH.
 12. ALL EXISTING FRAMES TO BE REPAINTED.
 13. ALL DOOR HARDWARE TO BE FALCON (REMOVABLE CORE) W/ SERIES W/ DANE LEVER IN US30 SATIN CHROME FINISH.
 14. WALL STOPS AWAYGOOY AND SILENCER #394 BY VES.
 15. STOREROOM TO BE CLEAR ANOD ALUMINUM HARBOR STEEL LEVERSET BY ADAM-SKATE, CLOSER BY ICH 400.



McCormack Van Voorhis LLP
 ARCHITECTURE
 1000 WEST 10TH AVENUE
 SUITE 1000
 DENVER, CO 80202
 TEL: 303.733.1100
 FAX: 303.733.1101
 WWW.MCCORMACKVANVOORHIS.COM

PROJECT:
 OFFICE CONVERSION OF SUITES & PUTTING
 FLOORPLAN
 FLOOR PLAN

DATE:
 10/20/20

REVISIONS:

NO.	REVISIONS SUBMITTED	DATE

A-1 FLOOR PLAN

A102