

207 WEST CENTRAL AVENUE MAYWOOD, NJ



Building A



Building B



Total Land Acreage: 1.22 acres

BUILDING

A
SPECS

Building Type:	Retail Auto Repair
Building Size:	6,400 SF
Parking:	3.33/1,000 SF
Ceiling Height:	13' 7" Clear
Zoning:	Limited Light Industrial
Lease/Sale Rate:	Call for Pricing

BUILDING

B
SPECS

Building Type:	Flex Showroom
Building Size:	2,700 SF
Parking:	10.00/1,000 SF
Ceiling Height:	N/A
Zoning:	Limited Light Industrial
Lease/Sale Rate:	Call for Pricing



AUTO REPAIR GARAGE



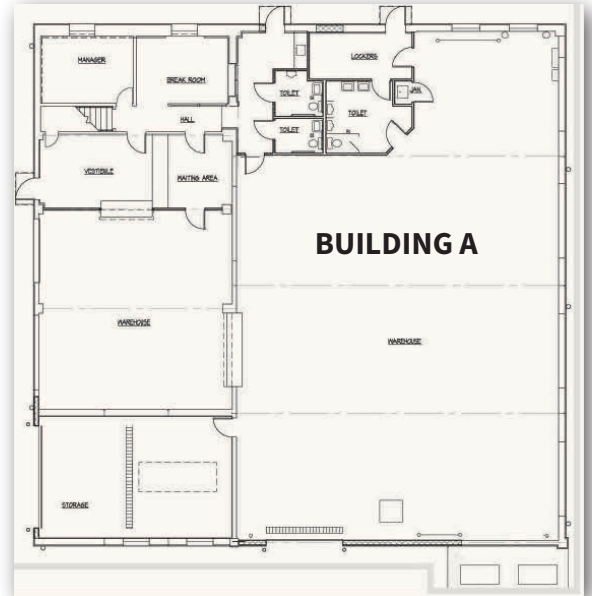
AERIAL VIEW



OUTSIDE CONNECTING LOT



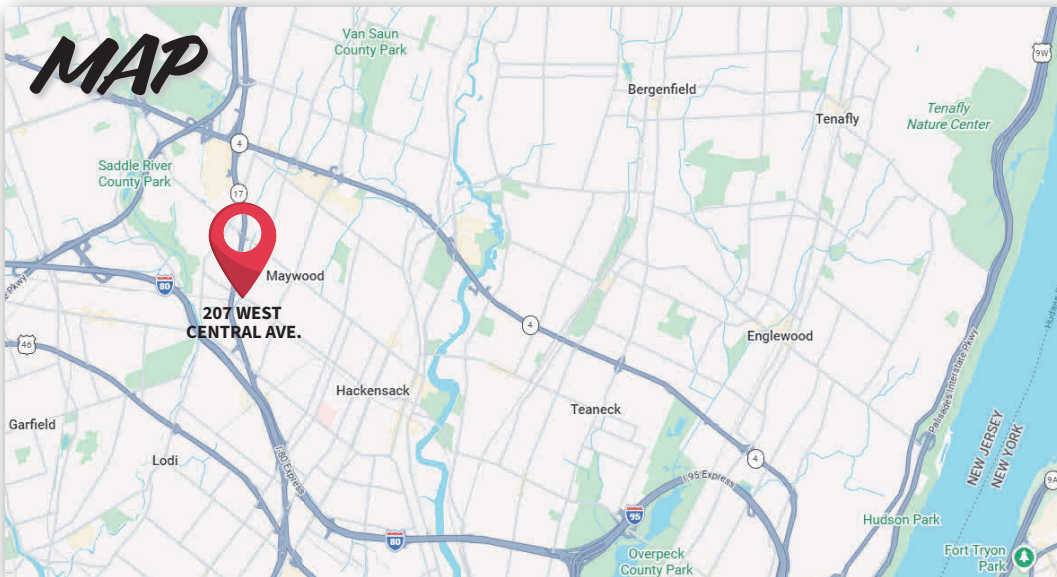
EV CHARGING STATION



BUILDING A

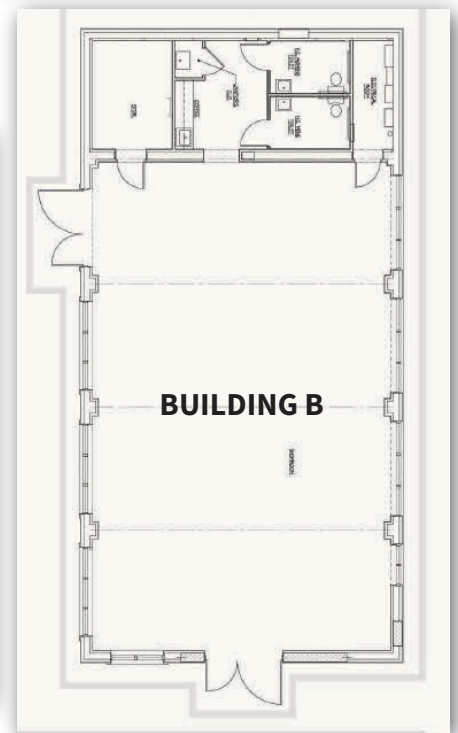


SHOWROOM



MAP


207 WEST CENTRAL AVE.



BUILDING B

For more information, please contact our office at 973-299-0900 or:

 Dan Whitehead | VP
dwhitehead@resource-realty.com

 C: 973-769-0925



All information furnished is from sources deemed reliable. No representation is made as to the accuracy thereof and it is submitted subject to error, omission, change of price, prior sale or lease and withdrawal without notice. Any commission due cooperating brokers is subject to all of the terms and conditions upon which we and our clients have agreed.