

# ***For Lease***

Wellness Center at Eaton DC | 1201 K St NW | Washington, DC 20005





# Wellness Center at Eaton DC

1201 K Street NW | Washington, DC 20005

Renowned for its thoughtful hospitality, curated cultural programming, and integrated wellness experiences, The Eaton attracts a dynamic mix of travelers, creatives, and professionals.

Positioned in the heart of Downtown, this turnkey wellness and spa space allows operators to seamlessly step into an established destination and align with a brand synonymous with innovation, community, and modern well-being.

## NEARBY RETAILERS

**WILD DAYS**

ALLEGORY

**PAUL**  
FRENCH BAKERY & CAFÉ

## ABOUT THE PROPERTY



3,140 SF

Total Available Space



209

Total Keys

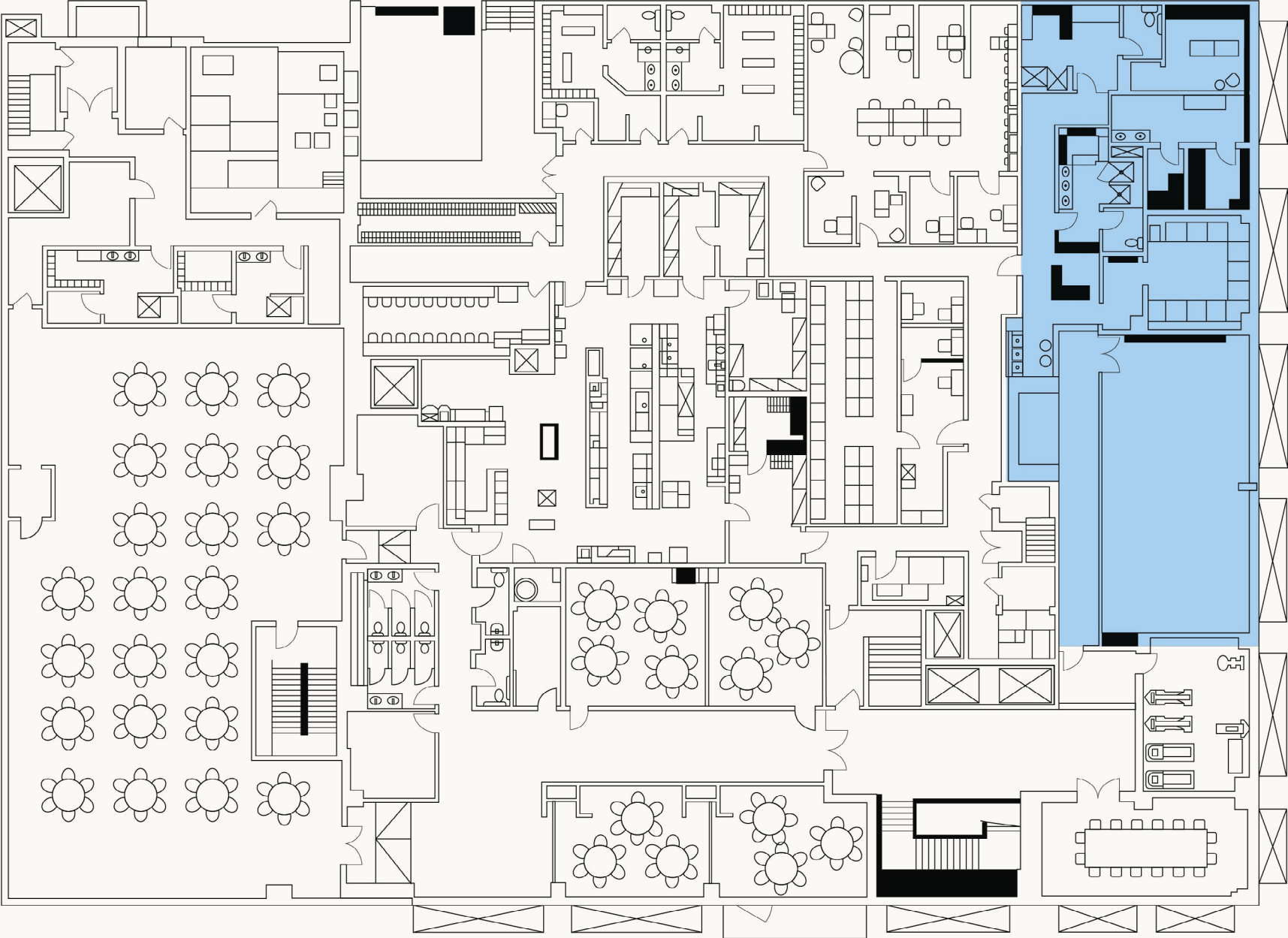


3

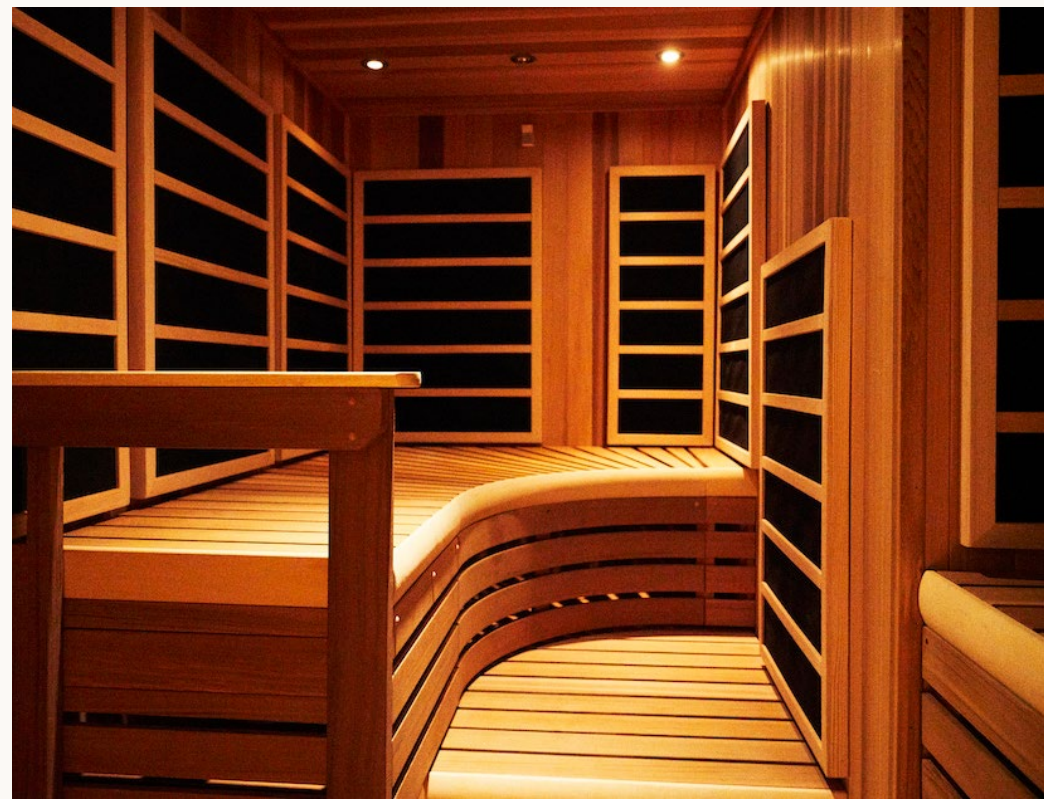
Floors Dedicated  
Office/Co-working Space

# Site Plan

Eaton DC | 1201 K Street NW | Washington, DC 20005



**3,140 SF Available**





# Highlights

Eaton DC | 1201 K Street NW | Washington, DC 20005

## City Center DC

10 acre mixed-use development in downtown Washington DC with 221,000 SF of retail space and 520,000 SF of office space

## McPherson Square

Approx. 7,000 daily riders, with weekend traffic exceeding pre-pandemic numbers

## Franklin Park

Downtown DC's largest green space totaling 4.79 acres, operated and programmed by the Downtown BID

## Walter E. Washington Convention Center

2.3 million SF center with 703,000 SF of exhibit space and 52,000 SF of ballroom space

## Daytime Population

291,857 daytime population in Downtown DC



Capital One Arena, Washington, DC

## WALKING DISTANCE | POINTS OF INTEREST

McPherson Square Station



6 MIN

City Center DC



6 MIN

Convention Center



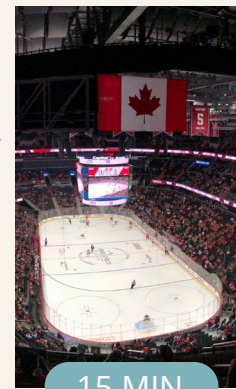
8 MIN

White House



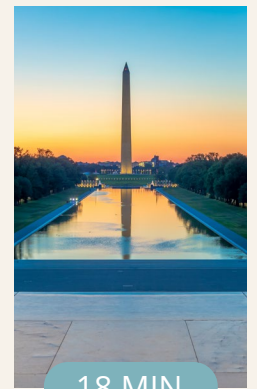
15 MIN

Capital One Arena



15 MIN

National Mall



18 MIN

# Neighborhood Retailers

Eaton DC | 1201 K Street NW | Washington, DC 20005





# Demographics

Eaton DC | 1201 K Street NW | Washington, DC 20005

## 0.25 MILE

5,740

2025 Estimated  
Population

3,829

2025 Estimated  
Households

35,589

Total Daytime  
Population

\$171,074

Average Household  
Income

## 0.5 MILE

18,204

2025 Estimated  
Population

11,345

2025 Estimated  
Households

116,109

Total Daytime  
Population

\$170,006

Average Household  
Income

## 1 MILE

62,495

2025 Estimated  
Population

36,937

2025 Estimated  
Households

334,607

Total Daytime  
Population

\$184,290

Average Household  
Income

**Want more?** Contact us for a complete demographic, foot-traffic, and mobile data insights report.

SOURCE  **esri**



**OF GOING THE EXTRA MILE**

SRS Real Estate Partners  
1250 Connecticut Avenue NW, Suite 700  
Washington, D.C. 20036  
202.925.4205

**ARRIS NOBLE**

202.503.2195  
arris.noble@srsre.com

**RACHEL CALLENDER**

202.503.3540  
rachel.callender@srsre.com

**SRSRE.COM**

©2026 SRS. All Rights Reserved.

The information presented was obtained from sources deemed reliable; however SRS does not guarantee its completeness or accuracy.

