



## PRICE ADJUSTMENT

**10,580 SF** AVAILABLE FOR LEASE

ASSEMBLY, LIGHT MANUFACTURING, DISTRIBUTION OR SERVICE CENTER | AVAILABLE NOW

**10635 VANOWEN STREET**

Burbank, CA | San Fernando Valley

## FEATURES

- ±10,580 SF industrial building
- ±16' minimum clear height
- 2 ground level doors
- ~~\$1.85/SF MG~~ to **\$1.69/SF MG**
- CAM: \$0.09/SF
- Available Now
- Premiere East Valley location
- Convenient access to SR-170 and I-5 freeways
- 2 panels servicing the unit. (1) 600A - 240V and (2) 400A - 120/240V
- Perfect for assembly, light manufacturing, distribution or service center

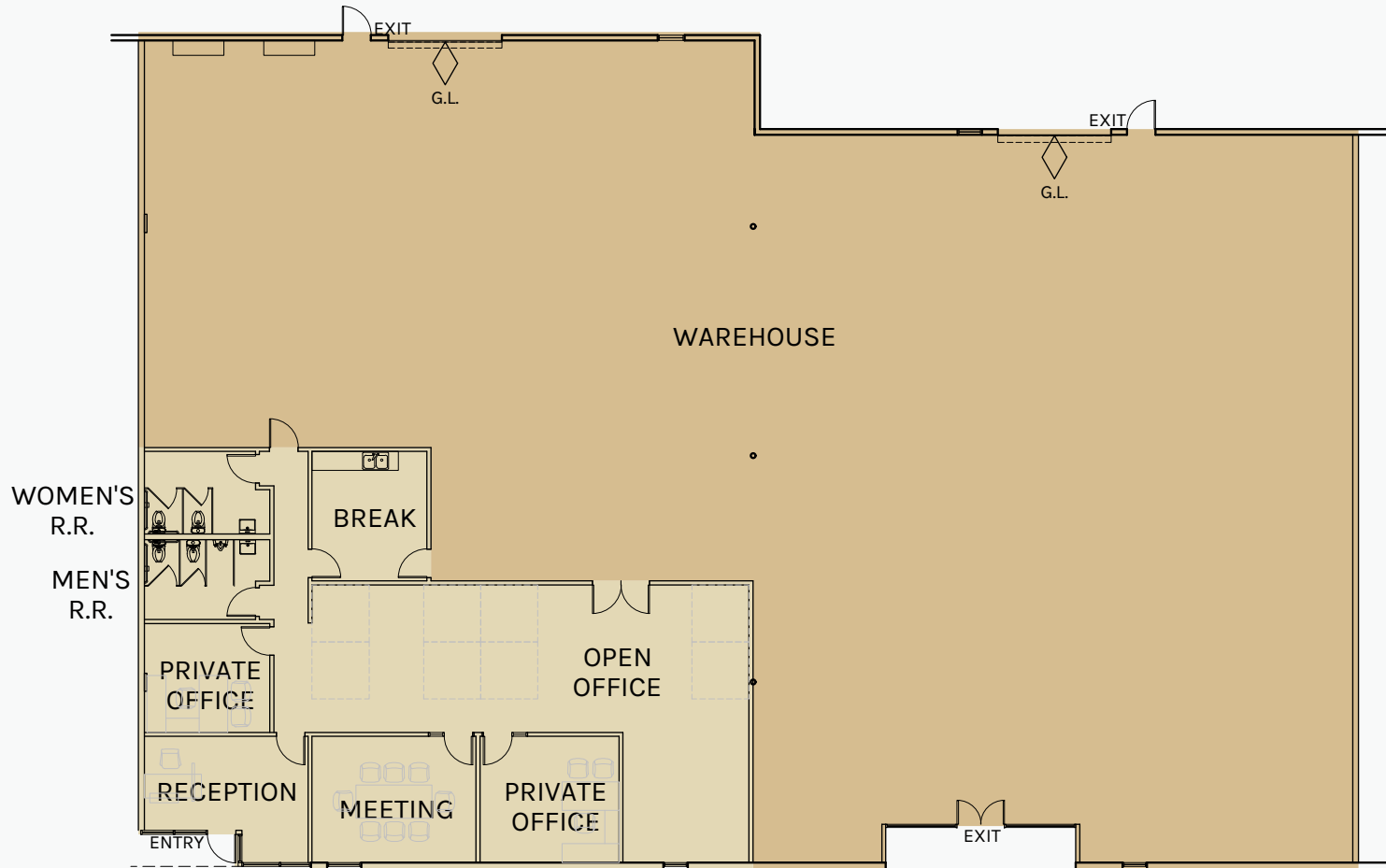


# FLOOR PLAN

**8,255 SF**  
WAREHOUSE

**2,325 SF**  
OFFICE

PLAN LAYOUT IS SUBJECT TO FIELD CONDITIONS AND MAY DIFFER FROM THE PLAN AS SHOWN. ALL INFORMATION PRESENTED IN THIS DRAWING IS PRESUMED TO BE ACCURATE; HOWEVER, TENANT SHOULD VERIFY PERTINENT INFORMATION PRIOR TO COMMITTING TO A LEASE. ANY FURNITURE OR APPLIANCES SHOWN ON THE PLAN ARE FOR CONCEPT ONLY AND WILL BE PROVIDED BY TENANT.



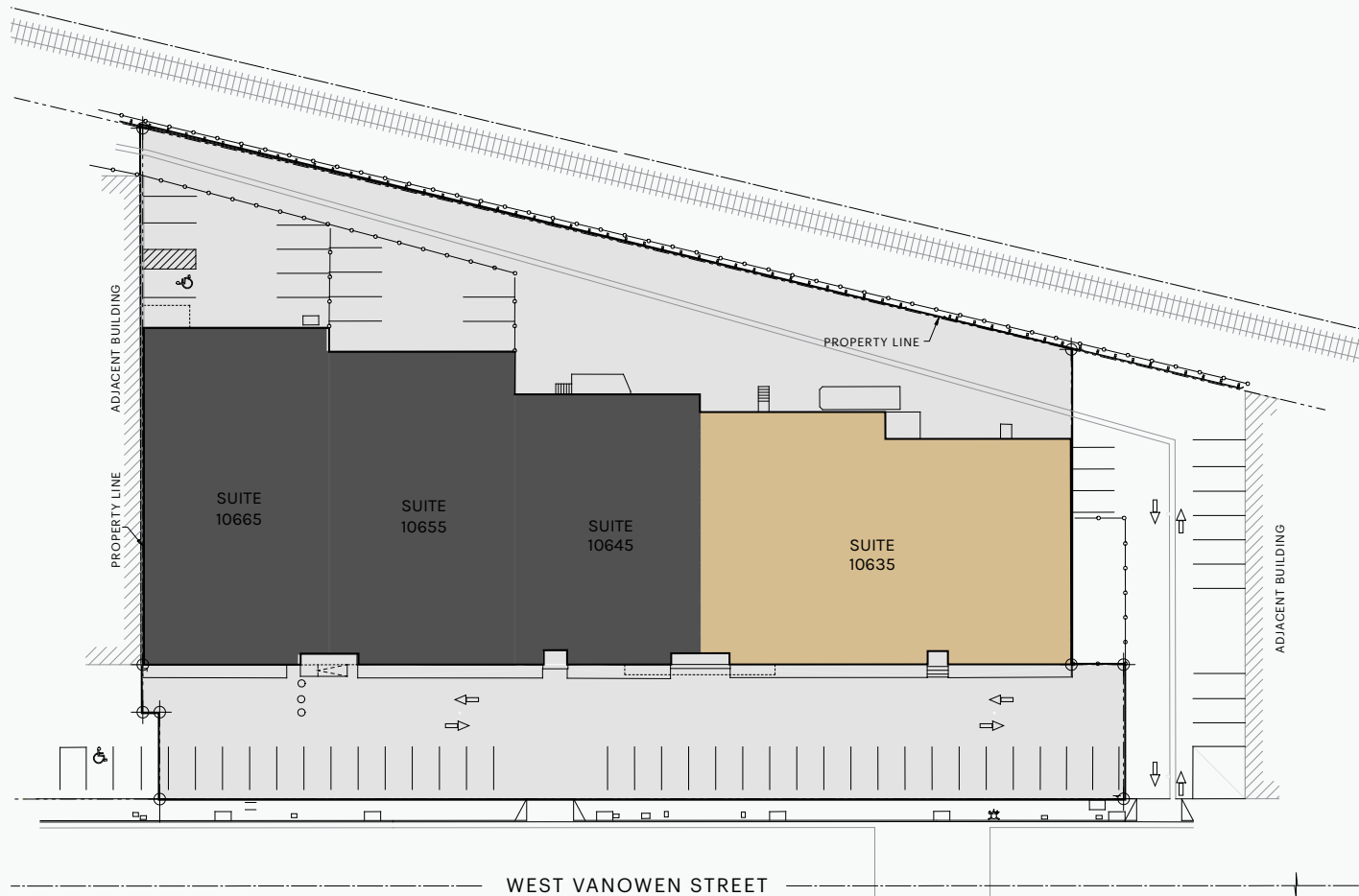
10635 Vanowen Street



# SITE PLAN

**10,580 SF**  
BUILDING

PLAN LAYOUT IS SUBJECT TO FIELD CONDITIONS AND MAY DIFFER FROM THE PLAN AS SHOWN. ALL INFORMATION PRESENTED IN THIS DRAWING IS PRESUMED TO BE ACCURATE; HOWEVER, TENANT SHOULD VERIFY PERTINENT INFORMATION PRIOR TO COMMITTING TO A LEASE. ANY FURNITURE OR APPLIANCES SHOWN ON THE PLAN ARE FOR CONCEPT ONLY AND WILL BE PROVIDED BY TENANT.



**10635 Vanowen Street**

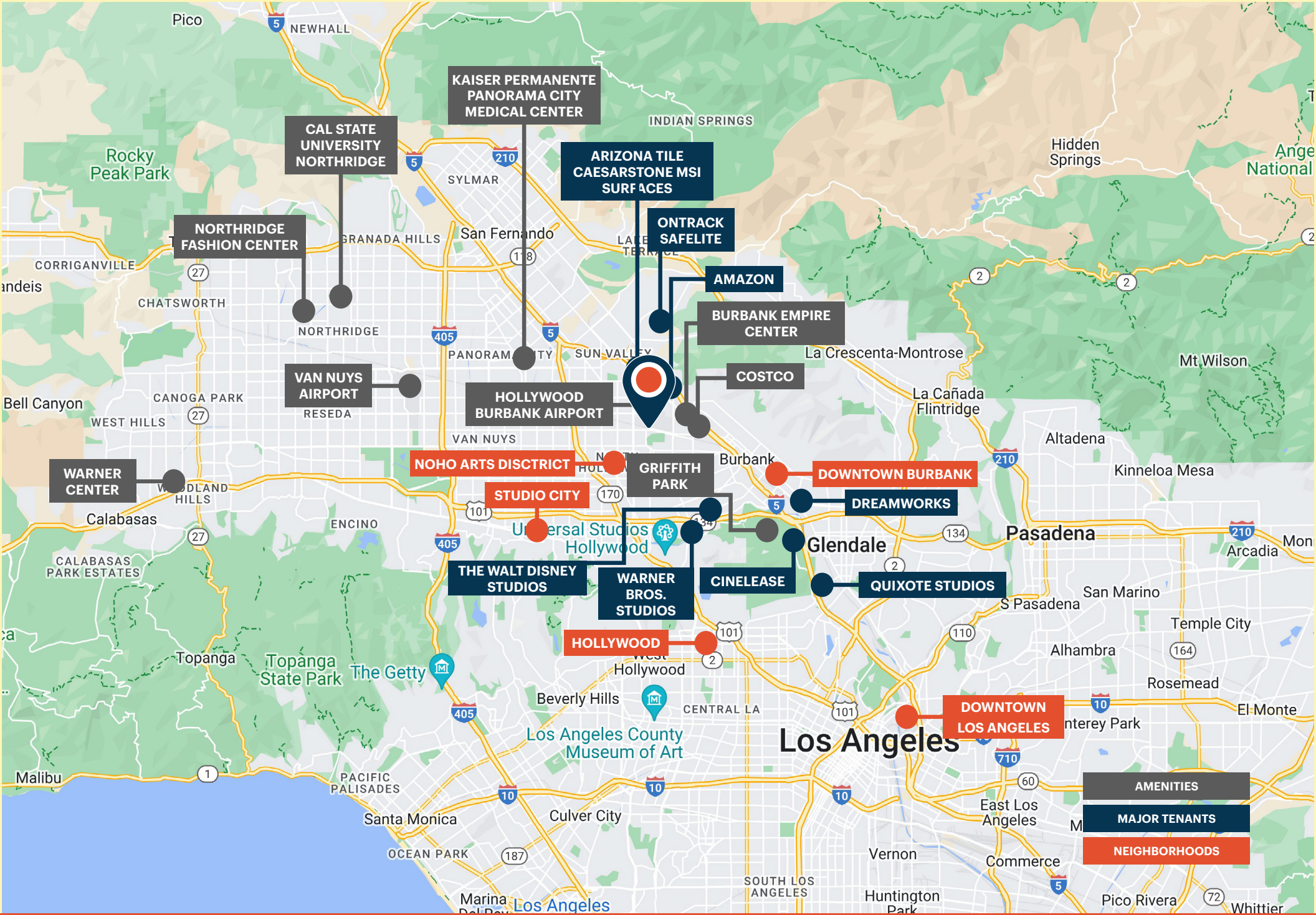


# PHOTOS



# PHOTOS





10635 Vanowen Street





**Rexford  
Industrial**

## Leasing Contacts



**RON FEDER**  
Senior Managing Director  
O: 818.222.0404  
[rfeder@rjfeder.com](mailto:rfeder@rjfeder.com)  
DRE# 00983855



**BROOKE FEDER-KENRICK**  
Commercial Associate  
C: 818.451.3636  
[bkenrick@rjfeder.com](mailto:bkenrick@rjfeder.com)  
DRE# 02199320



**PEAK COMMERCIAL**  
[www.peakcommercial.com](http://www.peakcommercial.com)