

# 225 Broadway

## The Transportation Building

The very attractive building at 225 Broadway boasts a Renaissance Revival design, and where it is located is just as appealing. It sits adjacent to the Fulton Street Hub, is near City Hall and courts, and is located in a very popular and high-traffic area, perfect for any New York native. Enjoy nice views of City Hall and the Brooklyn Bridge as well as over the whole oculus. While it's chock full of old school charm, the building is equipped with a destination dispatch elevator allowing for a touchless and more efficient transportation experience.



### Leasing Agent

Mendy Braun  
212-349-2154  
Mbraun@braunmgmt.com

### OWNER

**Bowling Green Assocs., L.P.**

### MANAGING AGENT

**KF Braun Management LLC**

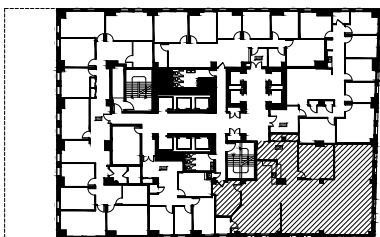
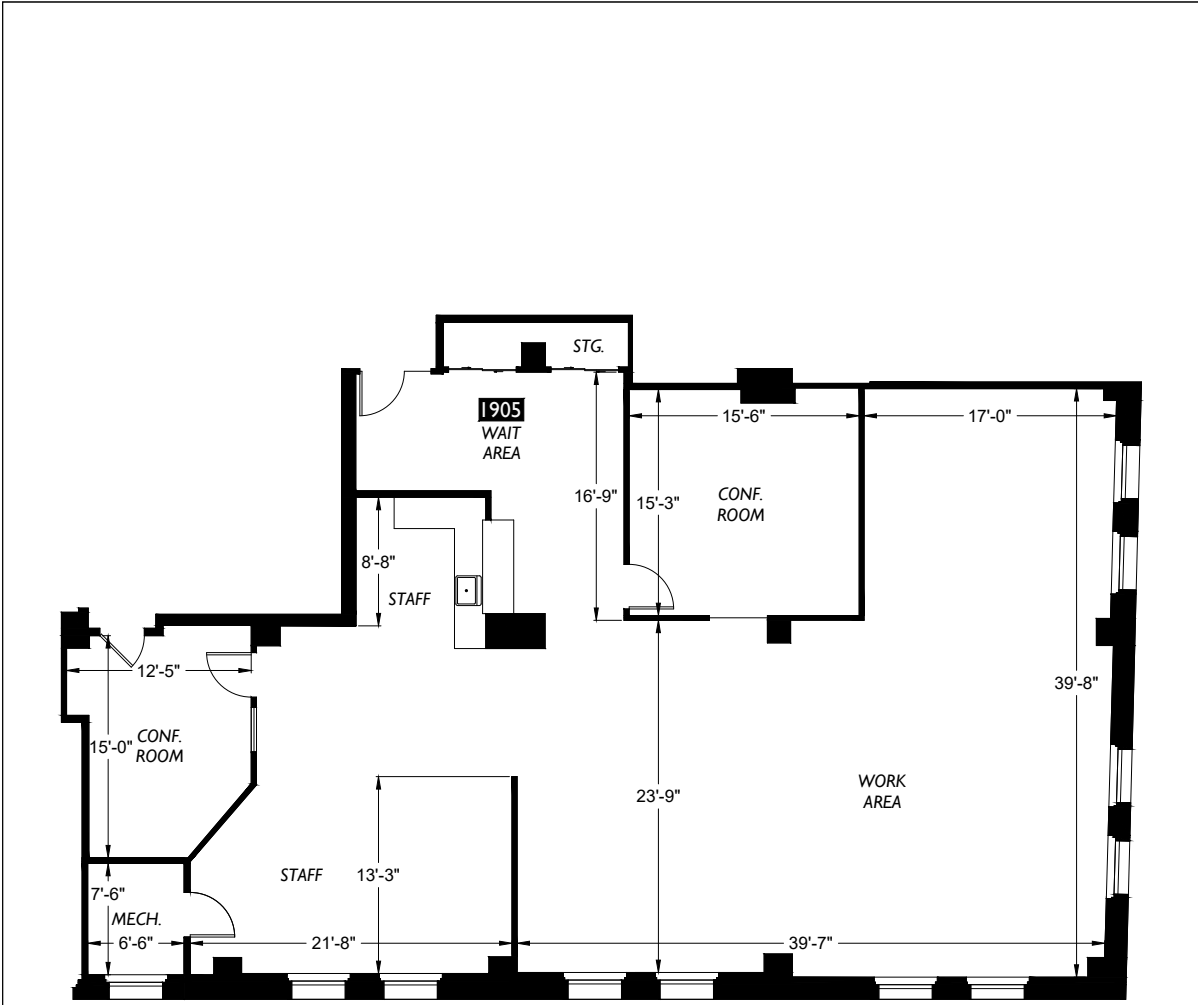
### LOBBY DESK



**212-227-8638**

## 19 Floor - Suite 1905 225 BROADWAY

Suite	Sq. Ft.	Monthly Rent	Monthly Electricity	Electricity	Rent per Sq. Ft.
1905	3,510	\$13,163		3.50	\$45

ESCALATION: 3% Per Annum In Lieu of Operating Expense. R.E. Tax Pass Along



 <p><b>2DFLOORPLANS.COM</b> 206-328-7410</p> <p>600 NW Gilman Blvd. Suite E Issaquah, WA 98027</p>	<p><b>225 BROADWAY SUITE 1905 NEW YORK, N.Y.</b></p>	 <p>Mendy Braun mendy@braunre.com www.braunre.com</p> <p>160 Broadway 1<sup>st</sup> Floor New York, NY 10038 212.349.2154 P 212.202.6418 F</p>
---	--	--