

FOR LEASE BRENTWOOD SQUARE

OFFICE & MEDICAL SPACE
AVAILABLE IN THE HEART OF
BRENTWOOD

11661 SAN VICENTE BLVD
LOS ANGELES, CA 90049



ERIC SACKLER | CALDRE #01057377

📍 11661 SAN VICENTE BLVD., 10TH FL STE 1001, LA, CA 90049

📞 310.979.4990 ✉ ERICSACKLER@GMAIL.COM

SUSAN LAU | CALDRE #01516710

📍 11661 SAN VICENTE BLVD., 10TH FL STE 1001, LA, CA 90049

📞 213.220.5466 ✉ SUSANLAU@GMAIL.COM



CITY NATIONAL BANK

us bank

11661 SAN VICENTE BLVD

BALTAIRE RESTAURANT
Orangetheory FITNESS
Coral Tree Café

BANC OF CALIFORNIA

TOSCANA

Bank of America

WHOLE FOODS MARKET

Starbucks

Mendocino Farms

勝 KATSUYA

SAN VICENTE BLVD

a.o.c.

JON & VINNY'S ITALIAN

Blue Bona Coffee Beans & Tea Treat

WINSTON BARNEY'S GOURMET HAMBURGERS

SUGARFISH BY SUSHI NOZAWA
SALT & STRAW
bluemercury
SOULCYCLE

citi

JUICE CRAFTERS rejuvenate your life

S BARRINGTON AVE

MONTANA AVE

burgerlounge THE ORIGINAL grass-fed BURGER

CHIN CHIN

FRONT RUNNERS

WELLS FARGO

PLANTA
FIRST REPUBLIC It's a privilege to serve you.

WILSHIRE BLVD



ERIC SACKLER | CALDRE #01057377
📞 310 979 4990 ✉ ERICSACKLER@GMAIL.COM

SUSAN LAU | CALDRE #01516710
📞 213.220.5466 ✉ SUSANLAU@GMAIL.COM

The property information herein is derived from various sources that may include, but not be limited to, county records and the Multiple Listing Service, and it may include approximations. Although the information is believed to be accurate, it is not warranted and you should not rely upon it without personal verification. Real estate agents affiliated with Coldwell Banker Realty are independent contractor sales associates, not employees. ©2021 Coldwell Banker. All Rights Reserved. Coldwell Banker and the Coldwell Banker logos are trademarks of Coldwell Banker Real Estate LLC. The Coldwell Banker® System is comprised of company owned offices which are owned by a subsidiary of Realty Brokerage Group LLC and franchised offices which are independently owned and operated. The Coldwell Banker System fully supports the principles of the Fair Housing Act and the Equal Opportunity Act.

11661 SAN VICENTE BOULEVARD SUITE AVAILABILITY

SUITE	VIEW	RSF	RATE	NOTES
104	Ground Floor	1,686	Negotiable/FSG	Medical
204	NW	656	Negotiable/FSG	
220	NE	1,635	Negotiable/FSG	
303	S	1,329	Negotiable/FSG	
305	SE	1,245	Negotiable/FSG	
404	W	1,792	Negotiable/FSG	
500	SW	1,648	Negotiable/FSG	
711	SE	1,909	Negotiable/FSG	
907	SW	2,480	Negotiable/FSG	

BUILDING FEATURES

- Café
- Convenience store
- 24-hour security
- View suites
- Retail tenants include US Bank, Baltaire Restaurant & Orangetheory
- Building has earned ENERGY STAR® certification from the EPA.

LOCATION FEATURES

- 1/2 block from Barrington Avenue
- Near Brentwood's most popular shops & restaurants
- Convenient access to 405 freeway
- Easy access to many residential neighborhoods



ERIC SACKLER | CALDRE #01057377
 ☎ 310 979 4990 ✉ ERICSACKLER@GMAIL.COM

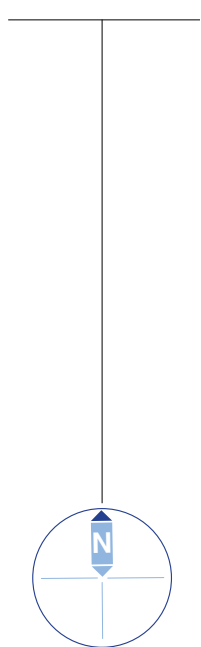
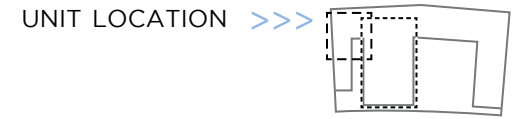
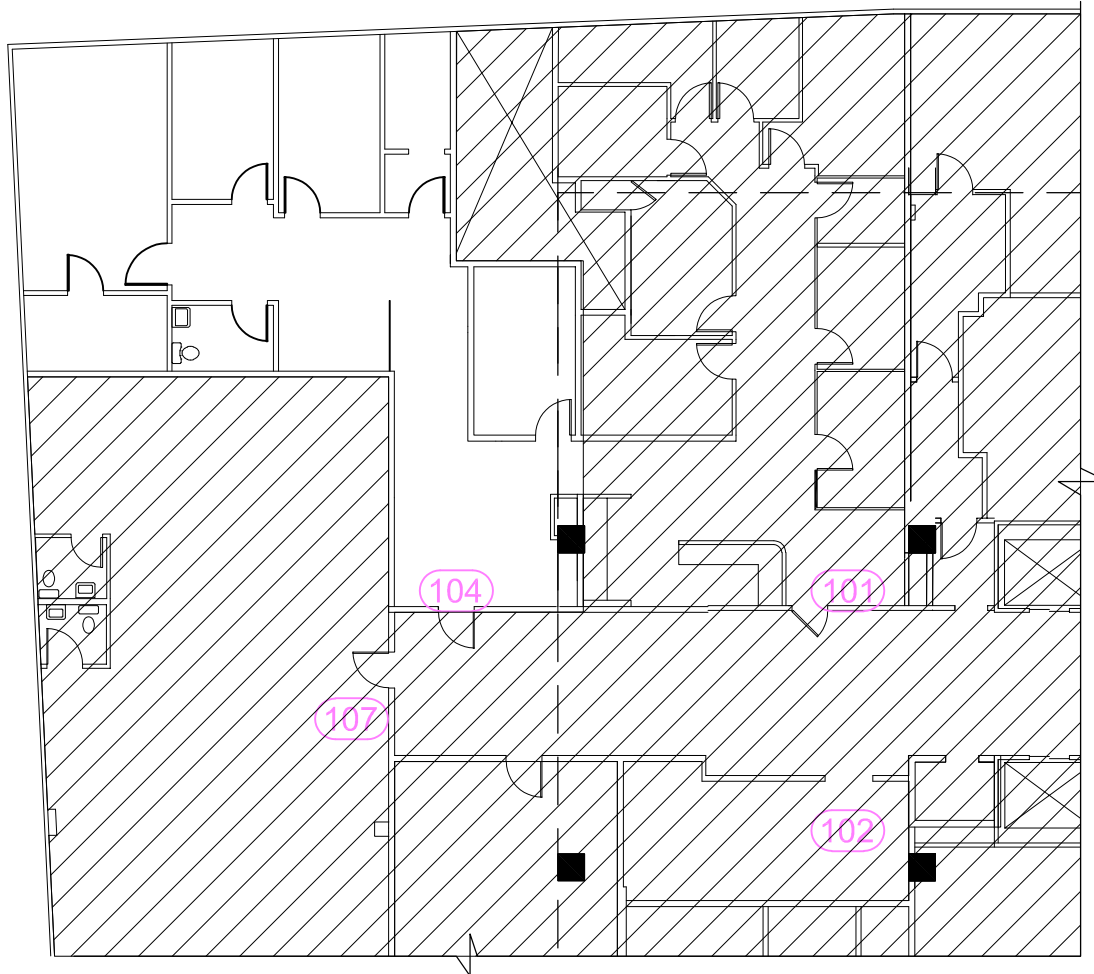
SUSAN LAU | CALDRE #01516710
 ☎ 213.220.5466 ✉ SUSANLAU@GMAIL.COM

The property information herein is derived from various sources that may include, but not be limited to, county records and the Multiple Listing Service, and it may include approximations. Although the information is believed to be accurate, it is not warranted and you should not rely upon it without personal verification. Real estate agents affiliated with Coldwell Banker Realty are independent contractor sales associates, not employees. ©2021 Coldwell Banker. All Rights Reserved. Coldwell Banker and the Coldwell Banker logos are trademarks of Coldwell Banker Real Estate LLC. The Coldwell Banker® System is comprised of company owned offices which are owned by a subsidiary of Realty Brokerage Group LLC and franchised offices which are independently owned and operated. The Coldwell Banker System fully supports the principles of the Fair Housing Act and the Equal Opportunity Act.

FLOOR PLAN 104: MEDICAL - DIVISIBLE

 11661 San Vicente Blvd - Suite 101 & 104

Negotiable /FSG	
TOTAL USABLE Sq Ft 1,429	TOTAL RENTABLE Sq Ft 1,686



*FLOOR PLAN CAN BE MODIFIED



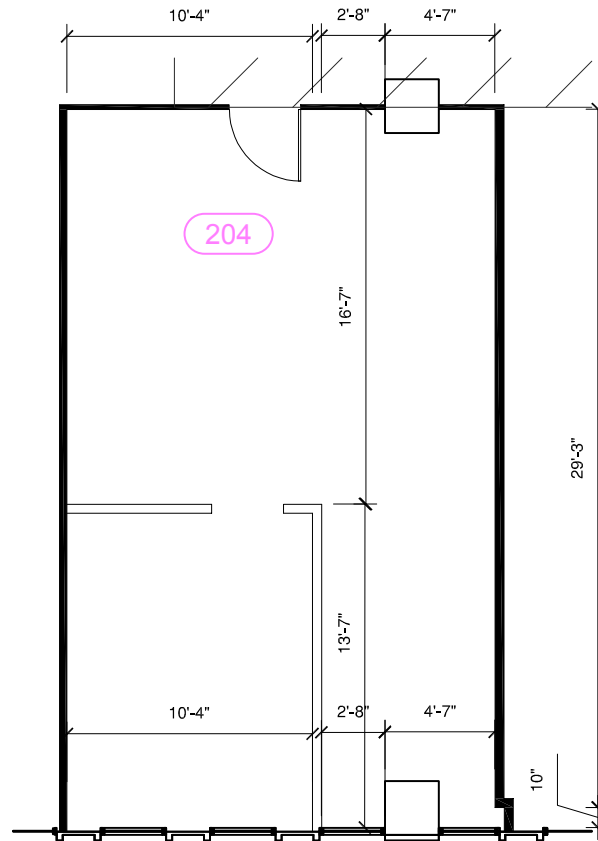
ERIC SACKLER | CALDRE #01057377
 310 979 4990  ERICSACKLER@GMAIL.COM

SUSAN LAU | CALDRE #01516710
 213.220.5466  SUSANLAU@GMAIL.COM

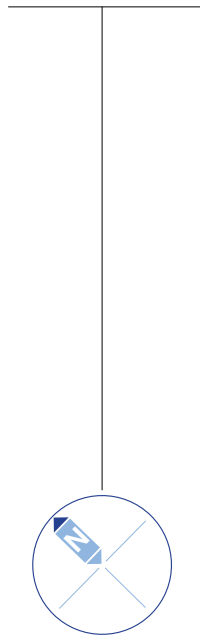
The property information herein is derived from various sources that may include, but not be limited to, county records and the Multiple Listing Service, and it may include approximations. Although the information is believed to be accurate, it is not warranted and you should not rely upon it without personal verification. Real estate agents affiliated with Coldwell Banker Realty are independent contractor sales associates, not employees. ©2021 Coldwell Banker. All Rights Reserved. Coldwell Banker and the Coldwell Banker logos are trademarks of Coldwell Banker Real Estate LLC. The Coldwell Banker® System is comprised of company owned offices which are owned by a subsidiary of Realty Brokerage Group LLC and franchised offices which are independently owned and operated. The Coldwell Banker System fully supports the principles of the Fair Housing Act and the Equal Opportunity Act.

FLOOR PLAN 204:

Negotiable /FSG	
TOTAL USABLE Sq Ft 556	TOTAL RENTABLE Sq Ft 656



UNIT LOCATION >>>



*FLOOR PLAN CAN BE MODIFIED



ERIC SACKLER | CALDRE #01057377
 ☎ 310 979 4990 ✉ ERICSACKLER@GMAIL.COM

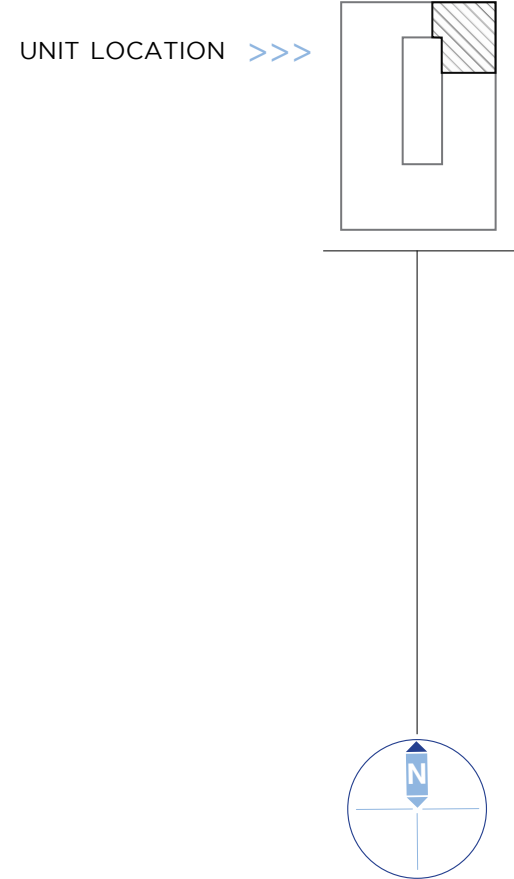
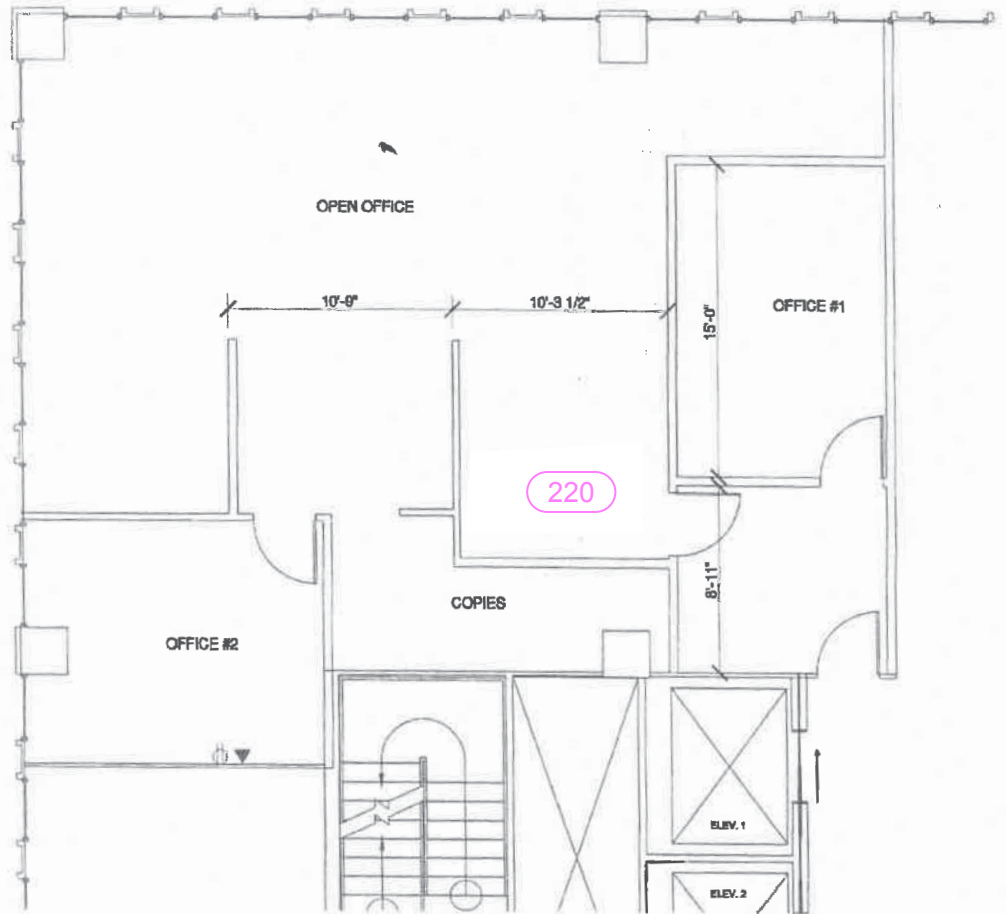
SUSAN LAU | CALDRE #01516710
 ☎ 213.220.5466 ✉ SUSANLAU@GMAIL.COM

The property information herein is derived from various sources that may include, but not be limited to, county records and the Multiple Listing Service, and it may include approximations. Although the information is believed to be accurate, it is not warranted and you should not rely upon it without personal verification. Real estate agents affiliated with Coldwell Banker Realty are independent contractor sales associates, not employees. ©2021 Coldwell Banker. All Rights Reserved. Coldwell Banker and the Coldwell Banker logos are trademarks of Coldwell Banker Real Estate LLC. The Coldwell Banker® System is comprised of company owned offices which are owned by a subsidiary of Realty Brokerage Group LLC and franchised offices which are independently owned and operated. The Coldwell Banker System fully supports the principles of the Fair Housing Act and the Equal Opportunity Act.

FLOOR PLAN 220:



Negotiable / FSG	
TOTAL USABLE SQ FT	TOTAL RENTABLE SQ FT
1,386	1,635



*FLOOR PLAN CAN BE MODIFIED



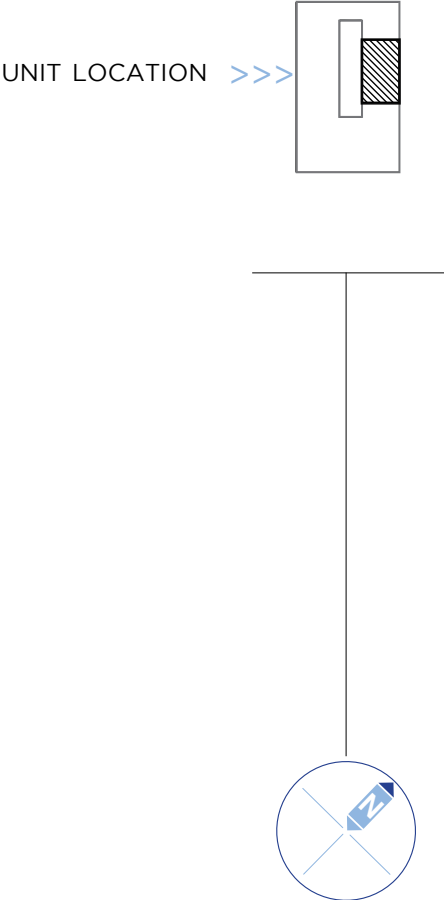
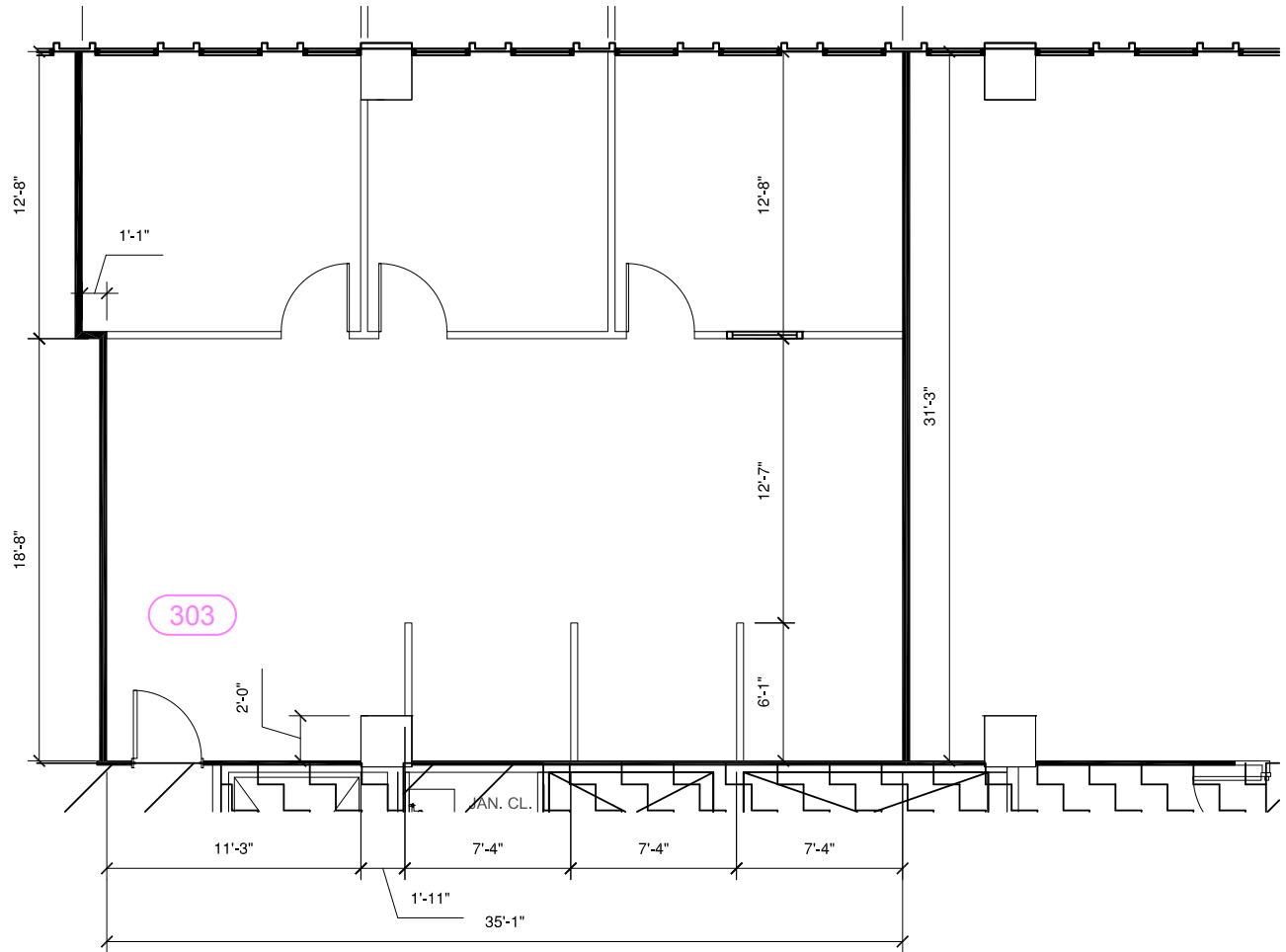
ERIC SACKLER | CALDRE #01057377
 ☎ 310 979 4990 ✉ ERICSACKLER@GMAIL.COM

SUSAN LAU | CALDRE #01516710
 ☎ 213.220.5466 ✉ SUSANLAU@GMAIL.COM

The property information herein is derived from various sources that may include, but not be limited to, county records and the Multiple Listing Service, and it may include approximations. Although the information is believed to be accurate, it is not warranted and you should not rely upon it without personal verification. Real estate agents affiliated with Coldwell Banker Realty are independent contractor sales associates, not employees. ©2021 Coldwell Banker. All Rights Reserved. Coldwell Banker and the Coldwell Banker logos are trademarks of Coldwell Banker Real Estate LLC. The Coldwell Banker® System is comprised of company owned offices which are owned by a subsidiary of Realty Brokerage Group LLC and franchised offices which are independently owned and operated. The Coldwell Banker System fully supports the principles of the Fair Housing Act and the Equal Opportunity Act.

FLOOR PLAN 303:

Negotiable /FSG	
TOTAL USABLE Sq Ft	TOTAL RENTABLE Sq Ft
1,126	1,329



*FLOOR PLAN CAN BE MODIFIED



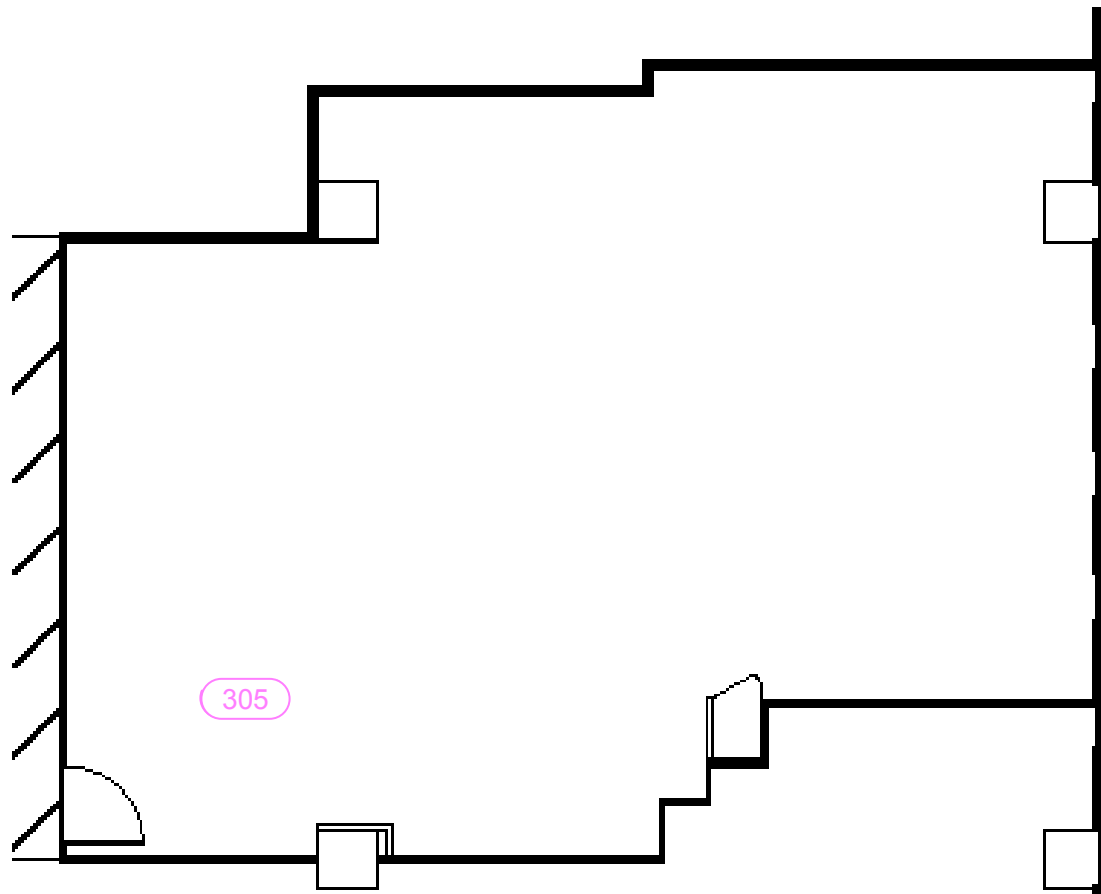
ERIC SACKLER | CALDRE #01057377
 ☎ 310 979 4990 ✉ ERICSACKLER@GMAIL.COM

SUSAN LAU | CALDRE #01516710
 ☎ 213.220.5466 ✉ SUSANLAU@GMAIL.COM

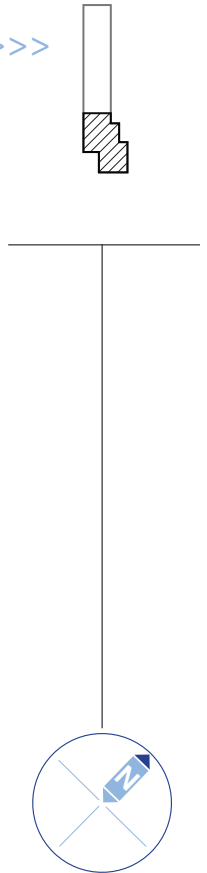
The property information herein is derived from various sources that may include, but not be limited to, county records and the Multiple Listing Service, and it may include approximations. Although the information is believed to be accurate, it is not warranted and you should not rely upon it without personal verification. Real estate agents affiliated with Coldwell Banker Realty are independent contractor sales associates, not employees. ©2021 Coldwell Banker. All Rights Reserved. Coldwell Banker and the Coldwell Banker logos are trademarks of Coldwell Banker Real Estate LLC. The Coldwell Banker® System is comprised of company owned offices which are owned by a subsidiary of Realty Brokerage Group LLC and franchised offices which are independently owned and operated. The Coldwell Banker System fully supports the principles of the Fair Housing Act and the Equal Opportunity Act.

FLOOR PLAN 305:

Negotiable /FSG	
TOTAL USABLE SQ FT	TOTAL RENTABLE SQ FT
1,055	1,245



UNIT LOCATION >>>



*FLOOR PLAN CAN BE MODIFIED



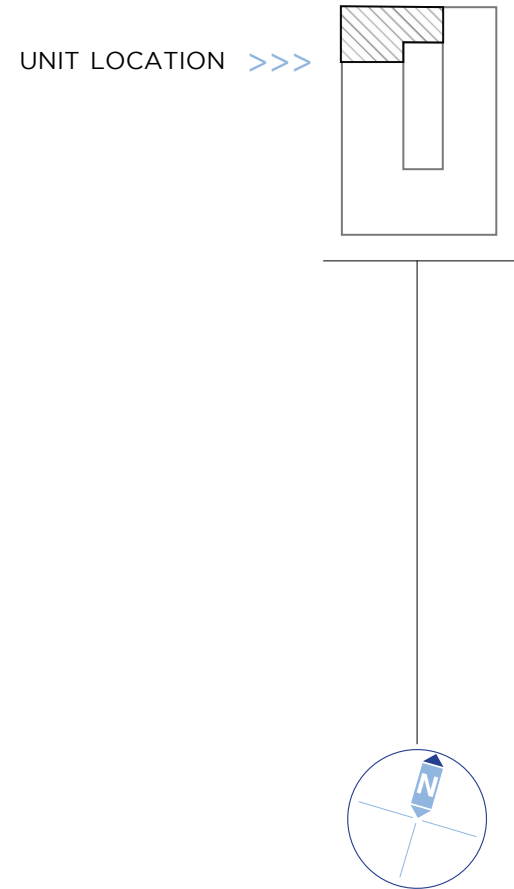
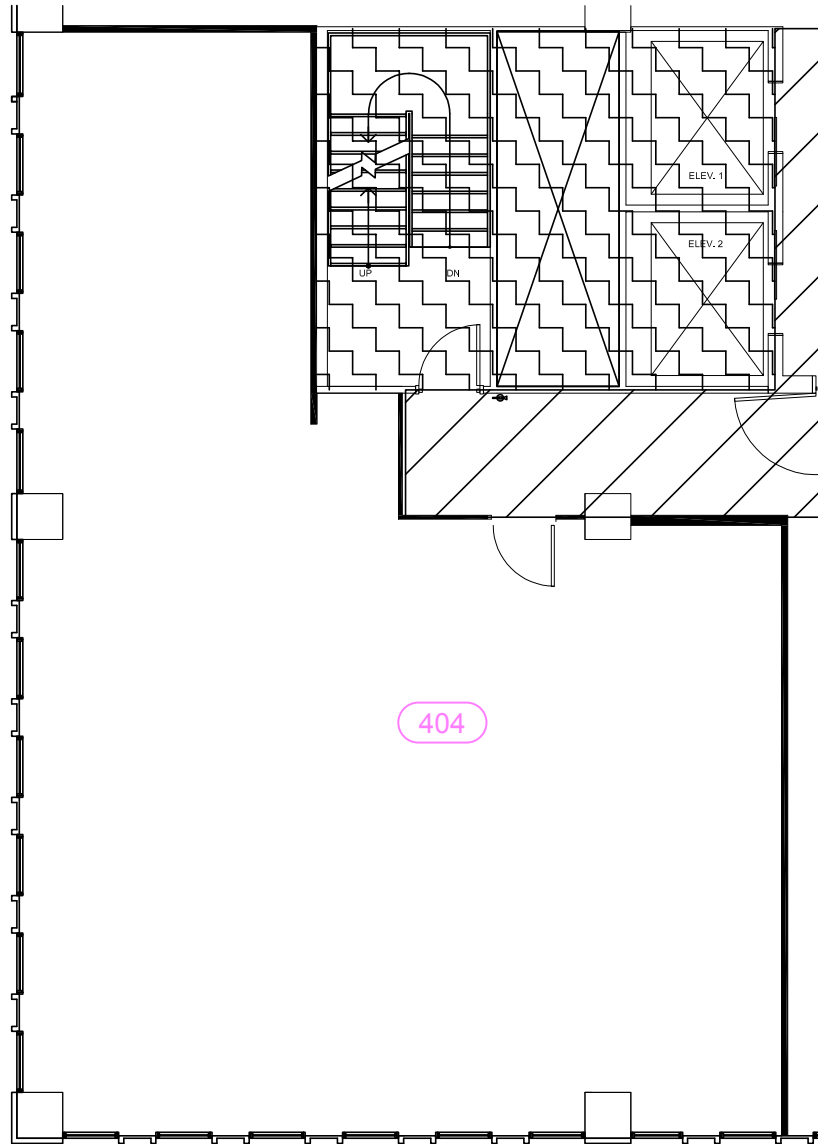
ERIC SACKLER | CALDRE #01057377
📞 310 979 4990 ✉ ERICSACKLER@GMAIL.COM

SUSAN LAU | CALDRE #01516710
📞 213.220.5466 ✉ SUSANLAU@GMAIL.COM

The property information herein is derived from various sources that may include, but not be limited to, county records and the Multiple Listing Service, and it may include approximations. Although the information is believed to be accurate, it is not warranted and you should not rely upon it without personal verification. Real estate agents affiliated with Coldwell Banker Realty are independent contractor sales associates, not employees. ©2021 Coldwell Banker. All Rights Reserved. Coldwell Banker and the Coldwell Banker logos are trademarks of Coldwell Banker Real Estate LLC. The Coldwell Banker® System is comprised of company owned offices which are owned by a subsidiary of Realty Brokerage Group LLC and franchised offices which are independently owned and operated. The Coldwell Banker System fully supports the principles of the Fair Housing Act and the Equal Opportunity Act.

FLOOR PLAN 404:

Negotiable /FSG	
TOTAL USABLE SQ FT 1,519	TOTAL RENTABLE SQ FT 1,792



*FLOOR PLAN CAN BE MODIFIED



ERIC SACKLER | CALDRE #01057377
 ☎ 310 979 4990 ✉ ERICSACKLER@GMAIL.COM

SUSAN LAU | CALDRE #01516710
 ☎ 213.220.5466 ✉ SUSANLAU@GMAIL.COM

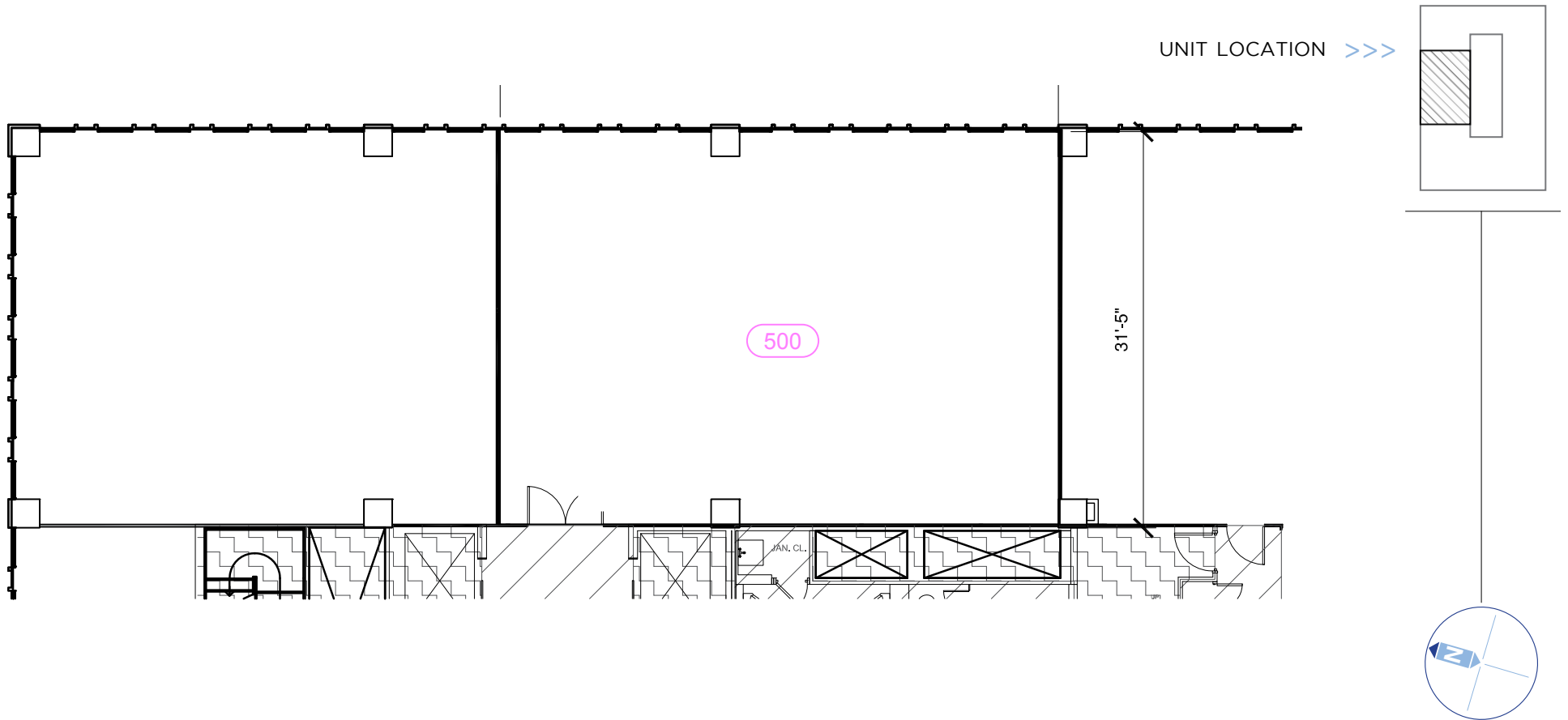
The property information herein is derived from various sources that may include, but not be limited to, county records and the Multiple Listing Service, and it may include approximations. Although the information is believed to be accurate, it is not warranted and you should not rely upon it without personal verification. Real estate agents affiliated with Coldwell Banker Realty are independent contractor sales associates, not employees. ©2021 Coldwell Banker. All Rights Reserved. Coldwell Banker and the Coldwell Banker logos are trademarks of Coldwell Banker Real Estate LLC. The Coldwell Banker® System is comprised of company owned offices which are owned by a subsidiary of Realty Brokerage Group LLC and franchised offices which are independently owned and operated. The Coldwell Banker System fully supports the principles of the Fair Housing Act and the Equal Opportunity Act.

FLOOR PLAN 500:

Negotiable /FSG

TOTAL USABLE
Sq Ft
1,397

TOTAL RENTABLE
Sq Ft
1,648



*FLOOR PLAN CAN BE MODIFIED



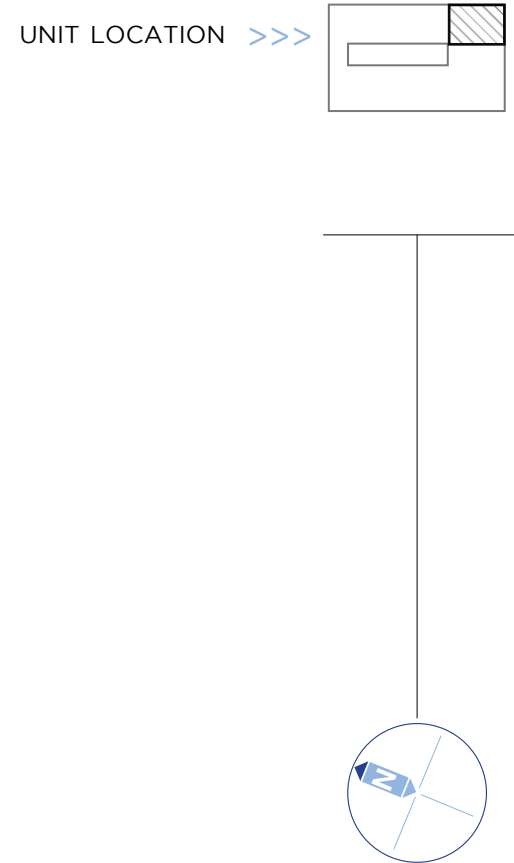
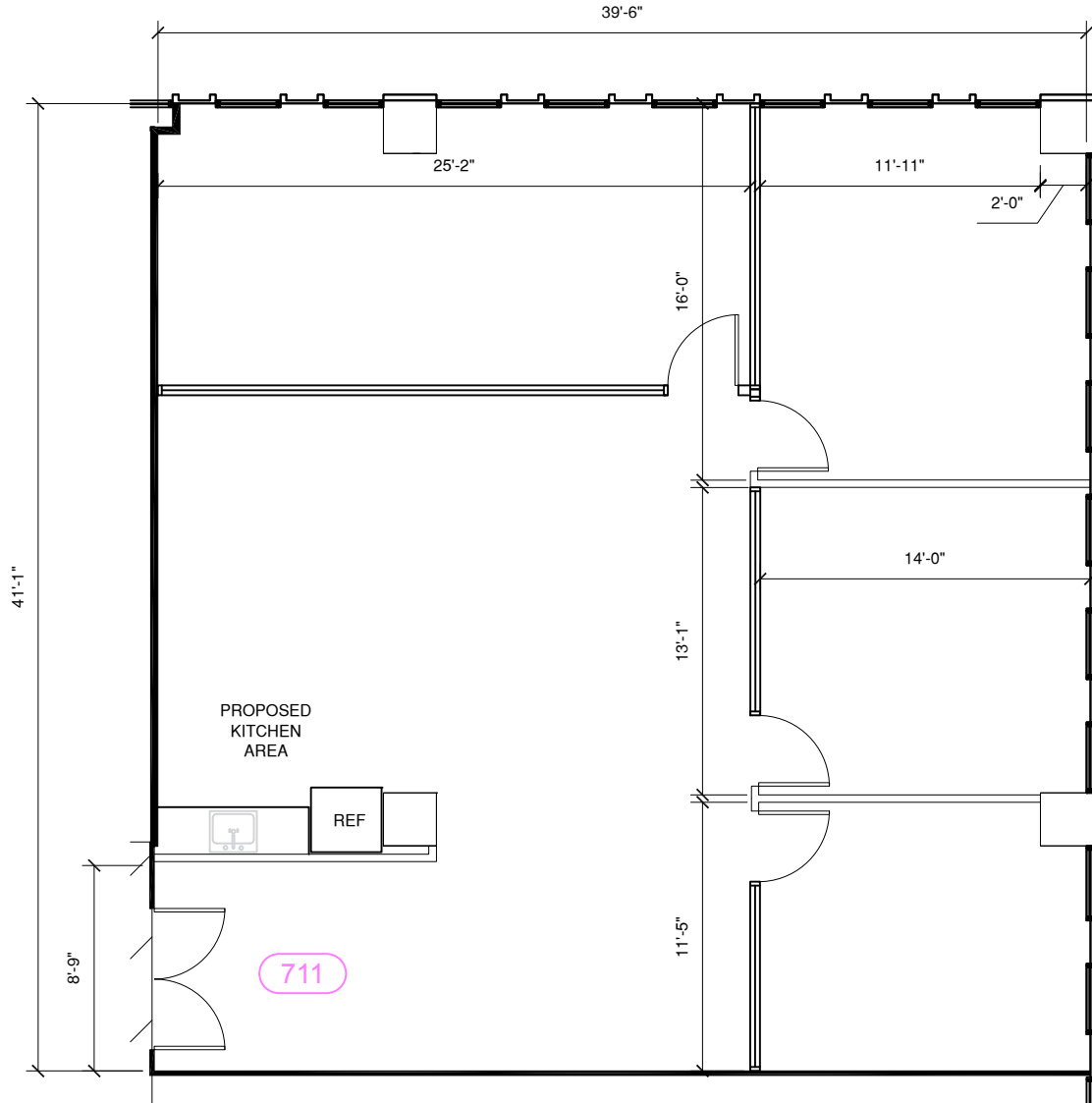
ERIC SACKLER | CALDRE #01057377
📞 310 979 4990 ✉ ERICSACKLER@GMAIL.COM

SUSAN LAU | CALDRE #01516710
📞 213.220.5466 ✉ SUSANLAU@GMAIL.COM

The property information herein is derived from various sources that may include, but not be limited to, county records and the Multiple Listing Service, and it may include approximations. Although the information is believed to be accurate, it is not warranted and you should not rely upon it without personal verification. Real estate agents affiliated with Coldwell Banker Realty are independent contractor sales associates, not employees. ©2021 Coldwell Banker. All Rights Reserved. Coldwell Banker and the Coldwell Banker logos are trademarks of Coldwell Banker Real Estate LLC. The Coldwell Banker® System is comprised of company owned offices which are owned by a subsidiary of Realty Brokerage Group LLC and franchised offices which are independently owned and operated. The Coldwell Banker System fully supports the principles of the Fair Housing Act and the Equal Opportunity Act.

FLOOR PLAN 711:

Negotiable /FSG	
TOTAL USABLE Sq Ft	TOTAL RENTABLE Sq Ft
1,617	1,909



*FLOOR PLAN CAN BE MODIFIED



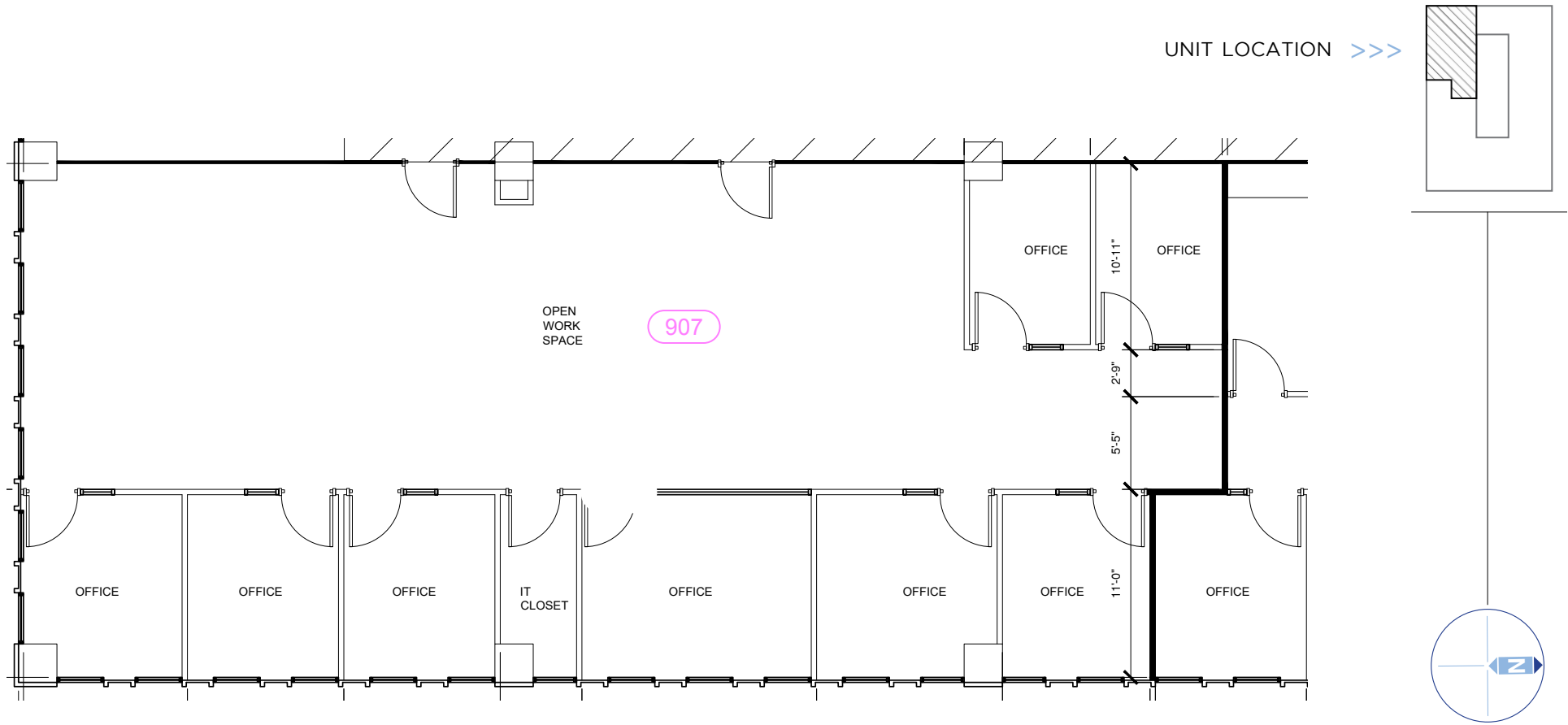
ERIC SACKLER | CALDRE #01057377
 ☎ 310 979 4990 ✉ ERICSACKLER@GMAIL.COM

SUSAN LAU | CALDRE #01516710
 ☎ 213.220.5466 ✉ SUSANLAU@GMAIL.COM

The property information herein is derived from various sources that may include, but not be limited to, county records and the Multiple Listing Service, and it may include approximations. Although the information is believed to be accurate, it is not warranted and you should not rely upon it without personal verification. Real estate agents affiliated with Coldwell Banker Realty are independent contractor sales associates, not employees. ©2021 Coldwell Banker. All Rights Reserved. Coldwell Banker and the Coldwell Banker logos are trademarks of Coldwell Banker Real Estate LLC. The Coldwell Banker® System is comprised of company owned offices which are owned by a subsidiary of Realty Brokerage Group LLC and franchised offices which are independently owned and operated. The Coldwell Banker System fully supports the principles of the Fair Housing Act and the Equal Opportunity Act.

FLOOR PLAN 907:

Negotiable / FSG	
TOTAL USABLE Sq Ft 2,102	TOTAL RENTABLE Sq Ft 2,480



*FLOOR PLAN CAN BE MODIFIED



ERIC SACKLER | CALDRE #01057377
 ☎ 310 979 4990 ✉ ERICSACKLER@GMAIL.COM

SUSAN LAU | CALDRE #01516710
 ☎ 213.220.5466 ✉ SUSANLAU@GMAIL.COM

The property information herein is derived from various sources that may include, but not be limited to, county records and the Multiple Listing Service, and it may include approximations. Although the information is believed to be accurate, it is not warranted and you should not rely upon it without personal verification. Real estate agents affiliated with Coldwell Banker Realty are independent contractor sales associates, not employees. ©2021 Coldwell Banker. All Rights Reserved. Coldwell Banker and the Coldwell Banker logos are trademarks of Coldwell Banker Real Estate LLC. The Coldwell Banker® System is comprised of company owned offices which are owned by a subsidiary of Realty Brokerage Group LLC and franchised offices which are independently owned and operated. The Coldwell Banker System fully supports the principles of the Fair Housing Act and the Equal Opportunity Act.