

# WRIGLEY CREEK INDUSTRIAL PARK

BAY AREA

386 Railroad Court  
Milpitas, CA 95035



FOR LEASE

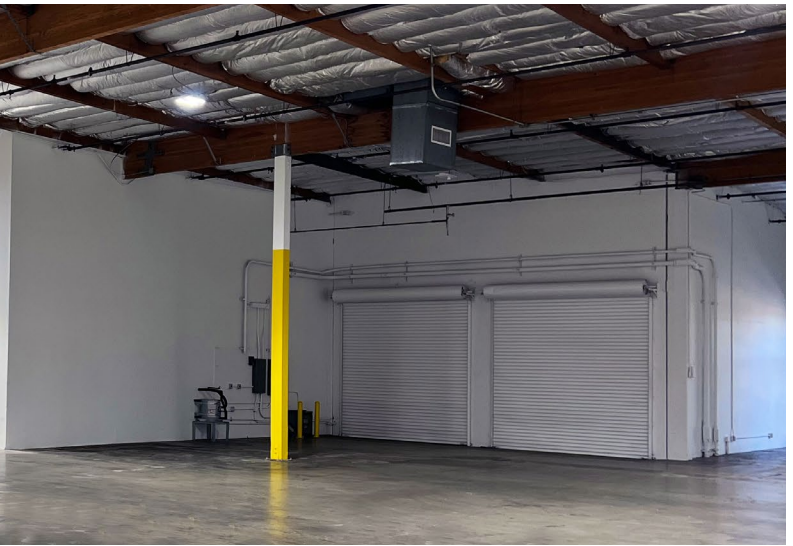
UNIT 386

±12,405 SF



LEASED BY

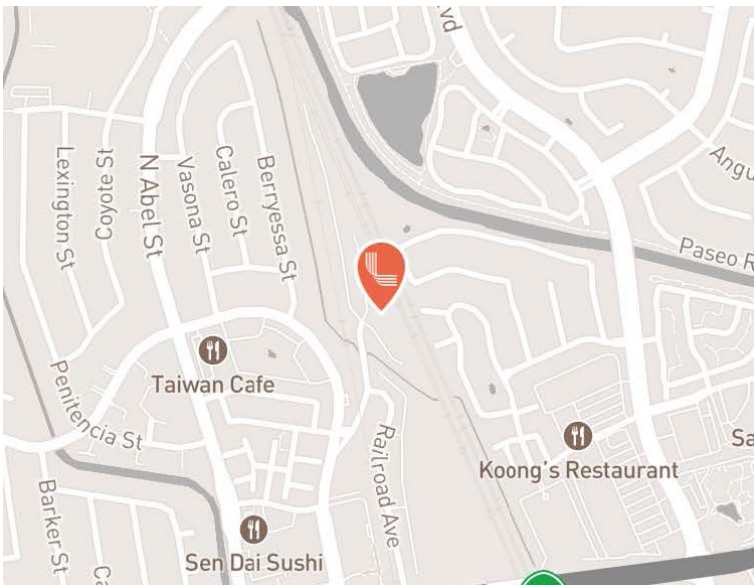


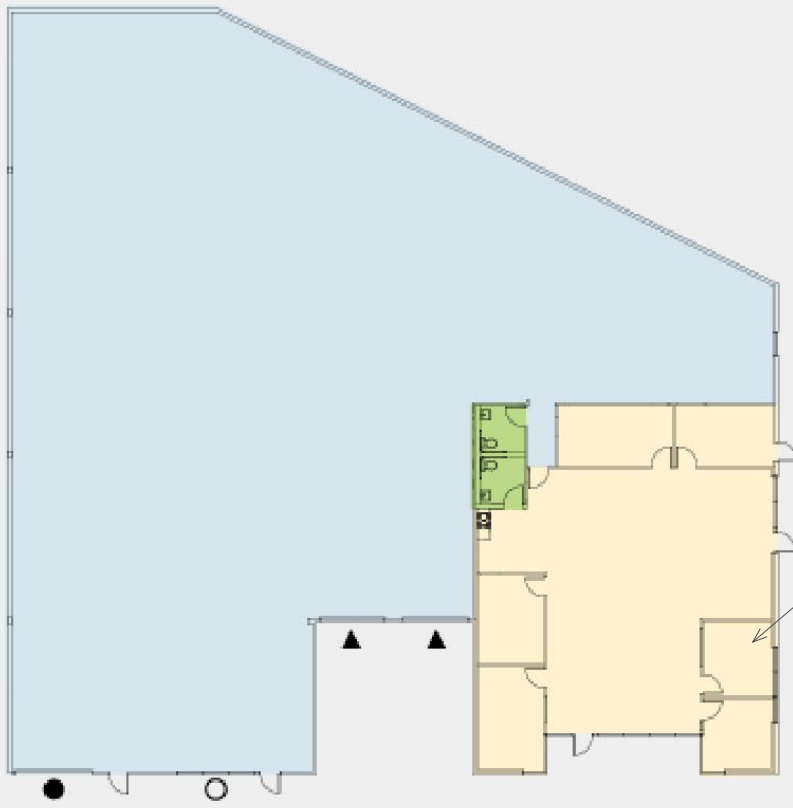


Located in Milpitas' established industrial corridor, this distribution-ready facility offers direct access to Silicon Valley's key freight routes and sits just 1.5 miles from Milpitas BART, connecting tenants to the region's broader transit and logistics network.

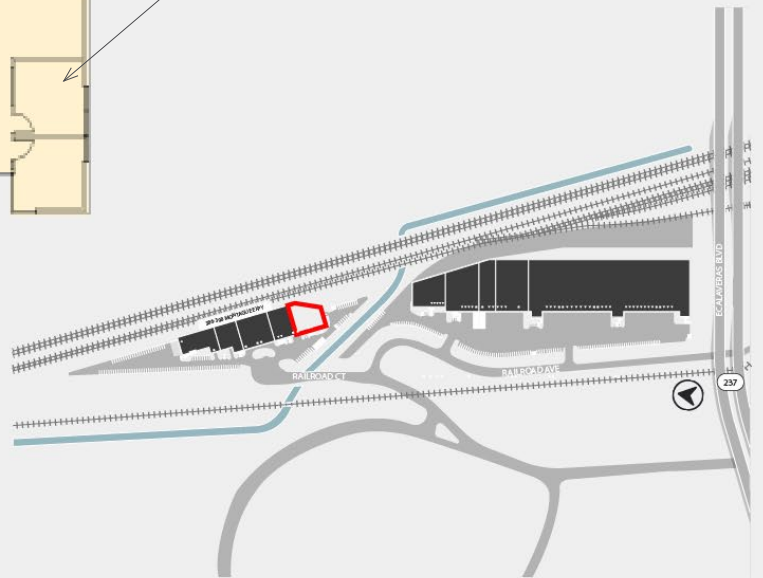
## PROPERTY HIGHLIGHTS

Available Space	±12,405 Square Feet
Build Out	30% HVAC Office Space
Dock High Doors	2
Grade Level Doors	1
Clear Height	18'
Power	200 Amps @ 277/480 Volts
Location	Excellent access to I-880/680 & Hwy





- = Carpet
- = VCT
- = Concrete
- = Grade Level Door
- ▲ = Dock High Door
- = Potential Grade Level Door



# CONTACT INFORMATION

386 Railroad Court  
Milpitas, CA 95035

**Ed Hofer, SIOR**

ed.hofer@colliers.com  
(408) 482-4182

CA Lic. 00923494

**Emerson Hofer**

emerson.hofer@colliers.com  
(408) 472-9129

CA Lic. 02065843

**Dave Schmidt, SIOR**

david.schmidt@colliers.com  
(408) 316-6611

CA Lic. 00821451

This document is for informational purposes only and does not constitute an offer or acceptance of a lease. Any lease agreement must be in writing and signed by the landlord. No representations or warranties are made except as expressly stated in a signed lease. Information is provided "as is" and may be subject to errors or change without notice.



LEASED BY

