



TISHMAN SPEYER

333 Bush





Make the Most of **Each Day**



Open Doors to Discovery

When you work at 333 Bush Street, it begs the question: what don't you have? A world-class building inside and out, you'll find amenities and services fit for everyone and any lifestyle. Our modern lobby renovations, state-of-the-art fitness center, and EV charging stations will help keep you feeling focused and recharged every day.



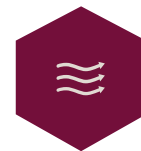


A Commitment to Health

Now more than ever, we are committed to the wellness and safety of our customers by setting a new standard for cleaning, health and hygiene at the workplace.



100% outside air. Optimized HVAC air circulation to help draw in more fresh air from the outside.



Upgraded air filters to allow for the maximum allowable filtration specifications.



Employment of CDC recommended, EPA-registered anti-viral disinfectant cleaners.



Building Healthy, *Connected* *Communities.*

Our commitment to building healthy, connected communities across the world is top of mind in all that we do and stems from our commitment to ESG. At Tishman Speyer, ESG encompasses the major efforts we make around sustainability, resource efficiency and healthy buildings, community engagement, DE&I and employee engagement, and our investment in culture, integrity and human capital.



ESG

We are passionate about our commitment to responsible environmental stewardship and civic engagement.



Community

Our teams are always willing to put in the extra effort to support tight-knit neighborhoods and connected communities.



Placemaking

Investing in ESG means investing in people, and investing in people leads to stronger, more resilient communities.



Hospitality/Creativity

ESG has become a big part of the way we think about creating inspired environments. Green design can make a huge impact on wellbeing.



Innovation

Healthy buildings call for innovative solutions. As a future-focused business, it is crucial to consider the impact that our projects have on the world.



Flexibility & Partnership

Strategic, social and civic partnerships are quite familiar to Tishman Speyer. Our partnerships help ensure our projects inspire communities and take care of them.



Union Square



Apple Store



Wayfare Tavern

Right in the Heart of the Bay

Find yourself in the middle of just about everything — stunning nature, trendy cultural hotspots, and over 50 unique dining experiences within two blocks. At 333 Bush, the possibilities are truly endless.



St. Mary's Square Park



Chinatown



**Hassle-free Catering
& On-site Food Delivery**



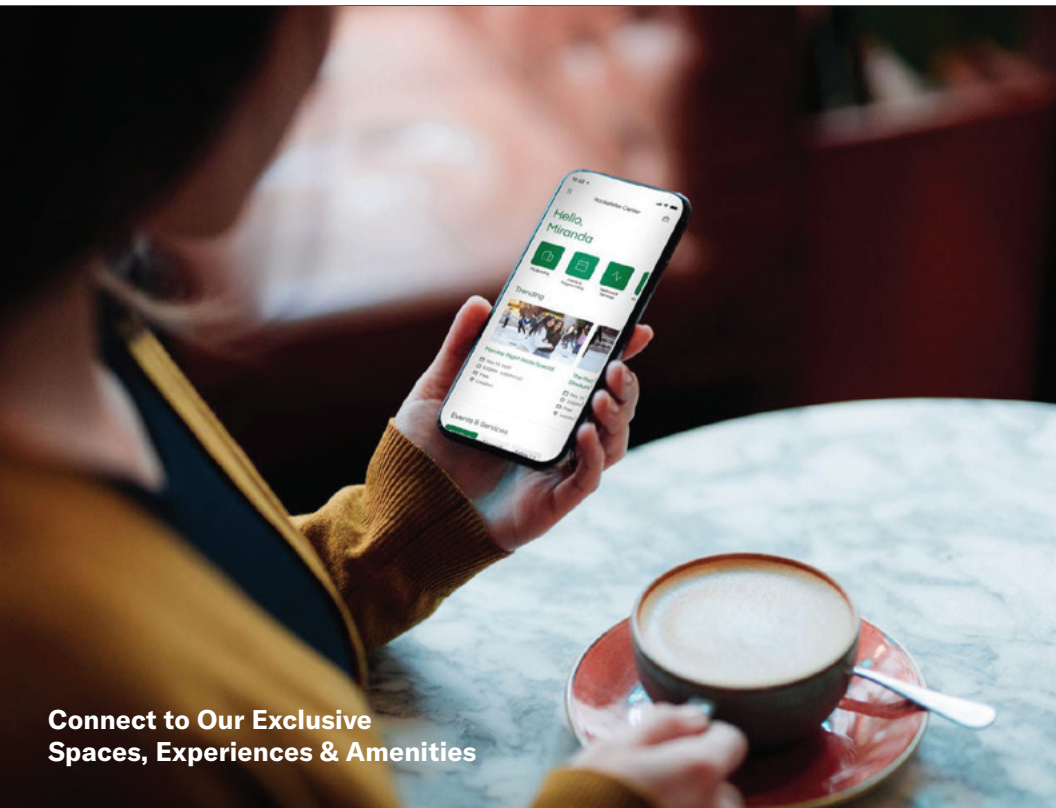
Premium Beauty Services



ZO
BY TISHMAN SPEYER

ZO is Tishman Speyer's global amenities network, providing members with access to our world-class spaces, services, and experiences. ZO connects our members all over the world to a vibrant and inspiring community that enriches personal and professional networks, fosters collaboration, and helps reimagine the role of the workplace beyond the four walls of an office.

The ZO App has everything we offer in the palm of your hand. Learn more at tishmanspeyer.com/zo.



**Connect to Our Exclusive
Spaces, Experiences & Amenities**



Health & Wellness Classes



Art & Cultural Events

Elevated, flexible workspaces on a *global scale*

studio

BY TISHMAN SPEYER

An entire story of Coworking at its best, on the 4th floor.

Private, move-in ready office space with premium furniture and shared amenities. Access to meeting rooms and common areas to inspire creativity, collaboration, and productivity. Explore Studio by Tishman Speyer at yourstudio.com



Elevated design



Flexible terms



Inclusive pricing

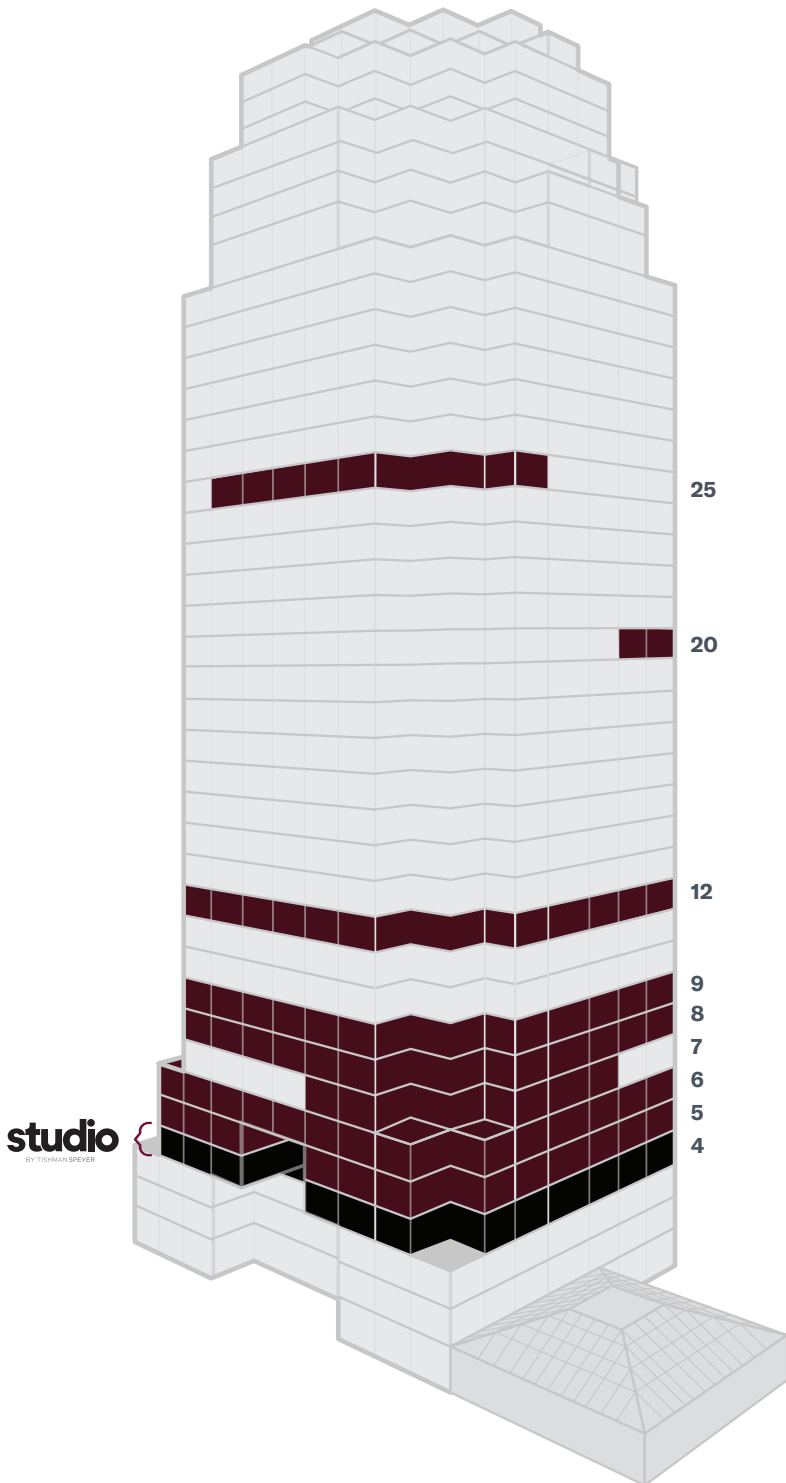
Steps From Everywhere

Ultimately connected, where the relationship between business and transit, work and leisure arrive in a single seamless experience.

- 1 SALESFORCE TRANSIT CENTER
- 2 BART & MUNI STATION
- 3 MUNI STATION - FERRY PLAZA
- 4 GOLDEN GATE FERRY TERMINAL
- 5 BELOW-GRADE VALET PARKING



Big Block Availability Summary



Floor	Suite	SF Available	Date Available	Full Details
25	2500	5,143 SF	11/15/25	View Details
20	2020	4,164 SF	5/1/25	View Details
12	1200	17,662 SF	8/1/25	View Details
9	900	17,566 SF	NOW	View Details
8	800	19,075 SF	NOW	View Details
7	700	5,958 SF	NOW	View Details
6	600	17,291 SF	NOW	View Details
5	500	18,180 SF	NOW	View Details
4	400	studio FLEXIBLE	NOW	View Details

ALLEN PALMER
415.344.6622
apalmer@tishmanspeyer.com

PATRICK DEVINGER
415.273.7921
pdevinger@tishmanspeyer.com



TISHMAN SPEYER

Availability

- **FLOOR 5**
- **AVAILABLE ASAP**
- **18,180 SF***

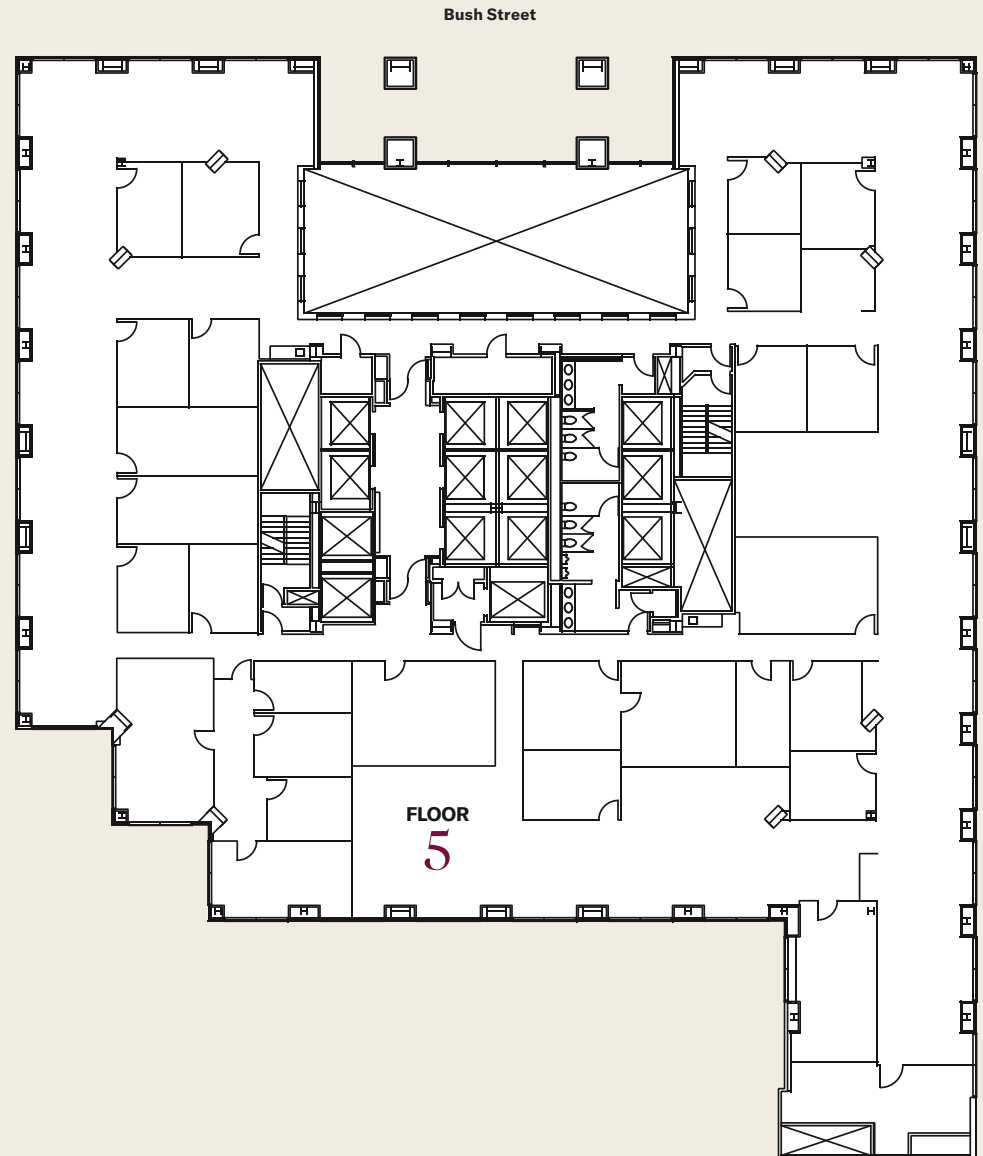
*Can be combined for up to 125,040 SF contiguous

Suite Features

- Highly improved professional build out with ample conference rooms
- Can be delivered as-is or in shell condition



Visit [tishmanspeyer.com](https://www.tishmanspeyer.com) or click above for a link to more information



ALLEN PALMER
415.344.6622
apalmer@tishmanspeyer.com

PATRICK DEVINGER
415.273.7921
pdevinger@tishmanspeyer.com



TISHMAN SPEYER

Availability

- **FLOOR 6**
- **AVAILABLE ASAP**
- **17,291 SF***

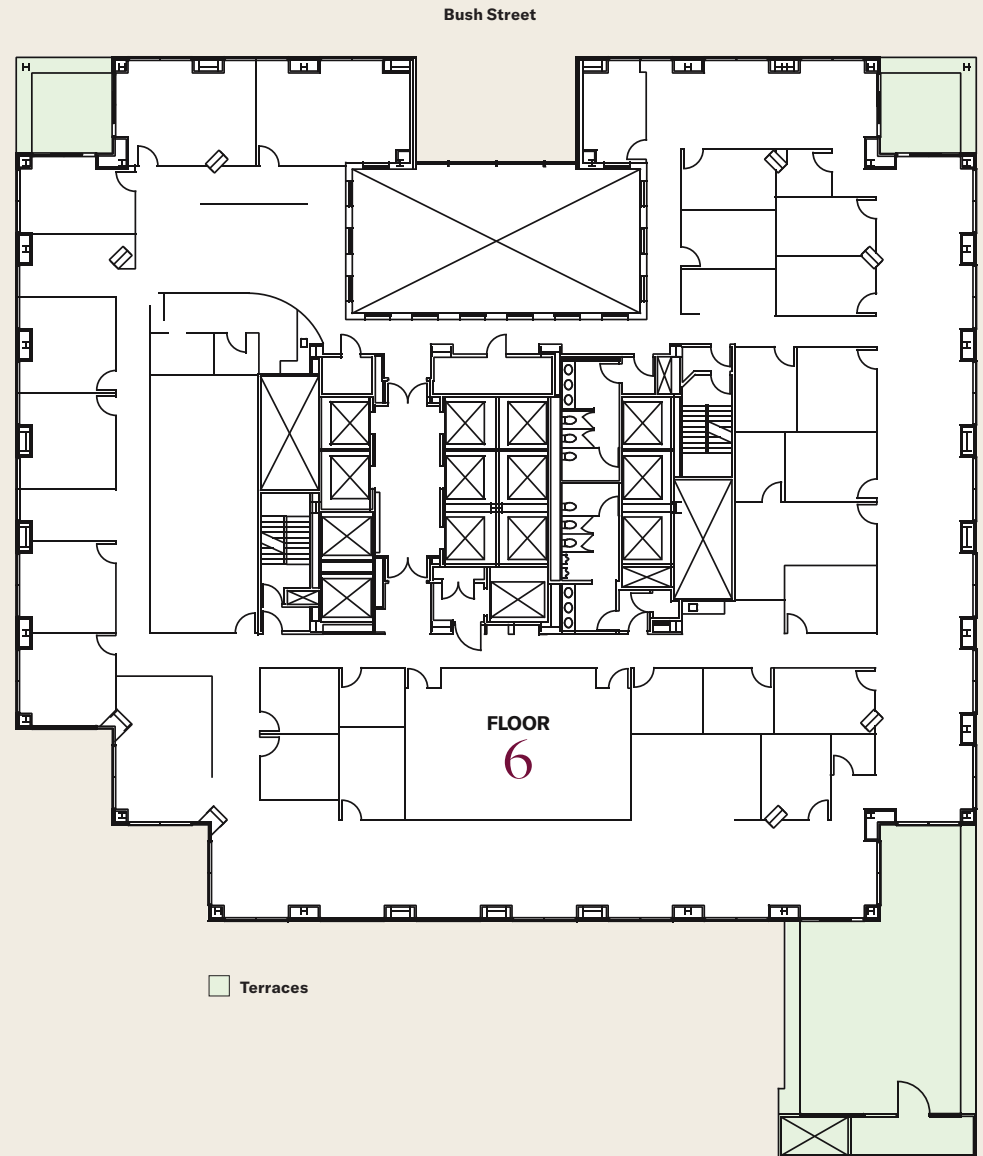
*Can be combined for up to 125,040 SF contiguous

Suite Features

- Three (3) outdoor terraces
- Highly improved professional build out with ample conference rooms
- Can be delivered as-is or in shell condition



Visit [tishmanspeyer.com](https://www.tishmanspeyer.com) or click above for a link to more information



ALLEN PALMER
415.344.6622
apalmer@tishmanspeyer.com

PATRICK DEVINGER
415.273.7921
pdevinger@tishmanspeyer.com



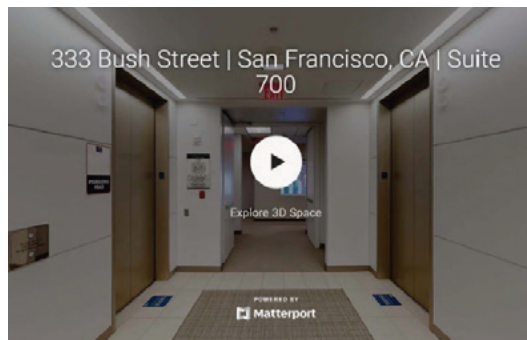
TISHMAN SPEYER

Availability

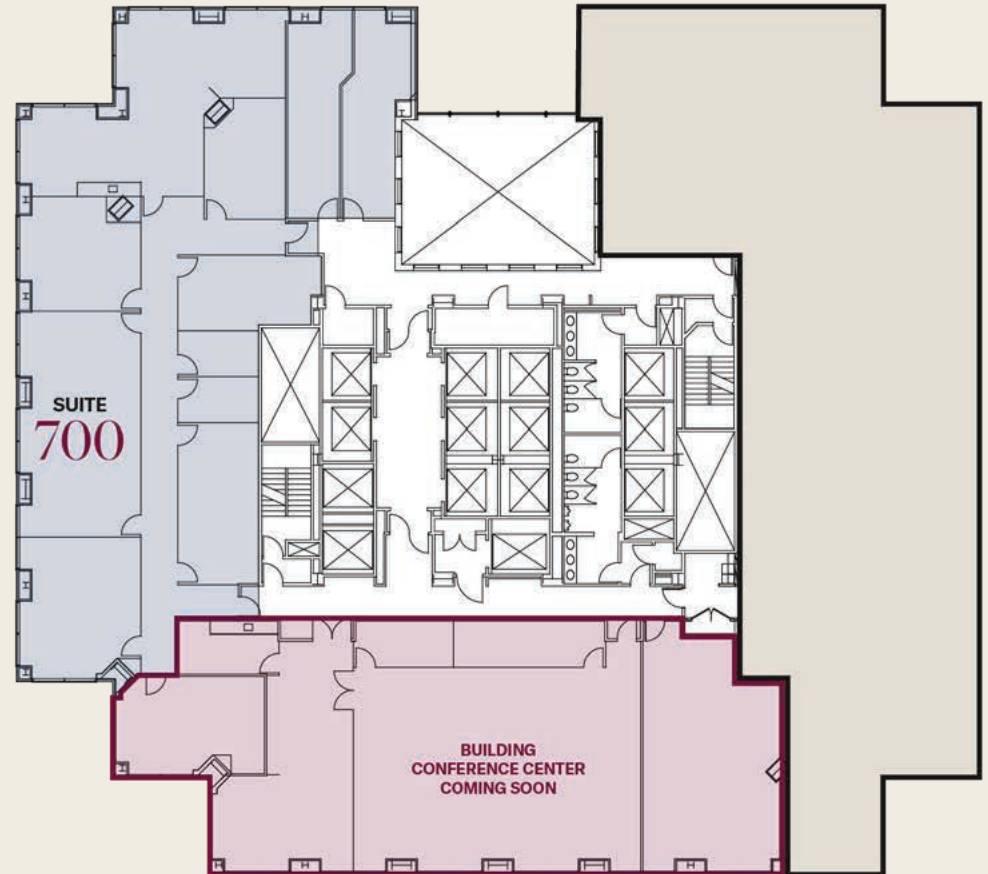
- SUITE 700
- FLOOR 7
- AVAILABLE NOW
- 5,958 SF

Suite Features

- 2nd generation professional improvements
- Flexible layout, potential value in existing improvements
- Elevator identity
- Bush Street window line with good natural light and outlooks



Visit tishmanspeyer.com or click above for a link to more information



ALLEN PALMER
415.344.6622
apalmer@tishmanspeyer.com

PATRICK DEVINGER
415.273.7921
pdevinger@tishmanspeyer.com



TISHMAN SPEYER

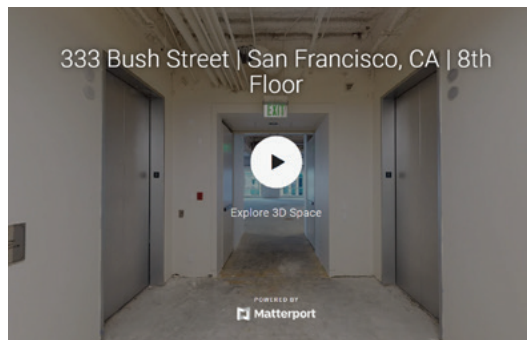
Availability

- **FLOOR 8**
- **AVAILABLE NOW**
- **19,075 SF***

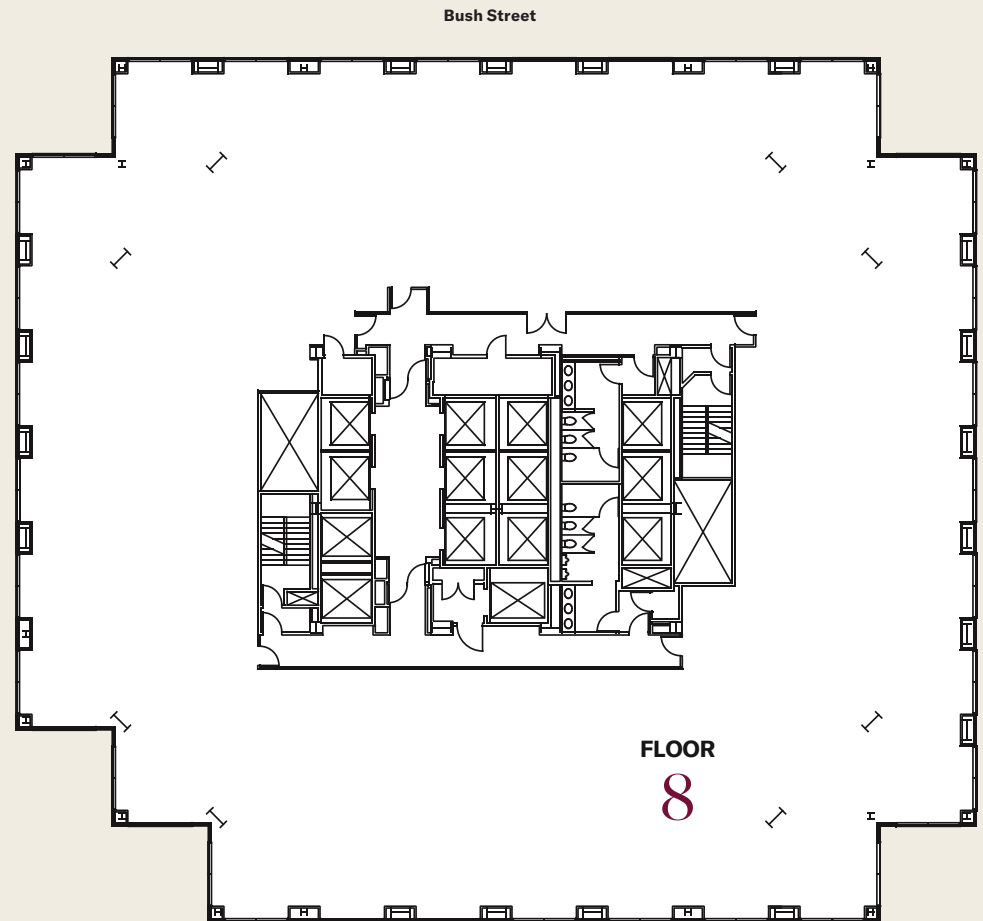
*Can be combined with Suite 700 and/or Suite 775

Suite Features

- Shell condition



Visit [tishmanspeyer.com](https://www.tishmanspeyer.com) or click above for a link to more information



ALLEN PALMER
415.344.6622
apalmer@tishmanspeyer.com

PATRICK DEVINGER
415.273.7921
pdevinger@tishmanspeyer.com



TISHMAN SPEYER

Availability

- **FLOOR 9**
- **AVAILABLE NOW**
- **17,566 RSF***

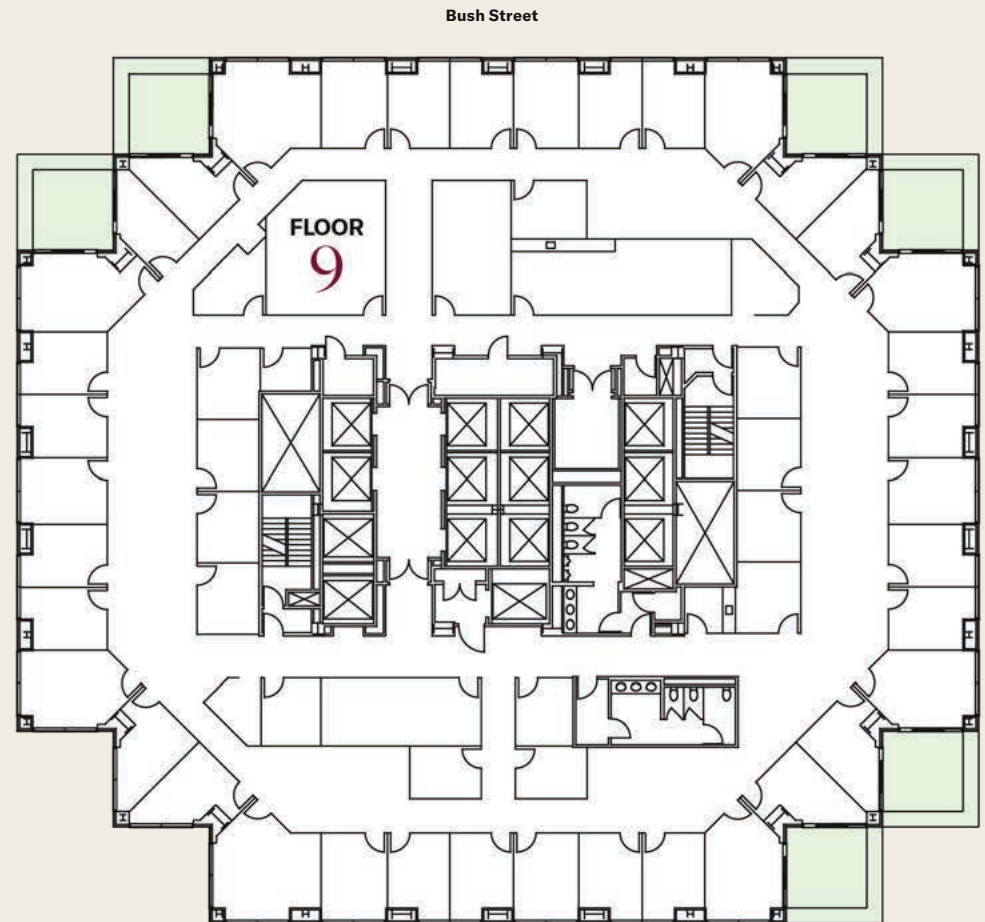
*Can be combined for up to 125,040 SF contiguous

Suite Features

- Existing private office build out with over 35 exterior private offices



Visit [tishmanspeyer.com](https://www.tishmanspeyer.com) or click above for a link to more information



ALLEN PALMER
415.344.6622
apalmer@tishmanspeyer.com

PATRICK DEVINGER
415.273.7921
pdevinger@tishmanspeyer.com



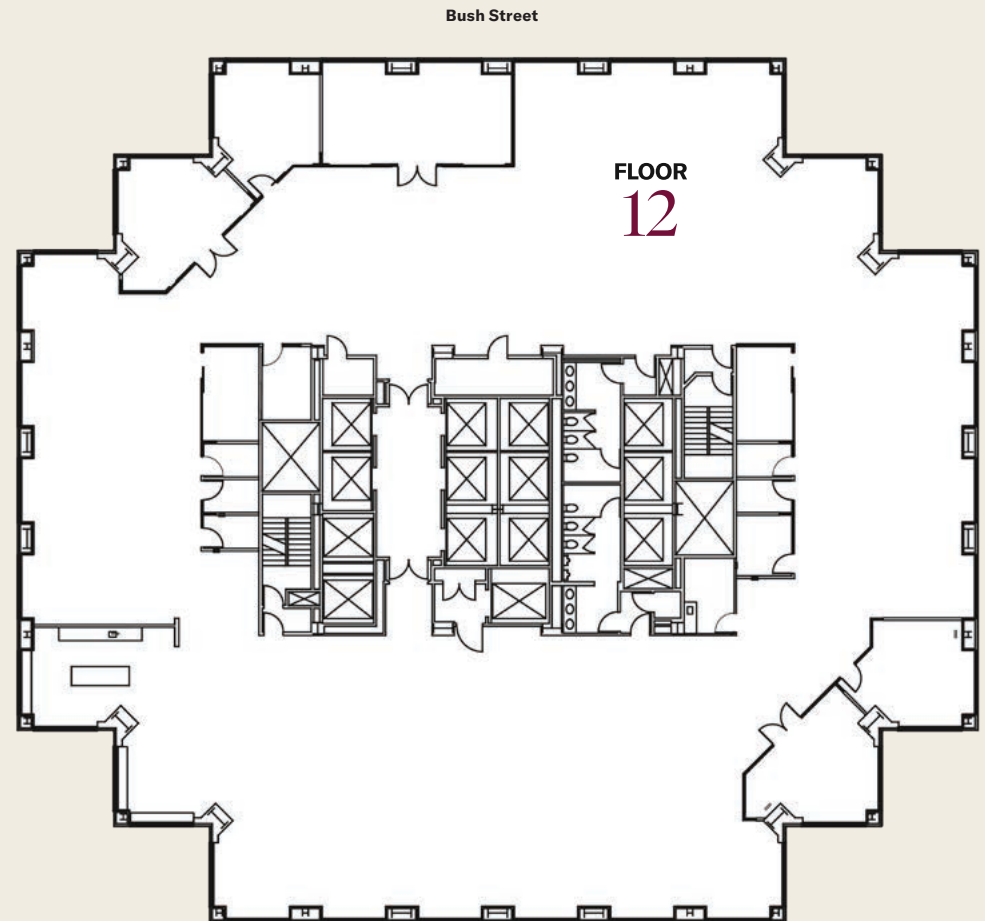
TISHMAN SPEYER

Availability

- **FLOOR 12**
- **AVAILABLE 8/1/25**
- **17,662 RSF***

Suite Features

- Full floor with creative finishes including exposed ceilings and polished concrete
- 5 large conf. rooms plus 8 medium / small conf. rooms
- Excellent natural light and views
- Wellness room
- Open kitchen with bar height seating
- FF&E available



ALLEN PALMER
415.344.6622
apalmer@tishmanspeyer.com

PATRICK DEVINGER
415.273.7921
pdevinger@tishmanspeyer.com



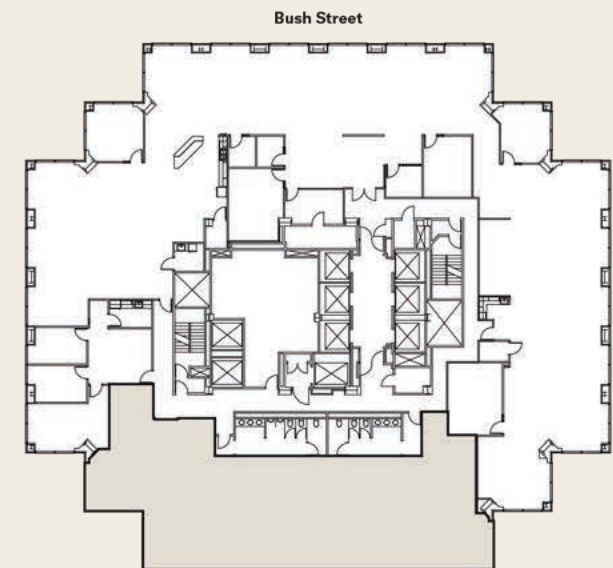
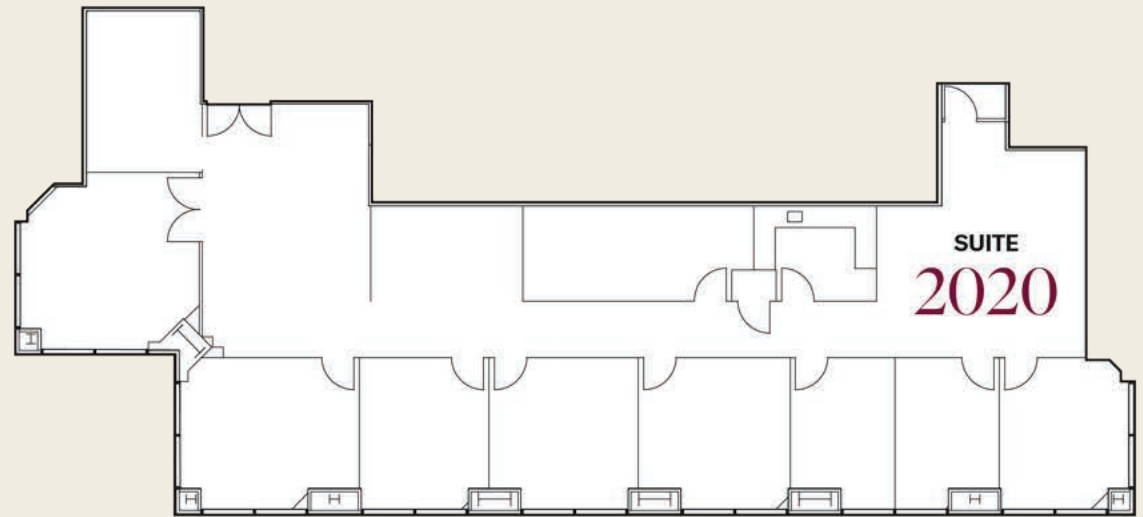
TISHMAN SPEYER

Availability

- SUITE 2020
- FLOOR 20
- AVAILABLE 5/1/25
- 4,164 SF

Suite Features

- Southwest corner suite
- Excellent light with partial water views
- 2nd generation professional improvements
- Formal reception, 8 private offices, conference room, open area for workstations



ALLEN PALMER
415.344.6622
apalmer@tishmanspeyer.com

PATRICK DEVINGER
415.273.7921
pdevinger@tishmanspeyer.com



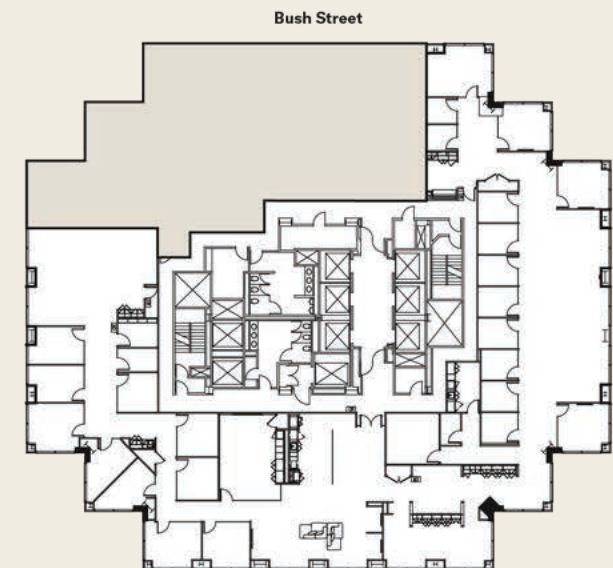
TISHMAN SPEYER

Availability

- SUITE 2500
- FLOOR 25
- AVAILABLE 11/15/25
- 5,143 SF

Suite Features

- Double door elevator identity
- Excellent light with partial water views
- Northwest corner suite with excellent light and partial Bay Views
- 2nd generation professional improvements
- Formal reception, 6 private offices, conference room, small meeting room
- Open area for workstations, updated pantry, IT / storage room



ALLEN PALMER
415.344.6622
apalmer@tishmanspeyer.com

PATRICK DEVINGER
415.273.7921
pdevinger@tishmanspeyer.com



TISHMAN SPEYER

Our Bay Area at a Glance

Creative innovation meets artistic integration in all of our San Francisco Bay Area-based properties. From thriving downtown office towers to residential developments beaming with possibility, creating meaningful experiences that seamlessly connect work, home and life has been at the heart of who we are since 1978.

2.4MM
SF OFFICE SPACE

3,200+
MARKET RATE UNITS

1,100+
AFFORDABLE HOUSING UNITS

ACTIVE PROPERTIES



One Bush



160 Spear



333 Bush



222 Second



595 Market



400 Castro

NEW DEVELOPMENTS



Brannan Square



Mission Rock



MIRA



Get in Touch

ALLEN PALMER

415.344.6622

apalmer@tishmanspeyer.com

PATRICK DEVINGER

415.273.7921

pdevinger@tishmanspeyer.com



TISHMAN SPEYER