

790 MADISON AVENUE

Southwest Corner of Madison Avenue and East 67th Street

ONE-OF-A-KIND SHOWROOM/GALLERY/OFFICE SPACE FOR LEASE



- Rare Office Opportunity on Madison Avenue
- Entrance on Madison Avenue
- Full Service office building with Full-Time Guard/Doorman
- Dry use only—No Medical
- Excellent for Showroom, Fashion, Gallery, or General Offices
- Office has 25 feet of windows on Madison Avenue
- Call or text Gary Dana on his cell: 516-946-7207

SIZE

Suite 401 1300 square feet

TERM

Short Term or Long Term

POSSESSION

Immediate

TENANT

Currently

ELECTRIC

\$3.75 per sq ft

EXPOSURE

4th Floor Facing Madison Avenue

ASKING RENT

\$7750 Per Month

Exclusively represented by:

THE **DANA** COMMERCIAL TEAM

AT DOUGLAS ELLIMAN REAL ESTATE

GARY **DANA** 212.692.6183

gdana@elliman.com

RICK **DANA** 212.692.6182

rdana@elliman.com

CHRIS **DANA** 212.455.4721

cdana@elliman.com

© 2017 DOUGLAS ELLIMAN REAL ESTATE. ALL MATERIAL PRESENTED HEREIN IS INTENDED FOR INFORMATION PURPOSES ONLY. WHILE THIS INFORMATION IS BELIEVED TO BE CORRECT, IT IS REPRESENTED SUBJECT TO ERRORS, OMISSIONS, CHANGES OR WITHDRAWAL WITHOUT NOTICE. ALL PROPERTY INFORMATION, INCLUDING, BUT NOT LIMITED TO SQUARE FOOTAGE, ROOM COUNT, NUMBER OF BEDROOMS AND THE SCHOOL DISTRICT IN PROPERTY LISTINGS SHOULD BE VERIFIED BY YOUR OWN ATTORNEY, ARCHITECT OR ZONING EXPERT. IF YOUR PROPERTY IS CURRENTLY LISTED WITH ANOTHER REAL ESTATE BROKER, PLEASE DISREGARD THIS OFFER. IT IS NOT OUR INTENTION TO SOLICIT THE OFFERINGS OF OTHER REAL ESTATE BROKERS. WE COOPERATE WITH THEM FULLY. EQUAL HOUSING OPPORTUNITY.

THE **DANA** COMMERCIAL TEAM
EST. 1911
Douglas Elliman
REAL ESTATE

790

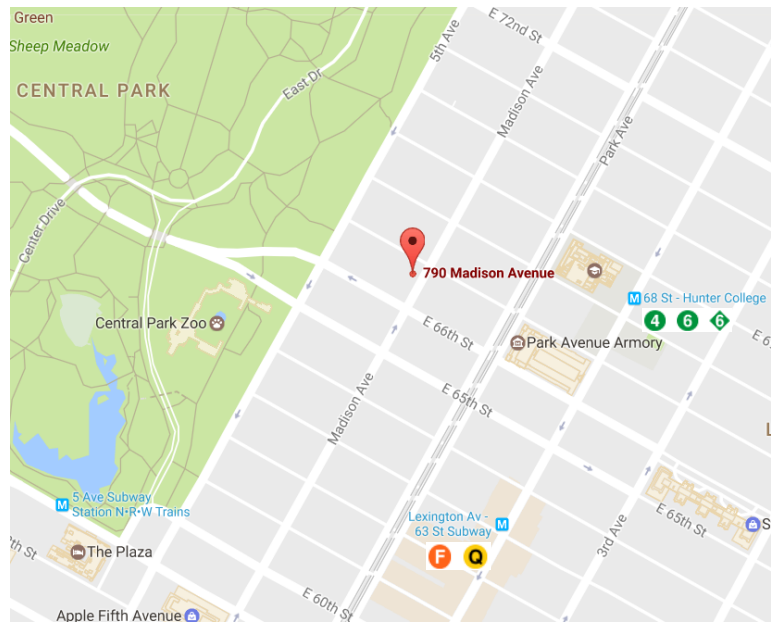
Madison Avenue

Southwest Corner of Madison Avenue and East 67th Street

East 67th Street



—Madison Avenue—



THE DANA COMMERCIAL TEAM

AT DOUGLAS ELLIMAN REAL ESTATE

GARY DANA 212.692.6183
 RICK DANA 212.692.6182
 CHRIS DANA 212.455.4721

gdana@elliman.com
 rdana@elliman.com
 cdana@elliman.com

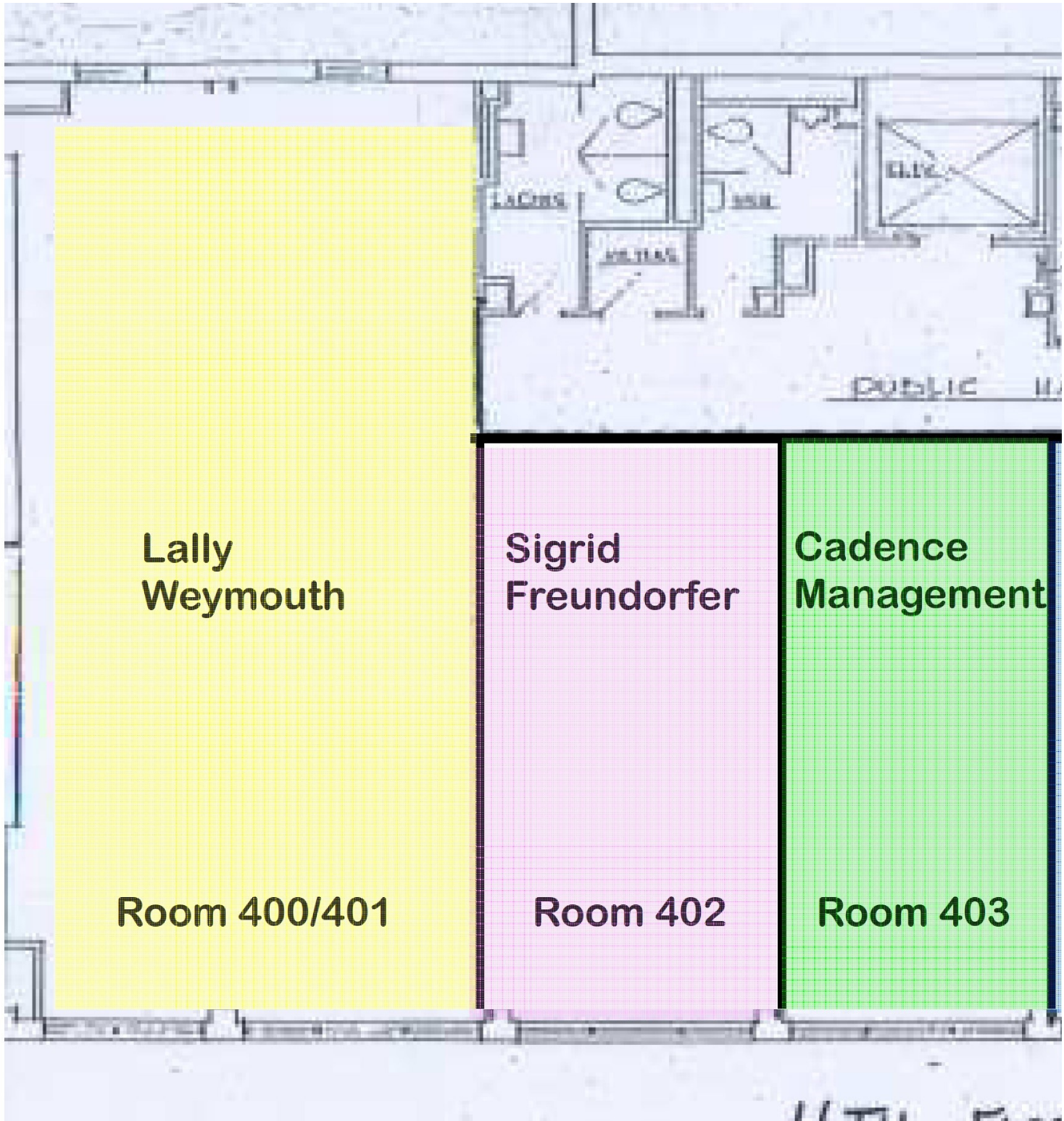


© 2017 DOUGLAS ELLIMAN REAL ESTATE. ALL MATERIAL PRESENTED HEREIN IS INTENDED FOR INFORMATION PURPOSES ONLY. WHILE THIS INFORMATION IS BELIEVED TO BE CORRECT, IT IS REPRESENTED SUBJECT TO ERRORS, OMISSIONS, CHANGES OR WITHDRAWAL WITHOUT NOTICE. ALL PROPERTY INFORMATION, INCLUDING, BUT NOT LIMITED TO SQUARE FOOTAGE, ROOM COUNT, NUMBER OF BEDROOMS AND THE SCHOOL DISTRICT IN PROPERTY LISTINGS SHOULD BE VERIFIED BY YOUR OWN ATTORNEY, ARCHITECT OR ZONING EXPERT. IF YOUR PROPERTY IS CURRENTLY LISTED WITH ANOTHER REAL ESTATE BROKER, PLEASE DISREGARD THIS OFFER. IT IS NOT OUR INTENTION TO SOLICIT THE OFFERINGS OF OTHER REAL ESTATE BROKERS. WE COOPERATE WITH THEM FULLY. EQUAL HOUSING OPPORTUNITY.

790

Madison Avenue

Southwest Corner of Madison Avenue and East 67th Street



**Lally
Weymouth**

Room 400/401

**Sigrid
Freundorfer**

Room 402

**Cadence
Management**

Room 403

THE **DANA** COMMERCIAL TEAM
AT DOUGLAS **ELLIMAN** REAL ESTATE

GARY DANA 212.692.6183
RICK DANA 212.692.6182
CHRIS DANA 212.455.4721

gdana@elliman.com
rdana@elliman.com
cdana@elliman.com

THE **DANA** COMMERCIAL TEAM
EST. 1911
Douglas Elliman
REAL ESTATE

© 2017 DOUGLAS ELLIMAN REAL ESTATE. ALL MATERIAL PRESENTED HEREIN IS INTENDED FOR INFORMATION PURPOSES ONLY. WHILE THIS INFORMATION IS BELIEVED TO BE CORRECT, IT IS REPRESENTED SUBJECT TO ERRORS, OMISSIONS, CHANGES OR WITHDRAWAL WITHOUT NOTICE. ALL PROPERTY INFORMATION, INCLUDING, BUT NOT LIMITED TO SQUARE FOOTAGE, ROOM COUNT, NUMBER OF BEDROOMS AND THE SCHOOL DISTRICT IN PROPERTY LISTINGS SHOULD BE VERIFIED BY YOUR OWN ATTORNEY, ARCHITECT OR ZONING EXPERT. IF YOUR PROPERTY IS CURRENTLY LISTED WITH ANOTHER REAL ESTATE BROKER, PLEASE DISREGARD THIS OFFER. IT IS NOT OUR INTENTION TO SOLICIT THE OFFERINGS OF OTHER REAL ESTATE BROKERS. WE COOPERATE WITH THEM FULLY. EQUAL HOUSING OPPORTUNITY.