

# 1458 HOWARD STREET

FOR LEASE | HIGH QUALITY OFFICE WITH SKYLIGHTS IN SOMA

**TCP**  
**TOUCHSTONE**  
COMMERCIAL PARTNERS



[WWW.TCPRE.COM](http://WWW.TCPRE.COM)

**JOHN-CLAY MORRIS** DRE # 01263079  
415.517.5400 | [jcmorris@tcpre.com](mailto:jcmorris@tcpre.com)

# 1458 HOWARD STREET

## PROPERTY SUMMARY

### ADDRESS

1458 Howard Street, San Francisco, CA 94103

### AVAILABLE SPACE

+/- 9,000 Square Feet on Two Floors

### RENTAL RATE

\$39.00 / Square Foot / Year, Industrial Gross

### AVAILABILITY

Immediately

## BUILDING ATTRIBUTES

- + "Plug & Play" Office-Intensive or Creative Space
- + Furniture May Be Available
- + Eighteen (18) Private Offices, Multiple Conference Rooms
- + Upgraded Kitchens on Both Floors
- + Upgraded Bathroom Fixtures and Finishes
- + Skylights and Operable Windows
- + Upgraded Glass Curtain Exterior
- + Upgraded HVAC, Full Electrical and Plumbing Upgrades
- + Close Proximity to BART and MUNI



# 1458 HOWARD STREET

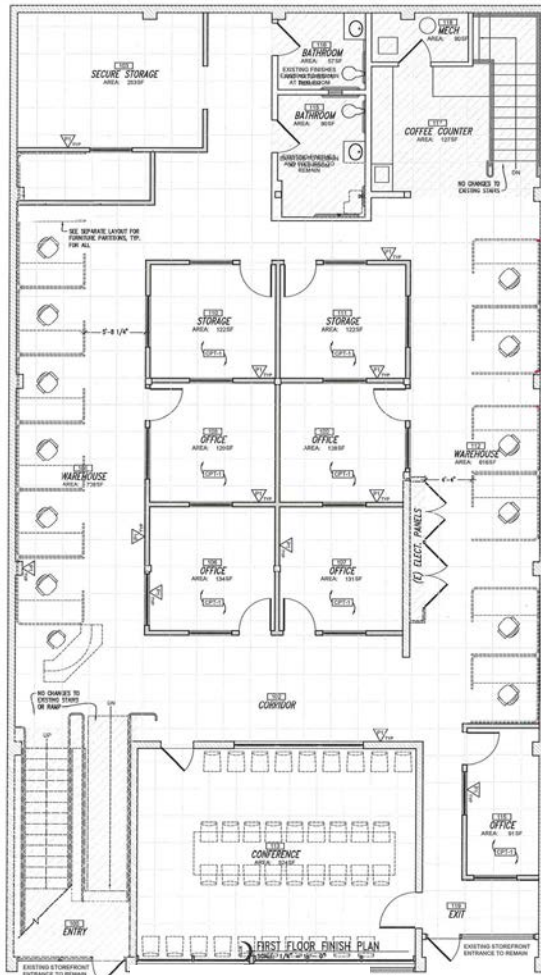


# 1458 HOWARD STREET

## FLOOR PLAN

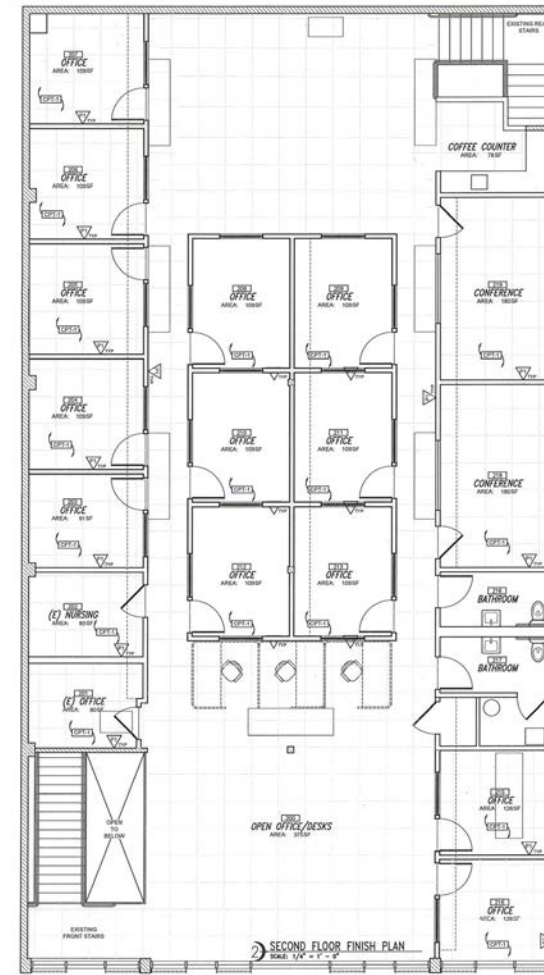
+/- 9,000 Square Feet on Two Floors

### GROUND FLOOR



Howard Street

### SECOND FLOOR



Howard Street

# 1458 HOWARD STREET

## LOCATION OVERVIEW

Desirable South of Market location, walkable to nearby amenities, public transportation and to surrounding neighborhoods.



**05 MIN** to Market & 9th Muni  
**12 MIN** to City Hall  
**12 MIN** to Civic Center Bart



**07 MIN** to Mission District  
**10 MIN** to Union Square  
**14 MIN** to Financial District



**03 MIN** to 101 On-Ramp  
**05 MIN** to 80 On-Ramp  
**06 MIN** to 280 On-Ramp

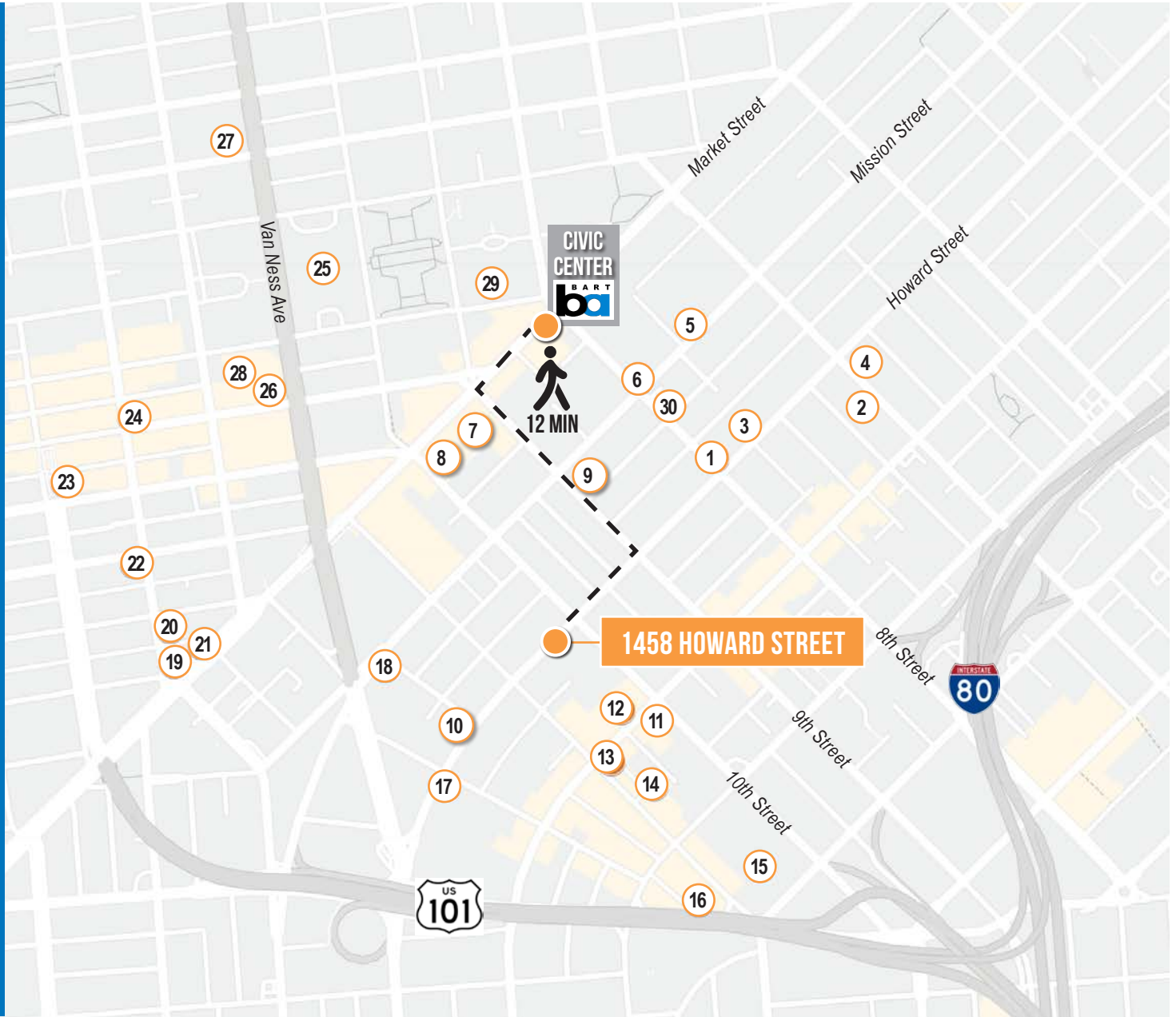


**1458**  
HOWARD  
STREET

# 1458 HOWARD STREET

## NEARBY AMENITIES

- 1.....Harvest Urban Market
- 2.....Sightglass Coffee
- 3.....Enterprise Brewing
- 4.....SF Champagne Society
- 5.....Merchant Roots
- 6.....Logo Vintage
- 7.....Walgreens
- 8.....X Corp. Headquarters
- 9.....Moya
- 10....SHOWA Le Gourmet Tonkatsu
- 11.....Sextant Coffee Roasters
- 12.....Extra Space Storage
- 13.....Basil Canteen
- 14.....Californios
- 15.....Costco
- 16.....Monarch Gardens
- 17.....1601 Bar & Kitchen
- 18.....Zaoh Sushi Restaurant
- 19.....Espetus Churrascaria
- 20.....Hotel Biron
- 21.....Zuni Cafe
- 22.....Rich Table
- 23.....Biergarten
- 24.....Absinthe Brasserie & Bar
- 25.....San Francisco City Hall
- 26.....San Francisco Symphony
- 27.....San Francisco Opera
- 28.....Davies Hall
- 29.....San Francisco Public Library
- 30.....Sizzling Pot King



# 1458 HOWARD STREET



HARVEST URBAN MARKET



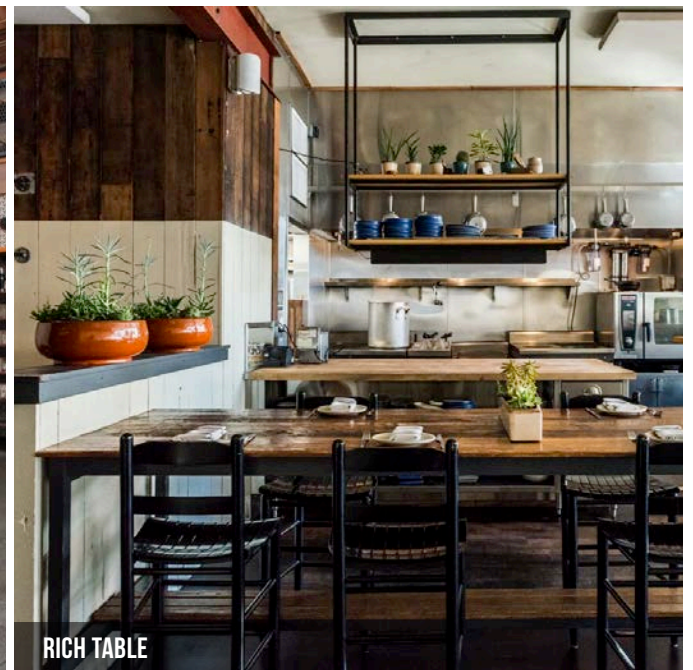
ESPETUS CHURRASCARIA



CALIFORNIOS



SIGHTGLASS COFFEE



RICH TABLE

# 1458 HOWARD STREET



**CONTACT FOR MORE  
INFORMATION**

**JOHN-CLAY MORRIS** DRE # 01263079

D 415.539.1112 C 415.517.5400 | [jcmorris@tcpre.com](mailto:jcmorris@tcpre.com)

The information presented has been secured from sources we believe to be reliable but we make no representations or warranties, expressed or implied, as to the accuracy of the information. Lessee must verify the information and bears all risk for any inaccuracies.