

FOR LEASE

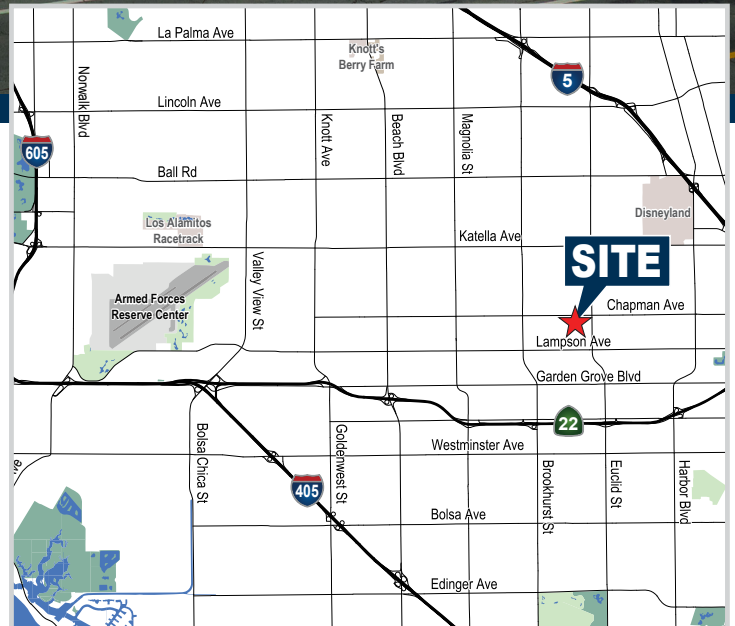
±5,460 SF INDUSTRIAL UNIT - RENOVATED

7575 CHAPMAN AVENUE | GARDEN GROVE, CA



PROPERTY FEATURES

- Recently Renovated, New Roof, New Skylights, New Ground Level Doors, New Office, New Restrooms, New Exterior Paint
- Rare Large Fenced Yard , Drive Around
- Two (2) Oversized Ground Level Doors (14' x 14')
- High Clearance: 24-Ft. Ceilings (Verify)
- Fire Sprinklered
- Great Access to 22 Freeway
- Chapman Avenue Street Frontage
- Minimal Office
- Ideal Distribution Building



**INQUIRE ABOUT PROCURING BROKER BONUS
FOR QUALIFIED TENANTS**



ERIC SMITH, SIOR

Sr. Vice President | Partner

(714) 935-2310

ESmith@voitco.com

License #01940591

Voit

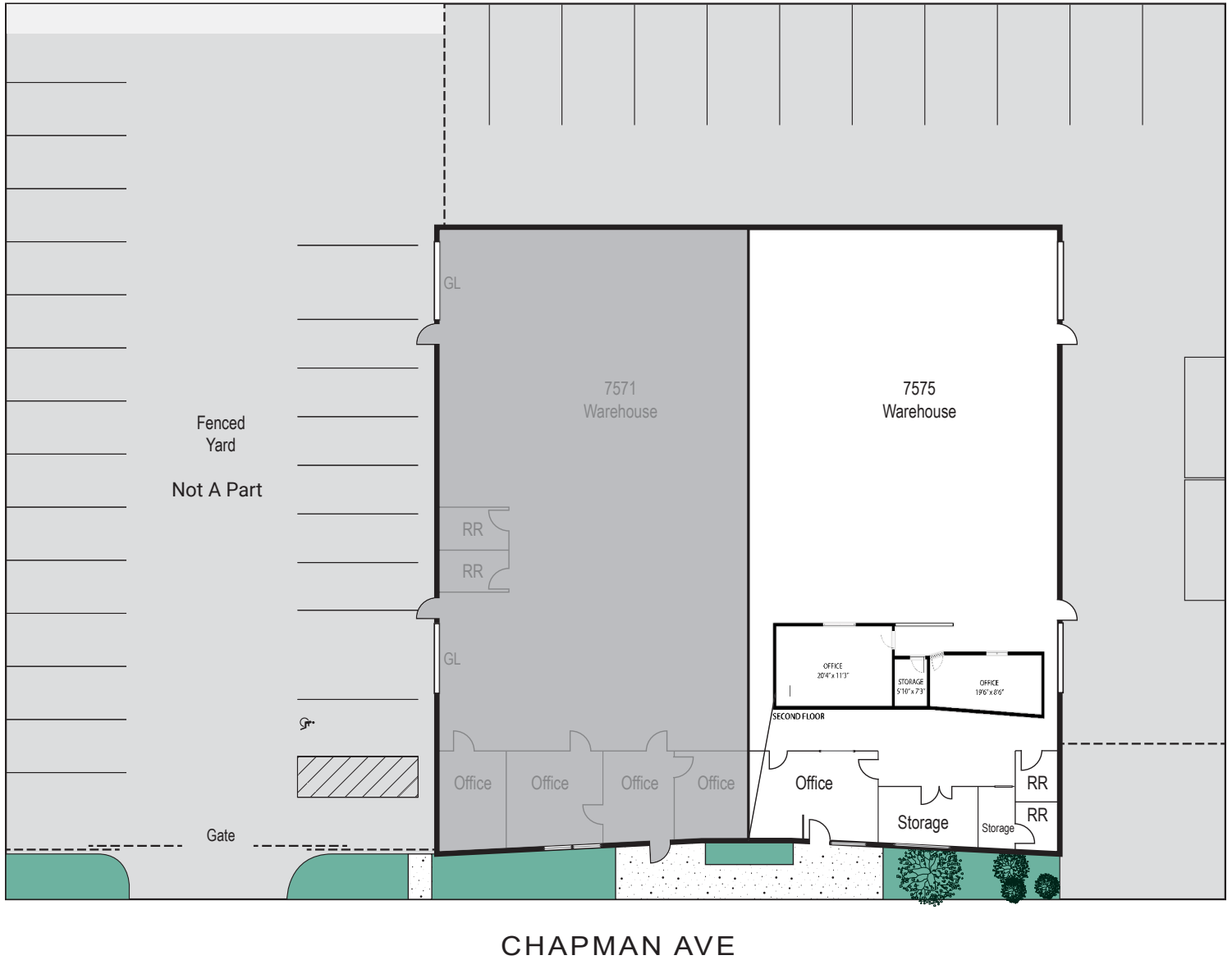
REAL ESTATE SERVICES

2400 E. Katella Avenue, Suite 750
Anaheim, CA 92806

www.EricRandolphSmith.com

The information contained herein has been obtained from sources we deem reliable. While we have no reason to doubt its accuracy, we do not guarantee it. Licensed as a Real Estate Salesperson by the DRE. ©2025 Voit Real Estate Services, Inc. All Rights Reserved. License #01991785.

SITE PLAN



ERIC SMITH, SIOR
Sr. Vice President | Partner
(714) 935-2310
ESmith@voitco.com
License #01940591

Voit
REAL ESTATE SERVICES

2400 E. Katella Avenue, Suite 750
Anaheim, CA 92806
www.EricRandolphSmith.com

The information contained herein has been obtained from sources we deem reliable. While we have no reason to doubt its accuracy, we do not guarantee it. Licensed as a Real Estate Salesperson by the DRE. ©2025 Voit Real Estate Services, Inc. All Rights Reserved. License #01991785.

7575 CHAPMAN AVENUE | GARDEN GROVE, CA



ERIC SMITH, SIOR
Sr. Vice President | Partner
(714) 935-2310
ESmith@voitco.com
License #01940591

Voit
REAL ESTATE SERVICES

2400 E. Katella Avenue, Suite 750
Anaheim, CA 92806
www.EricRandolphSmith.com

The information contained herein has been obtained from sources we deem reliable. While we have no reason to doubt its accuracy, we do not guarantee it. Licensed as a Real Estate Salesperson by the DRE. ©2025 Voit Real Estate Services, Inc. All Rights Reserved. License #01991785.