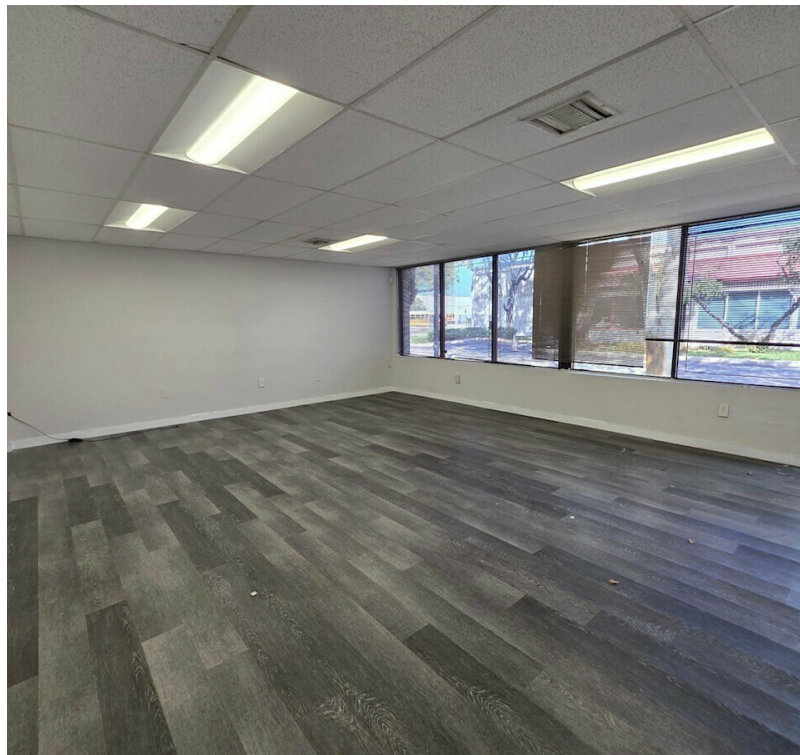


COPANS INDUSTRIAL PARK

1901-1945 WEST COPANS ROAD, POMPANO BEACH, FL 33064

1939 W COPANS ROAD



1939 SPACE HIGHLIGHTS

- 4,467 SF
- End Cap Unit
- 495 SF air conditioned office
- 18' clear ceiling in warehouse
- 12' x 14' grade level overhead door
- Storage
- 2 private restrooms
- Close to I-95



NATALIE DELISLE

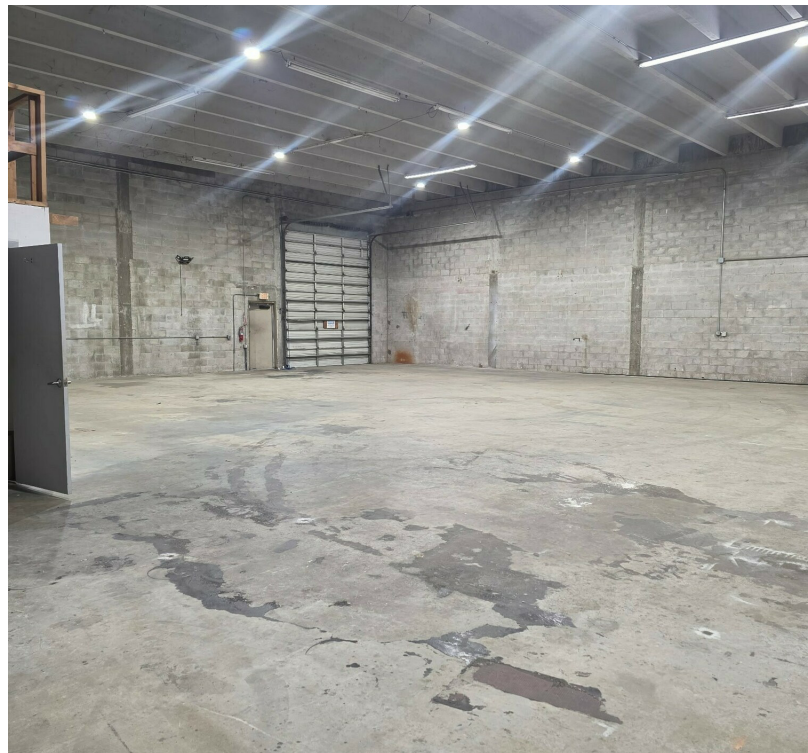
Property Manager / Sales Associate
954.678.2362
natalie@levyai.com



COPANS INDUSTRIAL PARK

1901-1945 WEST COPANS ROAD, POMPANO BEACH, FL 33064

1939 W COPANS RD ADDITIONAL PHOTOS



NATALIE DELISLE

Property Manager / Sales Associate
954.678.2362
natalie@levyai.com

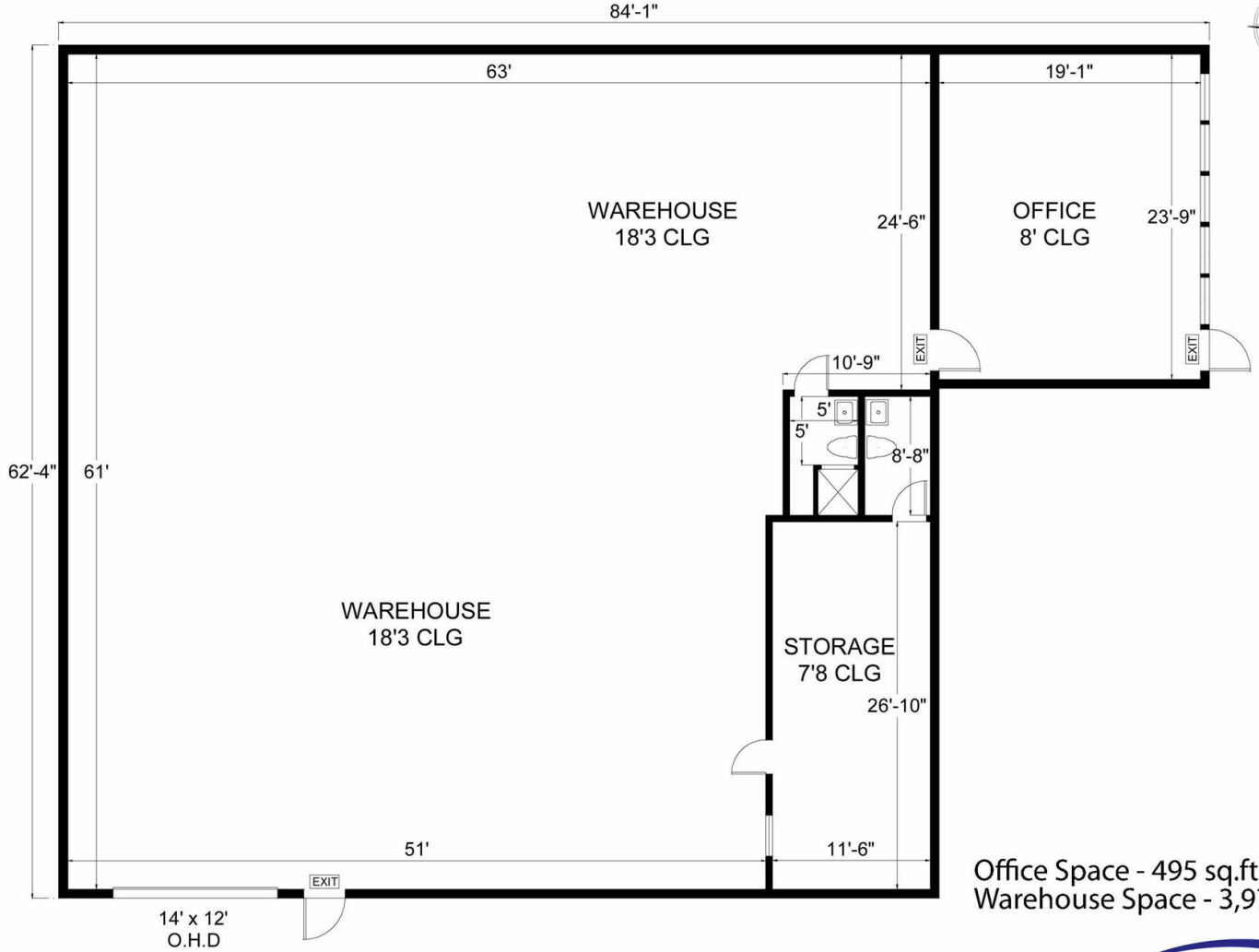


COPANS INDUSTRIAL PARK

1901-1945 WEST COPANS ROAD, POMPANO BEACH, FL 33064

1939 W COPANS RD FLOOR PLAN

1939 W Copans Road | Pompano Beach, FL 33064



Office Space - 495 sq.ft.
Warehouse Space - 3,972 sq.ft.

4,467 Total Rentable Sq. Ft.
www.LevyRealtyAdvisors.com

NATALIE DELISLE

Property Manager / Sales Associate
954.678.2362
natalie@levyai.com

