



8116 DEERING AVE, CANOGA PARK, CA 91304

INDUSTRIAL SPACE



FOR LEASE

OFFERING MEMORANDUM



● SITE DESCRIPTION

IKON Properties is proud to present an industrial opportunity at 8116 Deering Ave, Canoga Park, CA 91304, located at 8128 Deering Ave in Canoga Park, CA 91304, this well-positioned industrial asset features a versatile multi-unit configuration ideally suited for owner-users or small-bay investors. Each separately demised unit is fully self-contained, offering its own ground-level loading door, functional warehouse floor, dedicated office space, and private restroom, providing efficient, independent operations for a variety of users.

The property showcases functional warehouse layouts with clear-span floor areas designed to accommodate a wide range of industrial uses, complemented by built-in office components that support seamless front-office and back-of-house workflows. Flexible occupancy options allow for single or multiple tenants, enhancing long-term adaptability and investment appeal. Strategically located within an established Canoga Park industrial corridor, the property benefits from convenient access to nearby commercial corridors and major thoroughfares, supporting strong connectivity throughout the San Fernando Valley.

*All information is deemed reliable but not guaranteed, should be independently verified, and is not legal, financial, or investment advice.

PROPERTY TYPE

Industrial

ZONING

LAM2

YEAR BUILT

1968

AVAILABLE SPACES

8116 Deering Ave - 3,008 SF

8128 Deering Ave - 1,831 SF

8132 Deering Ave - 2,003 SF



PROPERTY HIGHLIGHTS

- Each separately demised unit includes its own loading door, warehouse floor, office space, and private restroom, offering fully self-contained functionality
- Multi-Unit Industrial Configuration, ideal for owner-users or small-bay investors
- Functional Warehouse Layouts with clear-span floor areas suited for a variety of industrial uses
- Built-In Office Components allowing efficient front-office and back-of-house operations
- Flexible Occupancy Options accommodating single or multiple tenants
- Well-Located Industrial Asset with convenient access to nearby commercial corridors and major thoroughfares.

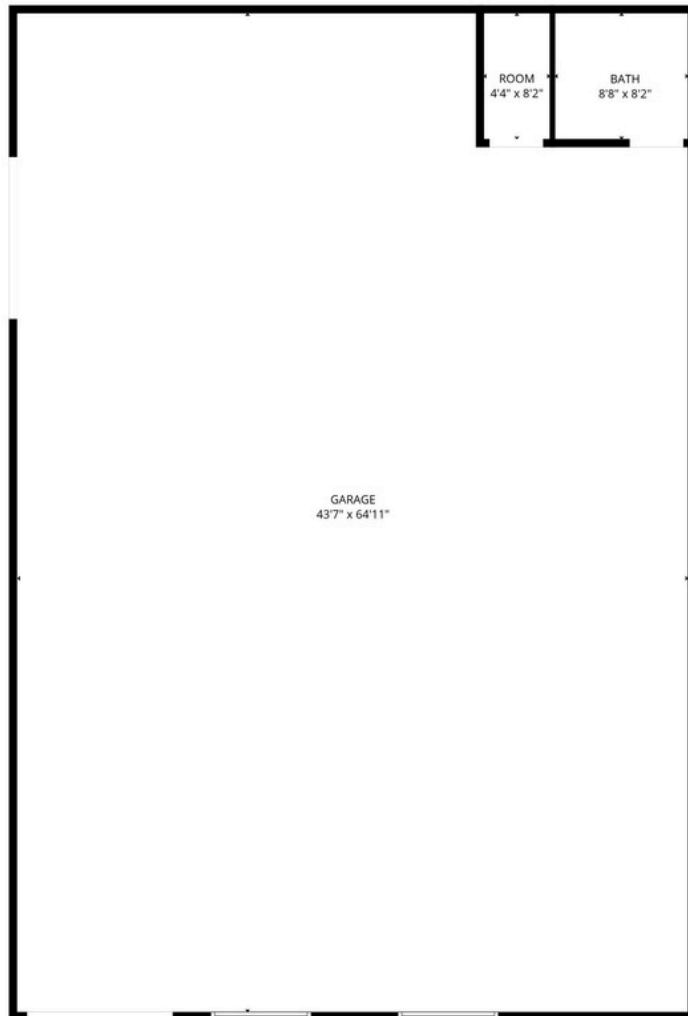


*All information is deemed reliable but not guaranteed, should be independently verified, and is not legal, financial, or investment advice.

FLOOR PLAN

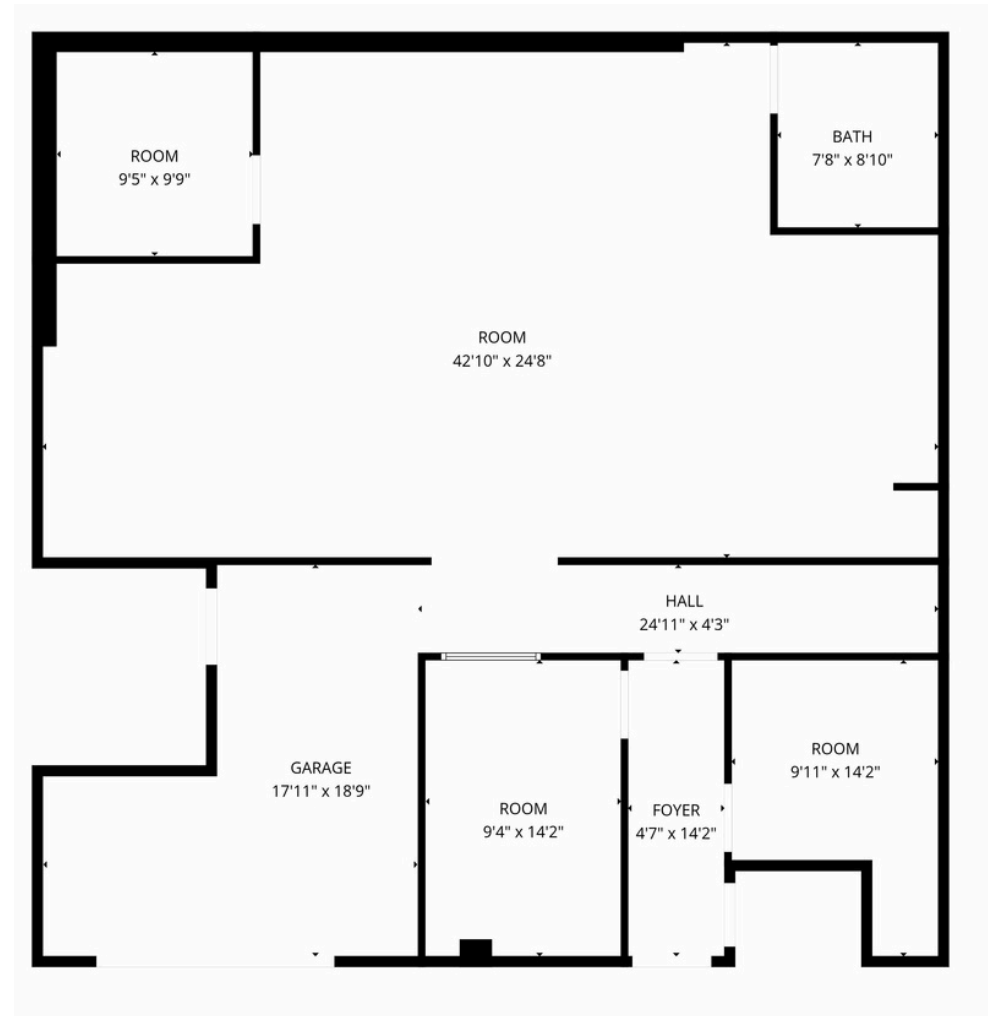
Measurements are deemed highly reliable but not guaranteed.

8116



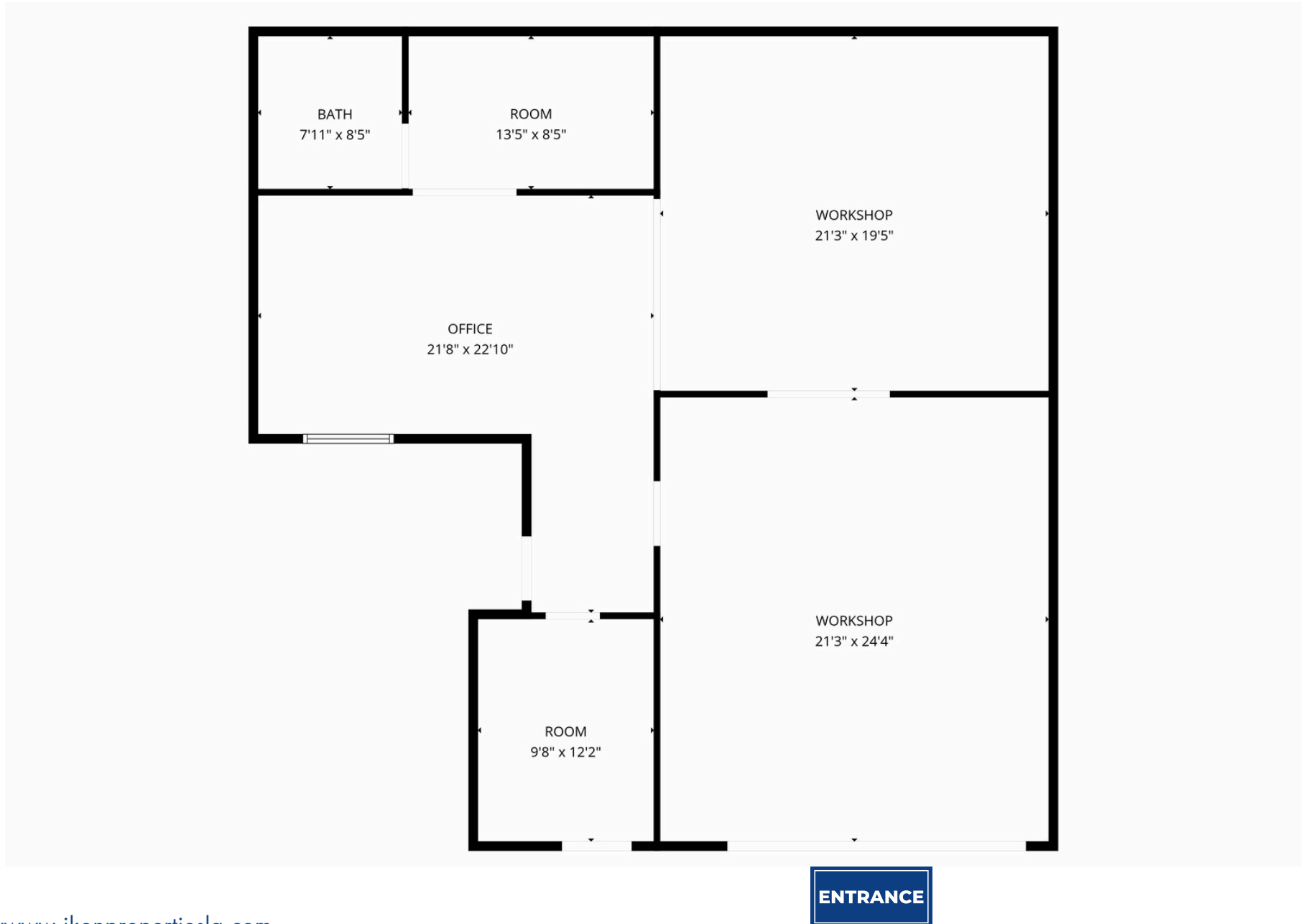
ENTRANCE

8128

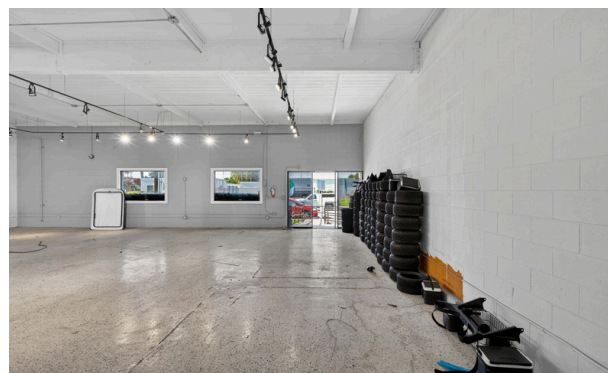


ENTRANCE

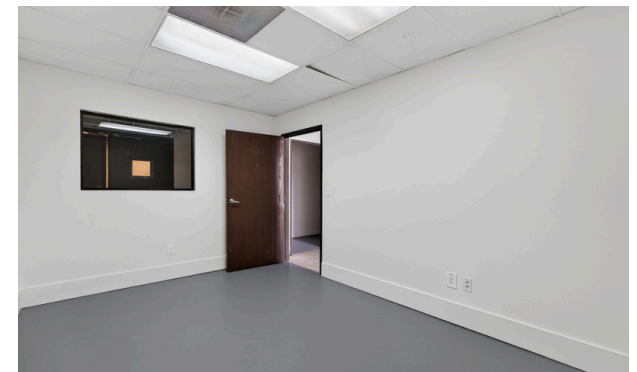
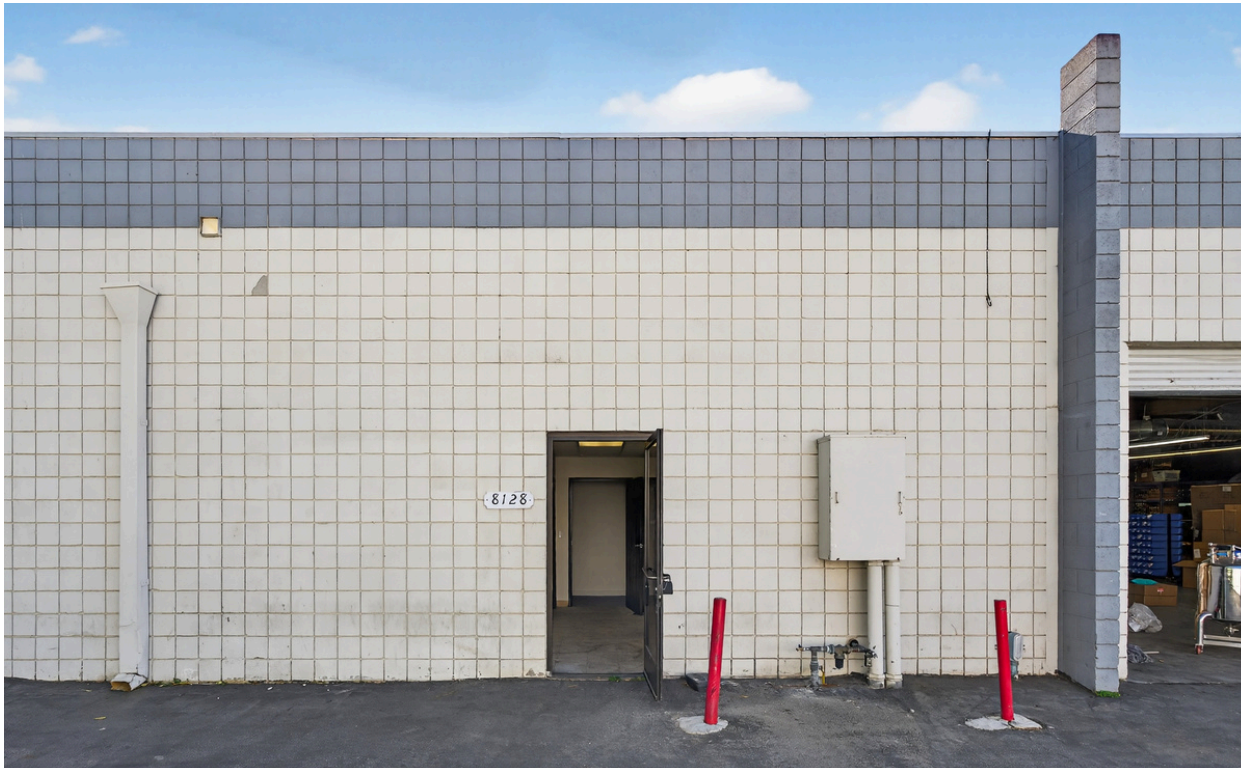
8132



8116 DEERING AVE



8128 DEERING AVE



8132 DEERING AVE



RETAIL MAP



AERIAL MAP

LOCATED JUST SOUTH OF ROSCOE BOULEVARD AND NEAR SHERMAN WAY, THIS PROPERTY IS SITUATED WITHIN THE HEART OF CANOGA PARK'S ESTABLISHED INDUSTRIAL CORRIDOR. THE SITE OFFERS CONVENIENT ACCESS TO THE U.S. 101 AND 118 FREEWAYS, PROVIDING STRONG CONNECTIVITY THROUGHOUT THE SAN FERNANDO VALLEY AND GREATER LOS ANGELES REGION. THE SURROUNDING AREA IS CHARACTERIZED BY A DIVERSE MIX OF LIGHT INDUSTRIAL, WAREHOUSE, MANUFACTURING, AND SERVICE-ORIENTED BUSINESSES, MAKING IT A WELL-TRAFFICKED AND FUNCTIONAL COMMERCIAL ENVIRONMENT IDEAL FOR A WIDE RANGE OF INDUSTRIAL AND FLEX USES.





Category	1 Mile	3 Mile	5 Mile
2024 Total Population	45,253	224,810	452,652
2029 Population	44,179	220,102	441,414
Pop Growth 2024-2029	-2.37%	-2.09%	-2.48%
Average Age	37.60	39.90	40.80
2024 Total Households	13,854	77,383	157,460
HH Growth 2024-2029	-2.58%	-2.09%	-2.61%
Median Household Income	\$64,096	\$83,290	\$89,880
Avg Household Size	3.10	2.80	2.80
2024 Avg HH Vehicles	2	2	2
Median Home Value	\$661,435	\$728,358	\$788,067
Median Year Built	1973	1973	1971



The information contained in the following listing is proprietary and strictly confidential. It is intended to be reviewed only by the party receiving it from IKON Properties and it should not be made available to any other person or entity without the written consent of IKON Properties. By taking possession of and reviewing the information contained herein the recipient agrees to hold and treat all such information in the strictest confidence. The recipient further agrees that the recipient will not photocopy or duplicate any part of the email content. If you have no interest in the subject property, please promptly delete this email. This email has been prepared to provide summary, unverified financial and physical information to prospective purchasers, and to establish only a preliminary level of interest in the subject property. The information contained herein is not a substitute for a thorough due diligence investigation. IKON Properties has not made any investigation, and makes no warranty or representation with respect to the income or expenses for the subject property, the future projected financial performance of the property, the size and square footage of the property and improvements, the presence or absence of contaminating substances, PCBs or asbestos, the compliance with local, state and federal regulations, the physical condition of the improvements thereon, or financial condition or business prospects of any tenant, or any tenant's plans or intentions to continue its occupancy of the subject property. The information contained in this offering memorandum has been obtained from sources we believe are reliable; however, IKON Properties has not verified, and will not verify, any of the information contained herein, nor has IKON Properties conducted any investigation regarding these matters and makes no warranty or representation whatsoever regarding the accuracy or completeness of the information provided. All potential buyers must take appropriate measures to verify all of the information set forth herein. Prospective buyers shall be responsible for their costs and expenses of investigating the subject property.





BLAS FERNANDEZ
DIRECTOR, COMMERCIAL INVESTMENTS

818.319.9191
blas@ikonpropertiesla.com
ikonpropertiesla.com
LIC NO. 02012036



BRIAN VU
SR. INVESTMENT ASSOCIATE

818.913.8819
brian@ikonpropertiesla.com
ikonpropertiesla.com
LIC NO. 02181861