

# 2634 PLEASANT STREET

- St. Jarlath Parish
- Oakland, CA
- 24,847 rsf (BOMA)
- Negotiable Term Length



DIOCESSE OF  
OAKLAND



# SCHOOL AVAILABLE FOR LEASE

 **LEE &  
ASSOCIATES**  
COMMERCIAL REAL ESTATE SERVICES

DAVID KLEIN  
(415) 828-2188  
dklein@lee-associates.com  
License ID# 00790730

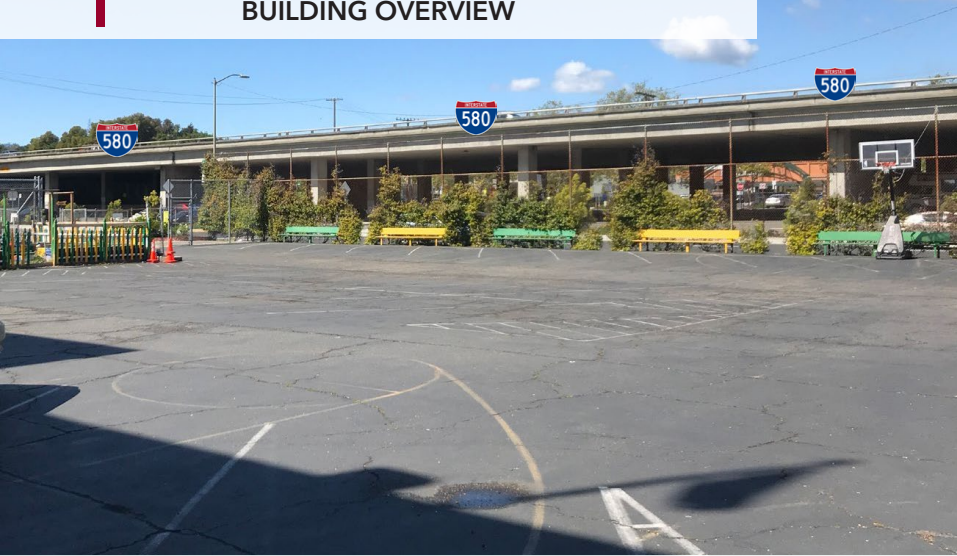
ELIJAH HODGES  
(925) 528-9972  
ehodges@lee-associates.com  
License ID# 02208943

 **Kidder  
Mathews**

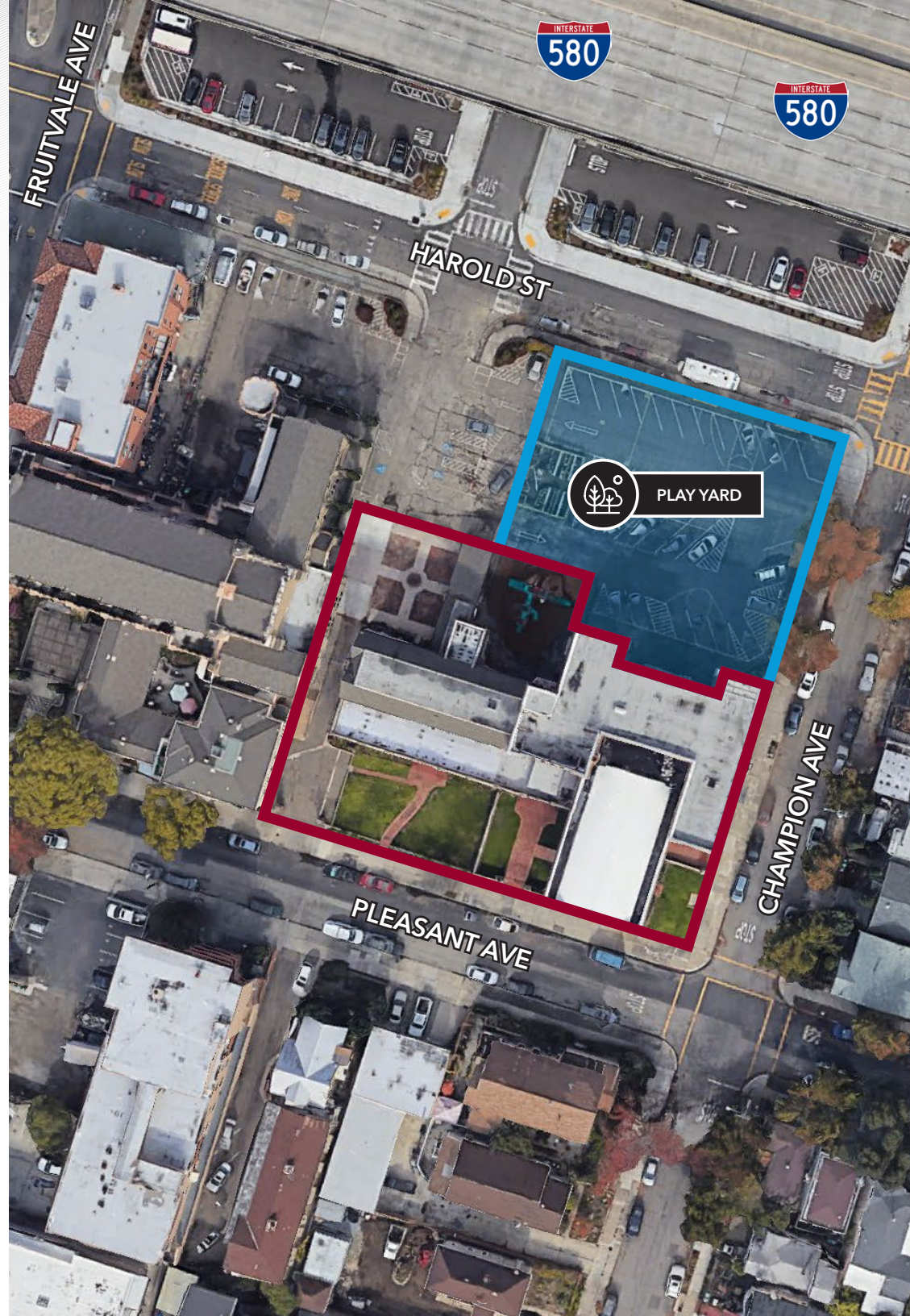
KEVIN PON  
(415) 577-2796  
kevin.pon@kidder.com  
License ID# 02227662

2634 PLEASANT STREET | OAKLAND, CA

BUILDING OVERVIEW



PLAY YARD



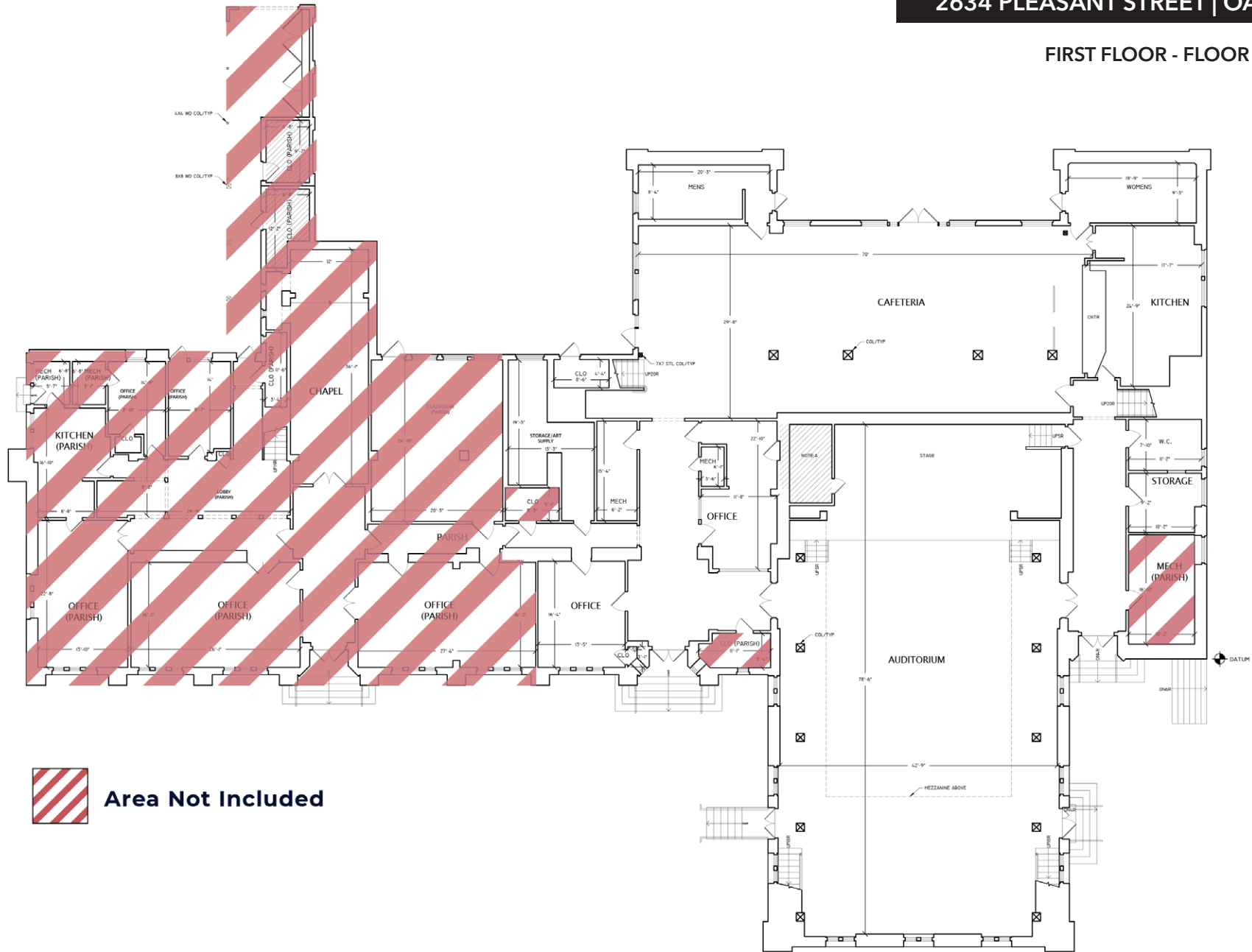


2634 PLEASANT STREET | OAKLAND, CA

FIRST FLOOR



FIRST FLOOR - FLOOR PLAN



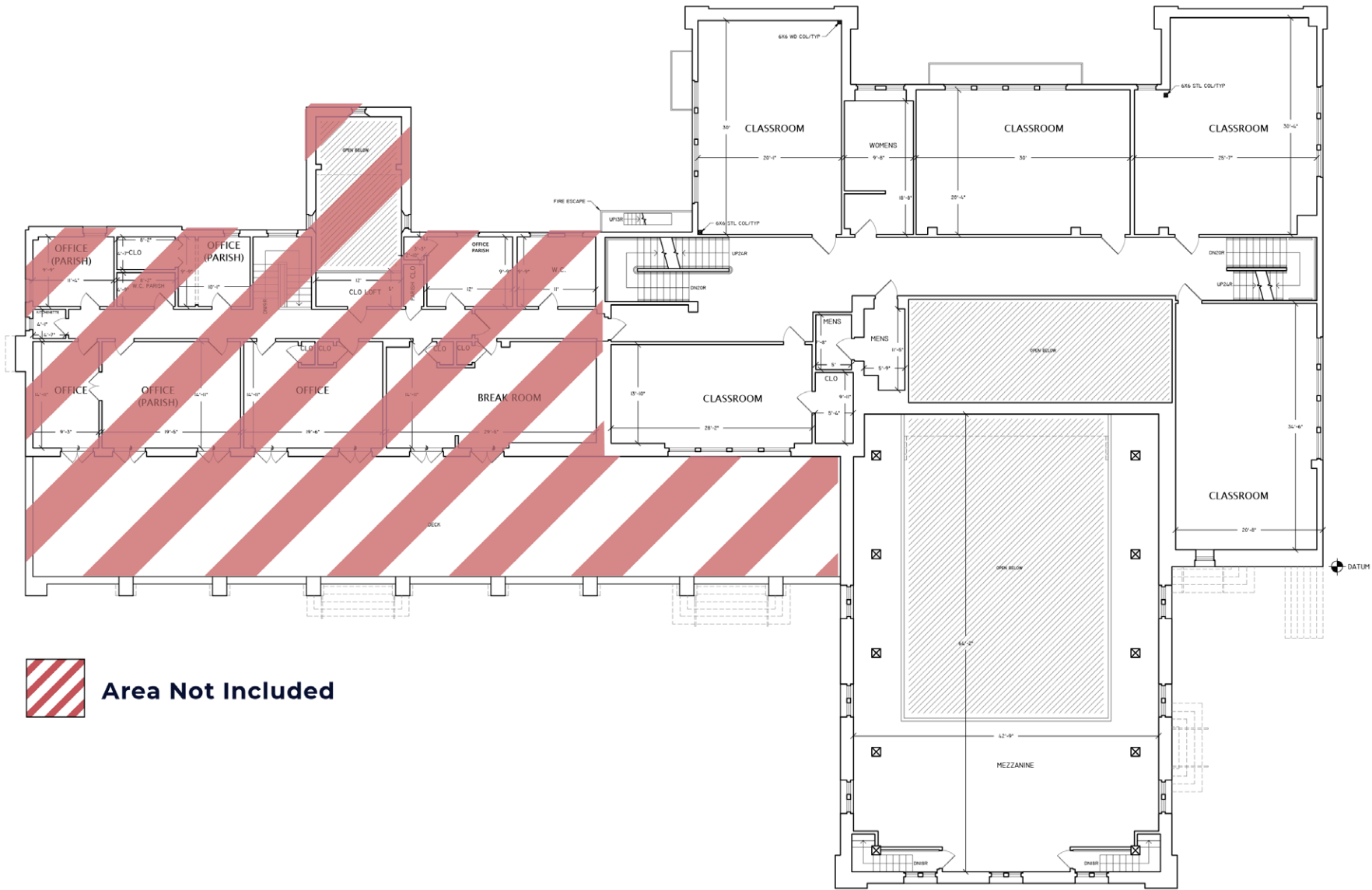
**Area Not Included**

2634 PLEASANT STREET | OAKLAND, CA

SECOND FLOOR



SECOND FLOOR - FLOOR PLAN

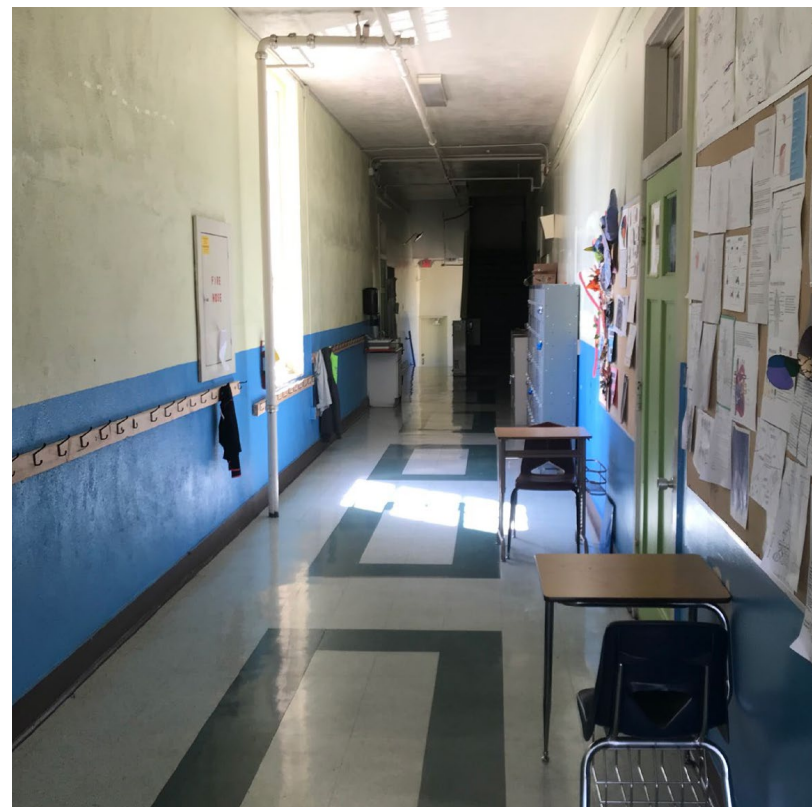
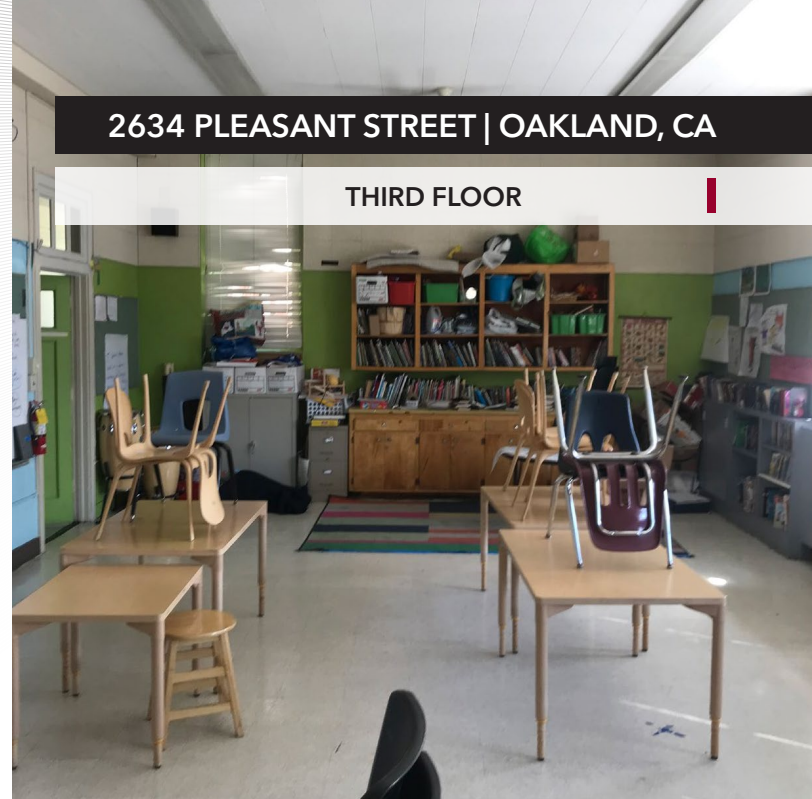


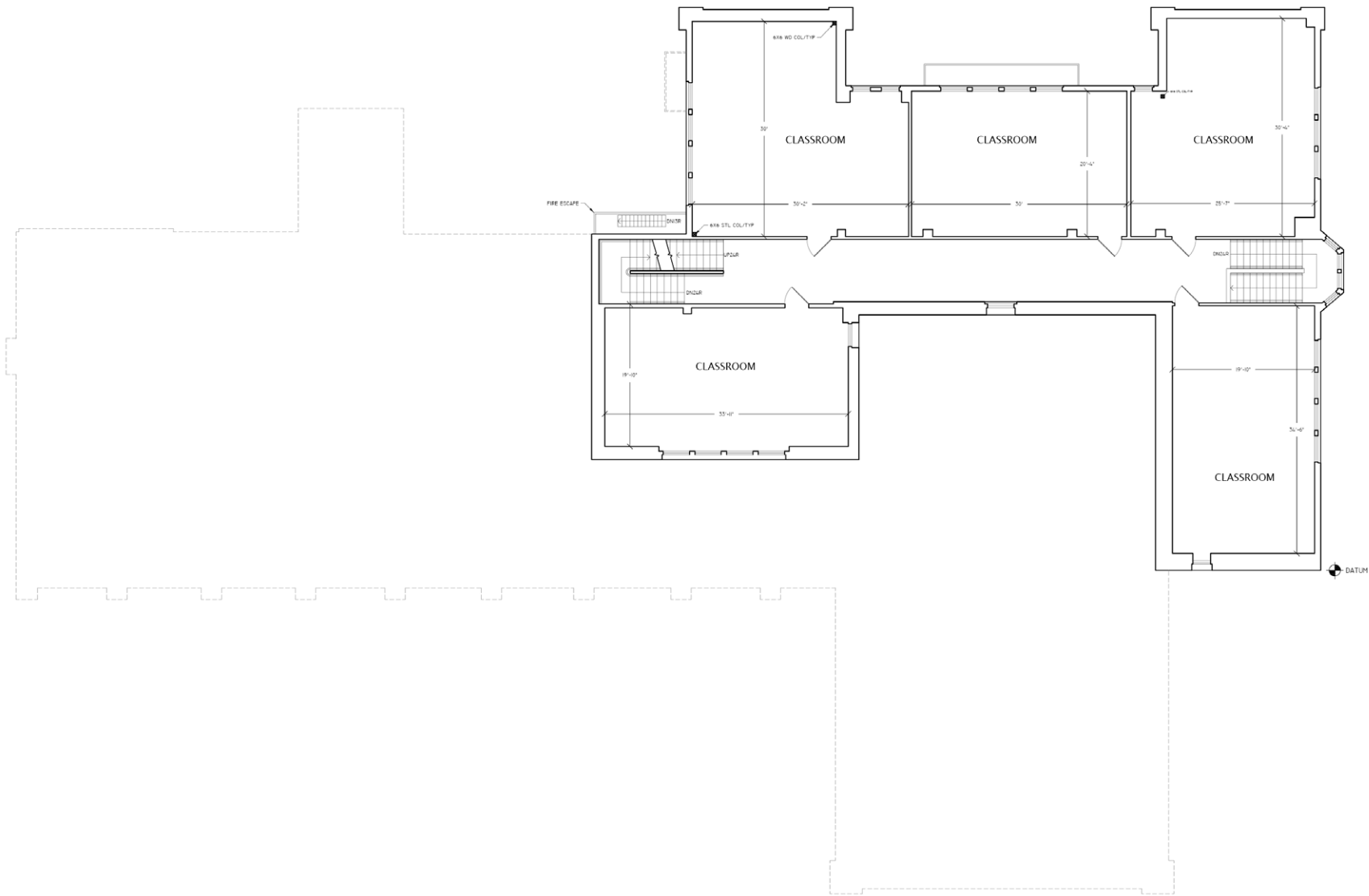
 **Area Not Included**



2634 PLEASANT STREET | OAKLAND, CA

THIRD FLOOR

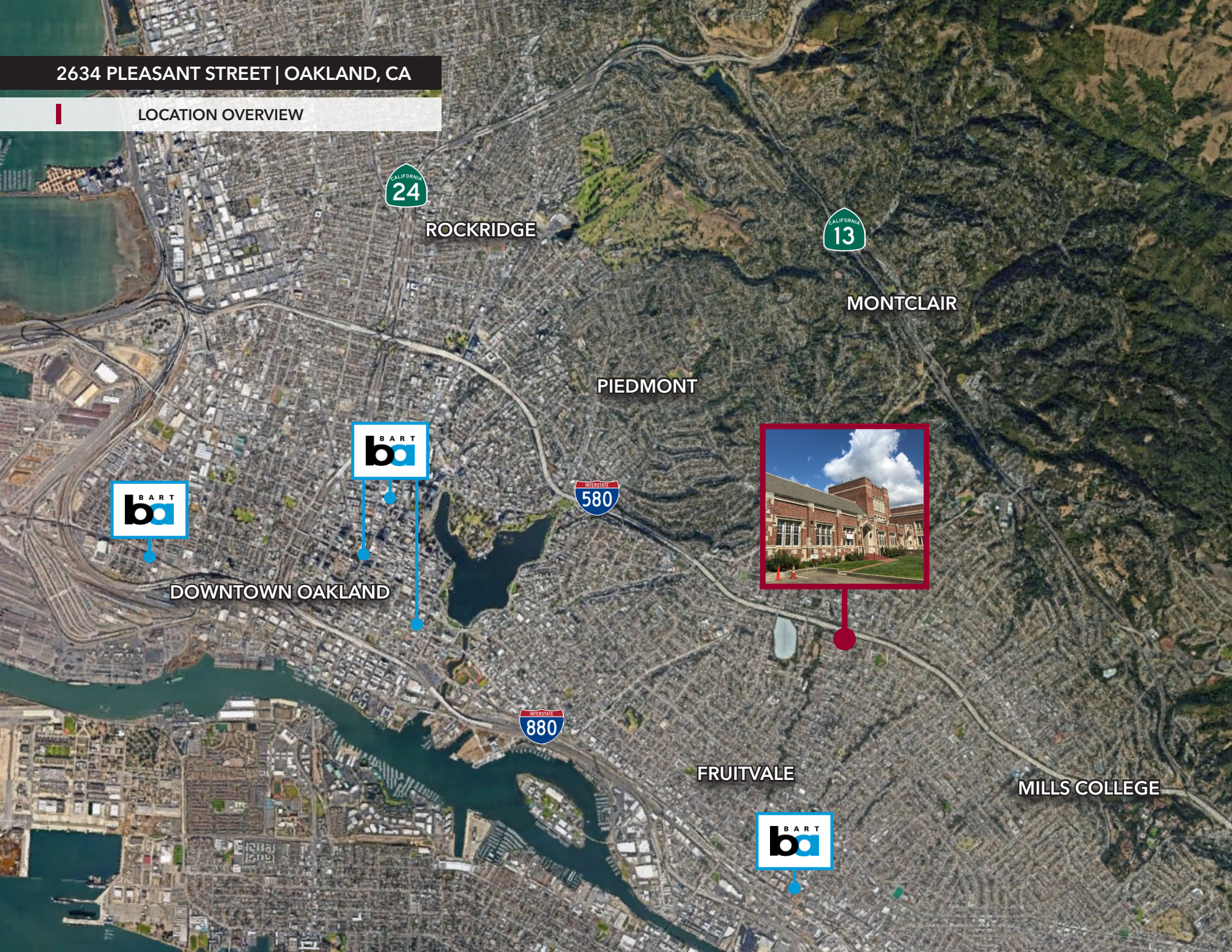






2634 PLEASANT STREET | OAKLAND, CA

LOCATION OVERVIEW



ROCKRIDGE



MONTCLAIR

PIEDMONT



DOWNTOWN OAKLAND



FRUITVALE

MILLS COLLEGE



# 2634 PLEASANT STREET | OAKLAND, CA



 **LEE &  
ASSOCIATES**  
COMMERCIAL REAL ESTATE SERVICES

DAVID KLEIN  
Executive Vice President  
(415) 828-2188  
dklein@lee-associates.com  
License ID# 00790730

ELIJAH HODGES  
Associate  
(925) 528-9972  
ehodges@lee-associates.com  
License ID# 02208943

 **Kidder  
Mathews**

KEVIN PON  
Investment Broker  
(415) 577-2796  
kevin.pon@kidder.com  
License ID# 02227662