



14207 128A Avenue, Edmonton

Second Floor Office Space

 **PROPERTY
DETAILS**

Address:	14207 128A Avenue, Edmonton
Zoning:	IM (Medium Industrial)
Size:	700 SF (+/-)
Gross Rent:	\$1,400 / month (includes all utilities)
Possession:	November 1, 2024

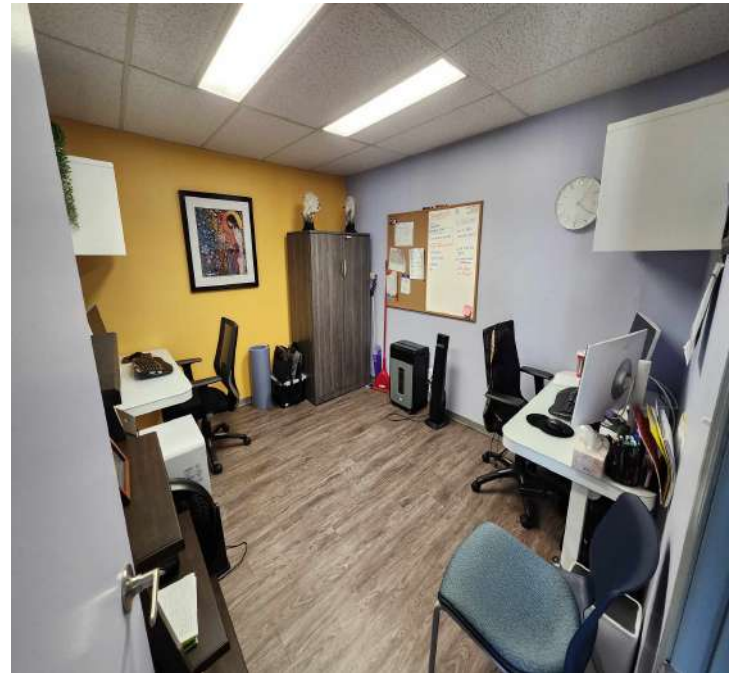
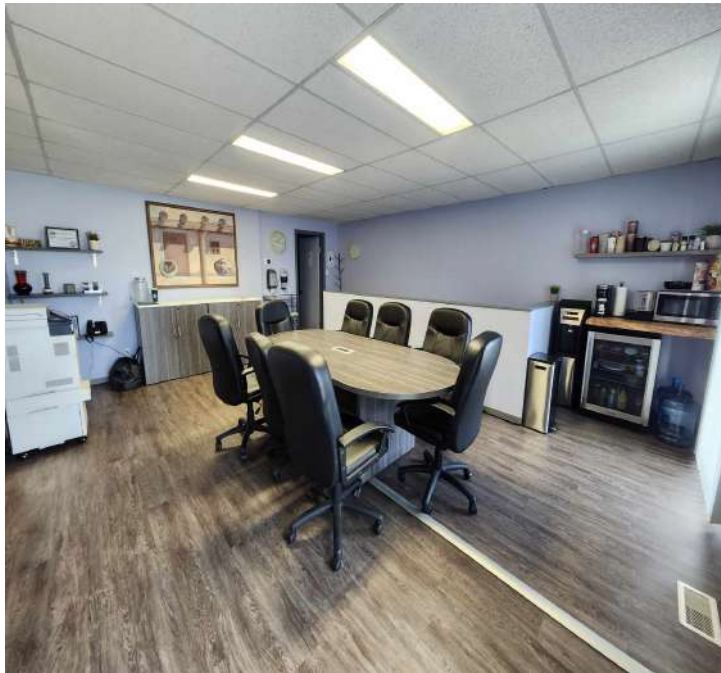
 **PROPERTY
HIGHLIGHTS**

- Bright, clean office space, with large floor to ceiling windows
- Ample Parking available
- 2 Large offices, open area, and washroom
- Easy access to St. Albert Trail and Yellowhead Highway



Colton Colquhoun
Associate Broker
780-830-9120
colton@aicrecommercial.com

Jim McKinnon
Partner / Associate
780-719-8183
jim@aicrecommercial.com



Colton Colquhoun
Associate Broker
780-830-9120
colton@aicrecommercial.com

Jim McKinnon
Partner / Associate
780-719-8183
jim@aicrecommercial.com



PROPERTY LOCATION

14207 128A Avenue, Edmonton

Neighbourhood features:



RESTAURANTS



TRANSIT



HWY ACCESS



LOCATION FEATURES

- Excellent access to major transportation routes such as Yellowhead Trail and St. Albert Trail
- Located in the well-established Northwest Edmonton industrial area
- Close proximity to commercial services, restaurants, and retail centers
- Convenient access to public transit for employees and clients
- Growing industrial and business community surrounding the area
- Minutes away from the Edmonton City Centre and key infrastructure



Colton Colquhoun
Associate Broker
780-830-9120
colton@aicrecommercial.com

Jim McKinnon
Partner / Associate
780-719-8183
jim@aicrecommercial.com

Disclaimer: This disclaimer applies to AICRE COMMERCIAL. The information set out, including, without limitation, any projections, images, opinions, estimates or assumptions obtained from third parties has not been verified, and AICRE COMMERCIAL does not guarantee or represent the accuracy or completeness of the information. The recipient of the information should take steps they deem necessary to verify