

# 1252 LA LOMA CIRCLE




## ANAHEIM, CA

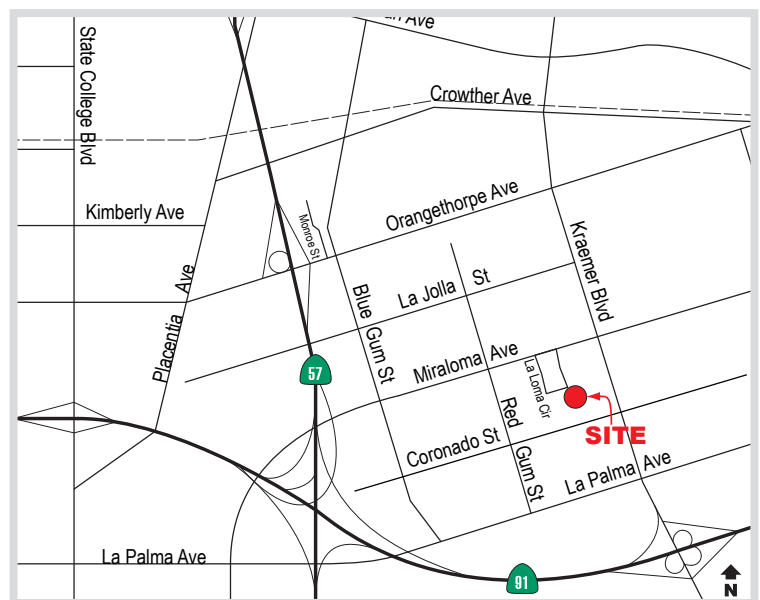
# For Lease

## ±1,584 SF



### Building Features

- Business Park Environment
- ± 400 Square Feet of Office Space
- Excellent Location in East Anaheim
- 100 Amps Power
- 14' Warehouse Clearance
- 1 Ground Level Loading Door
- Fully Fire Sprinklered
- Low City of Anaheim Utility Costs
- Located within the Anaheim Canyon Business Corridor
- Excellent Access to Riverside , Orange , & Costa Mesa  Freeways



**MICHAEL ZEHNER**  
Senior Vice President  
714.935.2328  
mczehner@voitco.com  
Lic#01917963

**REED RUTTER**  
Senior Associate  
949.933.5744  
rrutter@voitco.com  
Lic#02153762

**Voit**  
REAL ESTATE SERVICES

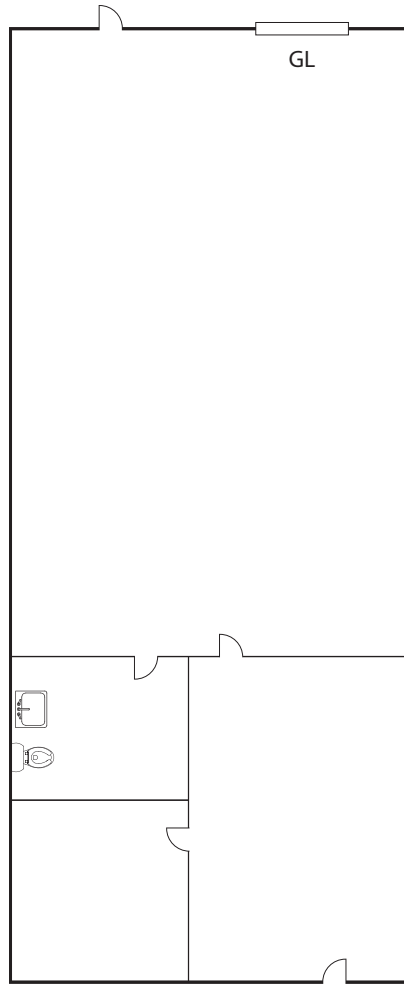
**ZEHNER HILL**  
INDUSTRIAL GROUP

# 1252 LA LOMA CIRCLE

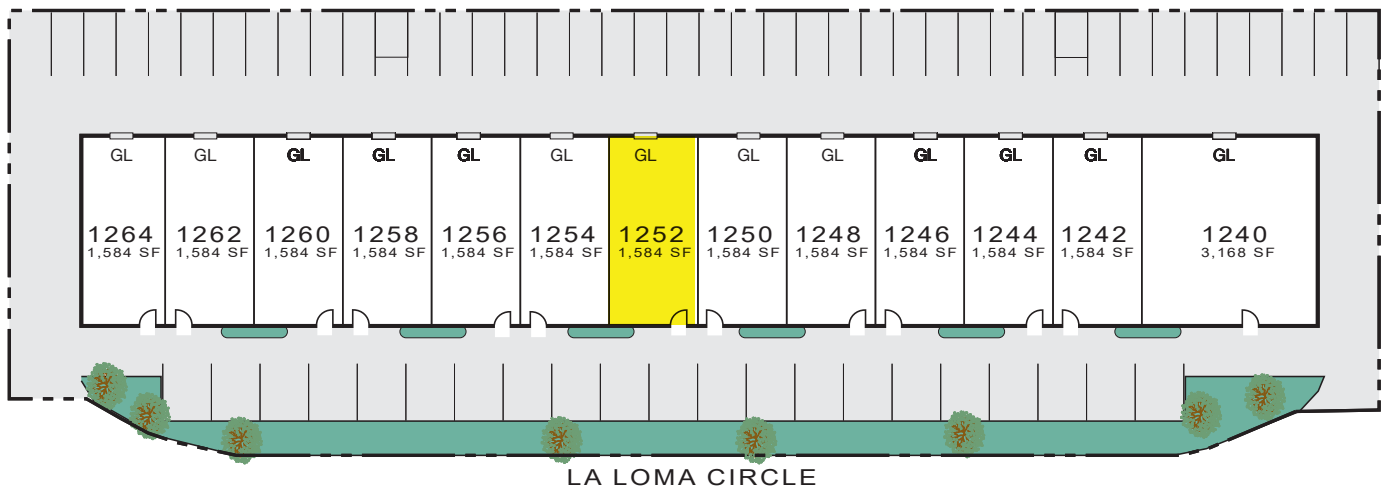
## ANAHEIM, CA

# For Lease

## ±1,584 SF



\*Floor Plan Not to Scale



**MICHAEL ZEHNER**  
Senior Vice President  
714.935.2328  
mczehner@voitco.com  
Lic#01917963

**REED RUTTER**  
Senior Associate  
949.933.5744  
rrutter@voitco.com  
Lic#02153762

**Voit**  
REAL ESTATE SERVICES

**ZEHNER HILL**  
INDUSTRIAL GROUP