



Freestanding manufacturing building



37,678 sf on 2.1 acres



Three shipping doors



Easy access to Highway 401



Matt Perco

Sales Representative

+1 226 366 9001

matt.perco@avisonyoung.com

Zack Elton

Sales Representative, Vice President

+1 226 366 9079

zack.elton@avisonyoung.com

Erik Dahm

Broker, Vice President

+1 226 366 9013

erik.dahm@avisonyoung.com



Property details

1615 Bishop Street North, Cambridge



2.13
Acres



M3
Zoning



21' foot
Clear height



Two DI and one TL
Shipping doors



600 volt/ 1,200 amp
Power service

Comments

- Located minutes away from two Highway 401 interchanges
- M-3 zoning permits various industrial uses
- Large, open bay configuration with available crane rails and one 10-ton crane
- Large employment base located within 45 minutes of the property, and available public transit to property line
- Natural light in warehouse/ manufacturing space

\$12.00 psf

Asking net rate

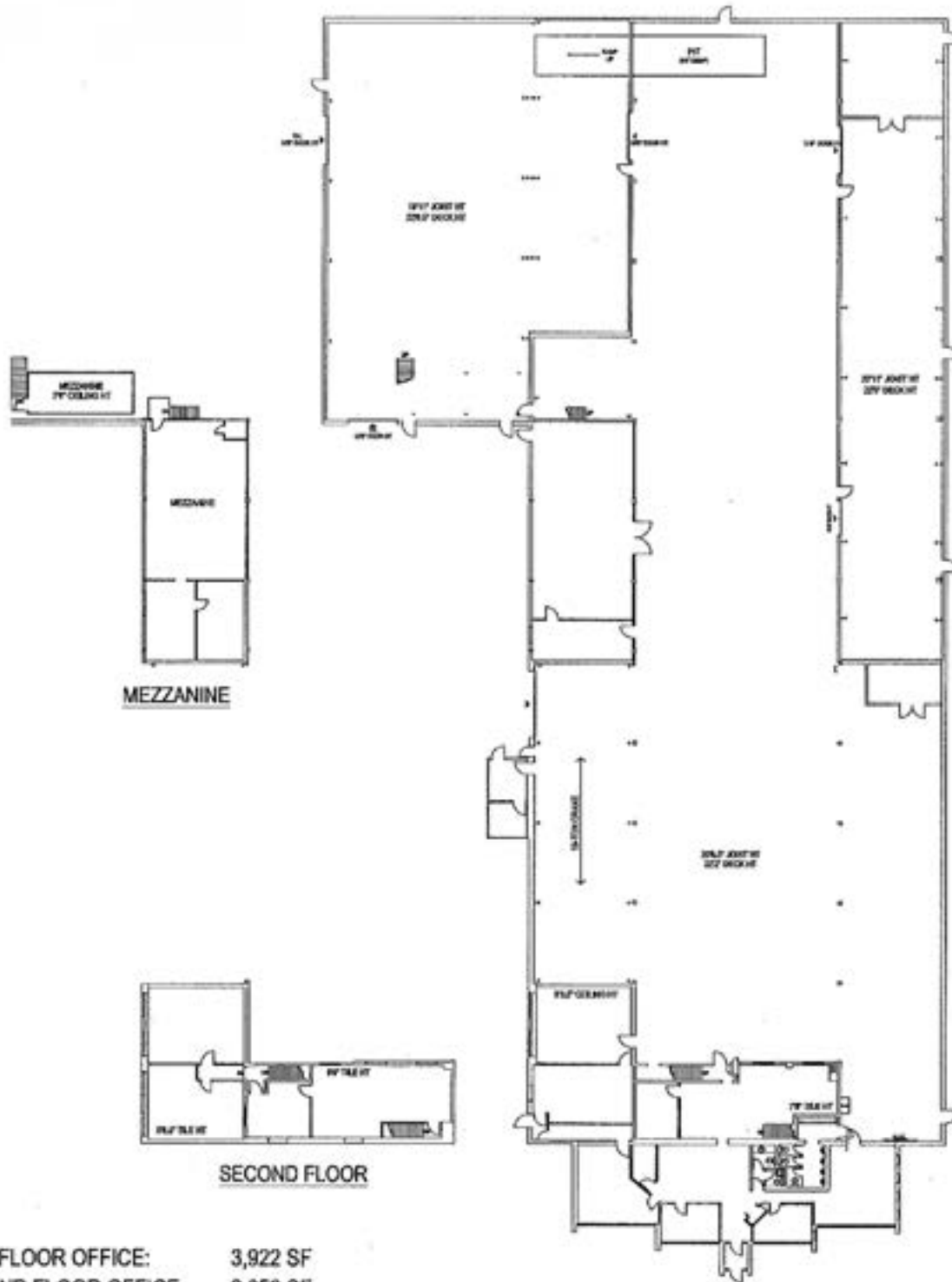
\$3.12 psf

Additional rent

Industrial for lease | 1615 Bishop Street North, Cambridge

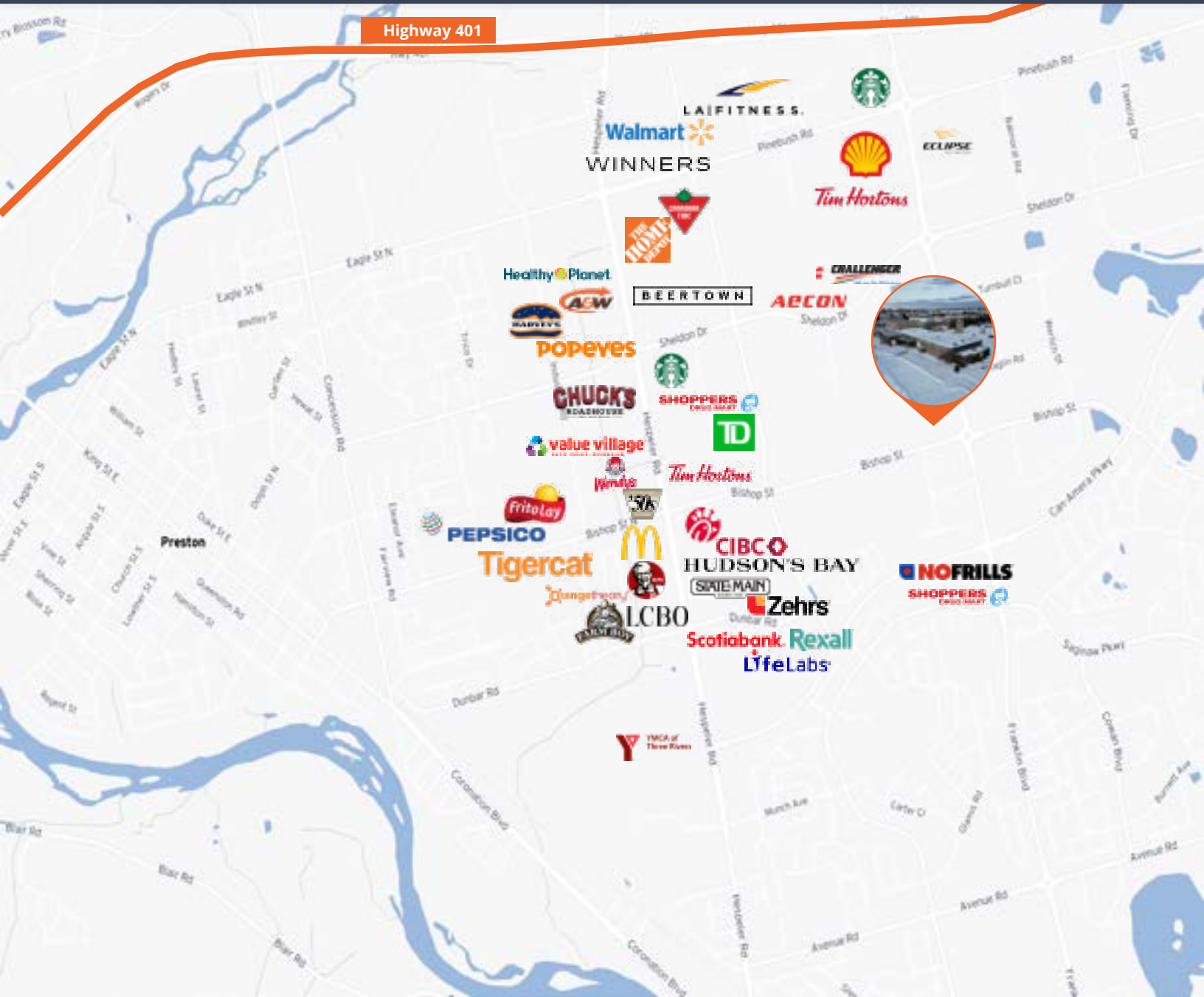


Floorplan



MAIN FLOOR OFFICE:	3,922 SF
SECOND FLOOR OFFICE:	2,052 SF
WAREHOUSE AREA:	31,704 SF
TOTAL AREA:	37,678 SF
+ 1,838 SF MEZZANINE AREA	

Industrial for lease | 1615 Bishop Street North, Cambridge



Get more information

Matt Perco

Sales Representative
+1 226 366 9001
matt.perco@avisonyoung.com

Zach Elton

Sales Representative, Vice President
+1 226 366 9079
zach.elton@avisonyoung.com

Erik Dahm

Broker, Vice President
+1 226 366 9013
erik.dahm@avisonyoung.com

Avison Young Commercial Real Estate Services, LP, Brokerage
231 Shearson Crescent, Suite 102, Cambridge ON N1T 1J5
T +1 226 366 9090 F +1 866 541 9755

**AVISON
YOUNG**

