

MURRAY
BUSINESS
CENTER

FOR LEASE

7273 MURRAY DRIVE | STOCKTON | CA



JIM MARTIN
BRE #01214270
jmartin@lee-associates.com
D 209.983.4088

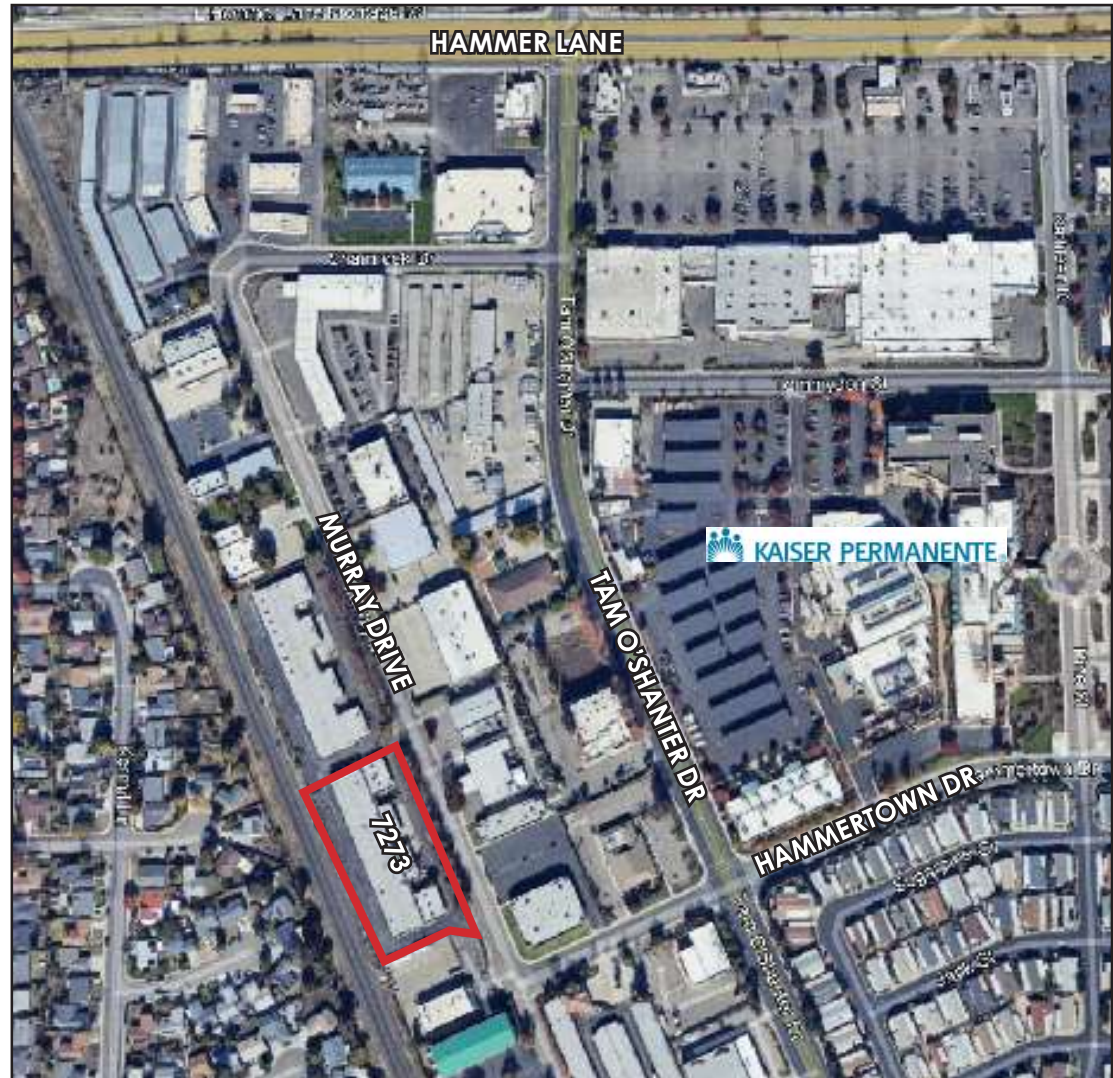
Mason Chambliss
BRE #02237204
mchambliss@lee-associates.com
C 925.336.9660
D 209.983.6831

CONTACT AGENT FOR PRICING

PROPERTY SUMMERY

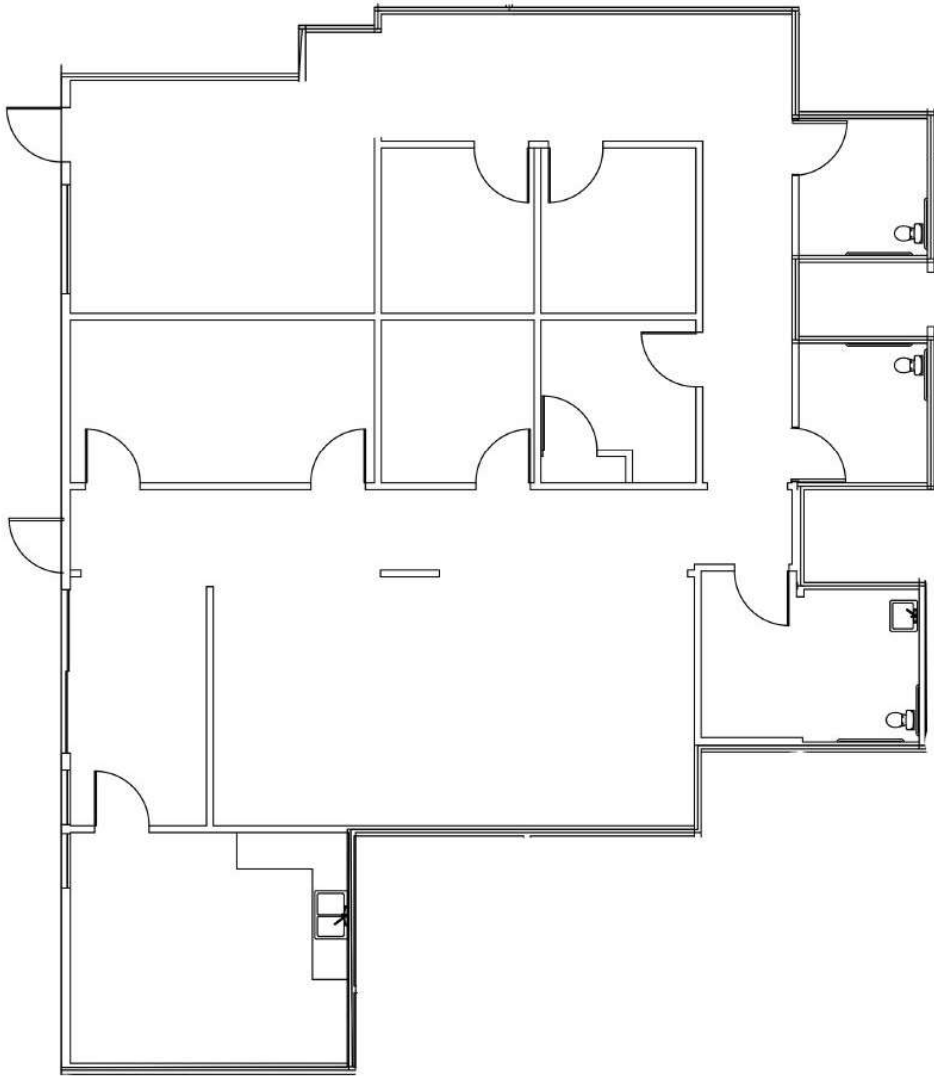
7273 MURRAY DRIVE | STOCKTON | CA

- ZONING: C-G (COMMERCIAL GENERAL)
- AMPLE PARKING
- PROFESSIONALLY MANAGED
- BUILDING SIGNAGE AVAILABLE
- GATED PERIMETER



FLOOR PLAN - UNIT 1

7273 MURRAY DRIVE | STOCKTON | CA



AVAILABLE SPACE: 2,979± SF
AVAILABLE FOR LEASE: SEPTEMBER 2026

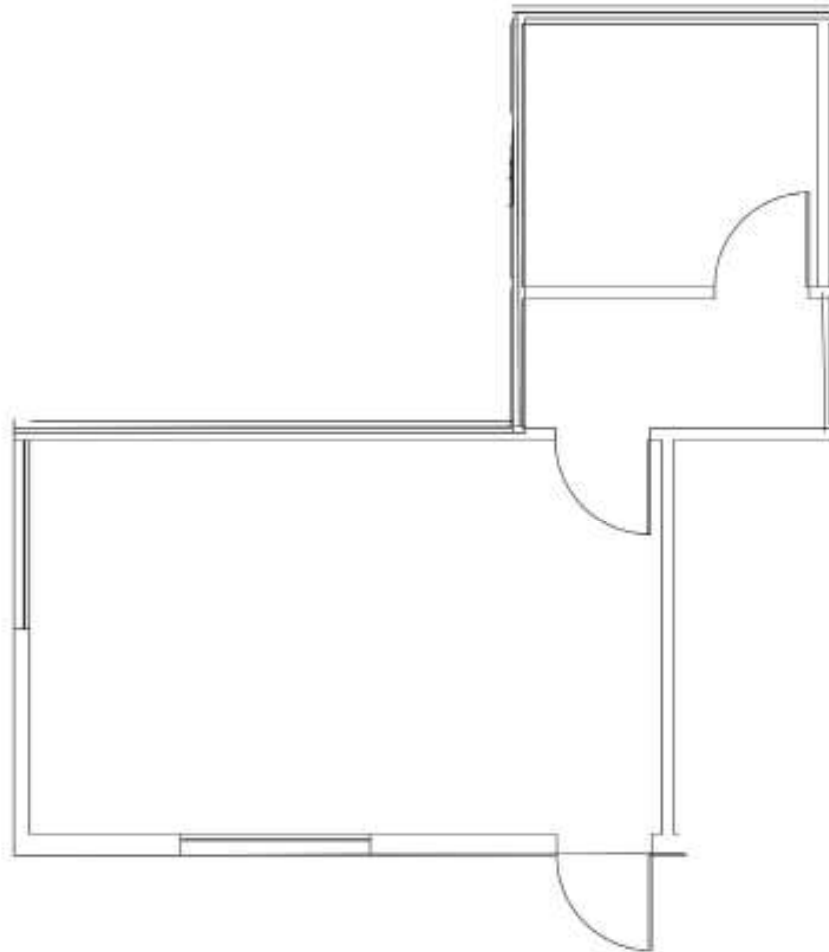
100% office/conditioned space w/ 3 restrooms inside the unit

*** DO NOT DISTURB TENANT - SHOWN BY APPOINTMENT ONLY
24 HOUR NOTICE REQUIRED BEFORE TOURING**

ASKING RENT: \$3,875 MO/GROSS (\$1.30 PSF)

FLOOR PLAN - UNIT 3

7273 MURRAY DRIVE | STOCKTON | CA



AVAILABLE SPACE: 860± SF
100% office/conditioned space

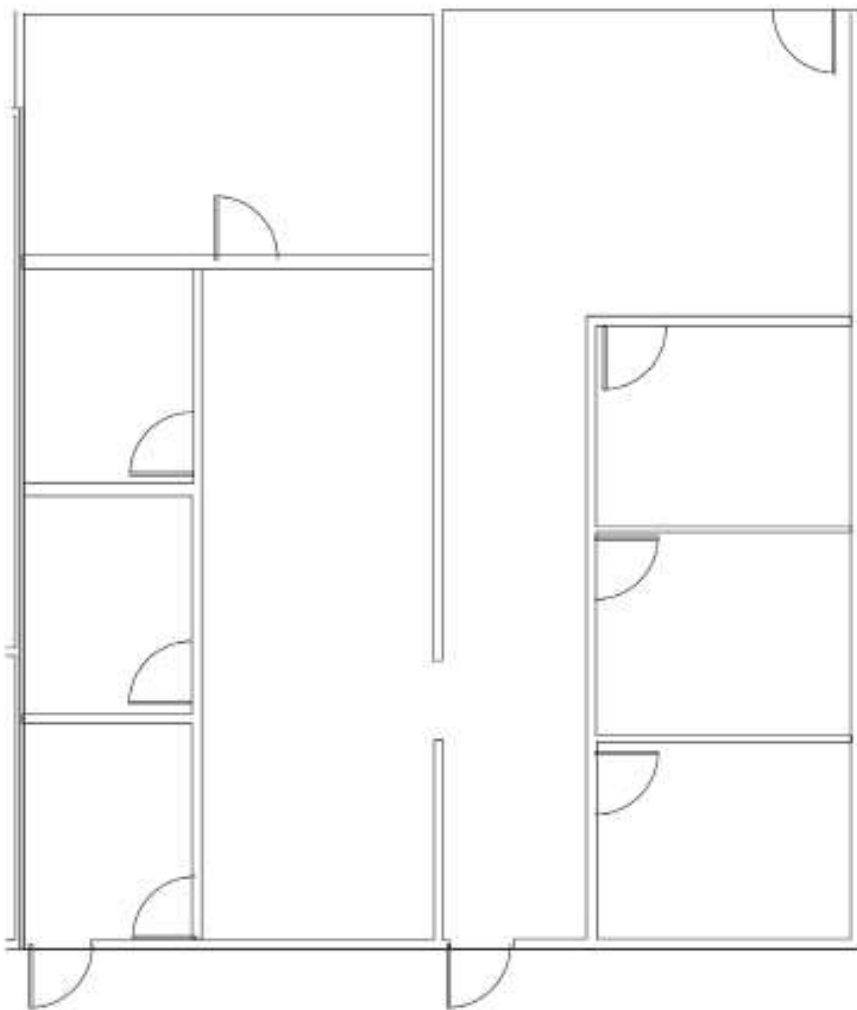
*** DO NOT DISTURB TENANT - SHOWN BY APPOINTMENT ONLY**
24 HOUR NOTICE REQUIRED BEFORE TOURING

ASKING RENT: \$1,470 MO/GROSS (\$1.65 PSF)

All information furnished regarding property for sale, rental or financing is from sources deemed reliable, but no warranty or representation is made to the accuracy thereof and same is submitted to errors, omissions, change of price, rental or other conditions prior to sale, lease or financing or withdrawal without notice. No liability of any kind is to be imposed on the broker herein.

FLOOR PLAN - UNIT 17

7273 MURRAY DRIVE | STOCKTON | CA



AVAILABLE SPACE: 1,890± SF
100% office/conditioned space

*** DO NOT DISTURB TENANT - SHOWN BY APPOINTMENT ONLY**
24 HOUR NOTICE REQUIRED BEFORE TOURING

ASKING RENT: \$2,450 MO/GROSS (\$1.30 PSF)

All information furnished regarding property for sale, rental or financing is from sources deemed reliable, but no warranty or representation is made to the accuracy thereof and same is submitted to errors, omissions, change of price, rental or other conditions prior to sale, lease or financing or withdrawal without notice. No liability of any kind is to be imposed on the broker herein.

LOCATION MAP

7273 MURRAY DRIVE | STOCKTON | CA

