



# THE REFINERY

at Domino

## AVAILABLE NOW: A TURNKEY FULL FLOOR ON THE WILLIAMSBURG WATERFRONT

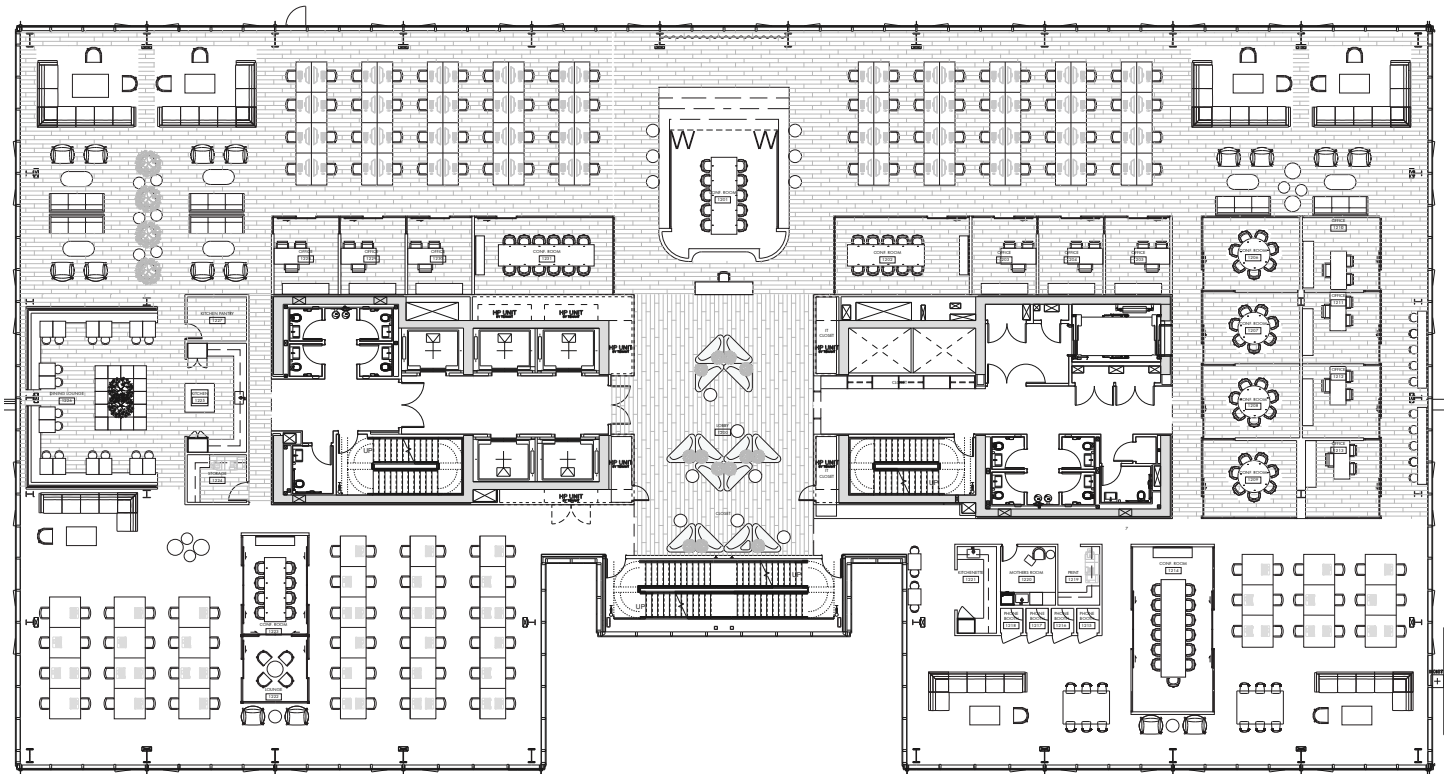
The largest turnkey pre-built in Brooklyn is for the discerning tenant who understands this iconic building is at the very center of New York's most creative neighborhood.

The 12th Floor at The Refinery is 31,414 RSF of virtually column-free space and unobstructed East River and Manhattan views. The floor has been efficiently and carefully thought out to appeal to both home-grown Brooklyn tenants or companies seeking a satellite office in close proximity to employees.

Alyssa Zahler  
Managing Director  
Alyssa@twotreesny.com

Natasha Brown  
Commercial Leasing  
Nbrown@twotreesny.com

  
TWO TREES®



**Features**

Efficient full floor design and layout

Raised platform conference room with stadium seating

One (1) large conference room

Three (3) conference rooms

Five (5) medium huddle rooms

Ten (10) offices

Four (4) telephone rooms

Two (2) high-end pantries with seating

Concrete and oak floors

Exposed 12'6" ceilings