



WILLOWICK BUSINESS PARK



CONCORD, CA



Available Suites

- ⇒ Available Immediately
- ⇒ Base Rental Rate \$1.60 per sq. ft. per month plus CAM
- ⇒ CAM charges are currently \$0.08 per month
- ⇒ 3-5 year lease term available
- ⇒ Open Parking at 3.3 spaces per 1,000 sq. ft.
- ⇒ Easy Access to I-680 and Highway 242

1110 Burnett	Fully Leased	
1130 Burnett	Suite Q - 2,206 rsf	Office / Warehouse (available 7/1/26)
1150 Burnett	Fully Leased	
1170 Burnett	Fully Leased	
1190 Burnett	Fully Leased	
2190 Meridian Park	Suite G - 1,203 rsf	Office

For more information please contact:

ROY HOWETT direct: (925) 639-7160
 BRE Lic. # 01159443 email: roy@howettproperties.com



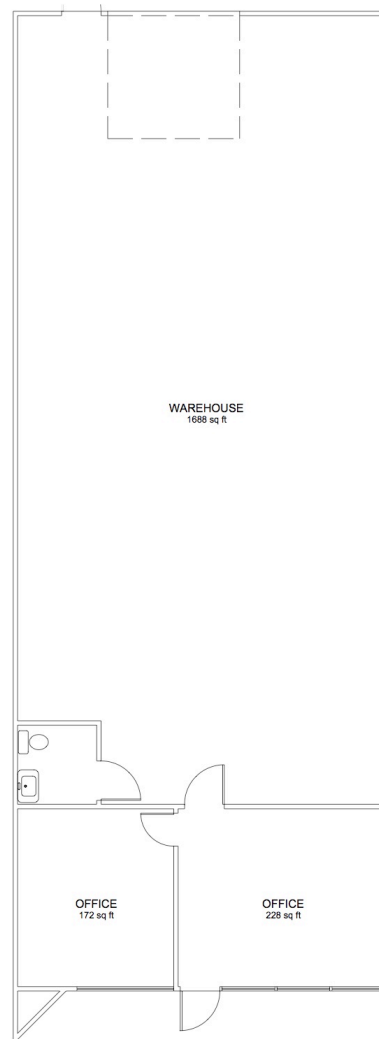
ROY HOWETT COMMERCIAL REAL ESTATE SERVICES 925.639.7160



WILLOWICK BUSINESS PARK



CONCORD, CA



1130 Burnett Ave, Suite Q
2,206 +/- Rentable sq. ft.



HOWETT PROPERTIES
COMMERCIAL REAL ESTATE SERVICES

ROY HOWETT

925.639.7160

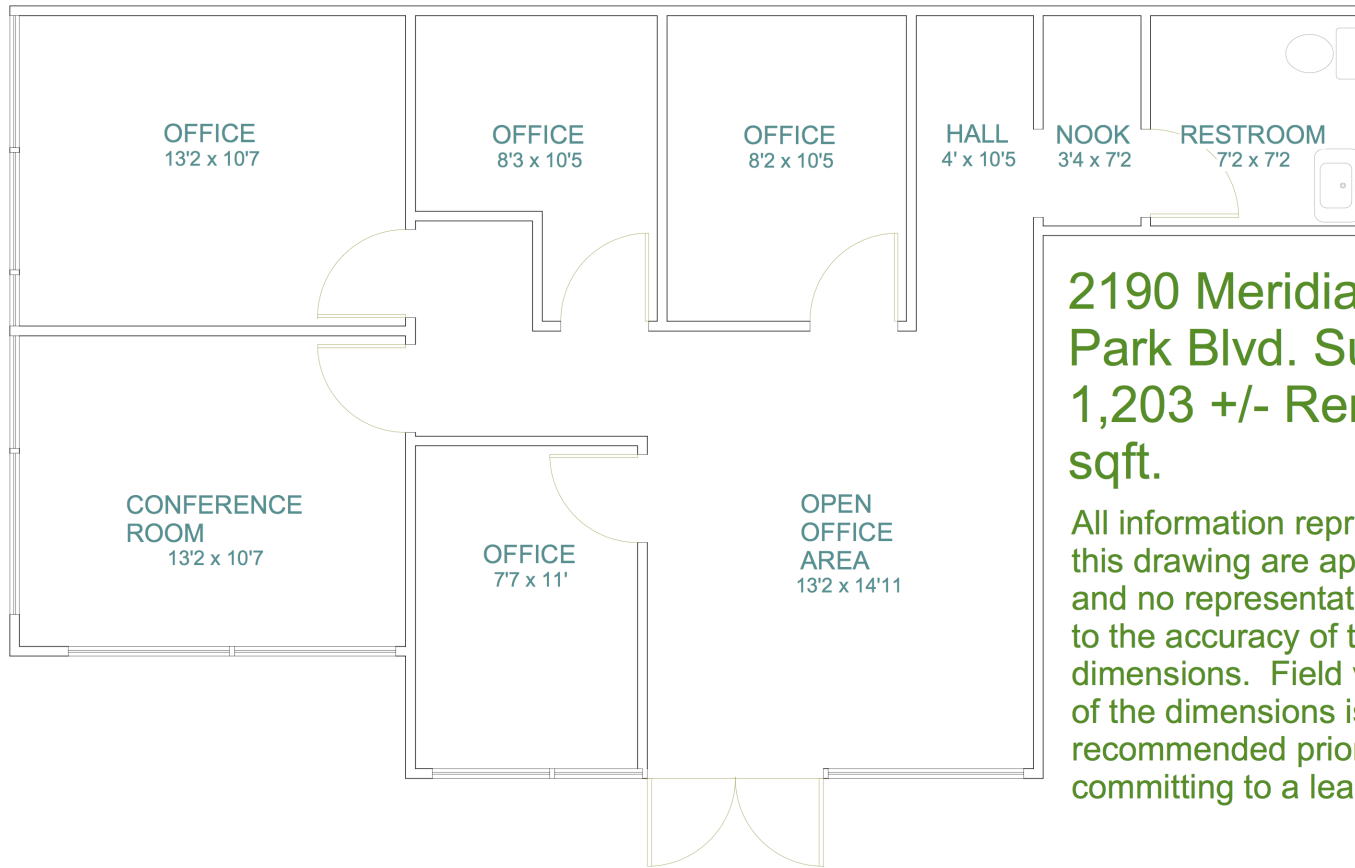
The information in this flyer was obtained from sources deemed reliable, however no warranty or representation, expressed or implied is made as to the accuracy of the information contained herein.



WILLOWICK BUSINESS PARK



CONCORD, CA



**2190 Meridian
Park Blvd. Suite G
1,203 +/- Rentable
sqft.**

All information represented on this drawing are approximate and no representation is made to the accuracy of the dimensions. Field verification of the dimensions is recommended prior to committing to a lease.



HOWETT PROPERTIES

ROY HOWETT

COMMERCIAL REAL ESTATE SERVICES

925.639.7160

The information in this flyer was obtained from sources deemed reliable, however no warranty or representation, expressed or implied is made as to the accuracy of the information contained herein.