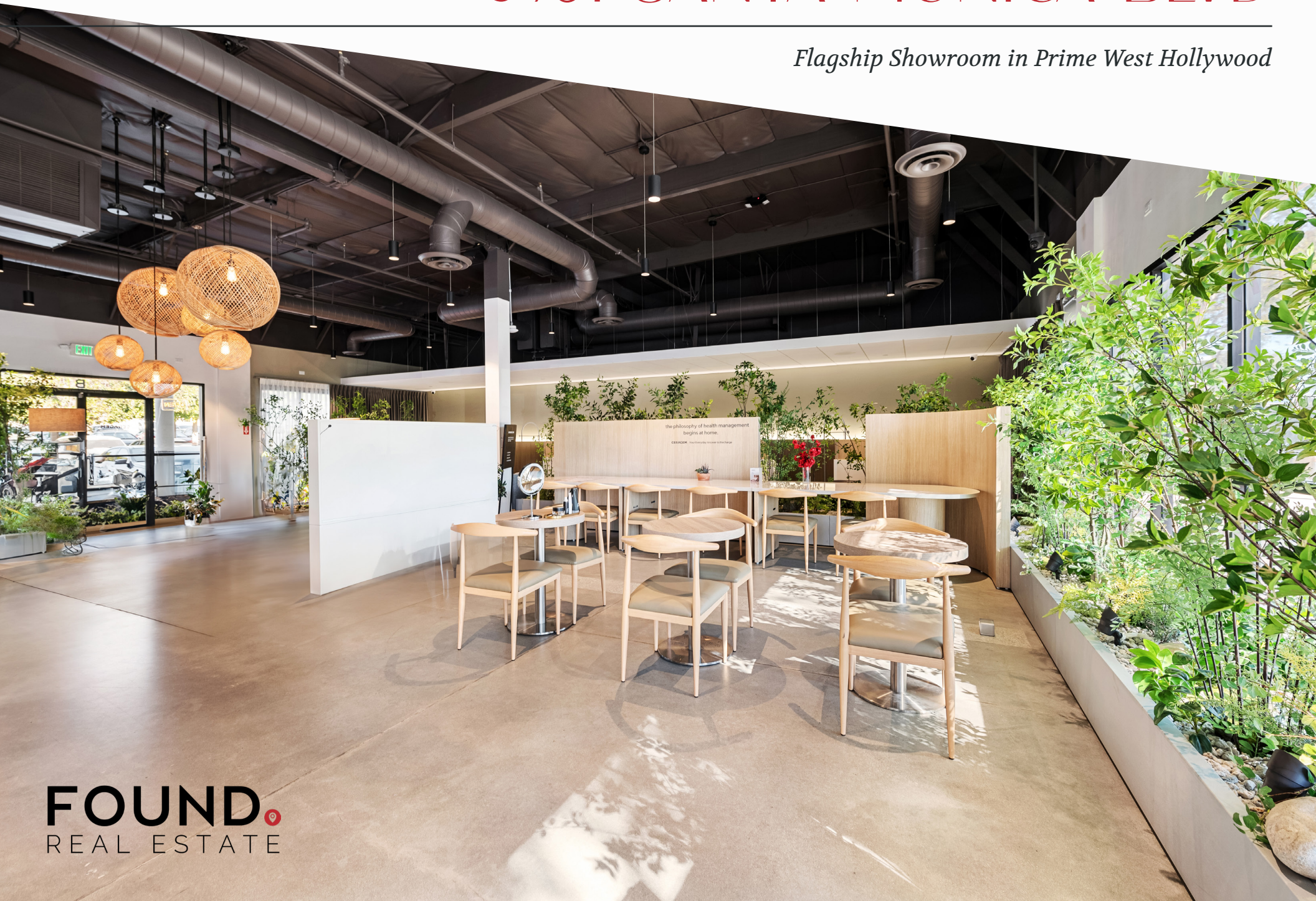


# 8951 SANTA MONICA BLVD

*Flagship Showroom in Prime West Hollywood*



# OVERVIEW



SIZE  
3,015 RSF



RATE  
Available upon Request



TERM  
Through April 30, 2028



PARKING  
On-site parking available in rear



FRONTAGE  
70'+ along Santa Monica Blvd.

The newly renovated showroom offers high ceilings and abundant natural light, providing a bright and inviting atmosphere. It includes an on-site café and lounge, a generous showroom for product displays, storage room, a private office, and two restrooms for added convenience.



# THE CENTER



PAVILIONS®

CHASE 

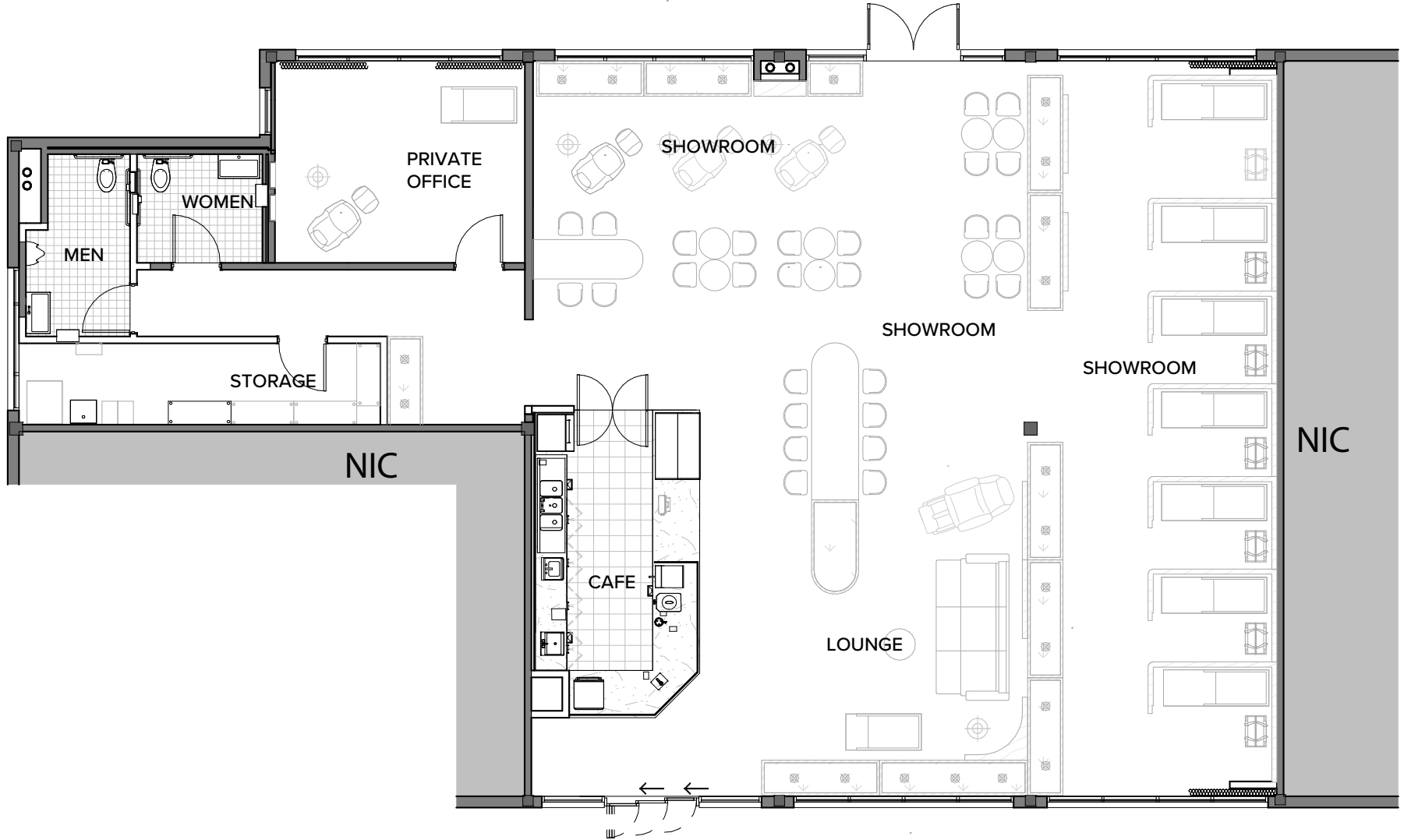
 STARBUCKS®

THE JOINT®  
chiropractic



  
SKINTHESIS®

# FLOOR PLAN



# SHOWROOM



# CAFE | LOUNGE AREA



# AREA OVERVIEW



## NEARBY SHOPPING DESTINATIONS

**SUNSET PLAZA**

0.1 miles

**BEVERLY CENTER**

0.9 miles

**M | MELROSE AVENUE**

1.4 miles



(The Golden Triangle)  
1.7 miles



**THE GROVE**

2.5 miles

**Westfield**  
CENTURY CITY

2.7 miles

# MARKET DEMOGRAPHICS



ESTIMATED  
CARS PER DAY:  
47,990



POPULATION  
1 mile: 36,826  
3 mile: 249,370



DAYTIME  
EMPLOYMENT:  
1 mile: 58,616  
3 mile: 265,737



MEDIAN AGE:  
1 mile: 43.7  
3 mile: 40.6



AVERAGE  
HOUSEHOLD INCOME:  
1 mile: 132,273  
3 mile: \$127,352



BACHELOR DEGREE  
OR HIGHER:  
1 mile: 63%  
3 mile: 59%

# 8951 SANTA MONICA BLVD

**DOUG FILLMORE**

*Principal*

310.943.7169

doug@foundcre.com

BRE# 02092675

**MATT MCLAUGHLIN**

*Principal*

310.694.3979

matt@foundcre.com

BRE# 02079289



Every effort has been made to accurately represent the property and its potential. However, all information and estimates provided are to be used for informational purposes only. They are not to be construed as an exact representation of the property or a prediction of future value. Potential lessees or buyers are advised to conduct a thorough investigation of the property independently. This brochure and the contents herein do not constitute a contract, warranty, or an offer, which can only be made by the property's legal owner. Images and depictions are for illustrative purposes only and may not represent current conditions or conveyance of the property.

**FOUND.**  
REAL ESTATE