

685 YONGE

2ND LEVEL RETAIL FOR LEASE | DOWNTOWN YONGE, TORONTO



CBRE

685 YONGE

2ND LEVEL RETAIL FOR LEASE | DOWNTOWN YONGE, TORONTO

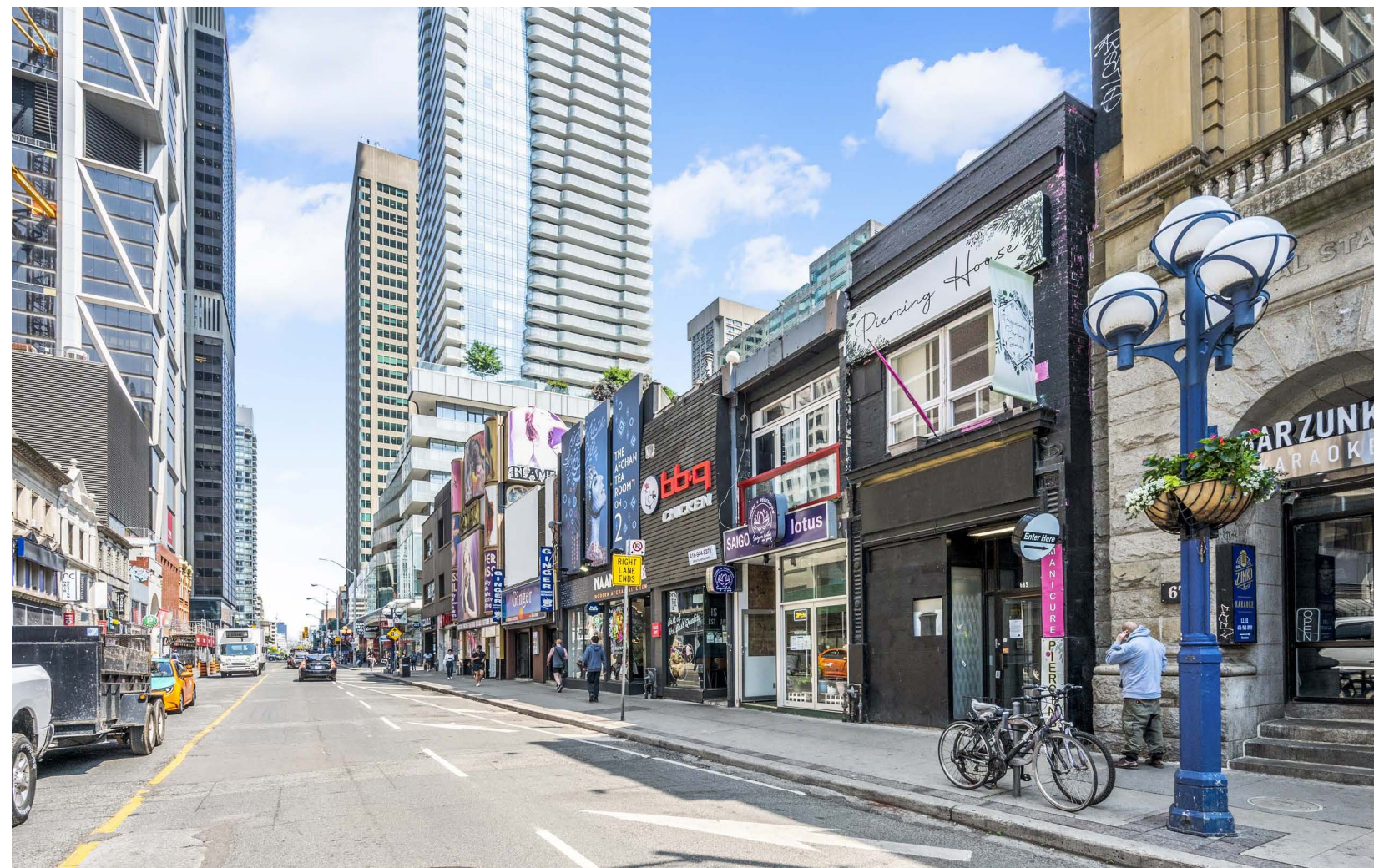
Size: Second Level: 757 sq. ft.

Gross Rent: \$4,000/month

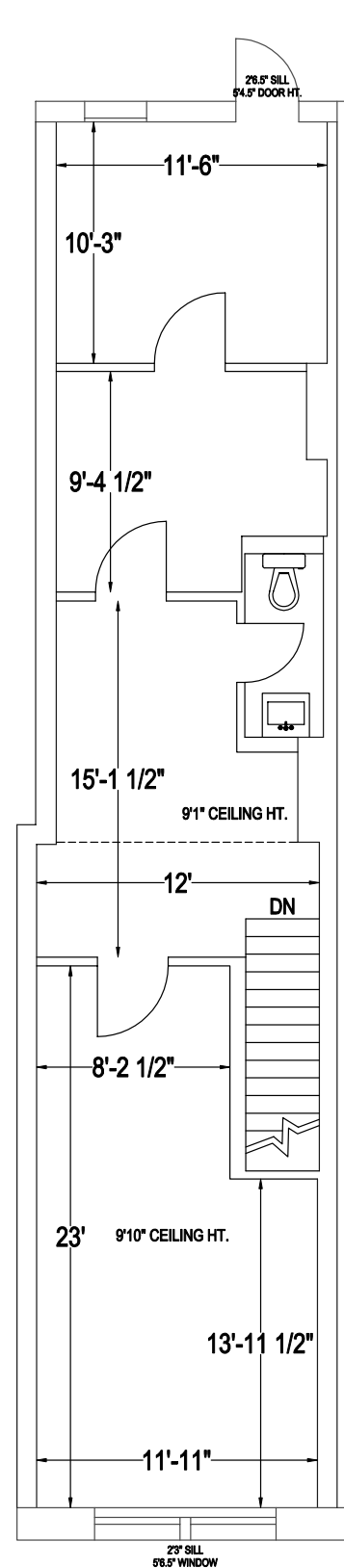
Available: Immediately

- Prime second level retail for lease with excellent exposure onto Yonge Street
- Located one door from the corner of Yonge Street and Charles Street and steps to the intersection of Yonge and Bloor
- High pedestrian and vehicular traffic all year round
- Less than a minute walk to Bloor-Yonge Subway Station

CBRE

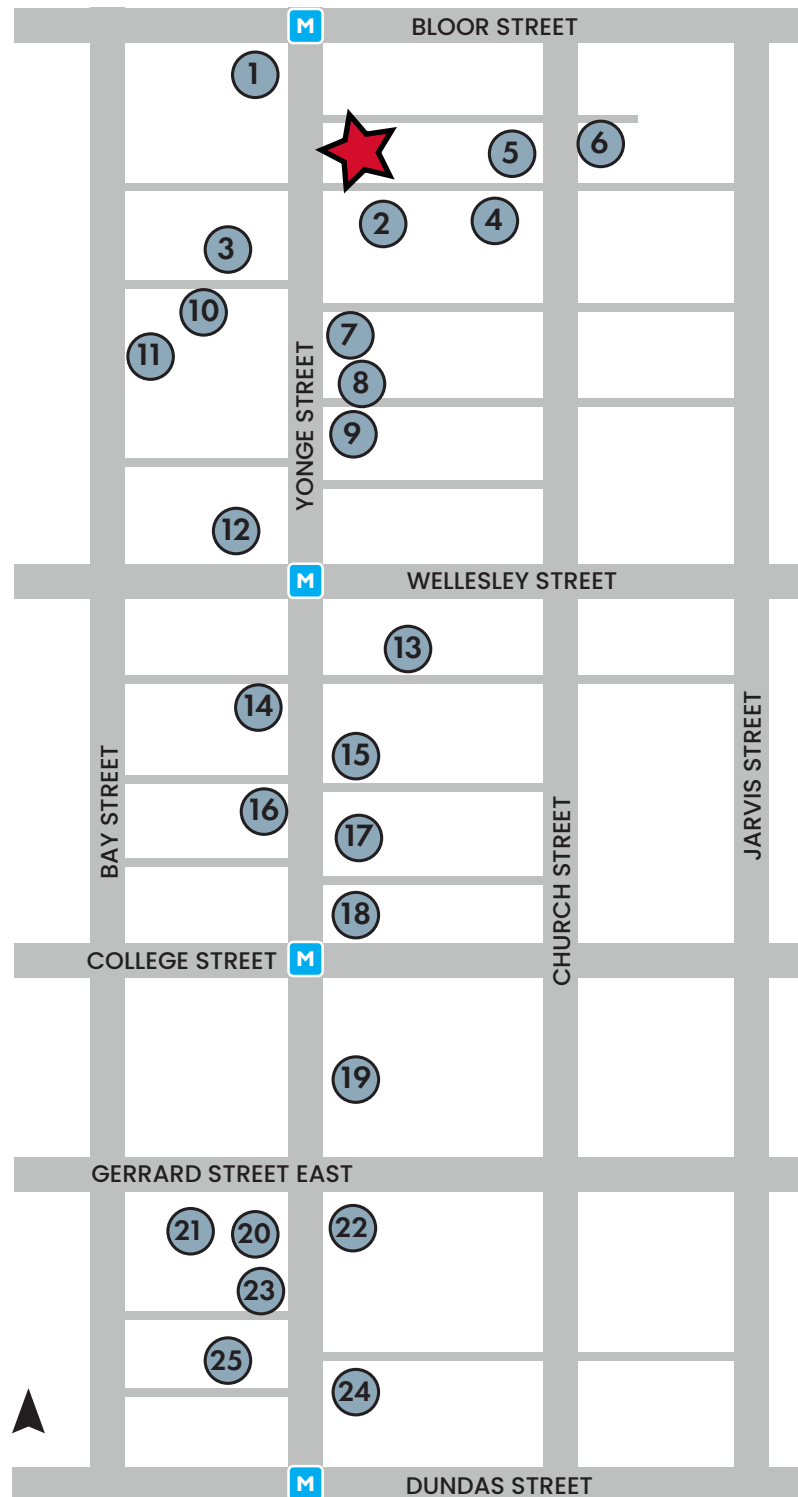


Second Level Floor Plan | 757 SF

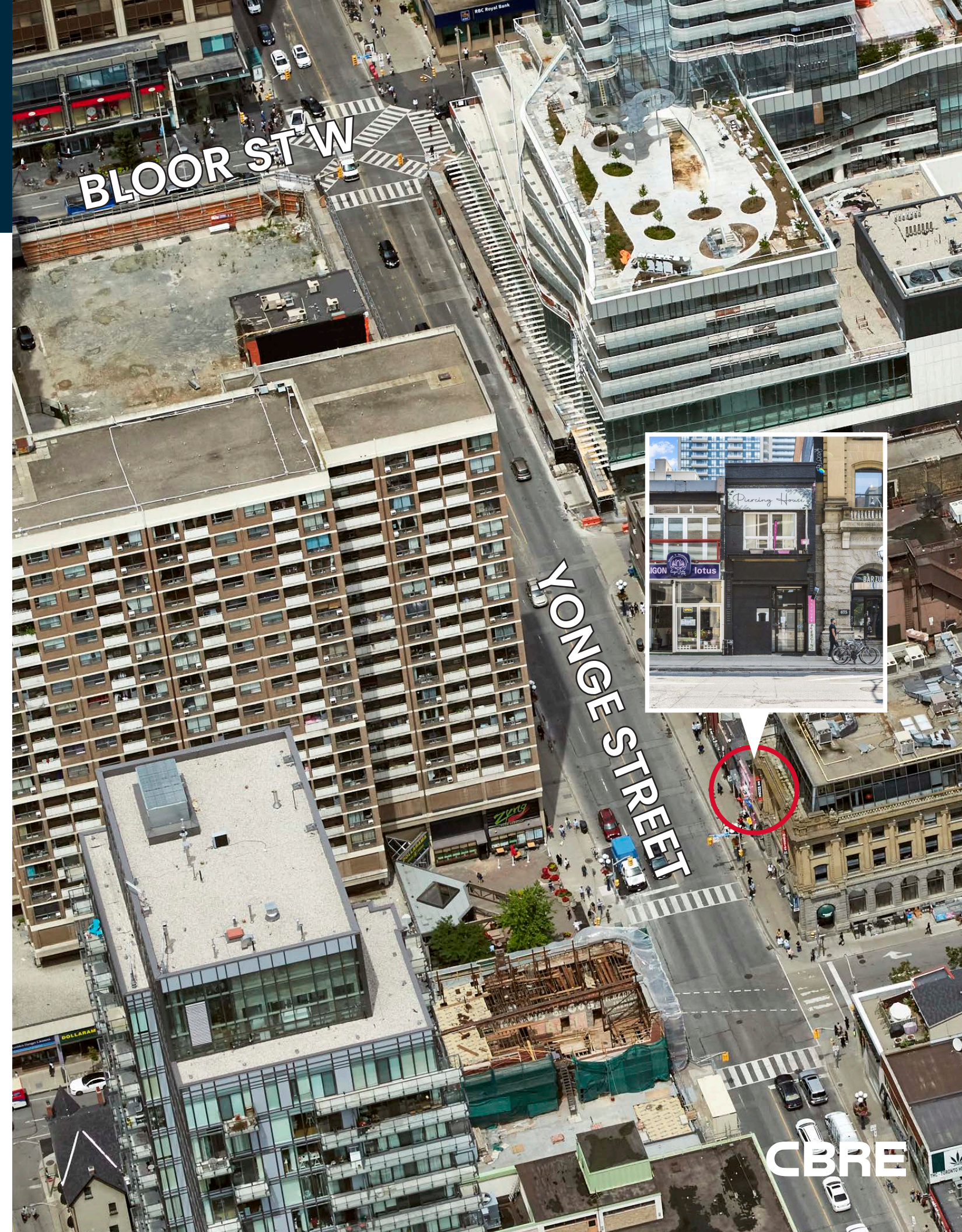


Area Developments

Over 17,000 new units



	Address/ Name	# of Units	Status
1	The One	505	Construction
2	15 Charles	549	Pre-Construction
3	10 St. Mary	465	Pre-Construction
4	55 Charles	665	Construction
5	The Charles	428	Construction
6	625 Church	656	Pre-Construction
7	619 Yonge	606	Pre-Construction
8	The Ivy	232	Construction
9	599 Yonge	528	Construction
10	25 St. Mary	1143	Pre-Construction
11	1075 Bay	540	Pre-Construction
12	8 Wellesley	600	Construction
13	20 Maintland	502	Pre-Construction
14	510 Yonge	500	Pre-Construction
15	Teahouse	608	Construction
16	Halo Condo	451	Construction
17	475 Yonge	1611	Pre-Construction
18	2 Carlton	990	Pre-Construction
19	415 Yonge	471	Pre-Construction
20	372 Yonge	415	Pre-Construction
21	Chelsea Green	2109	Pre-Construction
22	Concord Sky	1106	Construction
23	8 Elm	819	Pre-Construction
24	335 Yonge	165	Pre-Construction
25	Panda	555	Construction
TOTAL		17,219	





Contact

Arlin Markowitz*
Executive Vice President
416 815 2374
arlin.markowitz@cbre.com

Alex Edmison*
Senior Vice President
416 874 7266
alex.edmison@cbre.com

Jackson Turner**
Senior Vice President
416 815 2394
jackson.turner@cbre.com

Teddy Taggart*
Vice President
416 847 3254
teddy.taggart@cbre.com

Emily Everett*
SalesAssociate
647 943 4185
emily.everett@cbre.com

* Sales Representative
** Broker

CBRE

This disclaimer shall apply to CBRE Limited, and to all divisions of the Corporation ("CBRE"). The information set out herein (the "Information") has not been verified by CBRE, and CBRE does not represent, warrant or guarantee the accuracy, correctness and completeness of the Information. CBRE does not accept or assume any responsibility or liability, direct or consequential, for the Information or the recipient's reliance upon the Information. The recipient of the Information should take such steps as the recipient may deem necessary to verify the Information prior to placing any reliance upon the Information. The Information may change and any property described in the Information may be withdrawn from the market at any time without notice or obligation to the recipient from CBRE.