

GARMENT DISTRICT, MANHATTAN, NY

254 W 35TH STREET

MOD



CONCEPTUAL RENDERING

SPACE DETAILS

LOCATION

Between 7th & 8th Avenue

SPACE

Ground Floor: 5,500 SF + Basement

FRONTAGE

60 Feet

CEILING HEIGHTS

8-16 ft

POSSESSION

Immediate

ASKING RENT

Upon Request

NEIGHBORS

Starbucks, Liberty Bagels, Taco Bell, McDonald's, Apollo Bagels, John Sullivan's, Stout NYC, LALYN, Patiala Indian Grill & Bar, Jack Doyle's, Planet Fitness, Renaissance New York Midtown Hotel, Sushi 35 West, Best Bagel & Coffee, Gosuke, Chick-fil-A, Staples, Penn Station, and more

TRANSPORTATION



COMMENTS

- Prime Garment District Retail Location
- One block from Penn Station, MSG and more
- Gas, venting and HVAC in place
- Great for Bars, Restaurants, Coffee, Medical, Art galleries and more
- 24/7 Foot Traffic
- Divisions Considered
- All Uses Considered

CONTACTS

MEYER DAGMY

718-249-3613

m@modcre.com

EDDIE MAMIYE

917-379-6719

e@modcre.com

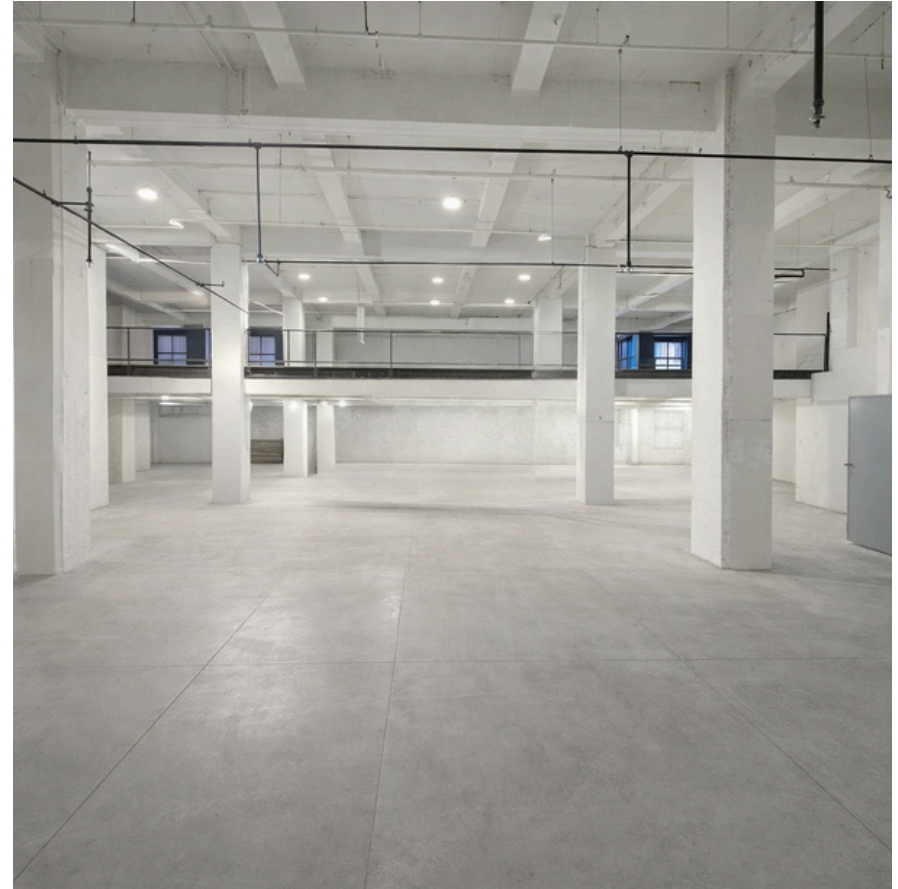
MIKE SUTTON

917-588-1000

mike@modcre.com



INTERIOR IMAGES



CONTACTS

MEYER DAGMY

718-249-3613

m@modcre.com

EDDIE MAMIYE

917-379-6719

e@modcre.com

MIKE SUTTON

917-588-1000

mike@modcre.com



OTHER IMAGE



CONTACTS

MEYER DAGMY

718-249-3613

m@modcre.com

EDDIE MAMIYE

917-379-6719

e@modcre.com

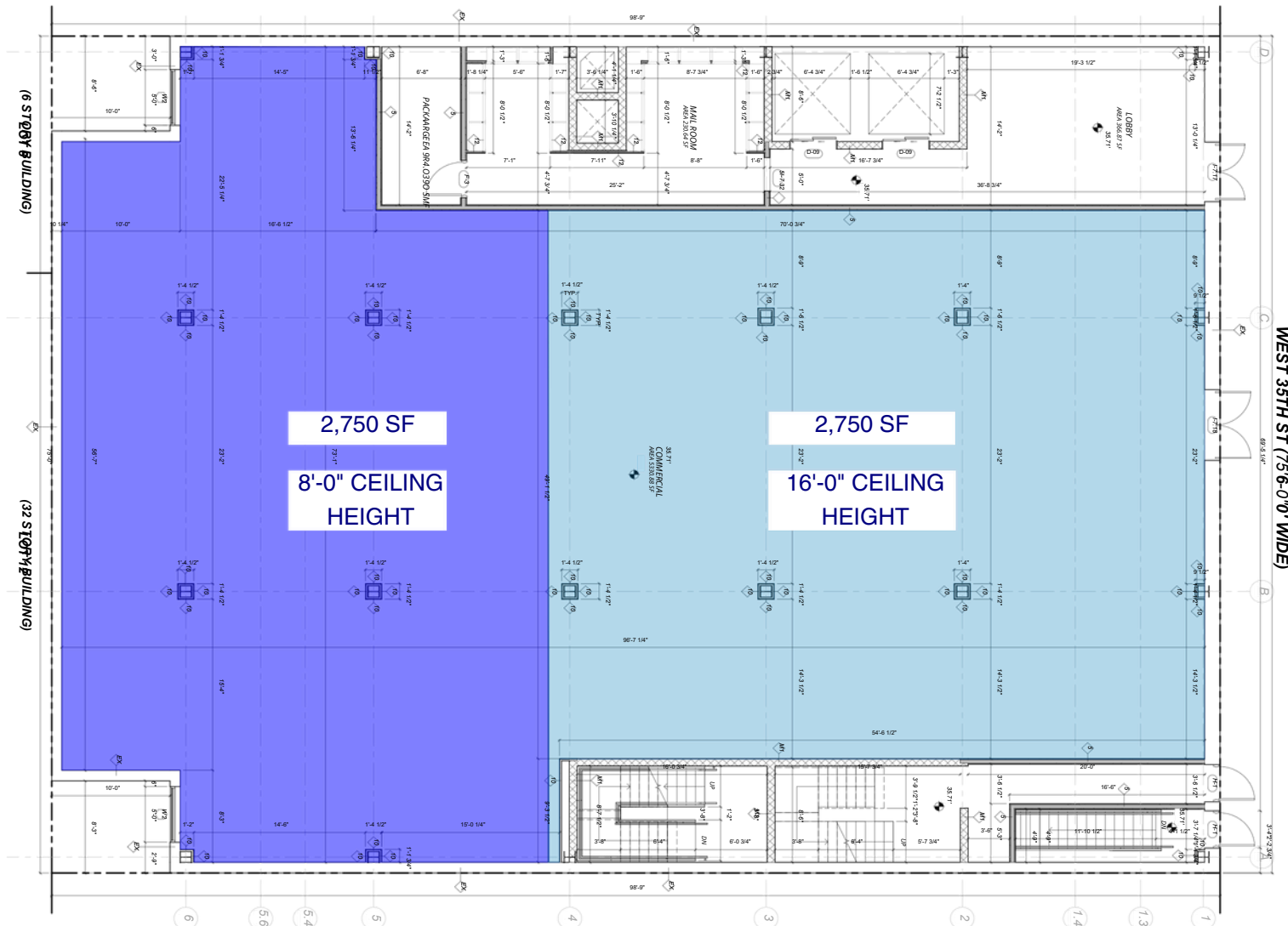
MIKE SUTTON

917-588-1000

mike@modcre.com



FLOOR PLAN



254 WEST 35TH ST FIRST FLOOR MARKETING PLAN

CONTACTS

MEYER DAGMY

718-249-3613

m@modcre.com

EDDIE MAMIYE

917-379-6719

e@modcre.com

MIKE SUTTON

917-588-1000

mike@modcre.com



AREA MAP



CONTACTS

MEYER DAGMY

718-249-3613

m@modcre.com

EDDIE MAMIYE

917-379-6719

e@modcre.com

MIKE SUTTON

917-588-1000

mike@modcre.com

