

# For Lease

**2,111 SF**  
Office Space



## Abele Business Park | Suite 1523

100 Emerson Lane, Bridgeville, PA 15017

### Property Features

Abele Business Park offers a variety of flexible workspace solutions within a welcoming campus setting encompassing over 300,000 square feet of office and flex products.

- Dedicated Client Experience Team
- Exclusive Access to Partner Perks Program
- Private Entrance
- Free Parking
- Built-To-Suit Options
- Daycare in Park
- Convenient Accessibility from I-79 (Bridgeville Exit)



**Joe Sheerer**

412.925.8356  
jsheerer@naiburnscalco.com

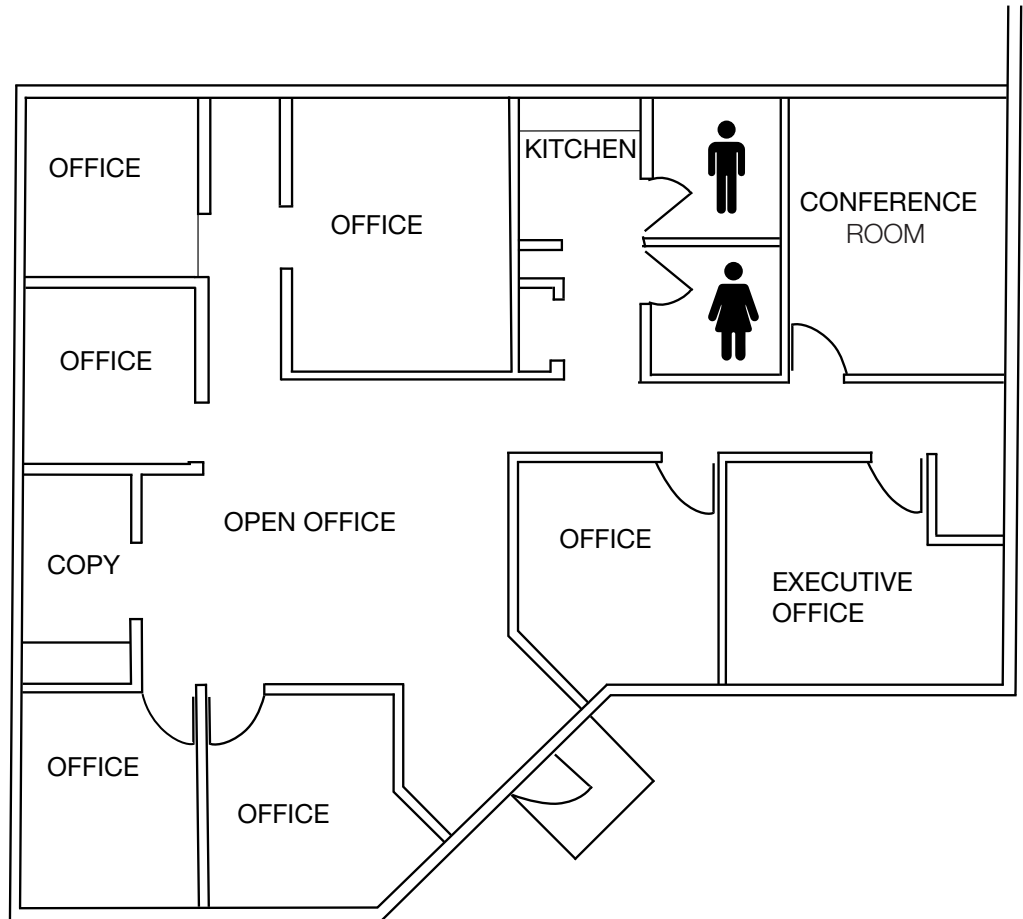
**Carolyn Pierotti**

412.477.4540  
cpierotti@naiburnscalco.com

**NAI Burns Scalo**  
Brokerage Services

## Suite 1523 Floor Plan

- 2,111 SF
- 6 Private Offices
- Private Restrooms
- Conference Room



**Joe Sheerer**

412.925.8356  
jsheerer@naiburnsscalo.com

**Carolyn Pierotti**

412.477.4540  
cpierotti@naiburnsscalo.com

**NAI Burns Scalo**  
Brokerage Services

# Amenities Map

100 Emerson Lane  
Suite 1510 - 12,124 SF



**Joe Sheerer**  
412.925.8356  
jsheerer@naiburnsscalo.com

**Carolyn Pierotti**  
412.477.4540  
cpierotti@naiburnsscalo.com

**NAI Burns Scalo**  
Brokerage Services