

# Hillside Village

24520-24596 HAWTHORNE BOULEVARD  
TORRANCE, CA



**NEWMARK**

**ERIC LASTITION**  
Exec. Managing Director  
t 310-491-2047  
eric.lastition@nrmk.com  
CA RE Lic. #01119647

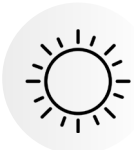
**GEOFF LUDWIG**  
Exec. Managing Director  
t 310-491-2077  
geoff.ludwig@nrmk.com  
CA RE Lic. #01232244

**ZACHARY CAINE**  
Associate Director  
t 310-491-2089  
zachary.caine@nrmk.com  
CA RE Lic. #02062263

## HILLSIDE VILLAGE



Mixed use property consisting of five low-rise buildings at the base of Palos Verdes



Open-air campus suitable for a variety of uses including office, medical and retail



Located near premier housing and top rated schools in surrounding submarkets



Ample complimentary surface parking in a ratio commensurate with space use



Onsite restaurants include Primo Italia, Misto Caffè, and Truxton's American Bistro



Identity opportunity for highly visible monument signage along Hawthorne Blvd



Less than two miles from the beautiful 87-acre South Coast Botanic Garden

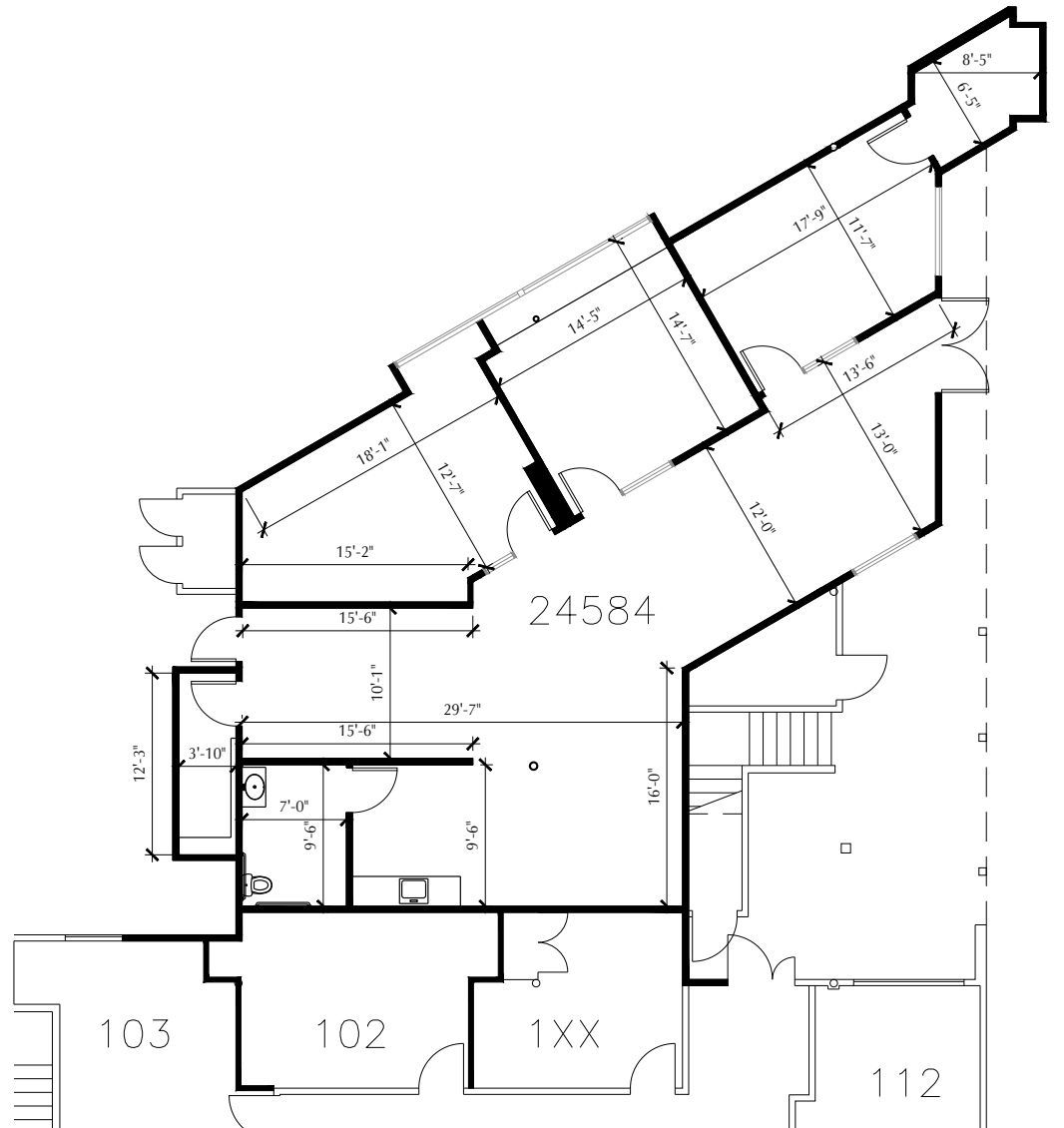
**NEWMARK**



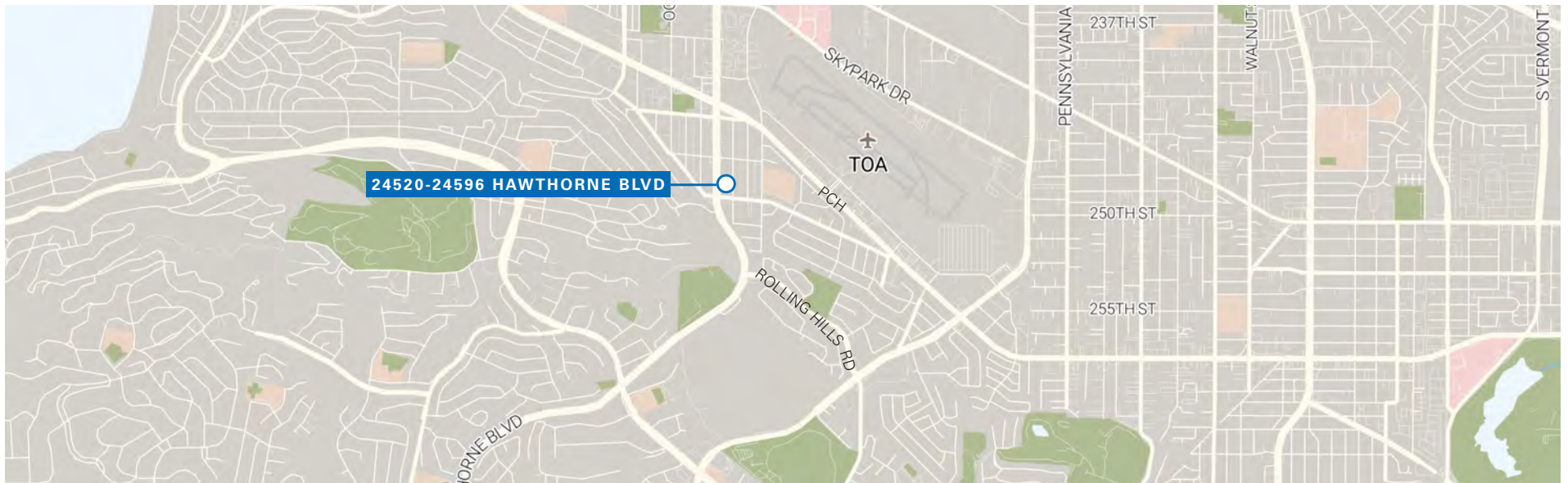
# Lease Availability

## SUITE 24584

1,995 Rentable Square Feet  
\$2.75 per RSF, Modified Gross  
OFFICE USE



## HILLSIDE VILLAGE



### LEASING CONTACTS

#### ERIC LASTITION

Exec. Managing Director  
t 310-491-2047  
eric.lastition@nmrk.com  
CA RE Lic. #01119647

#### GEOFF LUDWIG

Exec. Managing Director  
t 310-491-2077  
geoff.ludwig@nmrk.com  
CA RE Lic. #01232244

#### ZACHARY CAINE

Associate Director  
t 310-491-2089  
zachary.caine@nmrk.com  
CA RE Lic. #02062263

Corporate License #01355491

The information contained herein has been obtained from sources deemed reliable but has not been verified and no guarantee, warranty or representation, either express or implied, is made with respect to such information. Terms of sale or lease and availability are subject to change or withdrawal without notice.

# NEWMARK

[nmrk.com](http://nmrk.com)