

OFFICE CONDO UNITS FOR LEASE



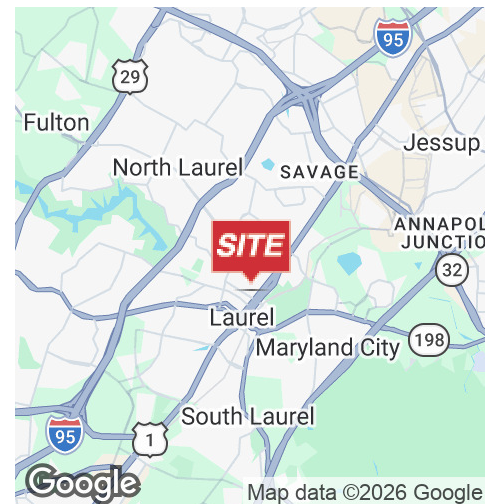
13 C STREET, UNITS D & G Laurel, MD 20707

LOCATION DESCRIPTION

Conveniently located just off of Washington Blvd. (Rt 1) in Laurel. Easy access to major routes such as Rt 198, Rt 32, the ICC (Rt 200), Baltimore-Washington Parkway and I-95.

PROPERTY DESCRIPTION

- Suites D & G Available
- 770-1,540 SF (contiguous units)
- Multi-office clinical layout
- Self-contained unit
- Separately metered utilities
- Traditional waiting/reception area
- Private bathrooms
- First floor accessibility
- \$1,200-2,400/mo. + utilities & cleaning



STEVE CATALANO

O: 301.646.9310
scatalano@naimichael.com

ALLEN CORNELL

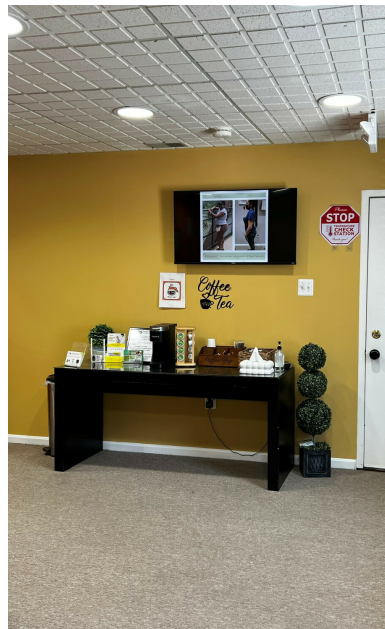
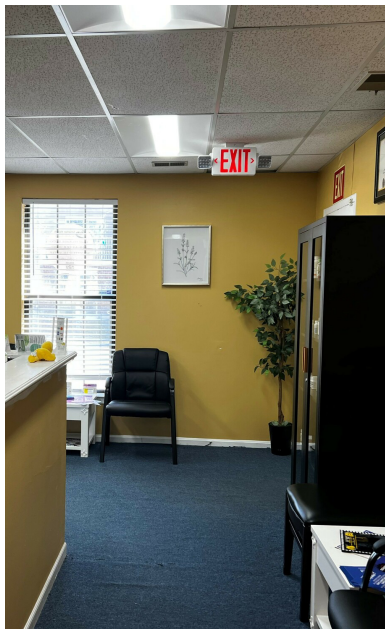
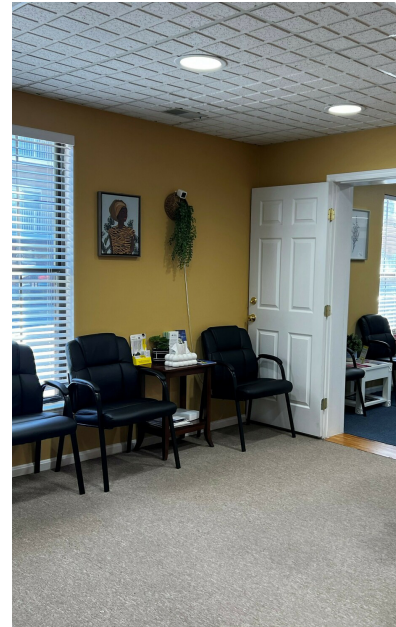
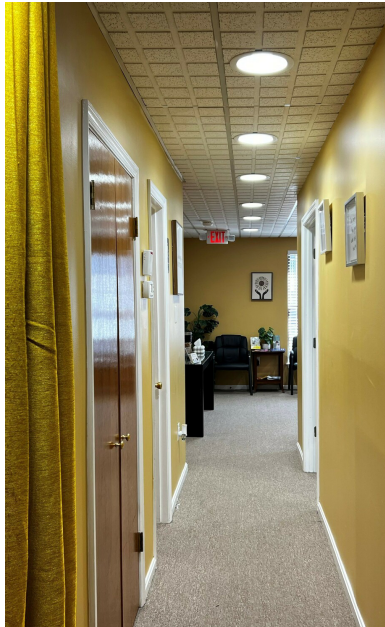
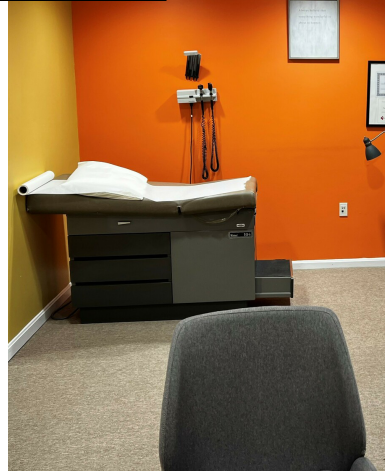
O: 301.918.2909
acornell@naimichael.com



10100 Business Pkwy | Lanham, MD 20706 | +1 301.459.4400 | naimichael.com

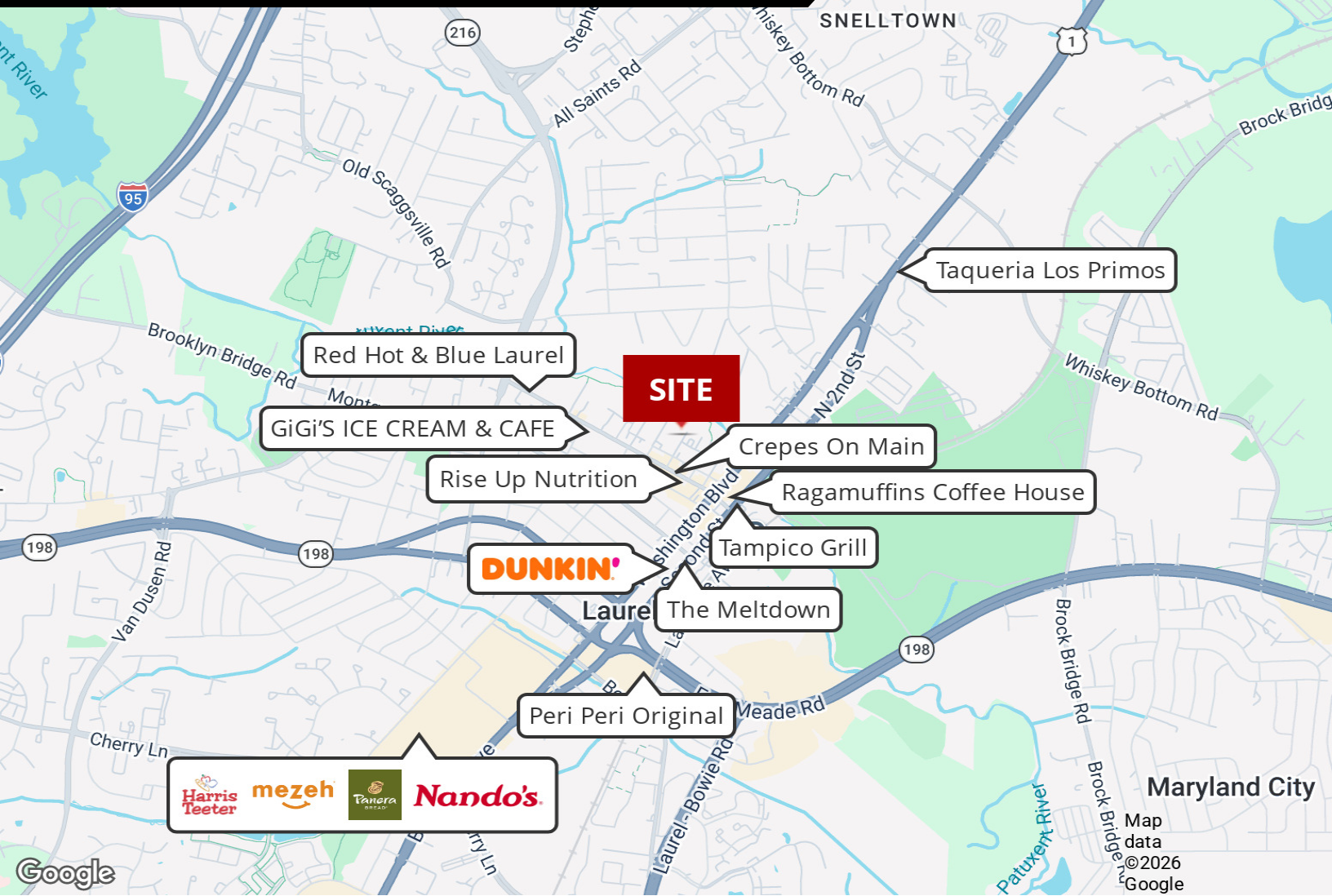
The information contained herein has been given to us by the owner of the property or other sources we deem reliable. We have no reason to doubt its accuracy, but we do not guarantee it. Floor plans, site plans and other graphic representations of this property have been reduced and reproduced, and are not necessarily to scale. All information should be verified prior to purchase or lease.

Office Condo Units For Lease
13 C STREET, UNITS D & G, LAUREL, MD 20707



Office Condo Units For Lease

13 C STREET, UNITS D & G, LAUREL, MD 20707



DEMOGRAPHICS



POPULATION



HOUSEHOLDS



AVG. HOUSEHOLD INCOME

1 Mile	16,855	6,471	\$102,806
3 Miles	96,465	36,953	\$123,071
5 Miles	171,198	61,847	\$135,442

2023 American Community Survey (ACS)

