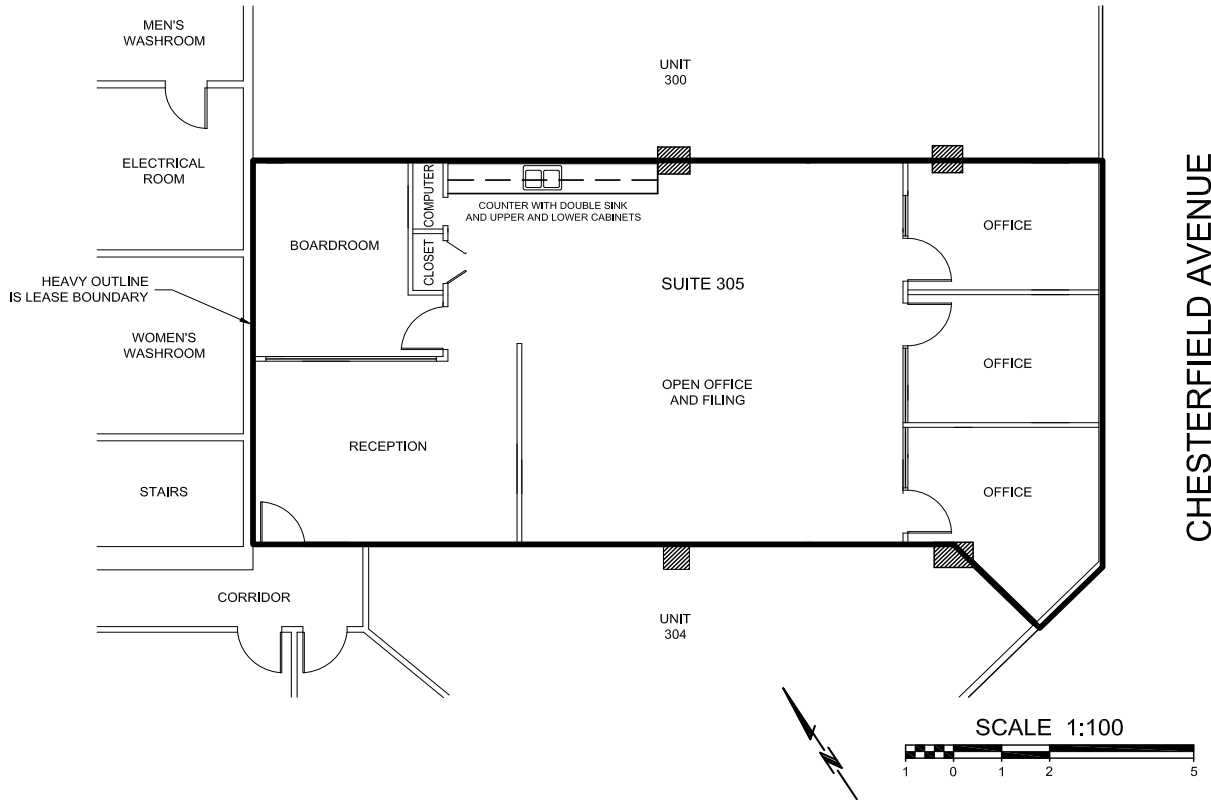


| Unit 305



Rentable Area: 1,948 SF
Availability: June 2026

Several private offices, space for boardroom, and kitchen with Eastward views.



LINDSAY KNOWLES
SENIOR LEASING MANAGER
778.875.2946
lknowles@warringtonpci.com

E. & O.E.: The information contained herein was obtained from sources which we deem reliable, and while thought to be correct, is not guaranteed by Warrington PCI Management.