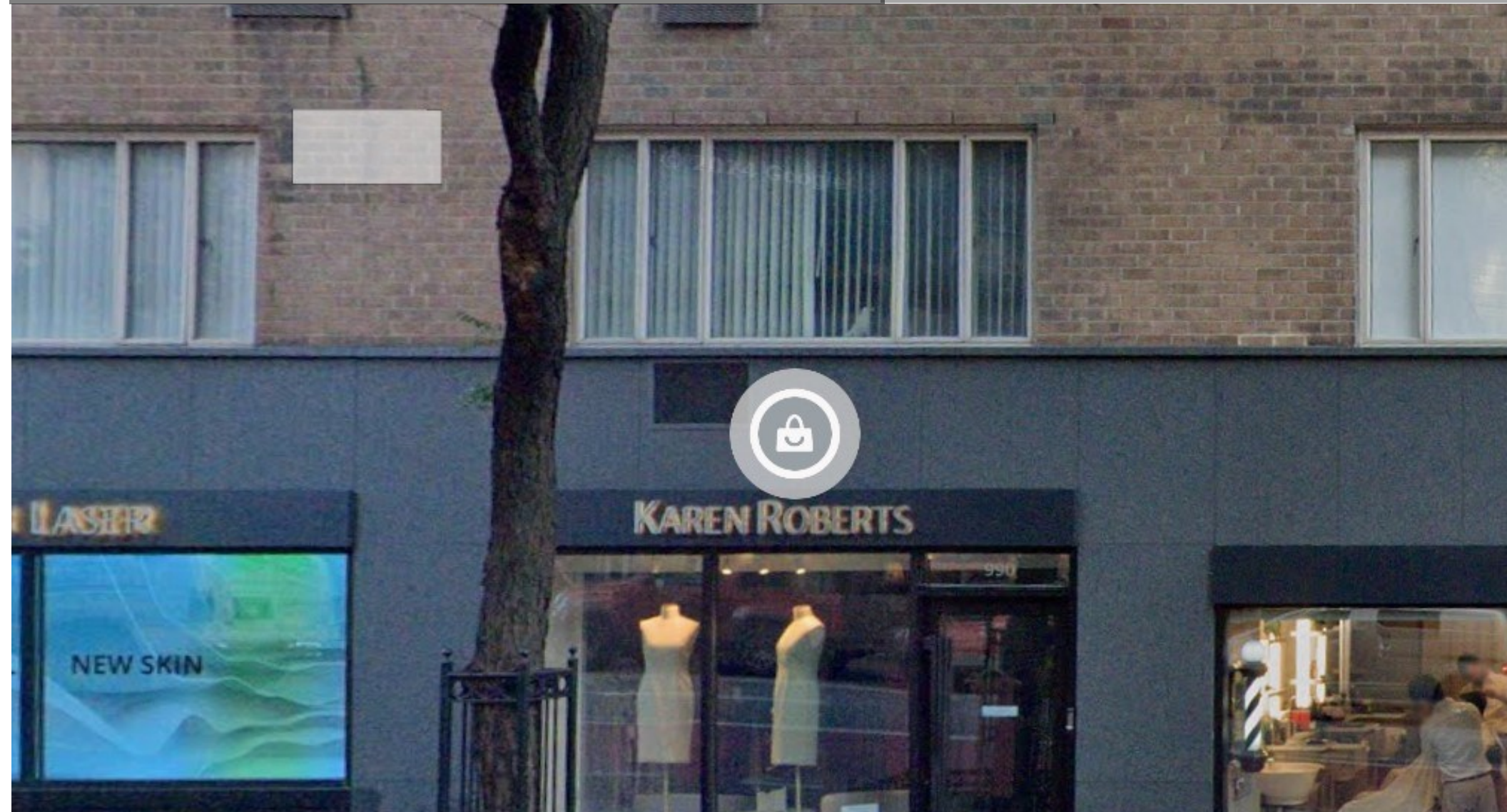


# 990 LEXINGTON AVENUE

BETWEEN EAST 71ST AND 72ND STREETS

UPPER EAST SIDE, NEW YORK, NY

UPPER EAST SIDE RETAIL FOR LEASE



# PROPERTY DETAILS

## PREMISES

Ground Floor: 400 square feet

## FRONTAGE

12 Feet on Lexington Avenue

## POSSESSION

Arranged

## TENANT

Currently Lauracea  
(previously Karen Roberts)

## ASKING RENT

\$6,700 per month

## FEATURES

- The Best Block on Lexington Avenue
- Very High Foot Traffic
- Non-Vented Food or Coffee Uses Considered
- New storefront
- Air conditioned
- Beautiful installation

## NEARBY TENANTS INCLUDE



# 990 LEXINGTON AVENUE

BETWEEN EAST 71ST AND EAST 72ND STREETS



Exclusively Represented by:

## THE DANA COMMERCIAL TEAM

AT DOUGLAS ELLIMAN REAL ESTATE

### GARY DANA

516-946-7207

[gdana@elliman.com](mailto:gdana@elliman.com)

### RICK DANA

917-952-0624

[rdana@elliman.com](mailto:rdana@elliman.com)

575 MADISON AVENUE, NY, NY 10022. 212.891.7000 © 2021 DOUGLAS ELLIMAN REAL ESTATE. ALL MATERIAL PRESENTED HEREIN IS INTENDED FOR INFORMATION PURPOSES ONLY. WHILE, THIS INFORMATION IS BELIEVED TO BE CORRECT, IT IS REPRESENTED SUBJECT TO ERRORS, OMISSIONS, CHANGES OR WITHDRAWAL WITHOUT NOTICE. ALL PROPERTY INFORMATION, INCLUDING, BUT NOT LIMITED TO SQUARE FOOTAGE, ROOM COUNT, NUMBER OF BEDROOMS AND THE SCHOOL DISTRICT IN PROPERTY LISTINGS SHOULD BE VERIFIED BY YOUR OWN ATTORNEY, ARCHITECT OR ZONING EXPERT. IF YOUR PROPERTY IS CURRENTLY LISTED WITH ANOTHER REAL ESTATE BROKER, PLEASE DISREGARD THIS OFFER. IT IS NOT OUR INTENTION TO SOLICIT THE OFFERINGS OF OTHER REAL ESTATE BROKERS. WE COOPERATE WITH THEM FULLY. EQUAL HOUSING OPPORTUNITY. 🏠



THE DANA COMMERCIAL TEAM  
**Douglas Elliman**  
REAL ESTATE EST. 1911