



Space Profile for

Unit: #305

Area: 1868 sq ft

Address

301-307 Horsham Rd.

Horsham, PA 19044



4300 West Cypress St., Suite 160

Tampa, FL, 33607

**Elements
Horsham SC**

FIRST NATIONAL
REALTY PARTNERS
FIRST NATIONAL REALTY
PARTNERS

125 Half Mile Rd Suite 207
Red Bank, NJ 07701

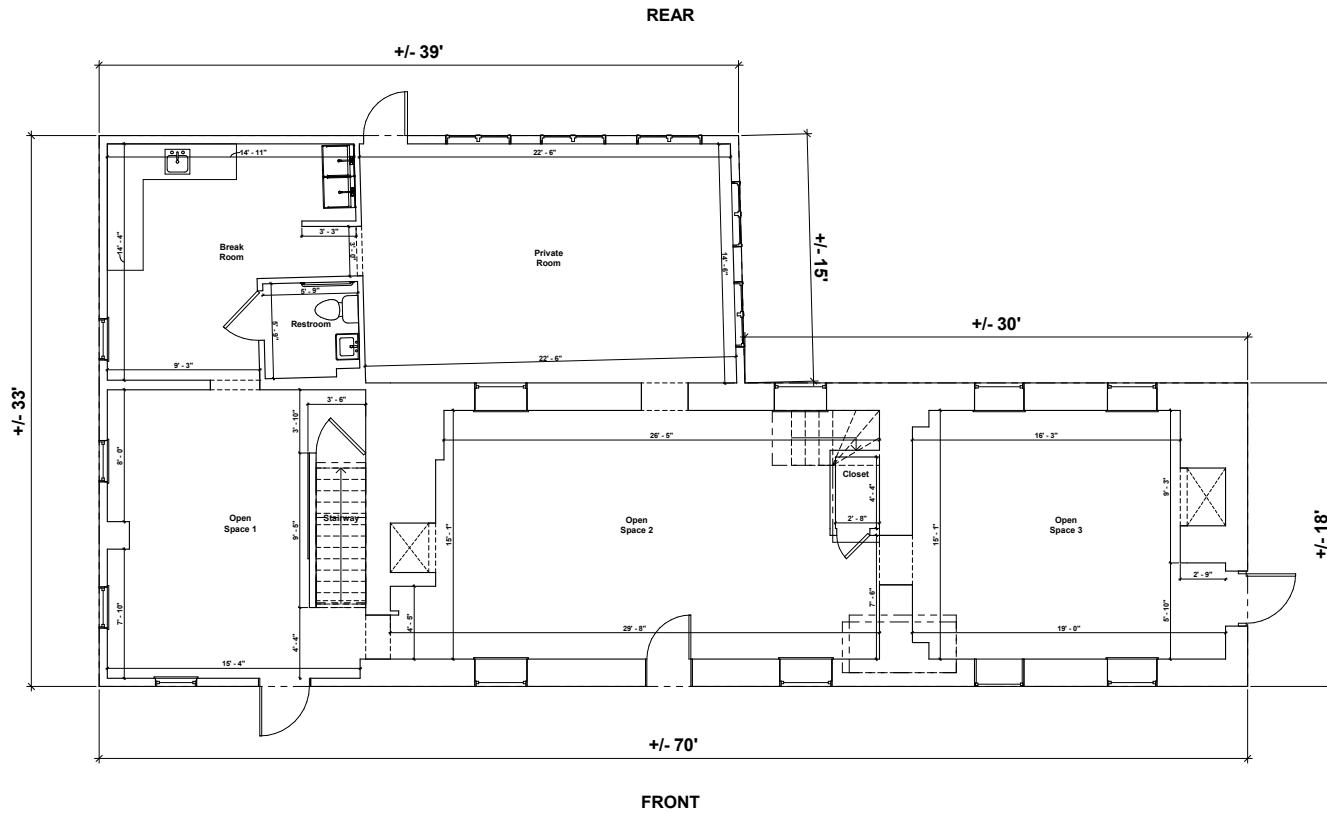
**Unit # 305
Ground Floor
+/- 1,868 SF**

Gross Square footage shown was measured on-site and adheres to BOMA standards

**Total SF
+/- 3,106 SF**

**Width
+/- 70'**

**Depth
+/- 33'**



Revisions

Floor Plan
Prepared 05/16/2024
Unit # 305

Plans Produced by:
ID PLANS

4300 West Cypress Street, Suite 160,
Tampa, Florida 33607
Phone: (866) 657-2545
idplans.com

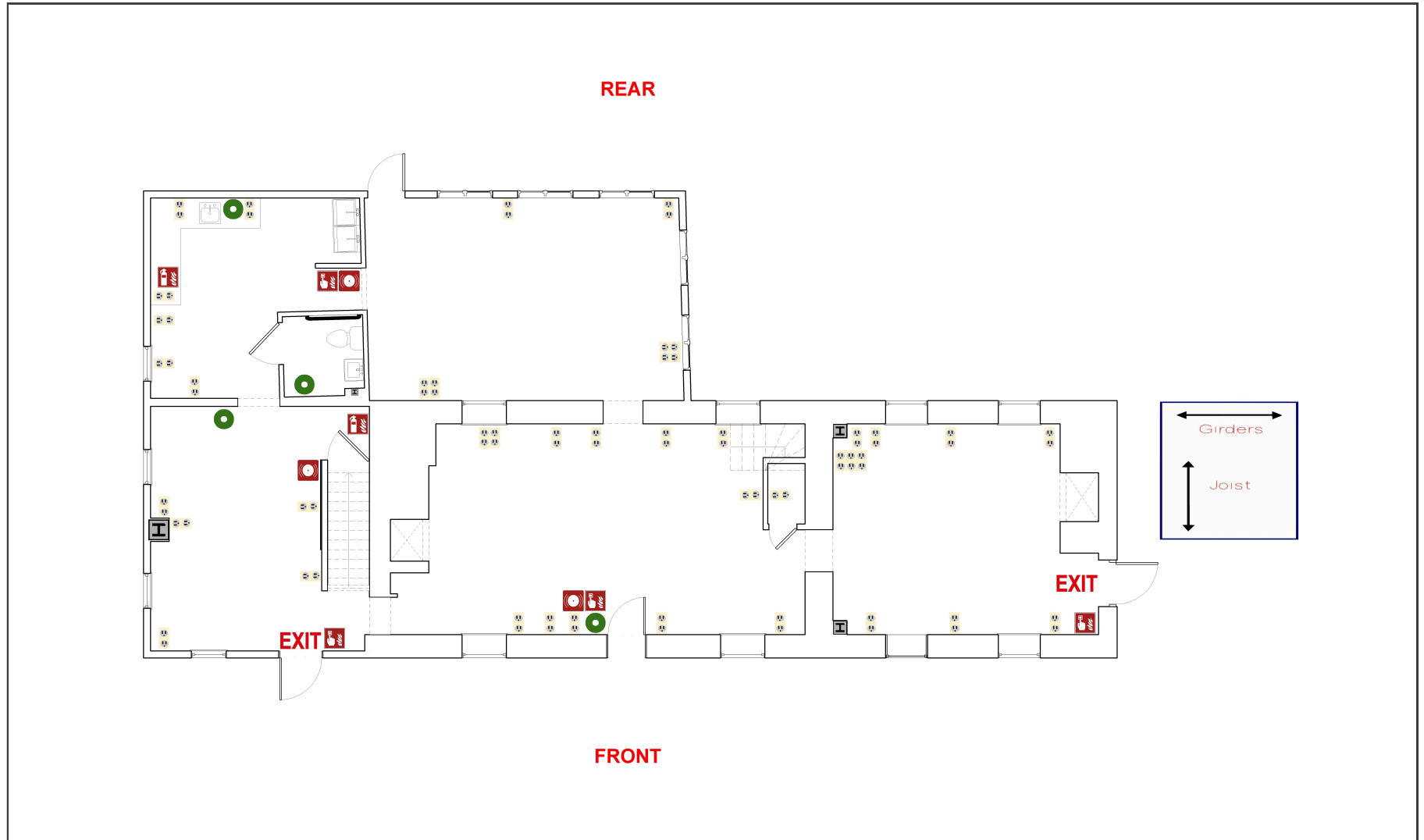
ID PLANS

© 2024

Floor plan is for general use and purposes only. ID Plans does not guarantee the accuracy or validity of provided information. Measurements are not intended to be architecturally used for construction purposes or intended as replacement for documents, drawings, or media intended or claiming to be architecturally accurate such as blueprints. The architect reserves the right and the right and responsibility to verify, change or alter the provided information at any time for any reason.

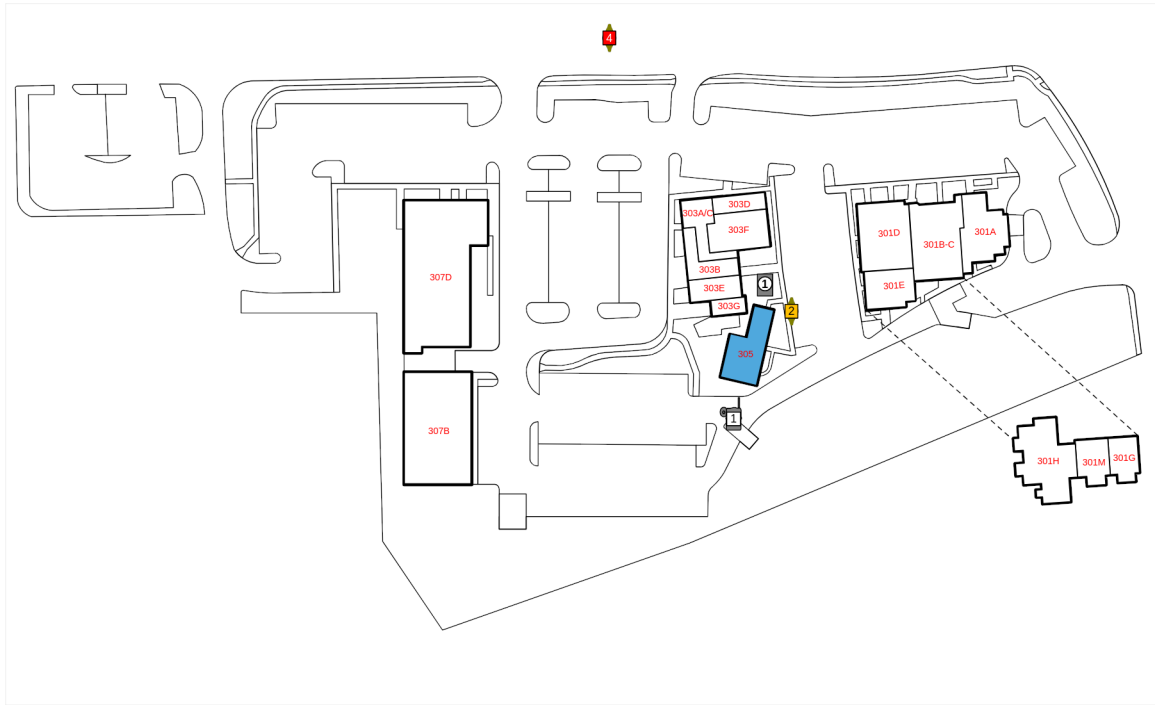
A1 MAIN FLOOR





Legend

	Breaker Panel		Fire Extinguisher		Ceiling Fan w/ Light		Fire Sprinkler
	Circular Column		Fire Alarm Pulldown		Rectangular Column		Pocket Door
	Appliance Outlet		Glass Door		Refrigerator		Track Lighting
	Fire Alarm		Handicap Handrail		Roll-Up Door		2-Bulb Fluorescent Lighting
	Drinking Fountain		Roof Hatch		Sink		3-Bulb Fluorescent Lighting
	Door		HVAC Unit		Swing Door		4-Bulb Fluorescent Lighting
	Double Hung Door		Recessed Light		Toilet		Ceiling Air Vent
	Electrical Outlet		Staircase		Can Light		Air Diffuser
	Emergency Light		Water Heater		Urinal		Ceiling Fan w/o Light
	Exit Light		Telephone Panel		Thermostat		Air Handler
	Tankless Water Heater		Window Wall Opening		RJ 45		Fire Alarm Control Panel
	Step Down Transformer		Maintenance Sink		Window		Tenant Water Meter
	Disconnect		Sub Water Meter		House Gas Meter		Sub Gas Meter
	House Water Meter		Air Handler		House Electric Meter		Tenant Electric Meter
	Tenant Gas Meter		Vertical Fire Riser		Horizontal Fire Riser		
	Sub Electric Meter						



Space Overview

Overview	Actual Square Footage	Measured Depth of Space
	1868 SQFT	33' 0"

Thickness	Front Wall	Rear Wall	Left Wall	Right Wall
	1' 8"	1' 8"	0' 6"	1' 4"

Flooring	Concrete	Carpet	Tile	Other	Unit	Total
	326 SQFT		210 SQFT	936 SQFT	1868 SQFT	1472 SQFT

Ceiling Information	Height From Floor To Ceiling	Height From Floor To Bottom Of Deck	Height From Floor To Bottom Of Joist
	Front: 7' 8" Back: 7' 0"	Front: 8' 7"	Front: 7' 9"

Ceiling Information Cont.	Clear Ceiling Height
	6' 5"

Mechanical

Not Present	Assets Not Present
	HVAC
	Air Handler

Electric

Electric Meter	Reference	Meter #	Location	Amps	Notes
	1		018036478	Electrical Room	

Not Present	Assets Not Present
	Service Panel
	Main Disconnect
	Step-Down Transformer

IDPlans does not provide an Ampacity Report

Plumbing

House Water Meter	Reference	Meter #	Location	Meter Size	Notes
	1	73739638	Front Exterior	2 inch	

Not Present	Assets Not Present
	Water Heater
	Water Fountains
	Backflows

Sub Water Meter	Reference	Meter #	Location	Meter Size	Line Size	Notes
	1	43733167	Basement	5/8 inch		

Waste

Not Present	Assets Not Present
	Grease Trap
	Grease Container

Fire

Fire Extinguisher	Number of Fire Extinguishers	Notes
	2	

Not Present	Assets Not Present
	Fire Alarm Control Panel
	Sprinkler Heads

Gas

Gas Meter	Reference	Meter #	Location	Size	Notes
	1	020589713	Left Exterior	1 1/2 inch	

Room

Restroom	Unit	Description
	Restroom 1	

Storefront 1

