

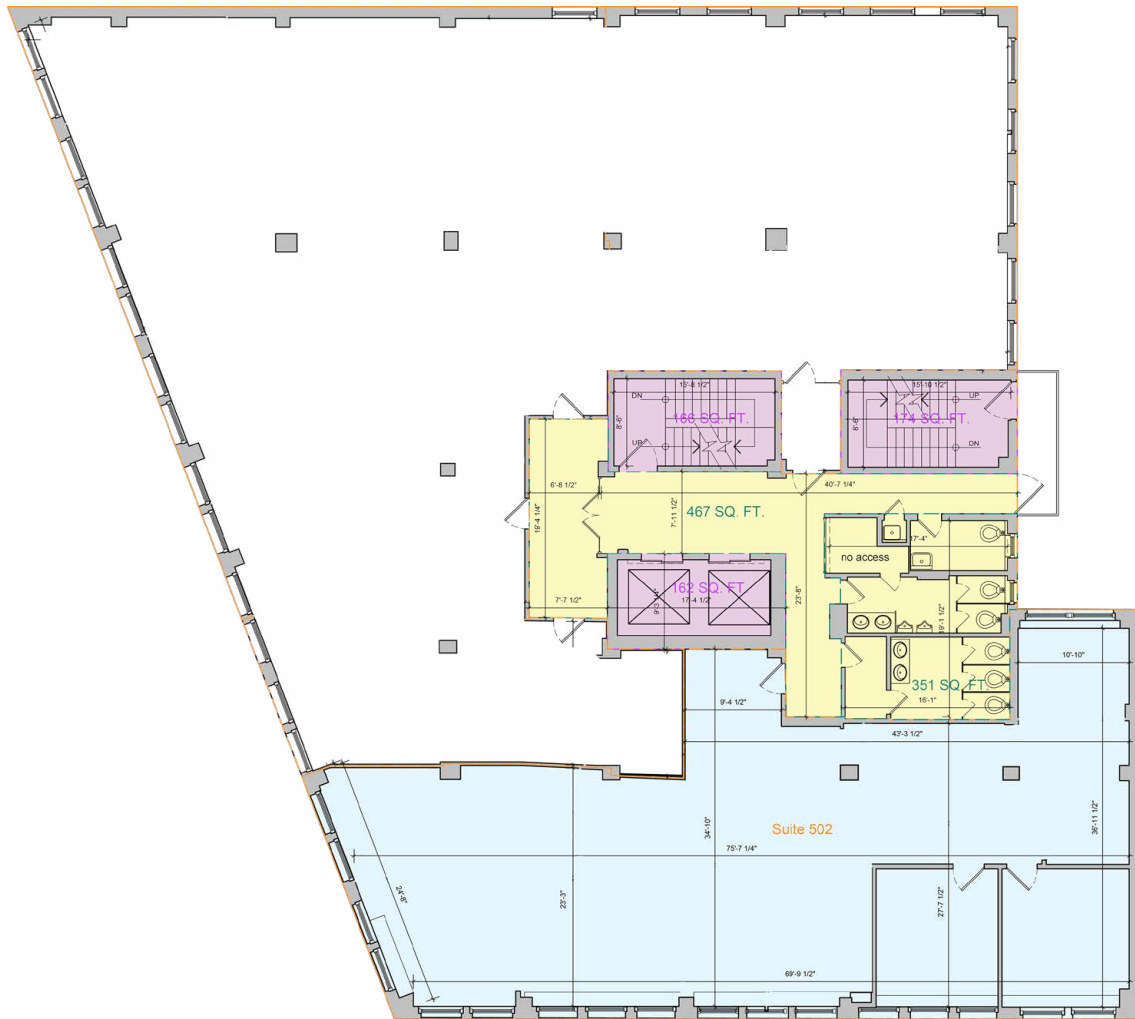
1220 BROADWAY

SUITE 502



PREMIER LEASING

SUITE 502: **3,772 SF**



FEATURES

- Newly renovated lobby with attended front desk
- Two newly renovated passenger elevators
- One freight elevator
- South-facing office with abundant natural light
- Turn-key office layout — move-in ready
- Flexible use permitted for most office tenants
- Two blocks from Penn Station and Madison Square Park
- Steps from Herald Square subway station



SUITE 502: 3,772 SF



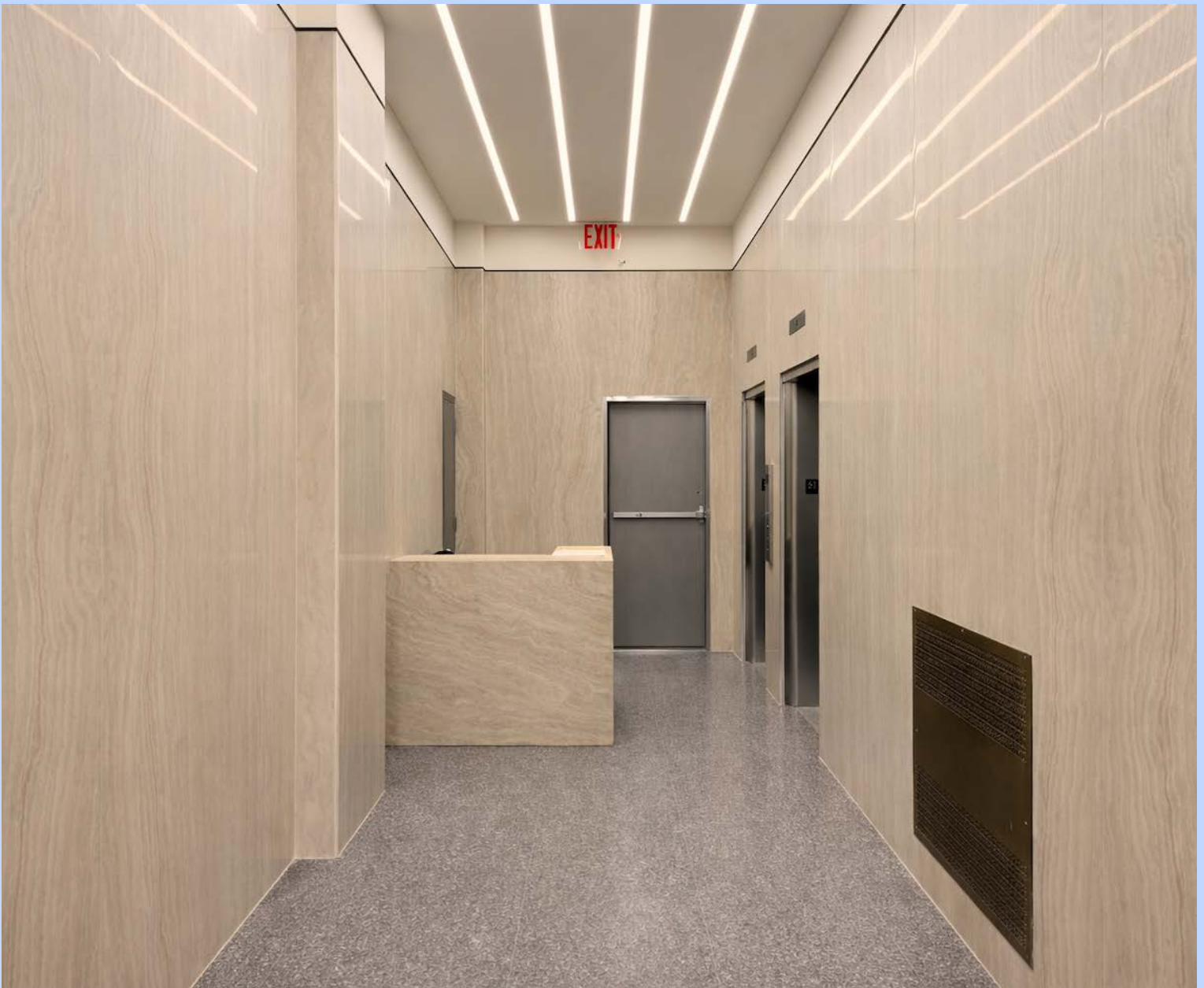
SUITE 502: 3,772 SF



AREA MAP







DAVID JACOBI

P 212 421 3634

M 917 992 9215

david@premierequities.com



PREMIER LEASING