

# Spring Mill

OF  
CONSHOHOCKEN



SPRINGMILL 09

TREAD  
*Forward*

## THE MANSION AT SPRING MILL

East Hector Street and North Lane, Conshohocken, PA

Boasting elegant interiors and an established reputation, the Mansion at Spring Mill Creative Campus offers a truly unique professional environment in the Conshohocken business hub.

- Part of Spring Mill Creative Campus
- Single tenant building
- 3 stories totaling 5,784 sf
- Prominent signage opportunities
- Separate parking lot for building only
- Bathrooms on first and second floor
- Hardwood floors throughout
- Outdoor seating area
- Across the street from Spring Mill train station
- 1.5 miles from I-76 and I-476
- Adjacent to jog/bike path that runs from Valley Forge to Philadelphia

Follow your  
inspiration

Patrick Brady  
Executive Vice President  
+1 215 771 0108  
patrick.brady@am.jll.com

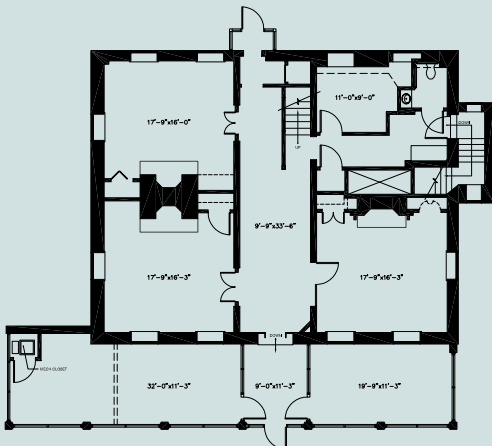
T. Ryan FitzPatrick  
Vice President  
+1 610 639 8980  
TRyan.fitzpatrick@am.jll.com

JLL | Jones Lang LaSalle Brokerage, Inc.  
1235 Westlakes Drive, Suite 210  
Berwyn, PA 19312  
+1 610 249 2255

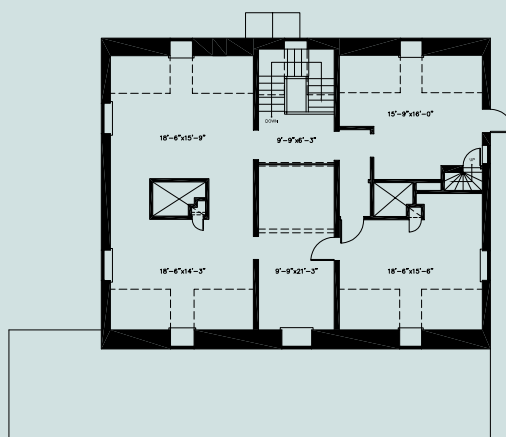
THE MANSION AT SPRING MILL- SPRING MILL CREATIVE CAMPUS- CONSHOHOCKEN, PA



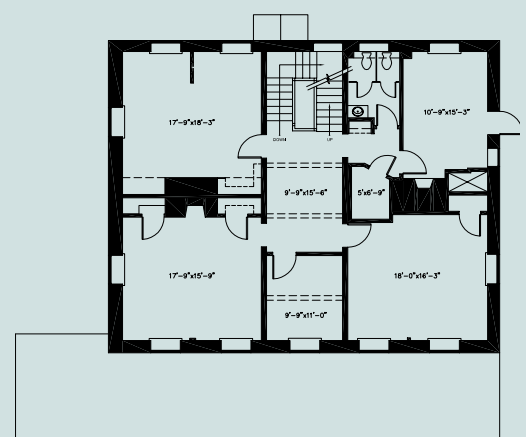
1<sup>ST</sup> FLOOR



2<sup>ND</sup> FLOOR



3<sup>RD</sup> FLOOR



Patrick Brady  
Executive Vice President  
+1 215 771 0108  
patrick.brady@am.jll.com

T. Ryan FitzPatrick  
Vice President  
+1 610 639 8980  
TRyan.fitzpatrick@am.jll.com

JLL | Jones Lang LaSalle Brokerage, Inc.  
1235 Westlakes Drive, Suite 210  
Berwyn, PA 19312  
+1 610 249 2255

Although information has been obtained from sources deemed reliable, neither Owner nor JLL makes any guarantees, warranties or representations, express or implied, as to the completeness or accuracy as to the information contained herein. Any projections, opinions, assumptions or estimates used are for example only. There may be differences between projected and actual results, and those differences may be material. The Property may be withdrawn without notice. Neither Owner nor JLL accepts any liability for any loss or damage suffered by any party resulting from reliance on this information. If the recipient of this information has signed a confidentiality agreement regarding this matter, this information is subject to the terms of that agreement. ©2021. Jones Lang LaSalle IP, Inc. All rights reserved.