

22522 Ventura Boulevard Woodland Hills, CA 91364

RETAIL SUITES FOR LEASE



PACIFIC PARTNERS
COMMERCIAL, INC.

23901 Calabasas Rd., Suite 2024
Calabasas, CA 91302
Office 818.798.3090
Corp ID: #02063112

Lisa Shirliff

Investment Sales & Leasing

Direct: 818.878.8853

lisa@pacificpartnerscre.com

CA DRE: 01891301

The information herein has been furnished from sources which we deem reliable, but has not been verified by Pacific Partners Commercial, Inc. or its agents and for which we assume no liability. This marketing material is to be used for conceptual purposes only. All measurements and numerical data are approximate and to be verified by the prospective buyer.

22522 Ventura Boulevard
Woodland Hills, CA 91364



AVAILABLE FOR LEASE

SUITE NO.	SQUARE FEET	MODIFIED GROSS
22522 (1 st floor)	1,939 SF	\$2.50 MG
22522 (2 nd floor)	665 SF	\$2.50 MG

****Tenant must lease both 1st & 2nd floors**



The plan and its contents are furnished for informational purposes only and are intended only as a general description (but not represented, covenanted or warranted). The size and location of the project, the identity or nature of any occupant and all features, matters and other information included herein are subject to change without notice and should not be relied upon by any party. No representation or warranty, express or implied, is made as to the accuracy or reliability of this plan or its contents.



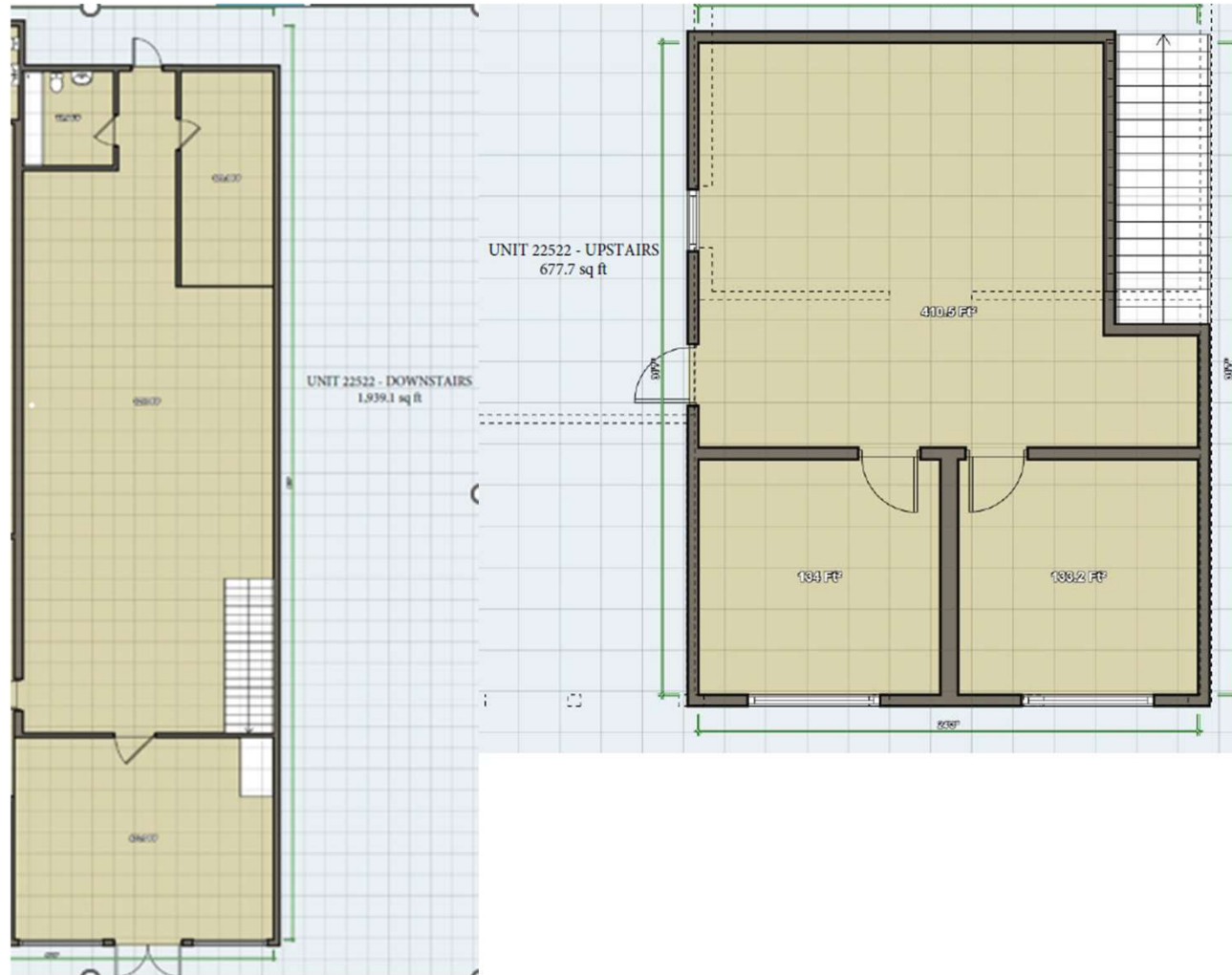
Lisa Shirliff
Investment Sales & Leasing
Direct: 818.878.8853
Lisa@pacificpartnerscre.com
CA DRE: 01891301

PACIFIC PARTNERS COMMERCIAL
23901 Calabasas Rd., Suite 2024
Calabasas, CA 91302
Office 818.798.3090

22522 Ventura Boulevard
Woodland Hills, CA 91364



AVAILABLE FOR LEASE



The plan and its contents are furnished for informational purposes only and are intended only as a general description (but not represented, covenanted or warranted). The size and location of the project, the identity or nature of any occupant and all features, matters and other information included herein are subject to change without notice and should not be relied upon by any party. No representation or warranty, express or implied, is made as to the accuracy or reliability of this plan or its contents.



Lisa Shirliff
Investment Sales & Leasing
Direct: 818.878.8853
Lisa@pacificpartnerscre.com
CA DRE: 01891301

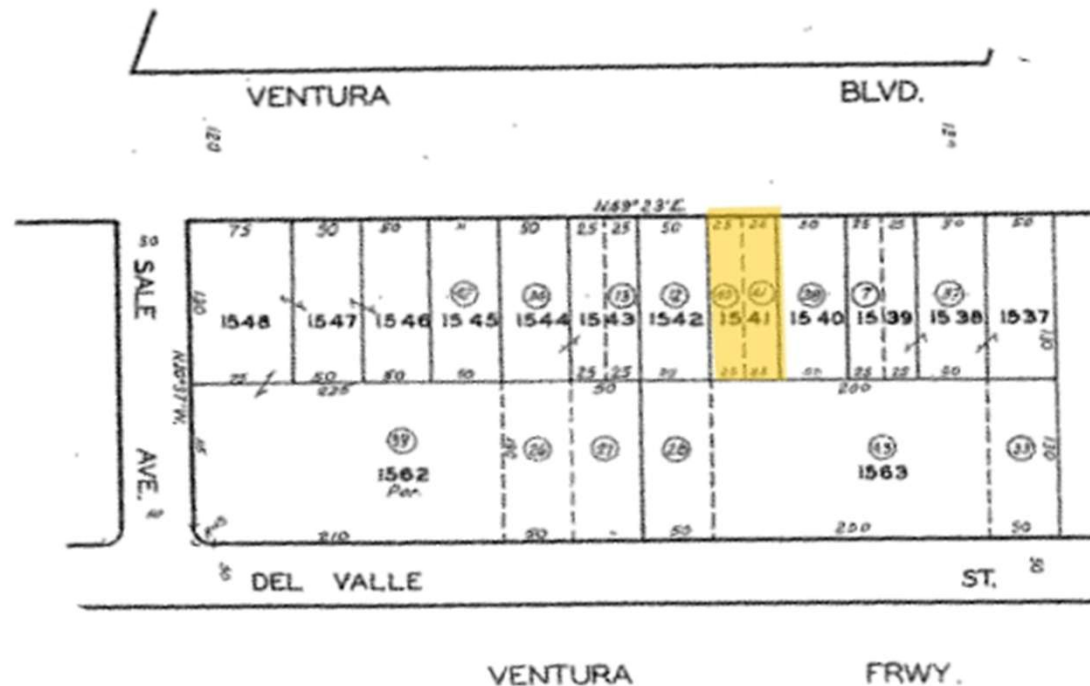
PACIFIC PARTNERS COMMERCIAL
23901 Calabasas Rd., Suite 2024
Calabasas, CA 91302
Office 818.798.3090

22522 Ventura Boulevard
Woodland Hills, CA 91364



Plat Map

- *Prime Woodland Hills Location on Ventura Blvd.
- *Rare Large Monument Sign Space
- *Traffic Vehicle Counts: +35,000/Daily

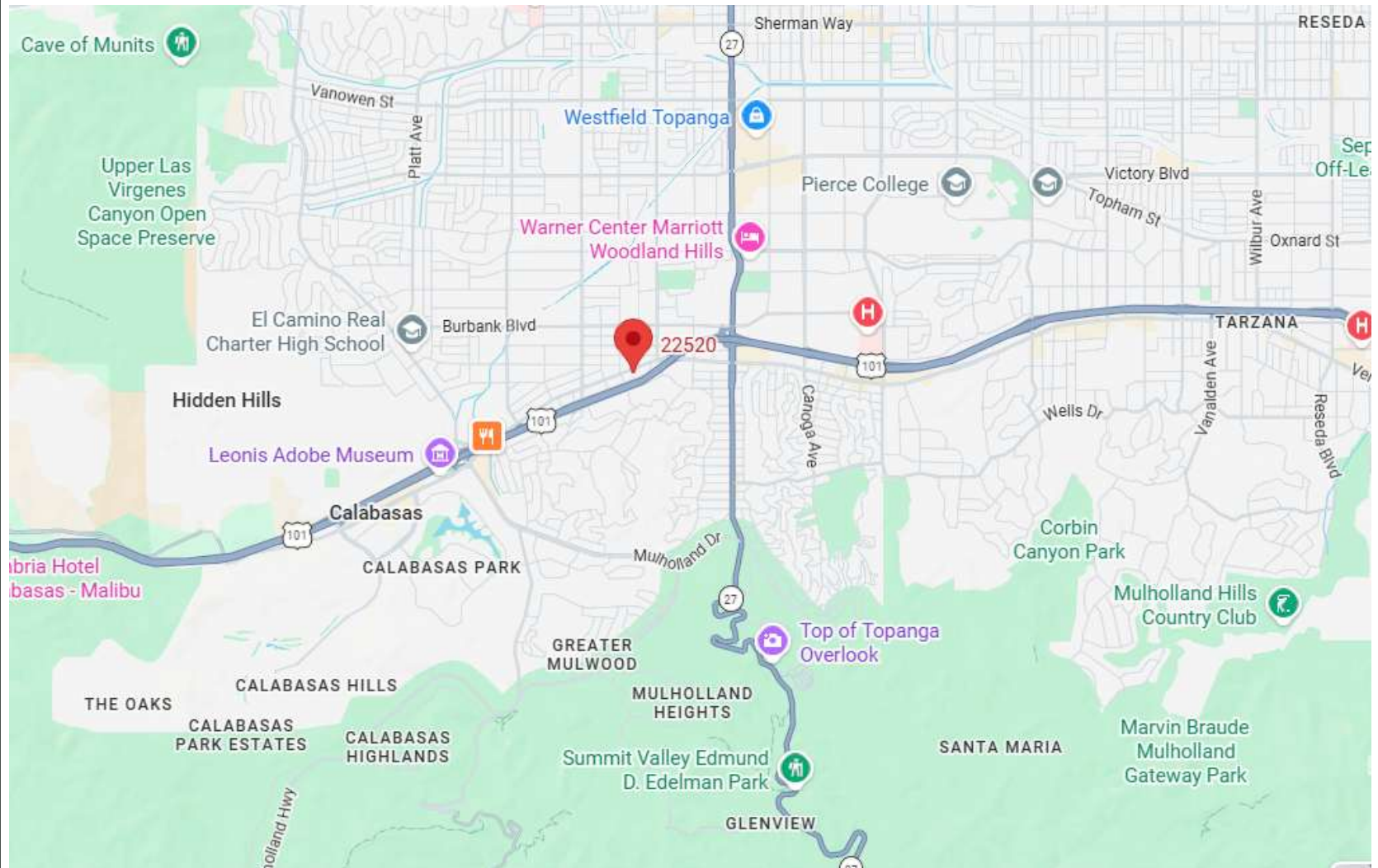


Lisa Shirliff
Investment Sales & Leasing
Direct: 818.878.8853
Lisa@pacificpartnerscre.com
CA DRE: 01891301

PACIFIC PARTNERS COMMERCIAL
23901 Calabasas Rd., Suite 2024
Calabasas, CA 91302
Office 818.798.3090

22522 Ventura Boulevard
Woodland Hills, CA 91364

Map Overview



Lisa Shirliff

Investment Sales & Leasing

Direct: 818.878.8853

Lisa@pacificpartnerscre.com

CA DRE: 01891301

PACIFIC PARTNERS COMMERCIAL

23901 Calabasas Rd., Suite 2024

Calabasas, CA 91302

Office 818.798.3090