



± 3,900 SF of Medical Office Suites for Lease in Orange

- Beautiful exterior renovation completed in 2021
- Within Walking Distance to St. Joseph Hospital and CHOC in Orange County
- Free on-site parking
- On-site Maintenance Staff
- Lease rate \$4.00/MG per square foot
- Excellent Access to the 22, 55, 57, and 5 Freeways

Spaces Available

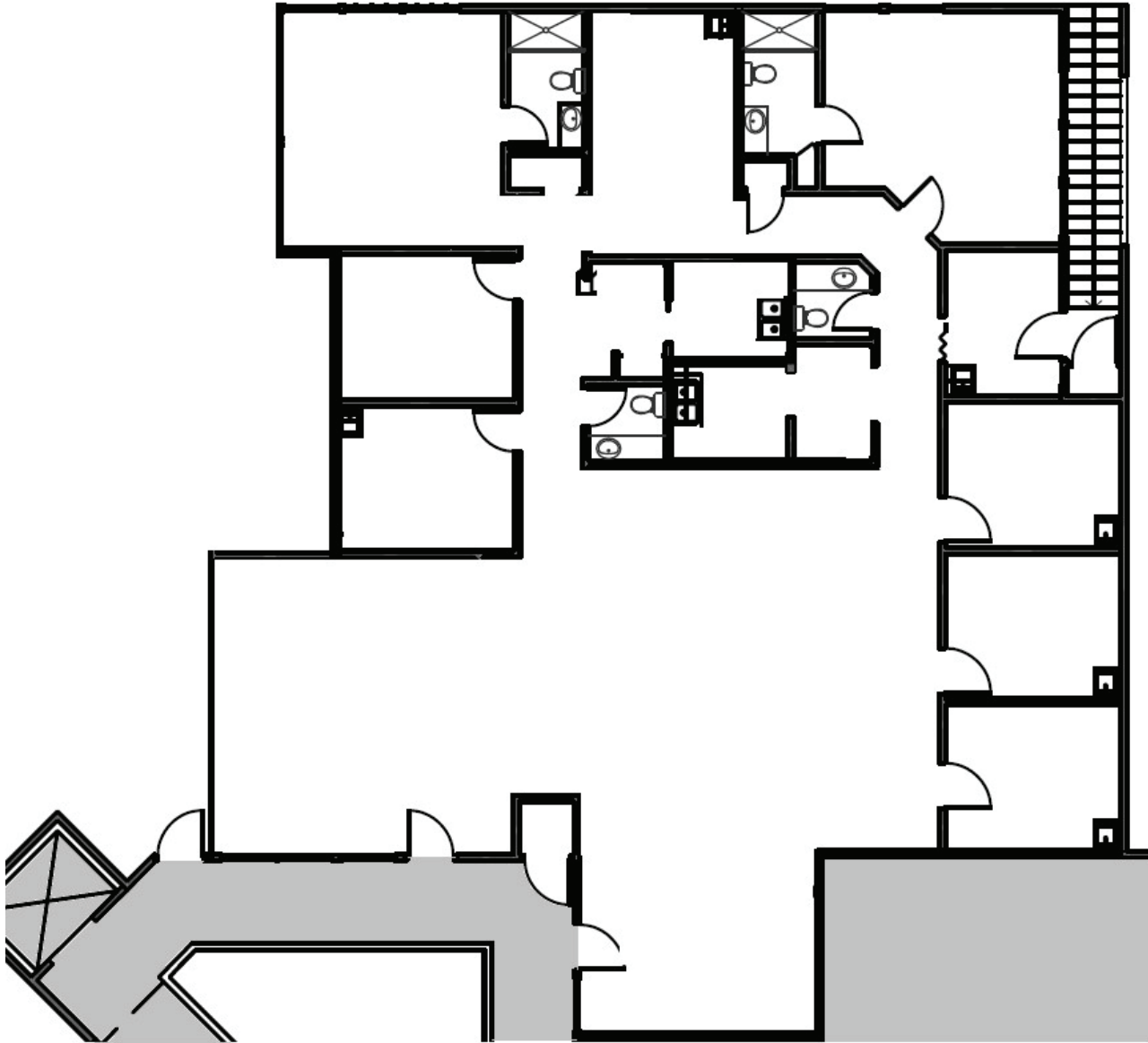
Suite	Floor	Size (SF)
Suite 210-B	2nd Floor	± 3,900 SF

For leasing information please contact:

Eileen Doody

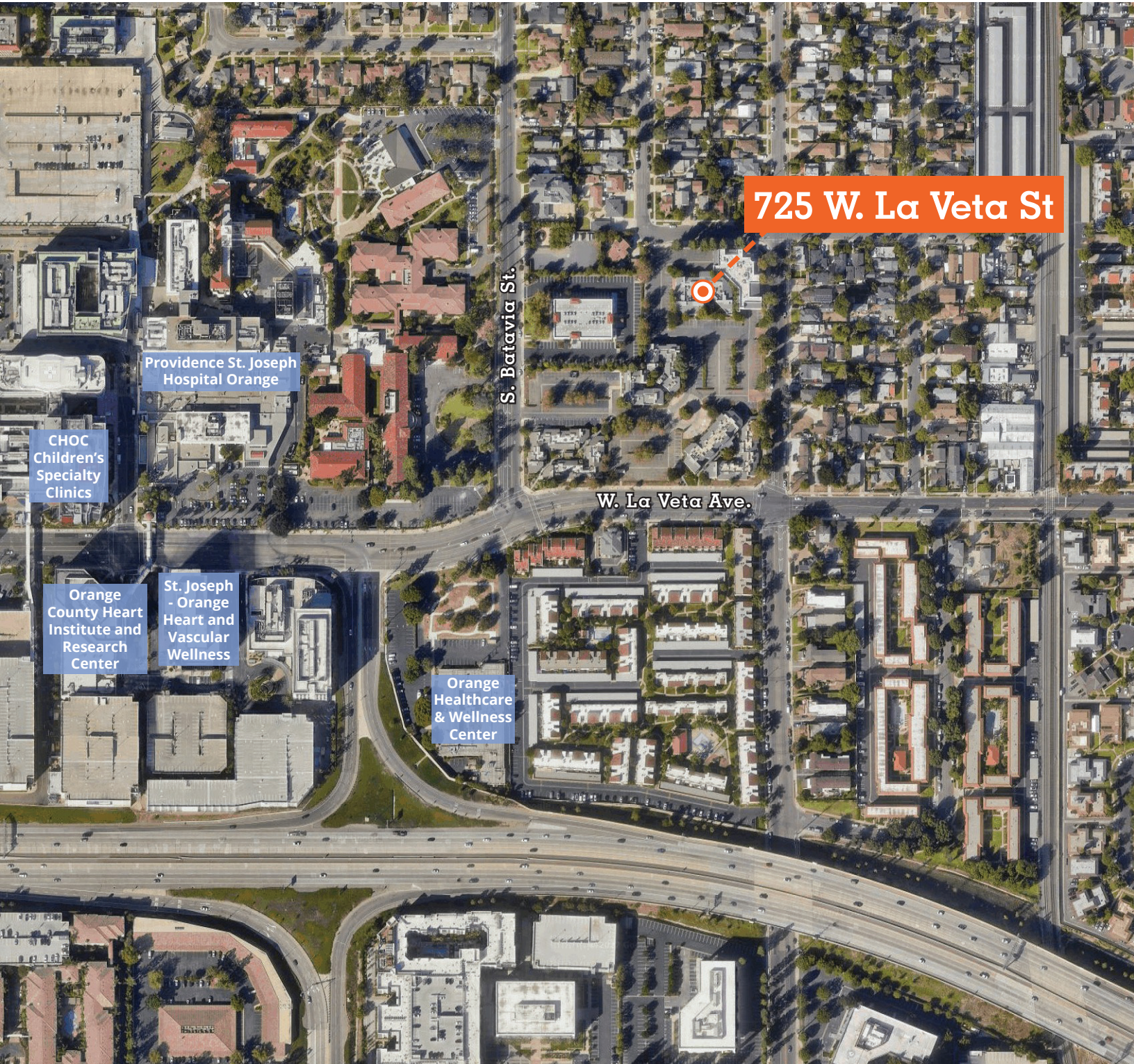
Principal, Healthcare, Leasing and Brokerage
eileen.doody@avisonyoung.com
D: 949.390.5506
CA DRE Lic. #00965140

Suites 210-B | ± 3,900 SF



Medical Office Space for Lease

725 West La Veta
Orange, CA 92868



725 W. La Veta St

Providence St. Joseph
Hospital Orange

CHOC
Children's
Specialty
Clinics

S. Batavia St.

W. La Veta Ave.

Orange
County Heart
Institute and
Research
Center

St. Joseph
- Orange
Heart and
Vascular
Wellness

Orange
Healthcare
& Wellness
Center