

3901

LENNANE DR.
SACRAMENTO, CA



OFFICE SPACE FOR LEASE

NEWMARK

KIRK LANGE

Senior Managing Director
916.569.2331
kirk.lange@nmrk.com
CA RE License #00870313

TODD ESCHELMAN

Executive Managing Director
916.569.2347
todd.eschelman@nmrk.com
CA RE License #01051148

PROPERTY HIGHLIGHTS



±11,000 - ±44,000 SF space available



4.00/1,000 RSF parking spaces



Surrounded by numerous restaurants & retail options



Adjacent to new Westin Hotel



Building & Monument signage



Excellent freeway access to I-80 & I-5



10 Minutes to Sacramento International Airport & Downtown Sacramento



PROPERTY PHOTOS

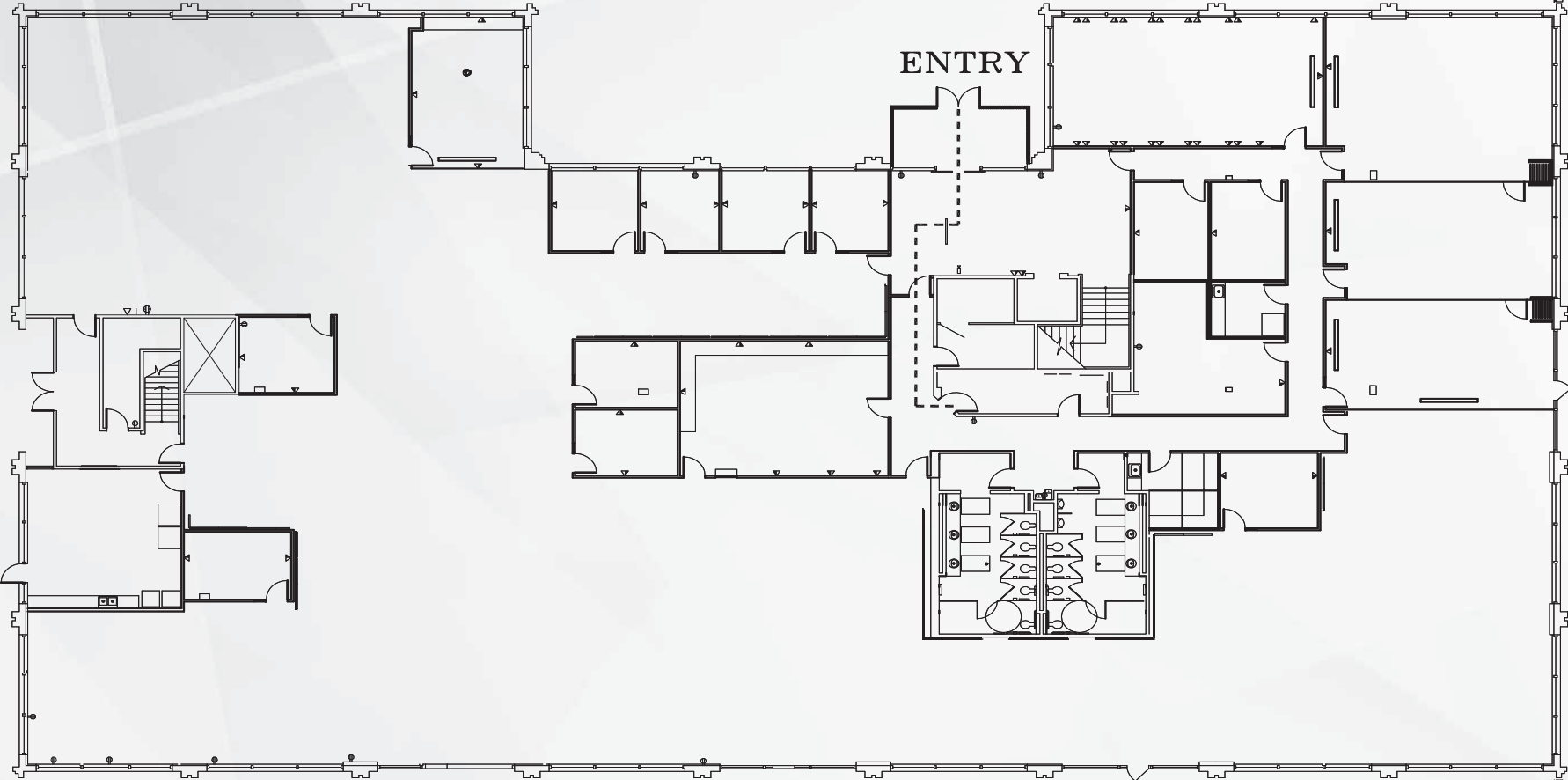




3901 LENNANE DRIVE, SACRAMENTO

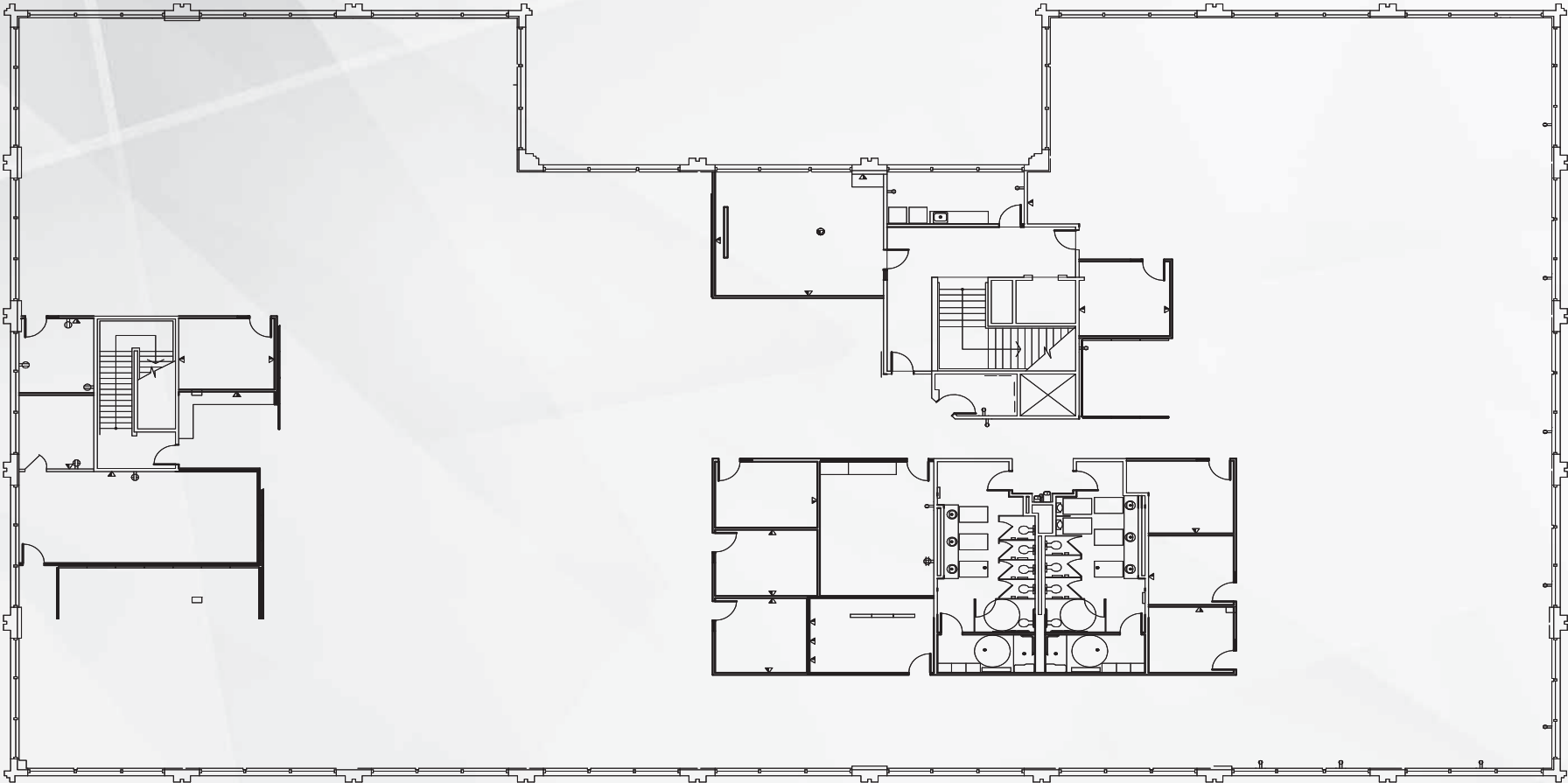
FLOOR PLAN

First Floor
±11,000 - ±22,000 RSF Available



FLOOR PLAN

Second Floor
±11,000 - ±22,000 RSF Available





3901 LENNANE DRIVE, SACRAMENTO

LOCATION AERIAL



3901
LENNANE DR



3901

LENNANE DR.
SACRAMENTO, CA

KIRK LANGE

Senior Managing Director
916.569.2331

kirk.lange@nmrk.com
CA RE License #00870313

TODD ESCHELMAN

Executive Managing Director
916.569.2347

todd.eschelman@nmrk.com
CA RE License #01051148