

LIVINGSTON, NJ

620 NEW JERSEY 10, LIVINGSTON, NJ 07039

18,176 SF



OFFERING SUMMARY

Available SF: 18,716 SF

Lease Rate: Call For Details

NEIGHBORING TENANTS



PROPERTY OVERVIEW

Freestanding Building For Lease on Route 10

PROPERTY HIGHLIGHTS

- 18,716 SF Freestanding Building on 2.32 Acres
- Will Divide
- Prime Retail Site in Strong Retail Corridor
- Excellent Exposure on Route 10
- 73 Parking Spaces
- Located at a Signalized Intersection
- ~30,000 VPD

FOR MORE INFORMATION CONTACT:

NEIL GOLDSTEIN
201.703.9700 x112
ngoldstein@thegoldsteingroup.com

Licensed Real Estate Broker | 45 EISENHOWER DRIVE | SUITE 246 | PARAMUS, NJ 07652

THEGOLDSTEINGROUP.COM

All information is from sources deemed reliable and is submitted subject to errors, omissions, change of price, terms, rental, prior sale and withdrawal without notice.

LIVINGSTON, NJ

620 NEW JERSEY 10, LIVINGSTON, NJ 07039



FOR MORE INFORMATION CONTACT:

NEIL GOLDSTEIN

201.703.9700 x112

ngoldstein@thegoldsteingroup.com

Licensed Real Estate Broker | 45 EISENHOWER DRIVE | SUITE 246 | PARAMUS, NJ 07652

THEGOLDSTEINGROUP.COM

All information is from sources deemed reliable and is submitted subject to errors, omissions, change of price, terms, rental, prior sale and withdrawal without notice.

LIVINGSTON, NJ

620 NEW JERSEY 10, LIVINGSTON, NJ 07039



FOR MORE INFORMATION CONTACT:

NEIL GOLDSTEIN

201.703.9700 x112

ngoldstein@thegoldsteingroup.com

Licensed Real Estate Broker | 45 EISENHOWER DRIVE | SUITE 246 | PARAMUS, NJ 07652

THEGOLDSTEINGROUP.COM

All information is from sources deemed reliable and is submitted subject to errors, omissions, change of price, terms, rental, prior sale and withdrawal without notice.

LIVINGSTON, NJ

620 NEW JERSEY 10, LIVINGSTON, NJ 07039



FOR MORE INFORMATION CONTACT:

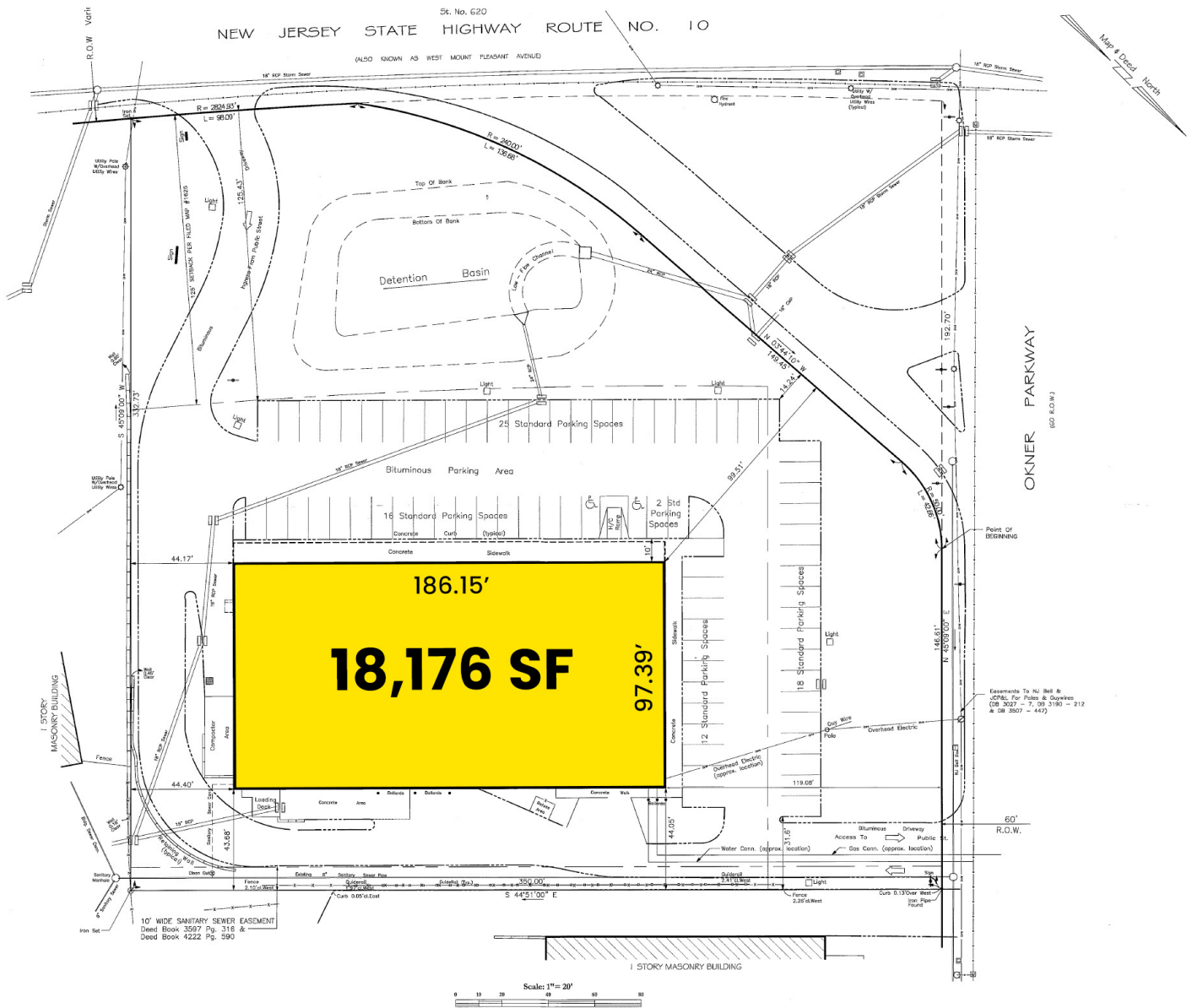
NEIL GOLDSTEIN
201.703.9700 x112
ngoldstein@thegoldsteingroup.com

Licensed Real Estate Broker | 45 EISENHOWER DRIVE | SUITE 246 | PARAMUS, NJ 07652

THEGOLDSTEINGROUP.COM

All information is from sources deemed reliable and is submitted subject to errors, omissions, change of price, terms, rental, prior sale and withdrawal without notice.

LIVINGSTON, NJ
 620 NEW JERSEY 10, LIVINGSTON, NJ 07039



FOR MORE INFORMATION CONTACT:

NEIL GOLDSTEIN
 201.703.9700 x112
 ngoldstein@thegoldsteingroup.com

Licensed Real Estate Broker | 45 EISENHOWER DRIVE | SUITE 246 | PARAMUS, NJ 07652

THEGOLDSTEINGROUP.COM

All information is from sources deemed reliable and is submitted subject to errors, omissions, change of price, terms, rental, prior sale and withdrawal without notice.

LIVINGSTON, NJ

620 NEW JERSEY 10, LIVINGSTON, NJ 07039



FOR MORE INFORMATION CONTACT:

NEIL GOLDSTEIN

201.703.9700 x112

ngoldstein@thegoldsteingroup.com

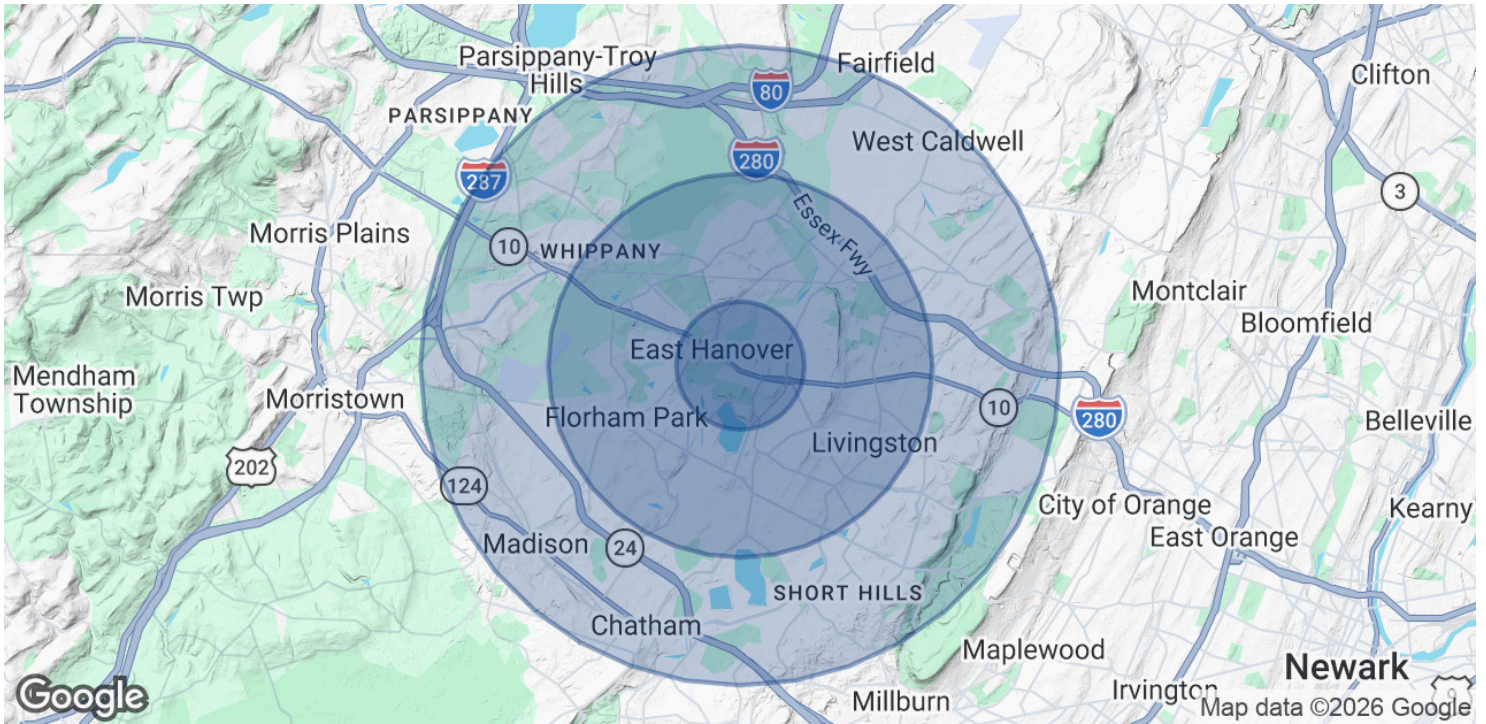
Licensed Real Estate Broker | 45 EISENHOWER DRIVE | SUITE 246 | PARAMUS, NJ 07652

THEGOLDSTEINGROUP.COM

All information is from sources deemed reliable and is submitted subject to errors, omissions, change of price, terms, rental, prior sale and withdrawal without notice.

LIVINGSTON, NJ

620 NEW JERSEY 10, LIVINGSTON, NJ 07039



POPULATION	1 MILE	3 MILES	5 MILES
Total Population	4,482	49,706	155,213
Average Age	46	44	42
Average Age (Male)	45	42	41
Average Age (Female)	48	45	43

HOUSEHOLDS & INCOME	1 MILE	3 MILES	5 MILES
Total Households	1,663	17,548	55,383
# of Persons per HH	2.7	2.8	2.8
Average HH Income	\$215,382	\$228,912	\$227,074
Average House Value	\$882,356	\$849,565	\$895,313

Demographics data derived from AlphaMap

FOR MORE INFORMATION CONTACT:

NEIL GOLDSTEIN
201.703.9700 x112
ngoldstein@thegoldsteingroup.com