

FOR LEASE

102, 10359 104 STREET



NEW
NEW
NEW

102, 10359 104 Street | Edmonton AB

PROPERTY HIGHLIGHTS

- ✦ 2501.80 Square Feet
- ✦ Stylish and modern interior
- ✦ Strong pedestrian traffic
- ✦ Close proximity to Edmonton's downtown core, office towers, Rogers Place, ICE District, and surrounding residential density.



David J. Olson
Director
MUVE Commercial/EXP Realty
Mobile: (780)908-1650
Email: Davidolson@muveteam.com

FOR LEASE



ADDITIONAL INFORMATION

HOSPITALITY FOR LEASE

LEGAL DESCRIPTION: Plan: B-1
Block: 3
Lot: 188

AVAILABLE: Negotiable

COMMUNITY: Downtown

TRAFFIC: High pedestrian traffic with excellent proximity to Edmonton's downtown core.

ASKING RATE: Negotiable



müve
TEAM

David J. Olson
Director
MUVE Commercial/EXP Realty
Mobile: (780)908-1650
Email: Davidolson@muveteam.com

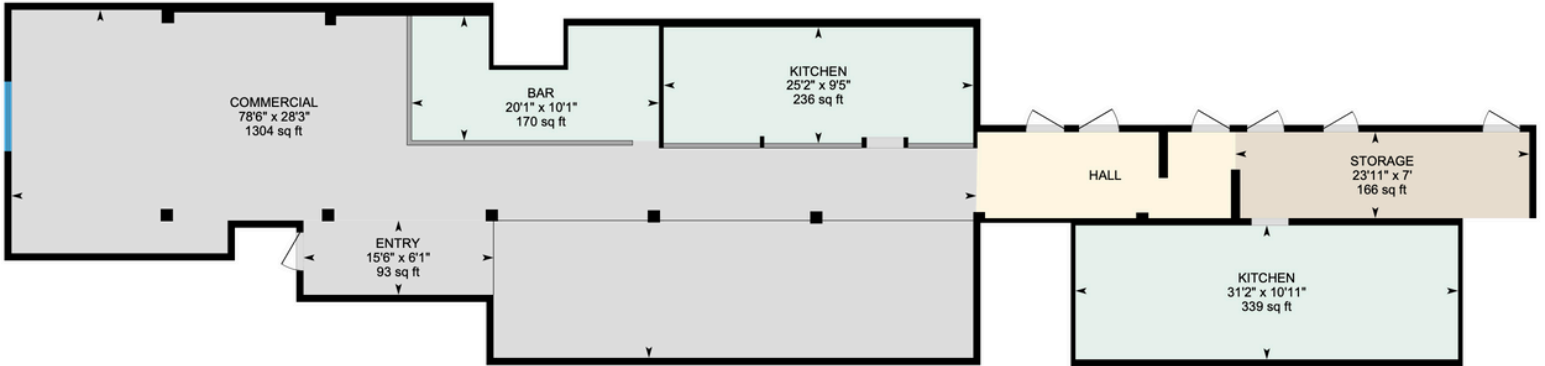


FOR LEASE



#202, #205 10441-124 Street

2501.80 SQ FT



David J. Olson
Director
MUVE Commercial/EXP Realty
Mobile: (780)908-1650
Email: Davidolson@muveteam.com