

Industrial | For Lease

CBRE

1780 Industrial Dr.

Auburn, CA 95603
www.cbre.com/shana.lennon

±1,800 SF Available

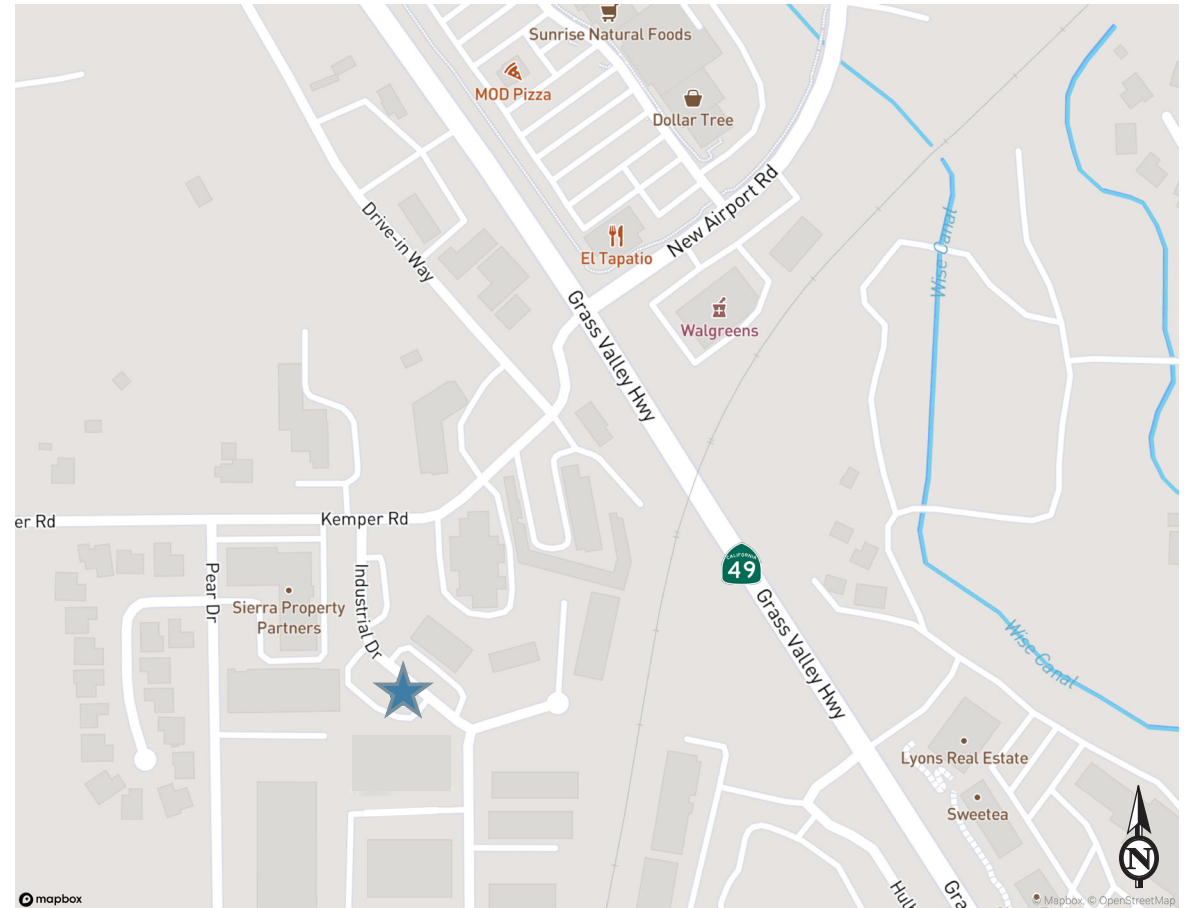


Contact

Shana Lennon
First Vice President
+1 916 781 4868
shana.lennon@cbre.com
Lic. 01446203

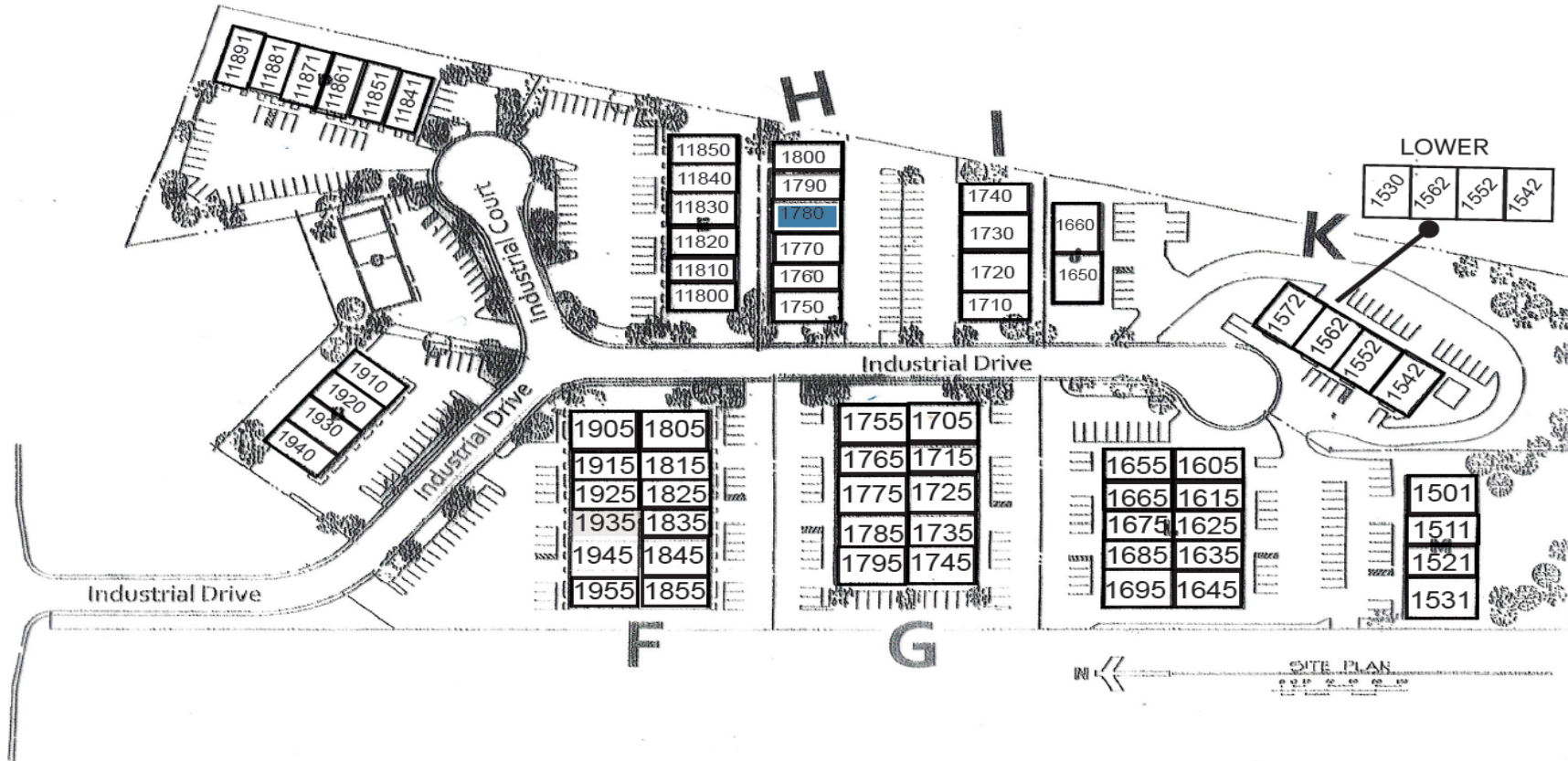
Property Information

- \$0.85 PSF / Per Month Modified Gross
- ±1,800 SF Available
- Standard warehouse with ±200 SF of office space
- 10' x 10' roll up warehouse door
- HVAC in office mini split system
- Electrical: 110A, 3-phase panel



CAGLE PROPERTIES, LLC

Buildings F, G, H, I, K
owned and managed by Cagle Properties, LLC



KEMPER BUSINESS PARK

© 2026 CBRE, Inc. All rights reserved. This information has been obtained from sources believed reliable, but has not been verified for accuracy or completeness. You should conduct a careful, independent investigation of the property and verify all information. Any reliance on this information is solely at your own risk. CBRE and the CBRE logo are service marks of CBRE, Inc. All other marks displayed on this document are the property of their respective owners, and the use of such logos does not imply any affiliation with or endorsement of CBRE. Photos herein are the property of their respective owners. Use of these images without the express written consent of the owner is prohibited.

