

FOR LEASE

EDEN PLAZA

*Multiple Warehouse Units
For Lease in Hayward, CA*

*3 Months Free Rent on 3 Year Leases
& 6 Months Free Rent on 5 Year Leases*



EDEN PLAZA

Eden Plaza Contains High Quality Warehouse Units with Direct Access to Highway 92



AVAILABLE FOR LEASE

LEE & ASSOCIATES | KIDDER MATHEWS



Property Highlights

Seven-building industrial park

Wide variety of suite sizes and configurations

First exit off the San Mateo bridge (SR-92)

Eleven miles to the San Francisco Peninsula

Twelve miles to Oakland International Airport

Eighteen miles to San Francisco International Airport

New ownership by Black Mountain Properties, LLC

±29,278 SF

TOTAL SPACE AVAILABLE

\$1.45

LEASE RATE, PSF NNN

EDEN PLAZA

CONVENIENT. COMPETITIVE. WAREHOUSE.



SUITE AVAILABILITY

Address	Suite	Size	NNN	Expenses	Date Available
26120 EDEN LANDING RD	Suite 2	±2,852 SF	\$1.25 PSF, NNN	\$0.63	Now
26120 EDEN LANDING RD	Suite 3	±2,217 SF	\$1.45 PSF, NNN	\$0.63	Now
3521 INVESTMENT BLVD	Suite 1	±4,640 SF	\$1.25 PSF, NNN	\$0.63	Now
3541 INVESTMENT BLVD	Suite 5	±2,695 SF	\$1.25 PSF, NNN	\$0.63	Now
26102 EDEN LANDING RD	Suite 3	±11,605 SF	\$1.25 PSF, NNN	\$0.63	Now
Total SF Available For Lease		±29,278 SF			

SITE PLAN

26120 EDEN LANDING RD
Suite 2 | ±2,852 SF

26120 EDEN LANDING RD
Suite 3 | ±2,217 SF

3541 INVESTMENT BLVD
Suite 5 | ±2,695 SF

3521 INVESTMENT BLVD
Suite 1 | ±4,640 SF

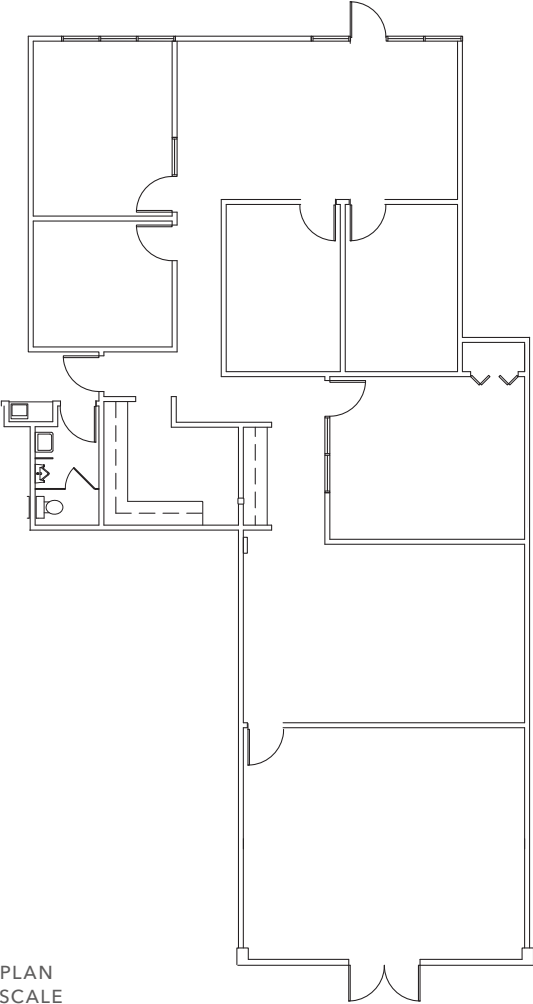
26102 EDEN LANDING RD
Suite 3 | ±11,605 SF



INVESTMENT BLVD

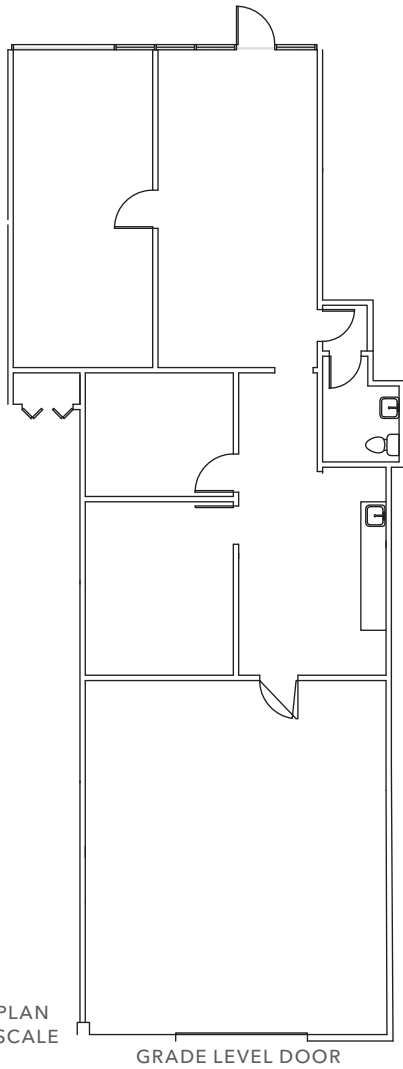
SITE PLAN NOT TO SCALE

26120 EDEN LANDING RD SUITE 2 | ±2,852 SF

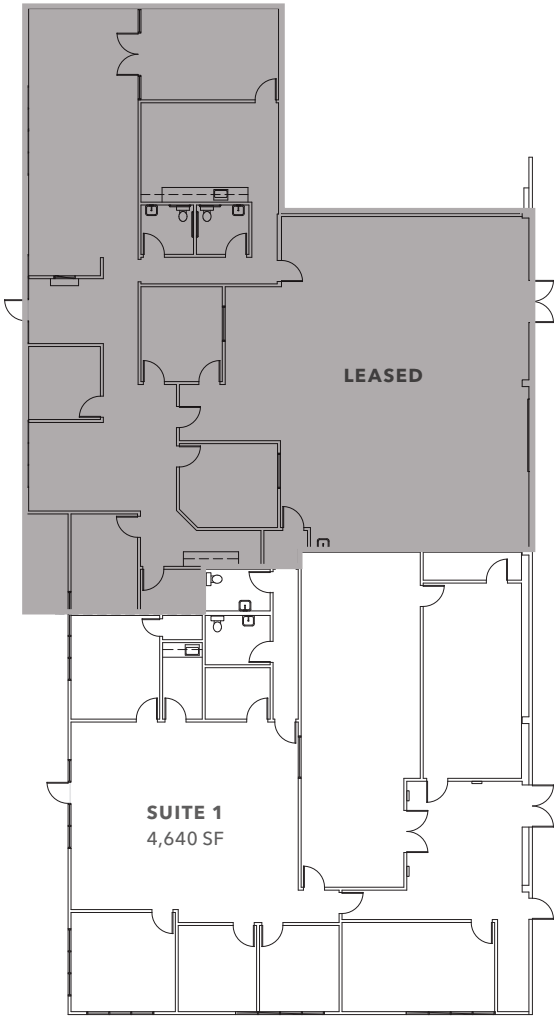


FLOOR PLAN
NOT TO SCALE

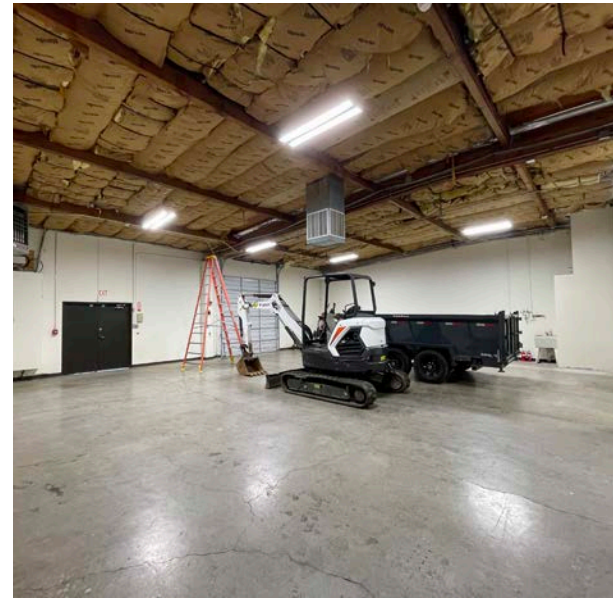
26120 EDEN LANDING RD SUITE 3 | ±2,217 SF



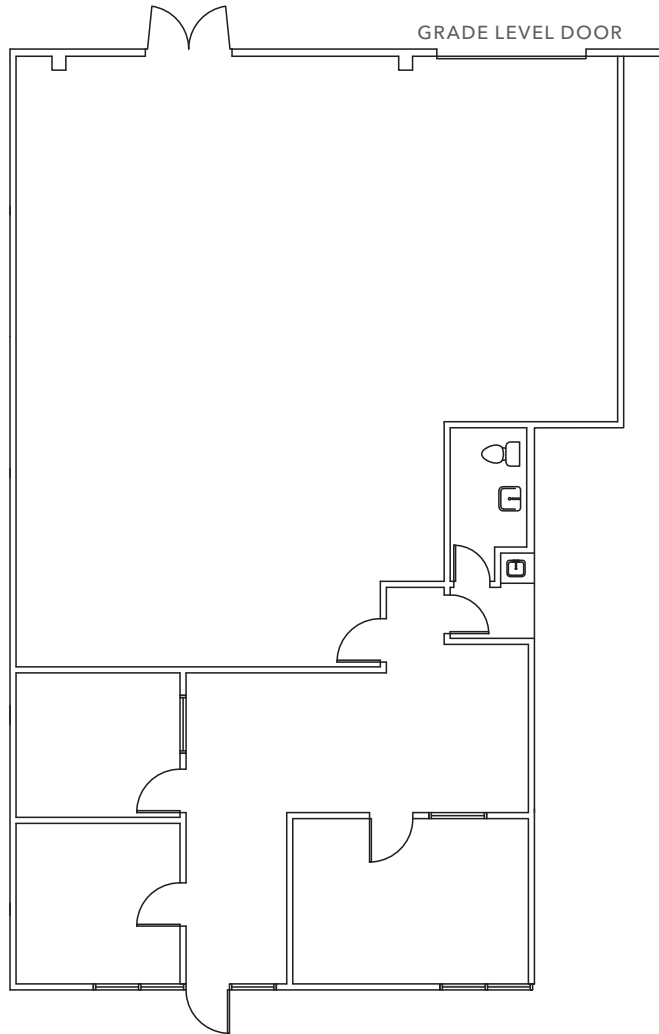
3521 INVESTMENT BLVD SUITE 1 | ±4,640 SF TOTAL



FLOOR PLAN NOT TO SCALE



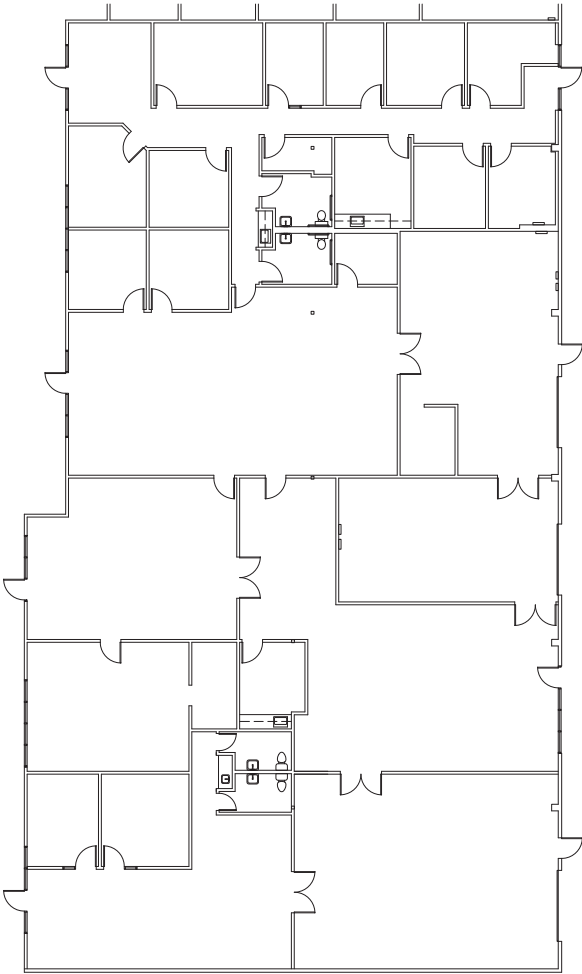
3541 INVESTMENT BLVD SUITE 5 | ±2,695 SF



FLOOR PLAN NOT TO SCALE



26102 EDEN LANDING RD SUITE 3 | ±11,605 SF



FLOOR PLAN NOT TO SCALE



Exclusively listed by

JOHN MCLELLAN

Kidder Mathews

415.418.9880

john.mclellan@kidder.com

LIC N° 01869489

DREW RAMIREZ

Kidder Mathews

650.430.1433

drew.ramirez@kidder.com

LIC N° 02209477

CHRIS SCHOFIELD, SIOB

Lee & Associates

510.903.7608

cschofield@lee-associates.com

LIC N° 01326198

KIDDER.COM