

SEVENTY SEVEN PETER

RETAIL FOR LEASE



GROUND LEVEL RETAIL FOR LEASE IN THE HEART OF TORONTO'S ENTERTAINMENT DISTRICT

CBRE urban retail team



SEVENTY SEVEN PETER

FOR LEASE

Property Details

Address: 77 Peter Street, Toronto

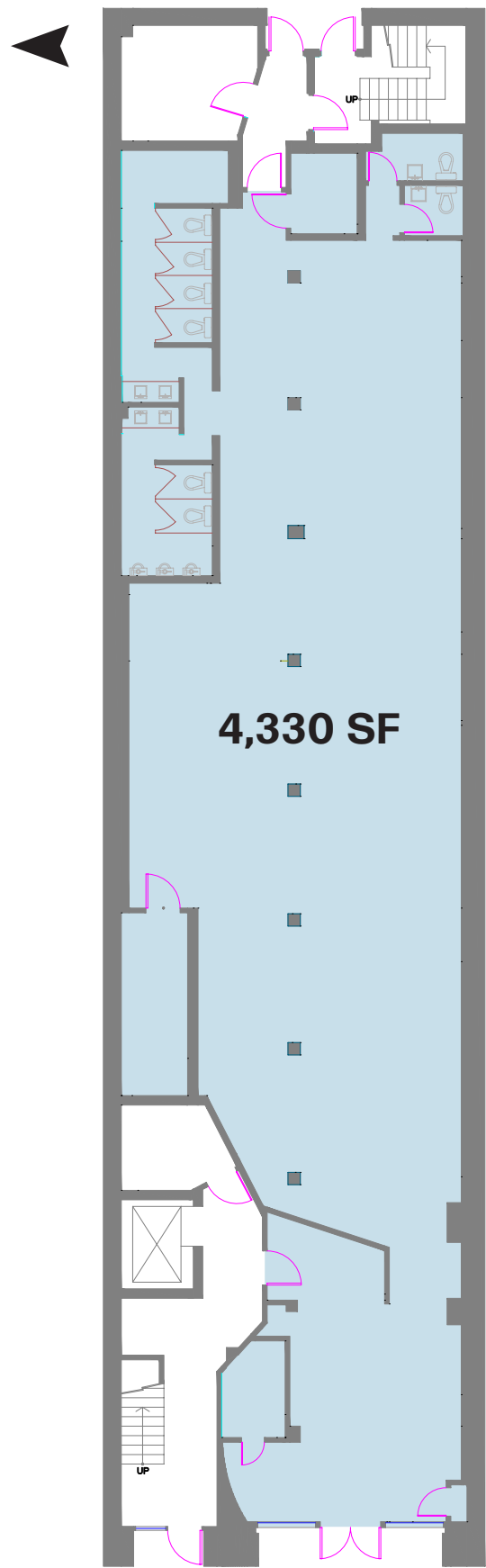
Size: 4,330 sq. ft.

Net Rent: Please contact listing agents

TMI: \$13.50 per sq. ft. (est. 2024)

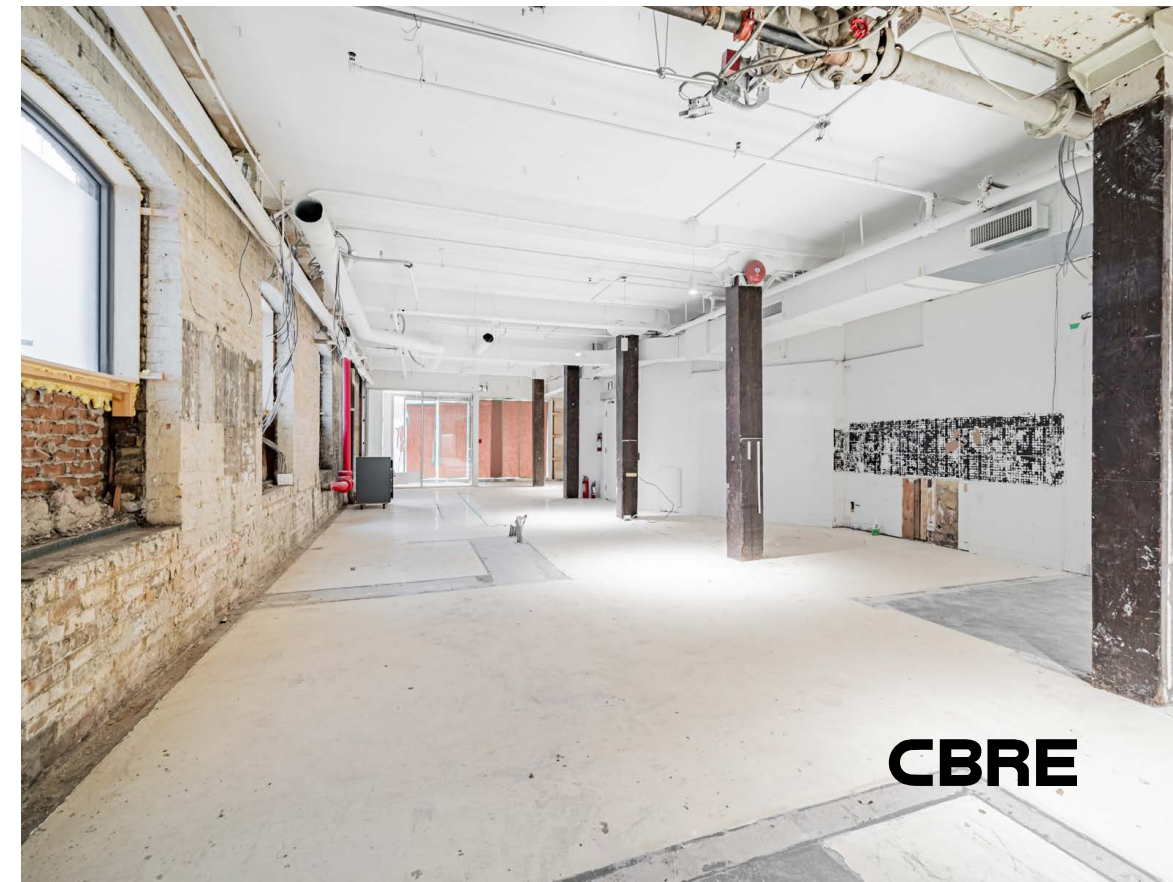
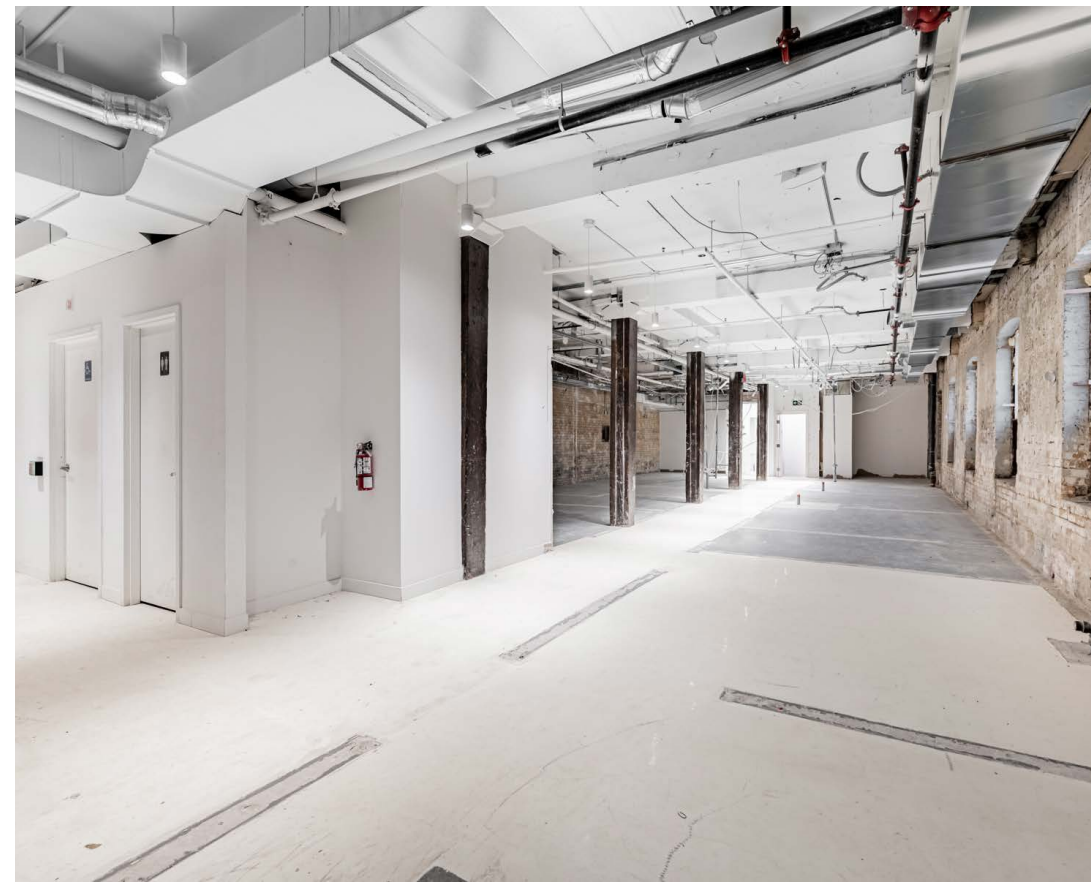
Available: Immediately

- Incredible downtown location in the heart of The Entertainment District just north of the intersection of King and Peter
- Located directly next door to a public parking lot
- Steps to King West, Queen West and The Financial Core
- Close to Osgoode and St. Andrew subway stations as well as an entrance to the PATH network
- Suitable for a variety of retail and office uses
- Neighbouring retailers and traffic drivers include: The Rogers Centre, TIFF Bell Lightbox, Princess of Wales Theatre, Shoppers Drug Mart, Bisha Hotel, Scotiabank Theatre, Hyatt Regency and many more



4,330 SF

PETER STREET



CBRE



FINANCIAL CORE

SCOTIABANK ARENA

RIPLEY'S AQUARIUM

ROGERS CENTRE

ROY THOMPSON HALL

TIFF BELL LIGHTBOX

SEVENTY SEVEN
PETER
FOR LEASE

KING STREET WEST

NATHAN PHILLIPS SQUARE

SCOTIABANK THEATRE

QUEEN RICHMOND CENTRE

QUEEN STREET WEST

NORTHEASTERN UNIVERSITY

SPADINA AVENUE

MOUNTAIN EQUIPMENT CO-OP

FUTURE QUEEN/SPADINA
SUBWAY STATION

The Location

77 Peter occupies a premier street-front location on Peter Street in the rapidly growing node of Downtown West in Toronto's urban core. It is located steps off of King West, and in close proximity to Queen West, two of the main retail streets in Toronto, known for the city's largest concentration of shops, restaurants, theatres and nightlife.

The site is surrounded by some of Toronto's top attractions, hotels and points-of-interest including Tiff Bell Lightbox, Bisha Hotel, Princess of Wales Theatre, the future NOBU Residences, Rogers Centre, CN Tower, Ripley's Aquarium as well as endless restaurants and bars.

Residential intensification in the area has led to an increased demand for a variety of retail and restaurant concepts, creating a highly competitive leasing environment. High profile retailers and restaurants continue to seek occupancy in Downtown Toronto, driving rental growth, gentrification and redevelopment of the area.

Neighbouring Retailers & Traffic Drivers



Shopping

- 1 Michael's
- 2 Marshalls
- 3 MAC Cosmetics
- 4 Arc'teryx
- 5 Aldo
- 6 Brandy Melville
- 7 Aritzia
- 8 Icebreaker
- 9 MEC
- 10 Lululemon
- 11 Reigning Champ
- 12 Club Monaco
- 13 Adidas Originals
- 14 Kit and Ace
- 15 Shoppers Drug Mart
- 16 Fjallraven
- 17 Casper
- 18 Umbra
- 19 Miniso
- 20 Rexall
- 21 HomeSense
- 22 Shoppers Drug Mart
- 23 Dollarama
- 24 Bulk Bar

Food/Drink

- 1 Figo
- 2 La Carnita
- 3 Parlour
- 4 O&B Canteen
- 5 PAI
- 6 Michael's
- 7 Mott 32
- 8 Soho House
- 9 Byblos
- 10 Pigeon Cafe & Bar
- 11 Bar Hop
- 12 Luma
- 13 District Eatery
- 14 Coffee, Oysters, Champagne
- 15 General Assembly Pizza
- 16 FLOCK
- 17 Tutti Matti
- 18 Aloette
- 19 Alo
- 20 Rivoli
- 21 Peter Pan Bisto
- 22 Bar Hop Brewco
- 23 Planta
- 24 Chipotle
- 25 Starbucks
- 26 Alo
- 27 McDonald's
- 28 What A Bagel
- 29 Miss Likklemore's
- 30 Pink Sky Seafood
- 31 Patria
- 32 The Haam
- 33 Fresh & Wild Food Market
- 34 Wendy's
- 35 Tim Hortons
- 36 Belly Busters
- 37 Imperfect Fresh East
- 38 Abrielle

Entertainment

- 1 TIFF Bell Lightbox
- 2 Scotiabank Theatre
- 3 CBC Headquarters
- 4 Princess of Wales Theatre
- 5 Royal Alexandra Theatre
- 6 Roy Thompson Hall
- 7 Bell Media Headquarters
- 8 Four Seasons Centre
- 9 Ballroom Bowl
- 10 Ripley's Aquarium
- 11 CN Tower
- 12 Rogers Centre
- 13 AGO

Hotels

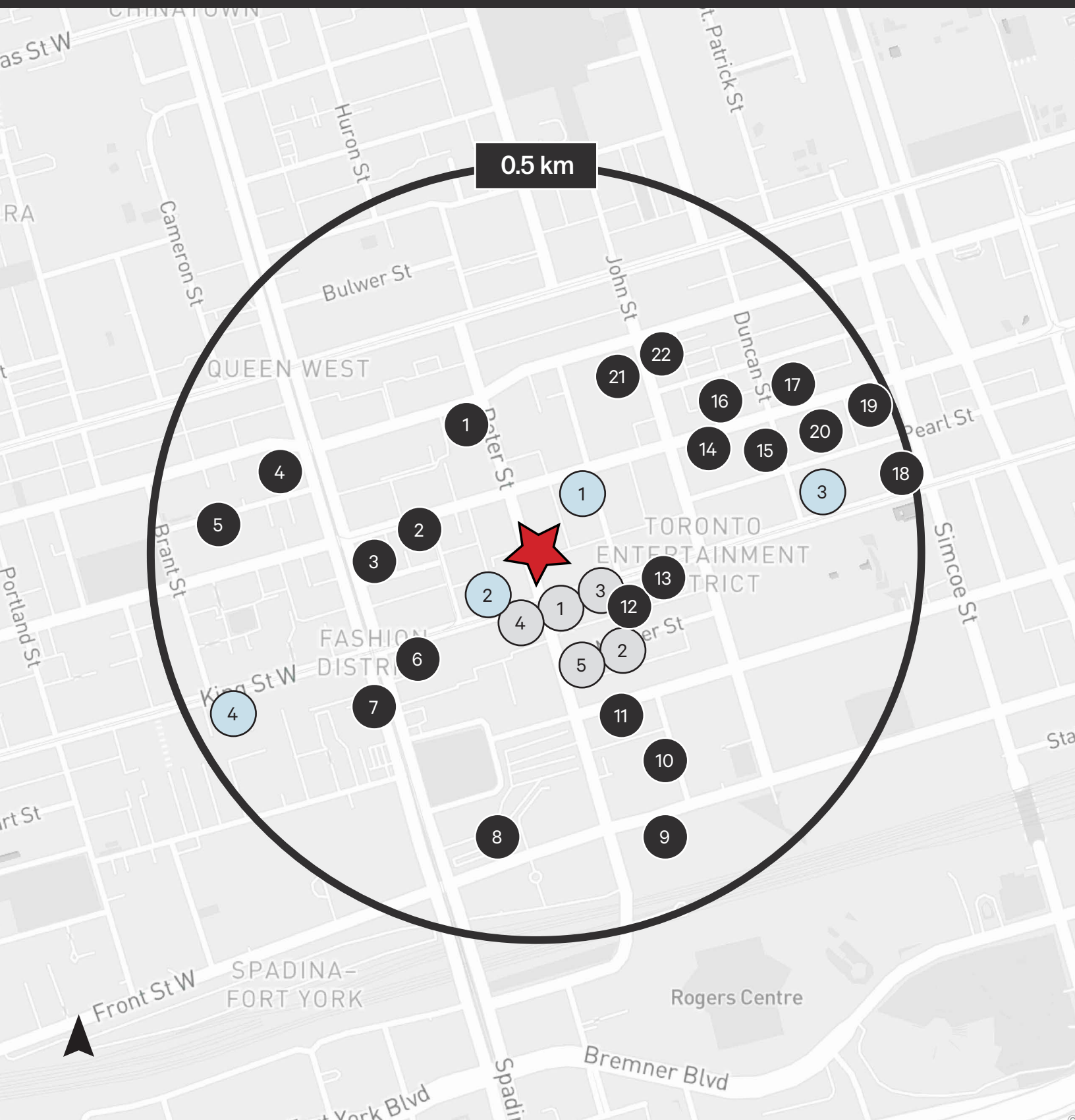
- 1 Shangri-La
- 2 Nobu Hotel
- 3 Revery Toronto
- 4 Hyatt Regency
- 5 Le Germain Hotel
- 6 Bisha Hotel
- 7 Soho Hotel
- 8 Residence Inn
- 9 The Ritz Carlton
- 10 Hilton
- 11 The Beverley Hotel
- 12 Sonder
- 13 Sutton Place Hotel

 **77 Peter Street**



NEIGHBOURING DEVELOPMENTS

INCOMING UNITS: 17,172 + (WITHIN 0.5KM)



Notable Active Developments

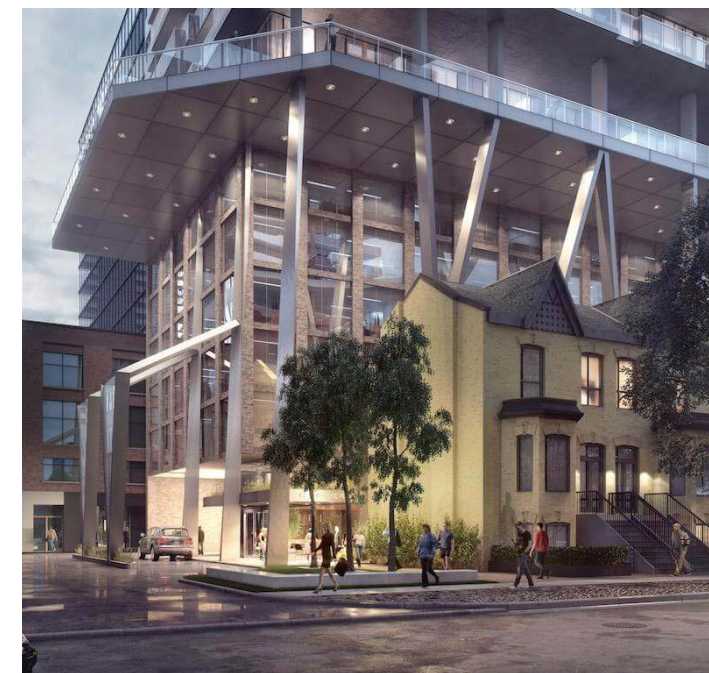
#	Condo	Units
1	Theatre District Condos	1,005
2	400 King West	612
3	Forma	2,034
4	KING Toronto	440
Total		4,091

Notable Development Applications

#	Condo	Units
1	122 Peter	386
2	Spadina Adelaide Square	557
3	101 Spadina Avenue	397
4	8 Camden	200
5	Camden House	237
6	Four Eleven King Condos	435
7	46 Spadina Avenue	550
8	400 Front Street	2,171
9	Union Park	732
10	310 Front West	1,782
11	255 Wellington St W	300
12	Bungalow on Mercer	12
13	305-319 King West	403
14	Natasha Residences	432
15	14 Duncan	369
16	260 Adelaide West	813
17	Freed Hotel & Residences	493
18	212 King Street West	569
19	100 Simcoe	526
20	150 Pearl	482
21	RioCan Hall	693
22	241 Richmond West	479
Total		13,081

Notable Recently Completed Condos

#	Condo	Units
1	King Blue	911
2	Nobu Residences	656
3	Maverick	310
4	357 King West	340
5	55 Mercer	543
Total		2,760





Contact

ARLIN MARKOWITZ*
Executive Vice President
416 815 2374
arlin.markowitz@cbre.com

ALEX EDMISON*
Senior Vice President
416 874 7266
alex.edmison@cbre.com

JACKSON TURNER**
Senior Vice President
416 815 2394
jackson.turner@cbre.com

TEDDY TAGGART*
Vice President
416 847 3254
teddy.taggart@cbre.com

EMILY EVERETT*
Sales Associate
647 943 4185
emily.everett@cbre.com

*Sales Representative **Broker

CBRE

This disclaimer shall apply to CBRE Limited, Real Estate Brokerage, and to all other divisions of the Corporation; to include all employees and independent contractors ("CBRE"). The information set out herein, including, without limitation, any projections, images, opinions, assumptions and estimates obtained from third parties (the "Information") has not been verified by CBRE, and CBRE does not represent, warrant or guarantee the accuracy, correctness and completeness of the Information. CBRE does not accept or assume any responsibility or liability, direct or consequential, for the Information or the recipient's reliance upon the Information. The recipient of the Information should take such steps as the recipient may deem necessary to verify the Information prior to placing any reliance upon the Information. The Information may change and any property described in the Information may be withdrawn from the market at any time without notice or obligation to the recipient from CBRE. CBRE and the CBRE logo are the service marks of CBRE Limited and/or its affiliated or related companies in other countries. All other marks displayed on this document are the property of their respective owners. All Rights Reserved.