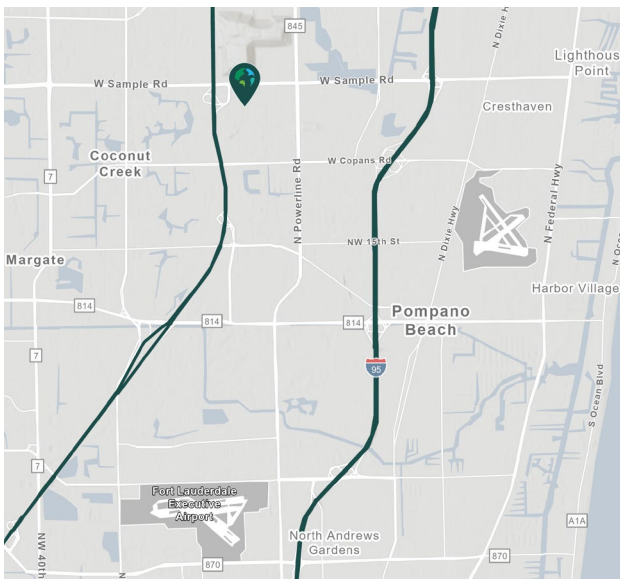


110,687 SF

2951 NW 27th Avenue
Pompano Beach, FL 33069

Prologis Pompano Park 6



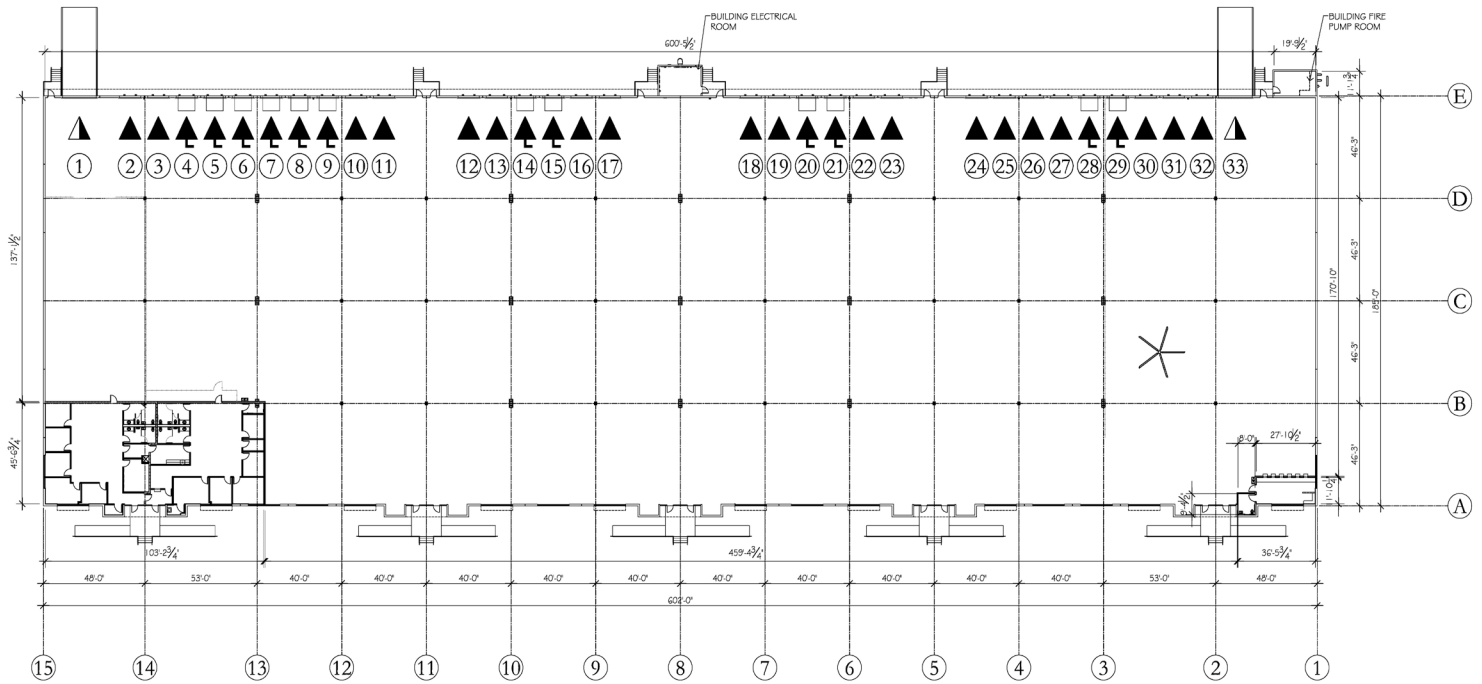
- Located on the west side of NW 27th Avenue (Blount Road), between Copans Road and Sample Road
- Strategically located between Interstate 95 and the Florida Turnpike
- Prologis Clear Lease[®] - Know your lease expenses and capital cost with greater certainty.

Property Features

Available Space	110,687 SF
Office SF	4,991 SF
Clear Height	32'
Column Spacing	46'3" x 40'
Dock Doors	31 (12 with pit levelers)
Drive-in Doors	2
Car Parking Spaces	177
Electrical Service	125 amps
Sprinkler	ESFR
Lighting	LED Motion Sensor
Available	August 2026



Unlock the full potential of your warehouse with one strategic, single-source partner.



Cushman & Wakefield
Chris Metzger

Chris.metzger@cushwake.com
ph +1 954 415 9155

Prologis
Ashley McMullen

amcmullen@prologis.com
ph +1 954 316 1778
prologis.com