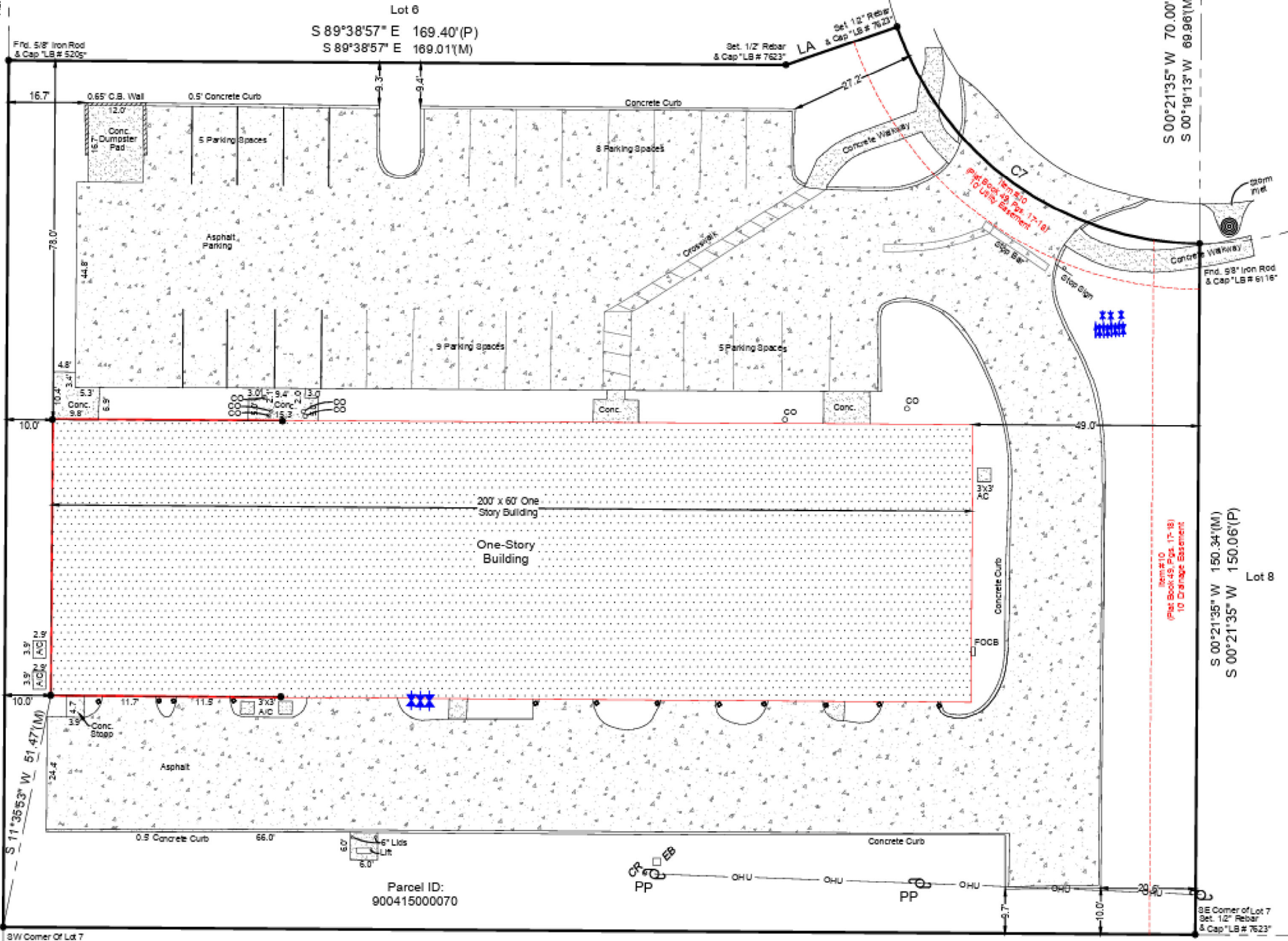


Plat of Konomoc  
Plat Book 1, Page 66  
N 00°21'35" E 188.50'(P)  
N 00°21'35" E 188.60'(M)

Plat Limits



Lot 6  
S 89°38'57" E 169.40'(P)  
S 89°38'57" E 169.01'(M)

S 00°21'35" W 70.00'(P)  
S 00°19'13" W 69.96'(M)

S 00°21'35" W 150.34'(M)  
S 00°21'35" W 150.06'(P)

Lot 8

Parcel ID:  
900415000070

N 89°38'49" W 259.11'(M)

SW Corner of Lot 7  
Fnd. 5/8" Iron Rod  
& Cap "LB # 5205"

SE Corner of Lot 7  
Set. 1/2" Rebar  
& Cap "LB # 7623"

Item #10  
Plat Book 13, pg. 17-18  
10 Change Easement

Item #10  
Plat Book 13, pg. 17-18  
10 Change Easement