



PRIME LOCATION
ECHO PARK

1724 Sunset Blvd



Prime Corner Available For Lease | Restaurant + Retail



OVERVIEW

Prime corner available for lease with immense presence and visibility, delivering Q1 2026. Suitable for both retail and restaurant uses, the space offers multiple demising plans for maximum flexibility and multiple configurations with a CUB in process with ownership. Large basement for additional storage, and an existing mezzanine perfect for an ancillary office. Located in a highly walkable area with built-in foot traffic.



STEREOSCOPE
COFFEE CO.

The
SHORT
STOP



BAR BANDINI



Churreria
EL MORO
DESDE 1935





HIGHLIGHTS

Space 1 960.1 sf

Space 2 1,078.2 sf

Combined 2,038.3 sf contiguous – delivered restaurant-ready

Space 3 1,627.4 sf – delivered with a Type 48 CUB

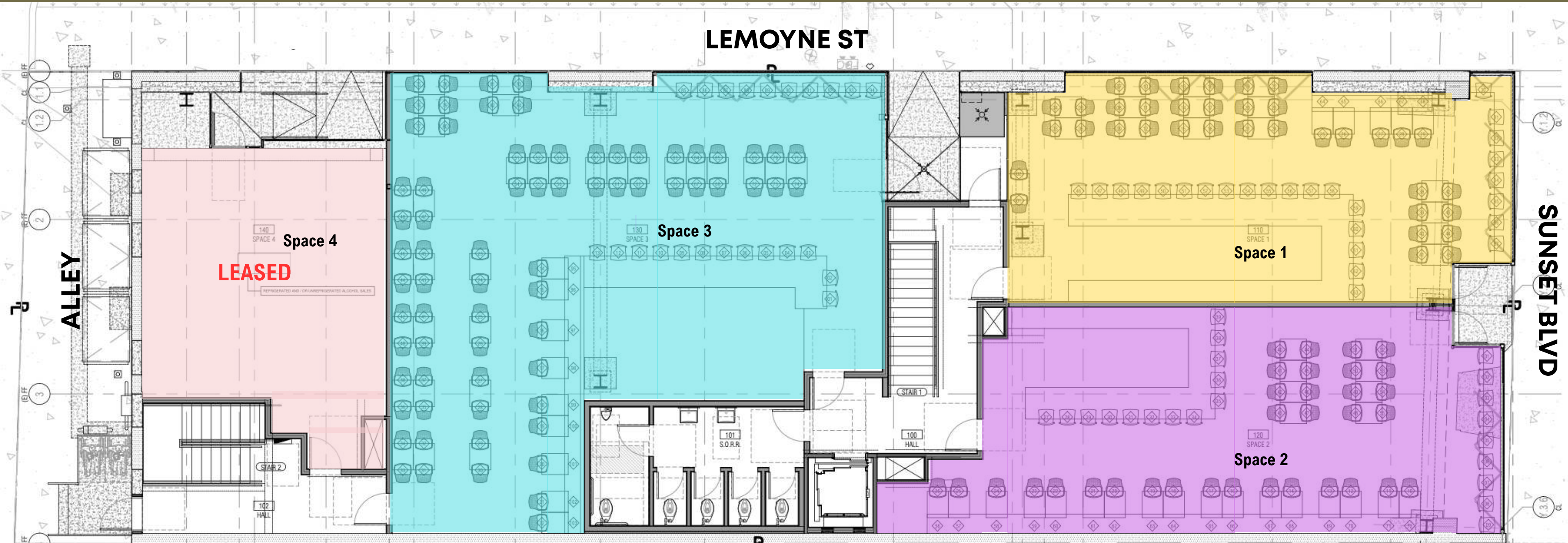
Space 4 639.9 sf – delivered with a Type 21 CUB

**Entire basement is available for additional storage for each unit.*



FLOOR PLAN

Space 1 960.1 sf
Space 2 1,078.2 sf
Space 3 1,627.4 sf
Space 4 639.9 sf



LOCATION AMENITIES

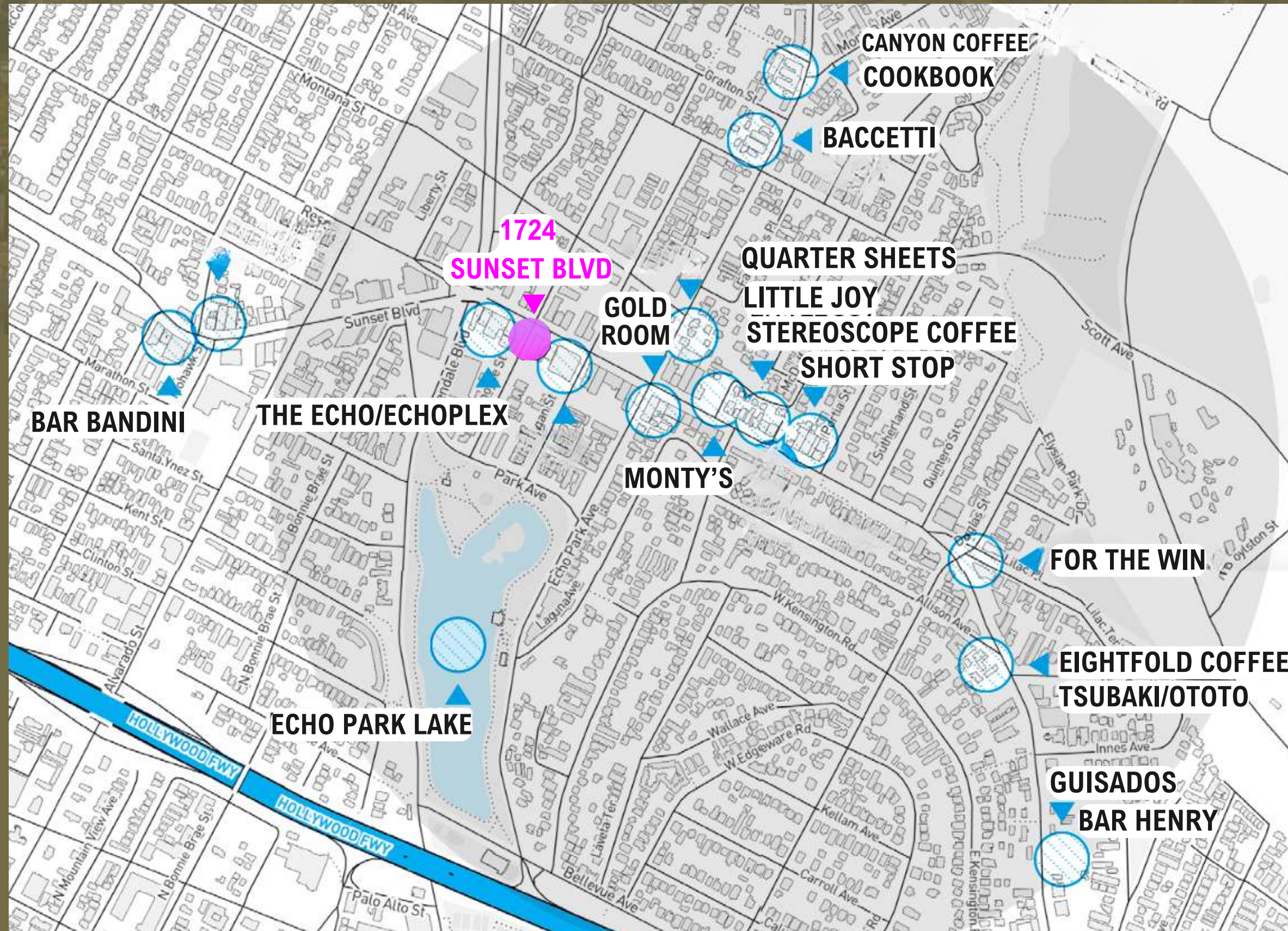
1724 W Sunset Blvd Los Angeles, CA 90026

Food & Beverage

1. Canyon Coffee
2. Cookbook
3. Baccetti
4. Quarter Sheets
5. Little Joy
6. Stereoscope Coffee
7. Short Stop
8. Gold Room
9. Monty's
10. Bar Bandini
11. For The Win
12. The Echo/Echoplex
13. Eightfold Coffee
14. Tsubaki OTOTO
15. Guisados
16. Bar Henry
17. Eastside Deli
18. Perilla LA
19. Levata Coffee
20. Butchr Bar
21. Grá
22. Clark Street Bread

Fitness & Retail

1. Club Pilates
2. CrossFit Echo Park
3. PHAROS Athletic Club
4. One Down Yoga
5. The Strength Shop
6. Eastside Market
7. Sunday's Best Vintage
8. Lemon Frog Vintage





Contact



LORENA TOMB

213.277.7247 x 1

Lorena@urbanlimere.com

BRE# 01894475

ARAM POGOSIAN

818.631.2442

ap@industrypartners.com

BRE# 01816276

MAGUIRE PARSONS

mp@industrypartners.com

BRE# 02047123

